

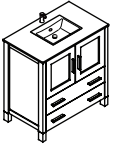


# **FVN6230-UNS** **TORINO**

## **INSTALLATION GUIDE**

### CONTENTS:

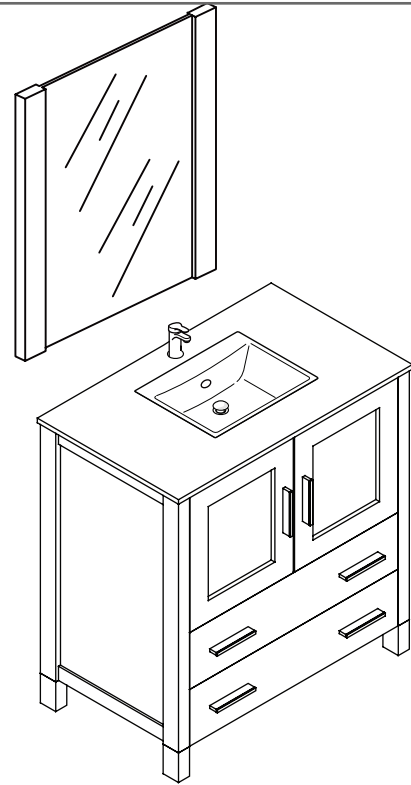
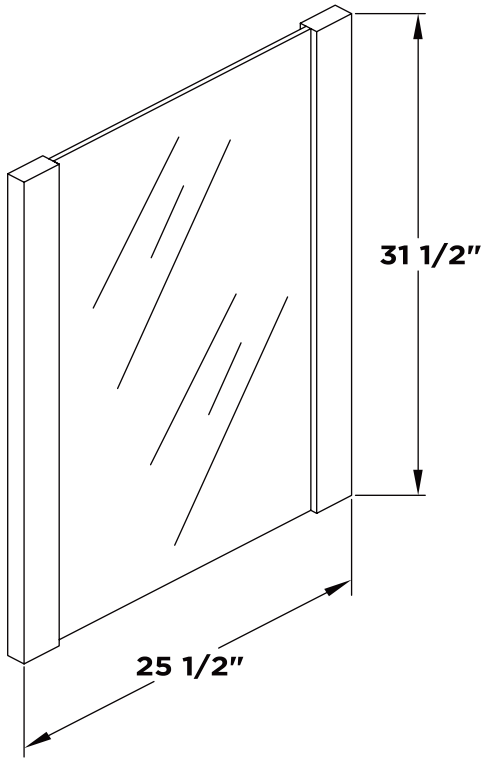
Cabinet .....	(FCB6230) .....	PAGE <b>3</b>
Sink .....	(FVS6230) .....	PAGE <b>4</b>
Mirror .....	(FMR6230) .....	PAGE <b>2</b>



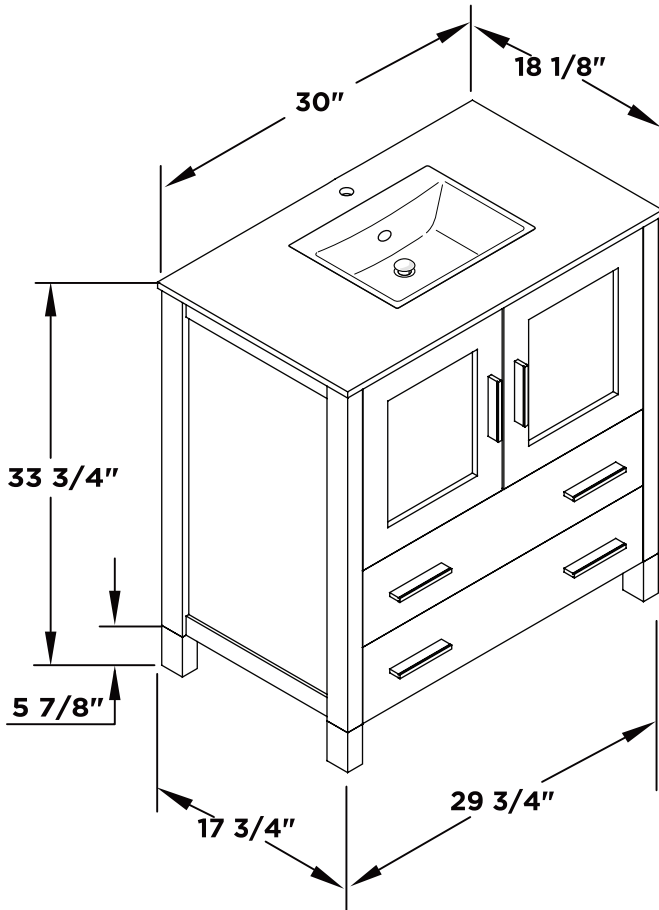
# FVN6230-UNS TORINO INSTALLATION GUIDE



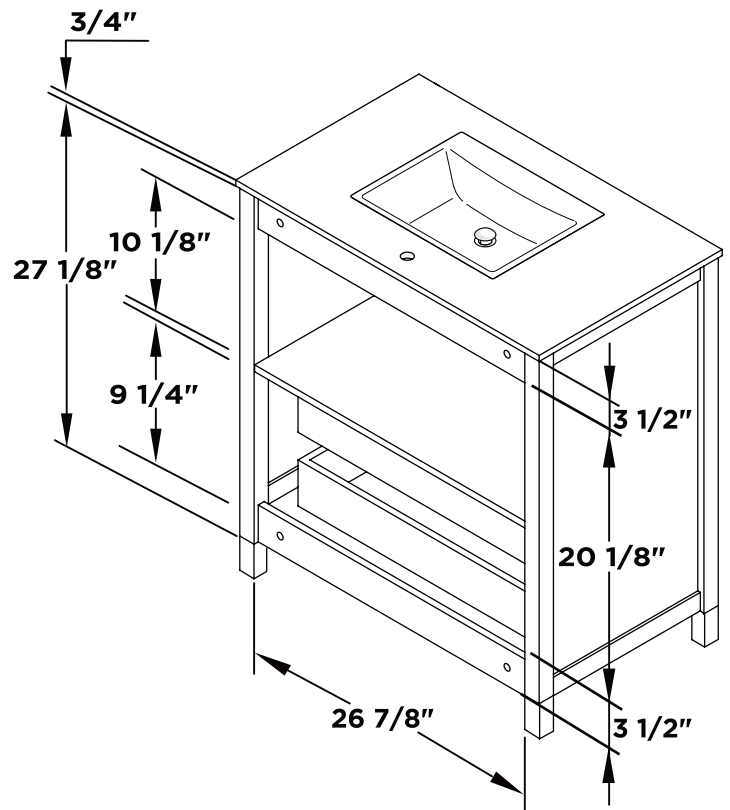
Mirror



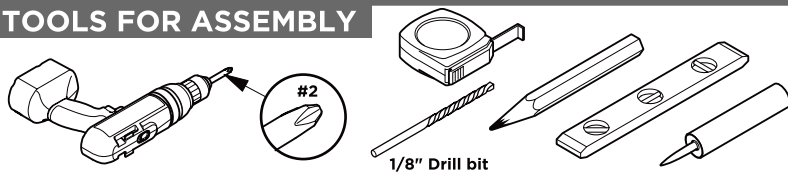
Vanity Front



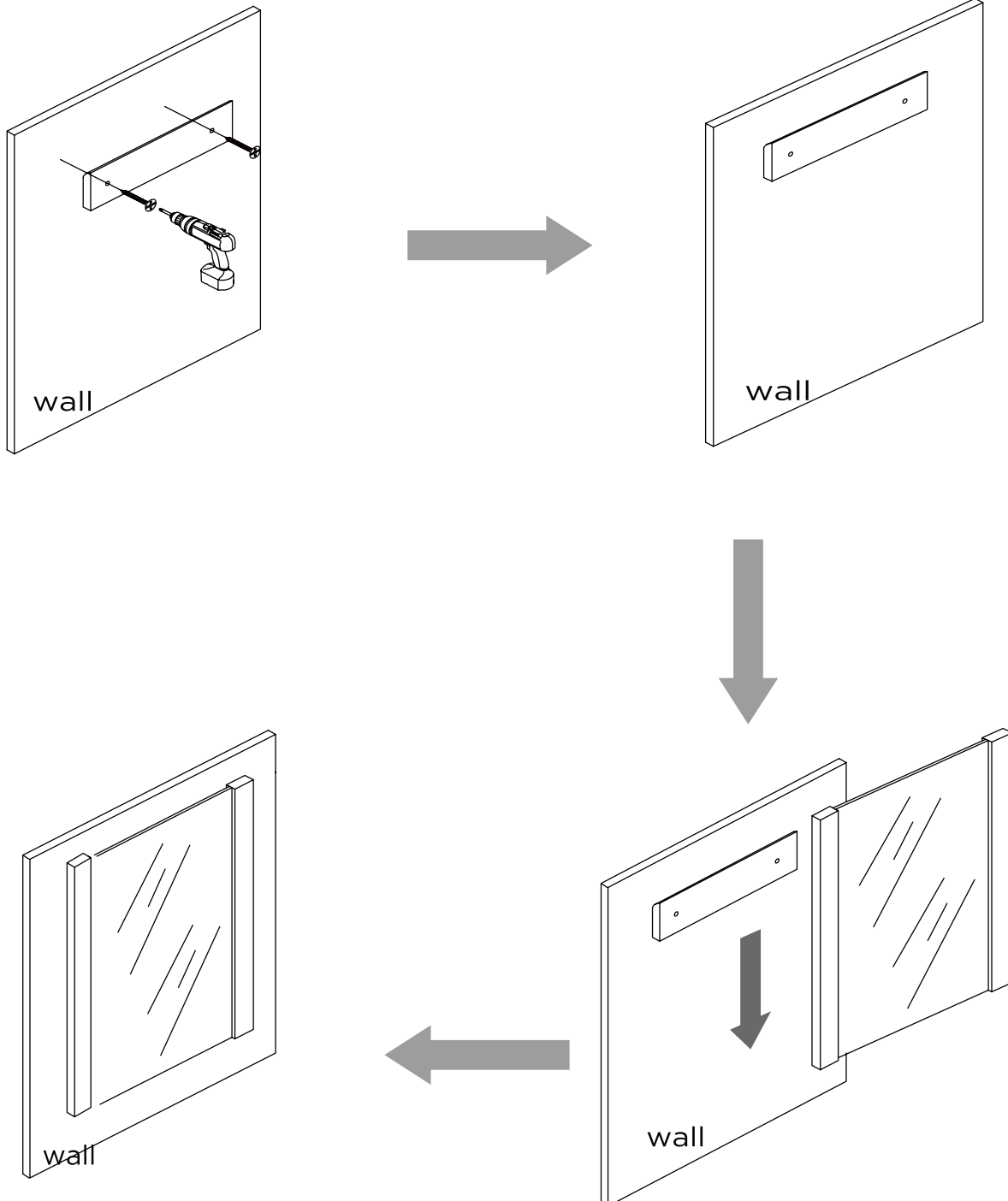
Vanity Back



## TOOLS FOR ASSEMBLY

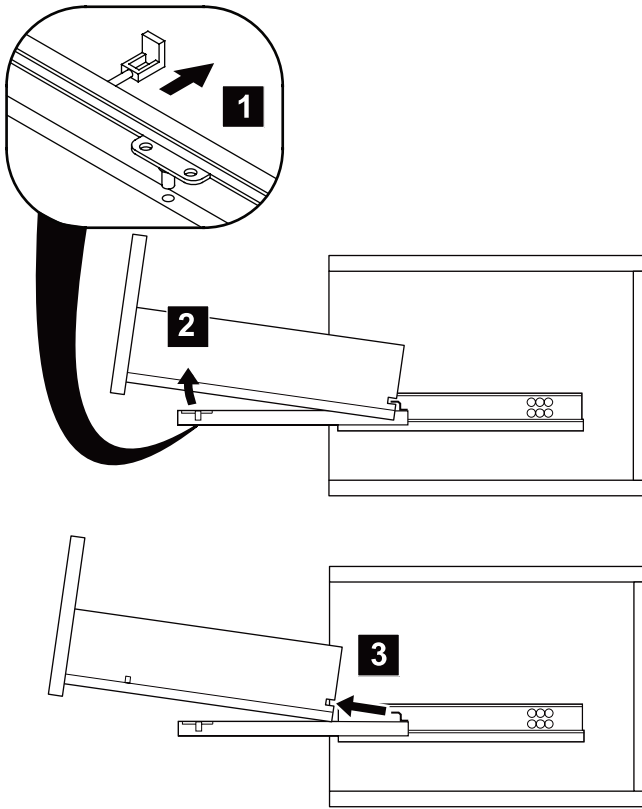


## MIRROR INSTALLATION

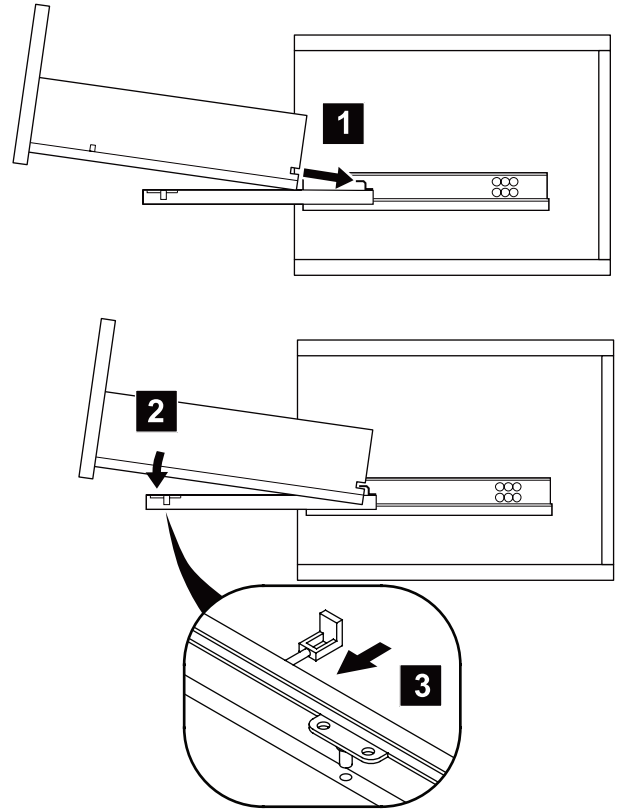


## DRAWER REMOVAL & INSTALLATION

### REMOVAL

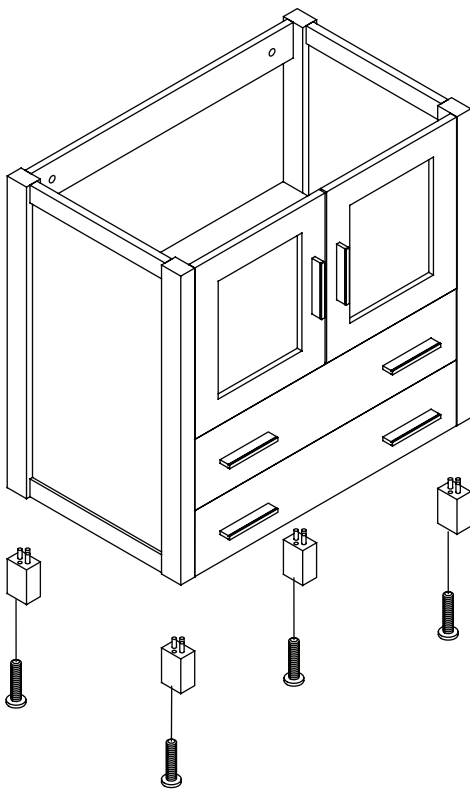


### INSTALLATION



1

Install leg



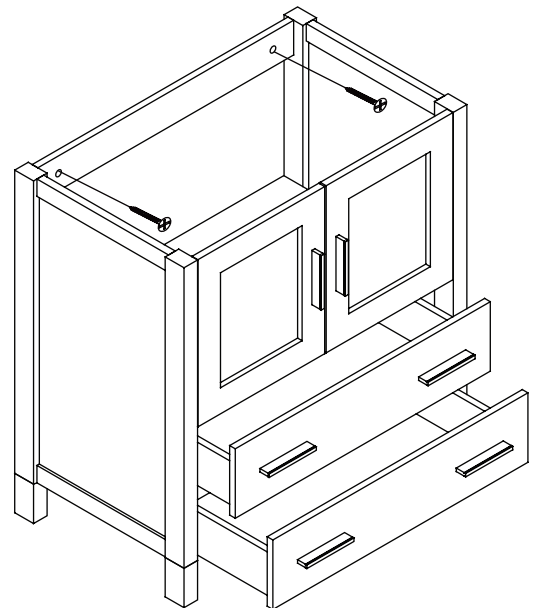
2

Remove drawer

3

Install cabinet

**IMPORTANT:** Consult an expert for the proper screws/bolts to use when attaching to various wall constructions. Screws provided do not attach to all wall construction types.



**FVN6230-UNS**

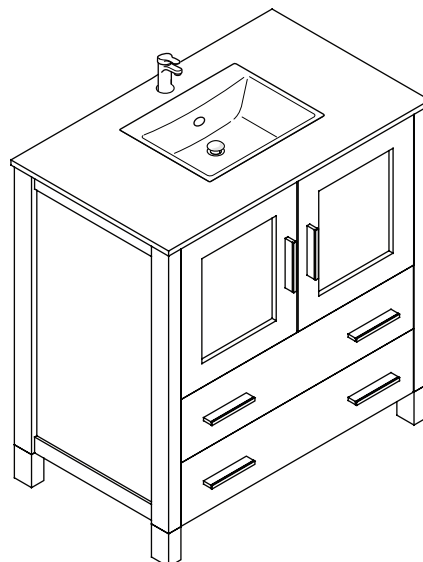
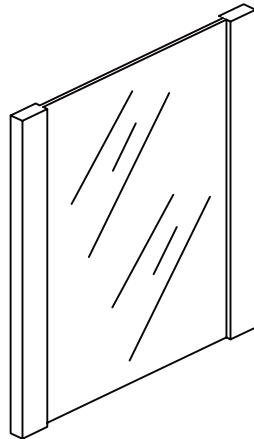
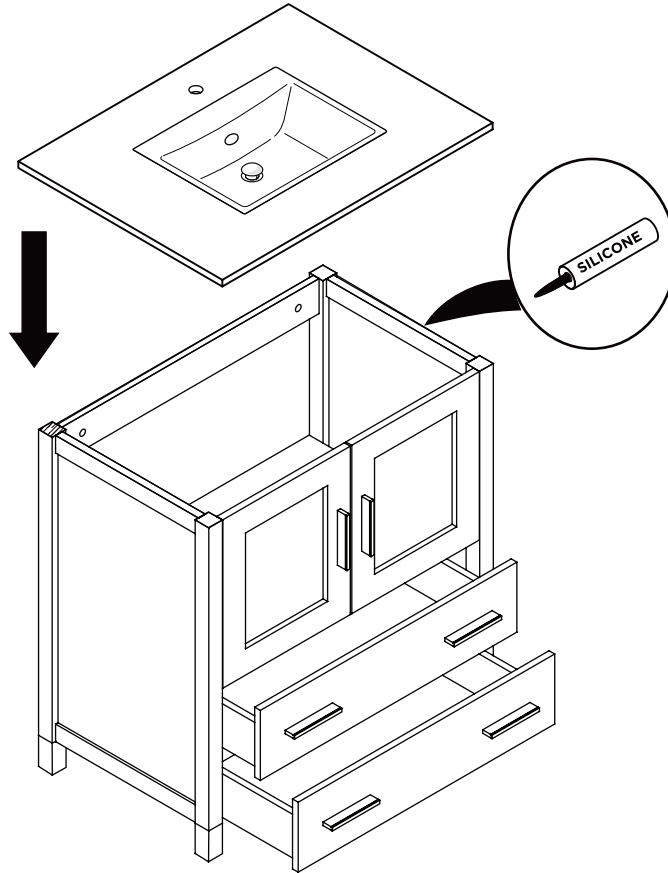
**TORINO**

**INSTALLATION GUIDE**

PAGE 3

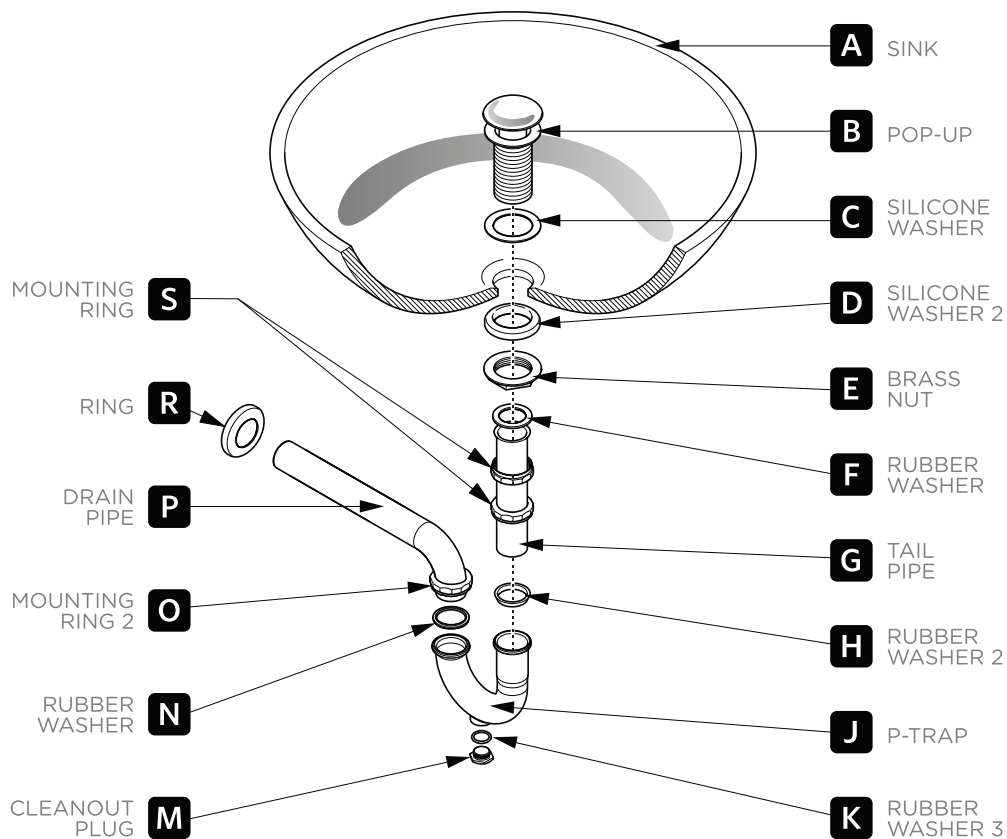
4

Install top panel



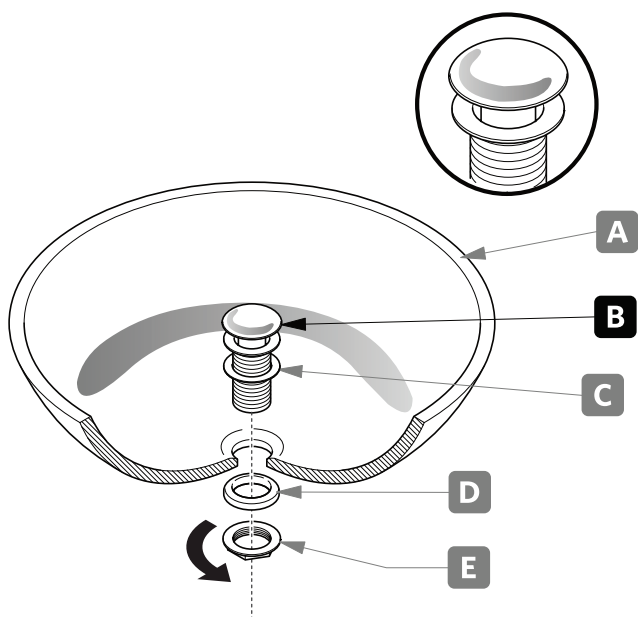
# P-TRAP & POP-UP INSTALLATION INSTRUCTIONS

Your item may appear slightly different from the illustration.



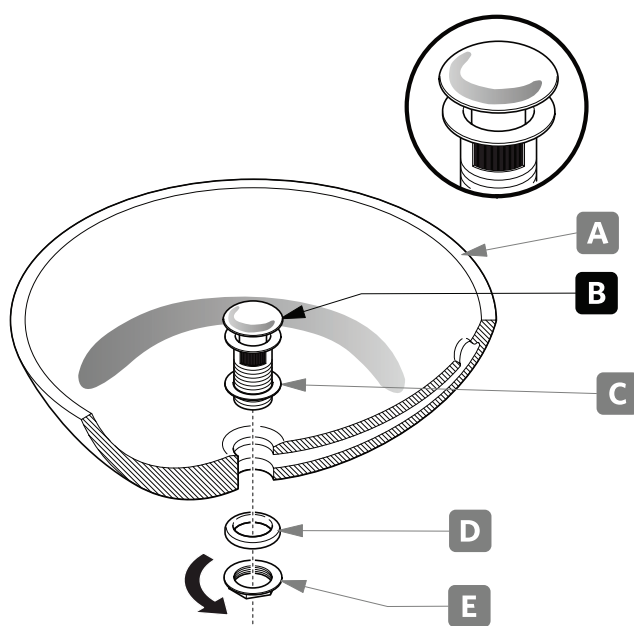
## POP-UP INSTALLATION

### FOR SINKS WITHOUT OVERFLOW



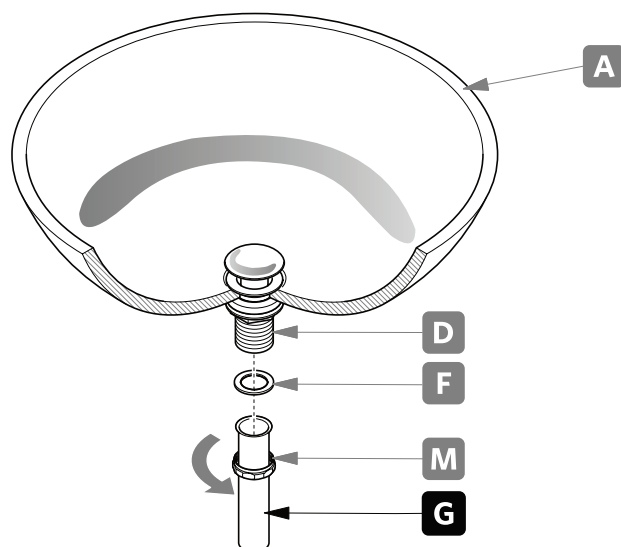
OR

### FOR SINKS WITH OVERFLOW



## P-TRAP INSTALLATION

1. Install tail pipe **(G)**.



2. Install P-trap **(J)**.

