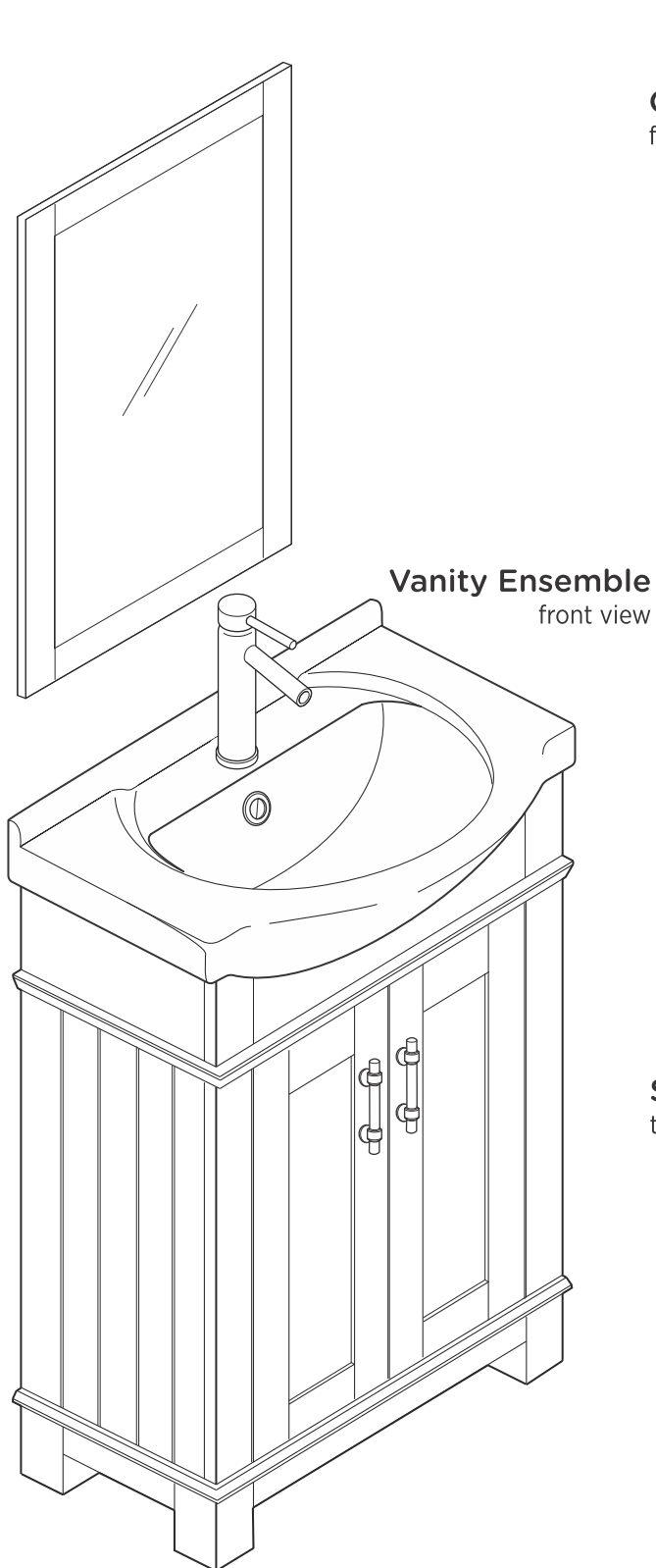




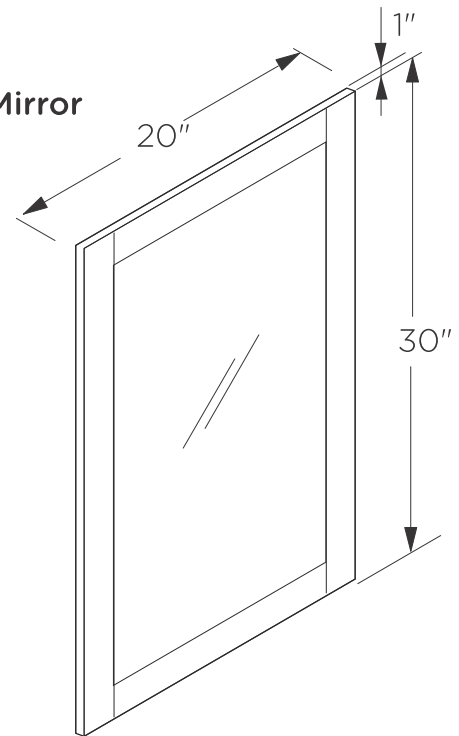
# FCB2303-I HARTFORD INSTALLATION GUIDE



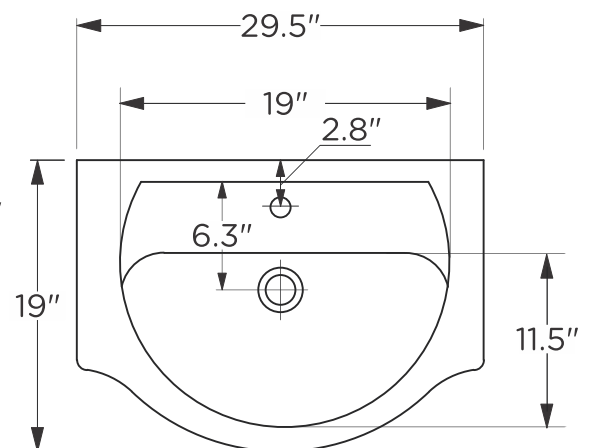
FRESCA®



**Optional Mirror**  
front view



**Sink**  
top view



ALL DIMENSIONS & SPECIFICATIONS ARE APPROXIMATE AND SUBJECT TO CHANGE WITHOUT NOTICE.

**kitchensource.com**  
1.800.667.8721



**FCB2303-I | HARTFORD | INSTALLATION GUIDE**

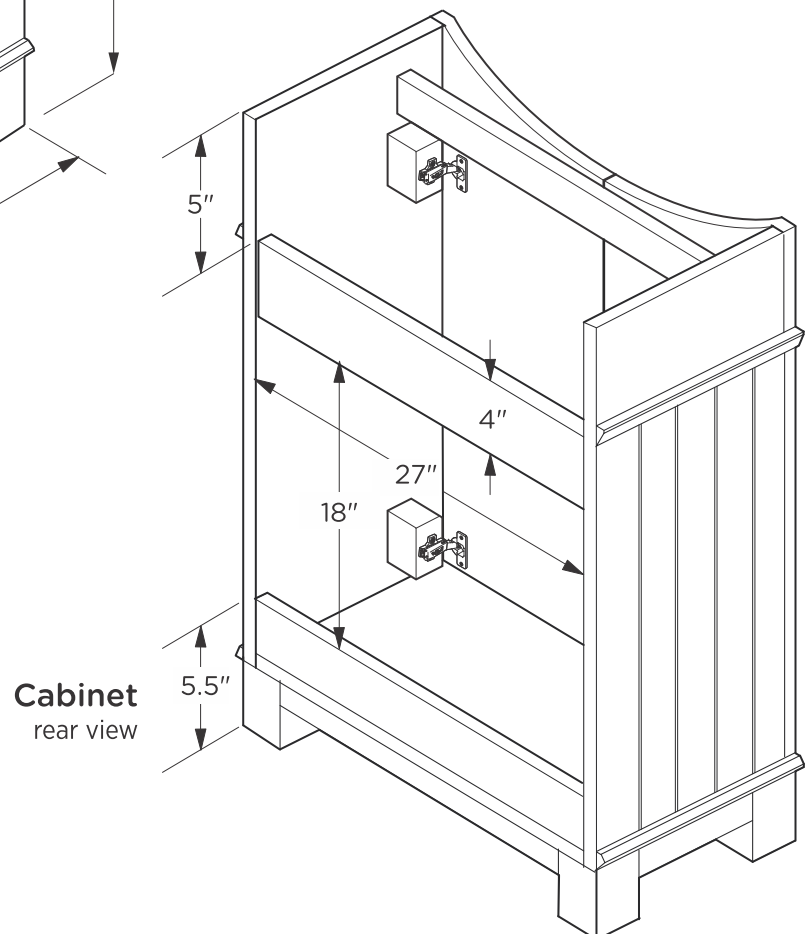
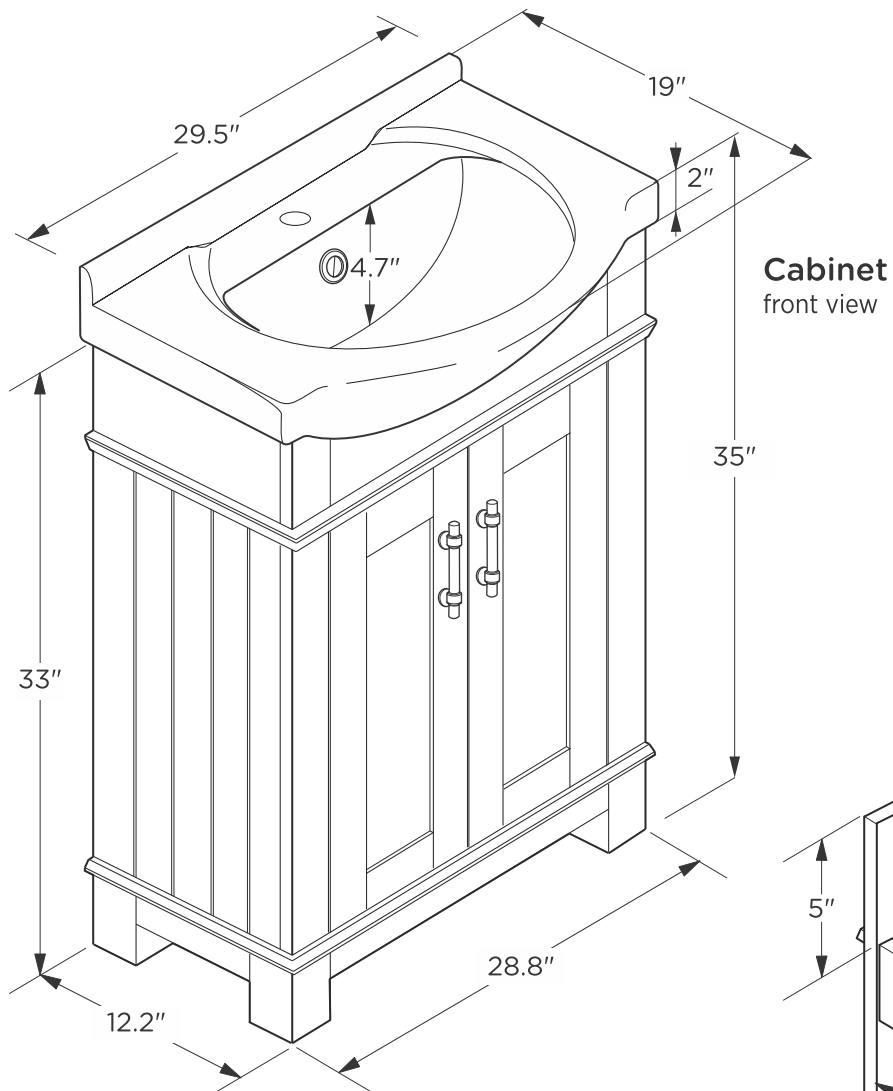
PAGE 1



# FCB2303-I HARTFORD INSTALLATION GUIDE



FRESCA®

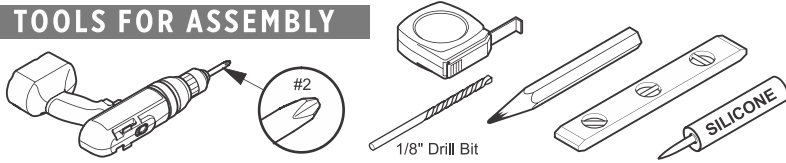


ALL DIMENSIONS & SPECIFICATIONS ARE APPROXIMATE AND SUBJECT TO CHANGE WITHOUT NOTICE.

**kitchensource.com**  
1.800.667.8721

# MIRROR INSTALLATION

## TOOLS FOR ASSEMBLY

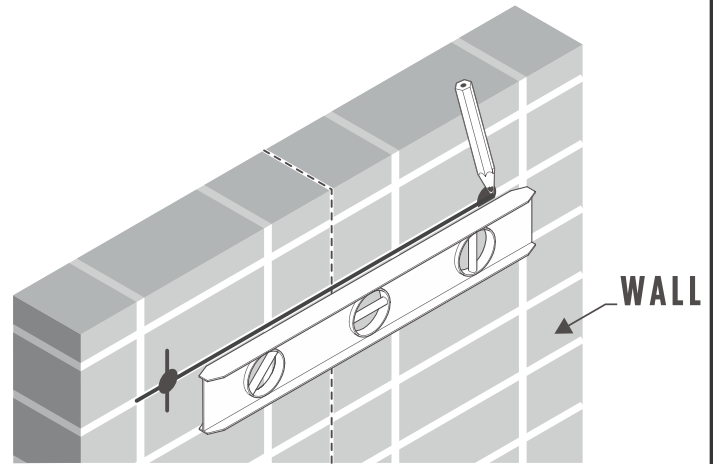
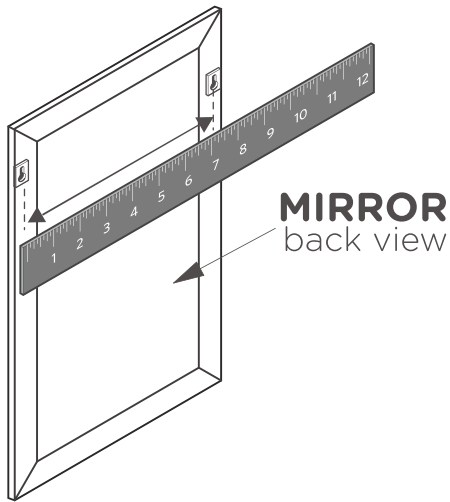


2

Mark the measured distance on the wall using a level

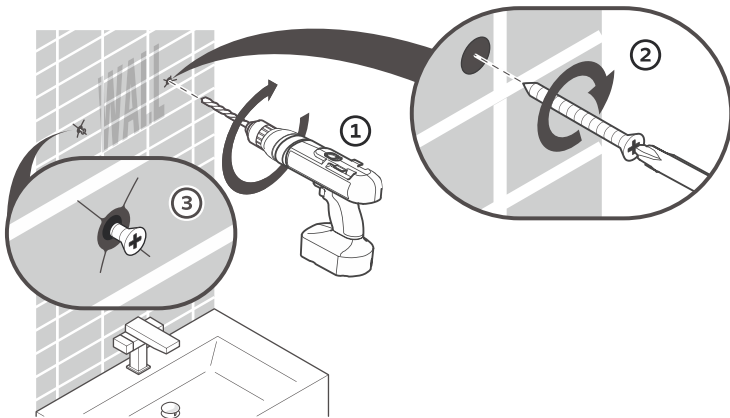
1

Measure the distance between the brackets on the back of the mirror



3

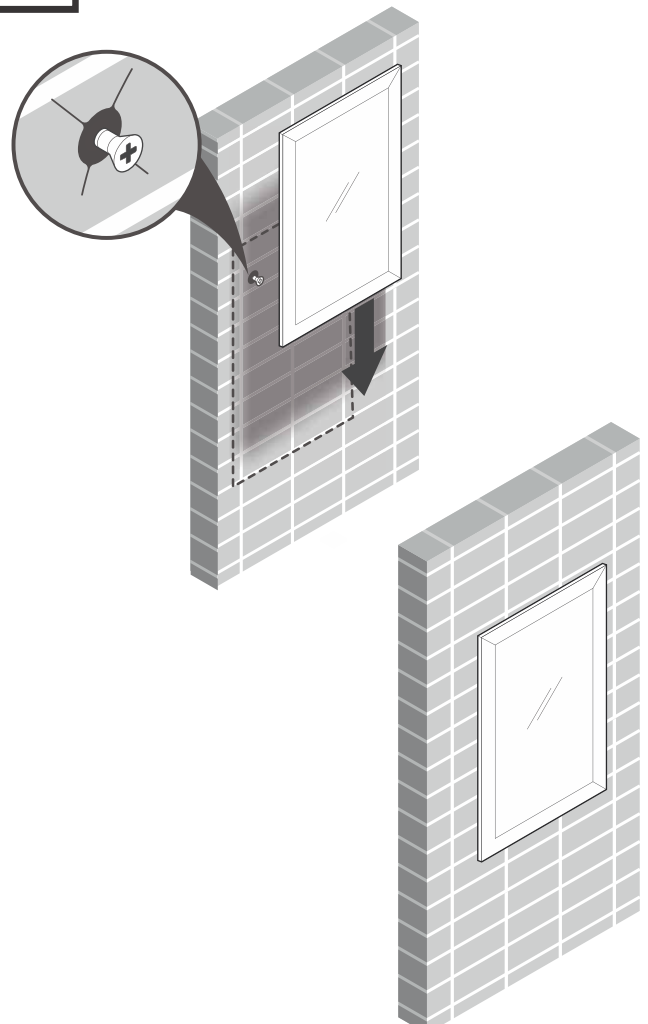
Once position is marked, drill 2 holes and insert anchors if stud is not available



**IMPORTANT:** Consult an expert for the proper screws/bolts to use when attaching to various constructions. Screws provided do not attach to all wall construction types. Anchors are not required if brackets are installed in stud.

4

Hang mirror on the wall



**kitchensource.com**  
1.800.667.8721



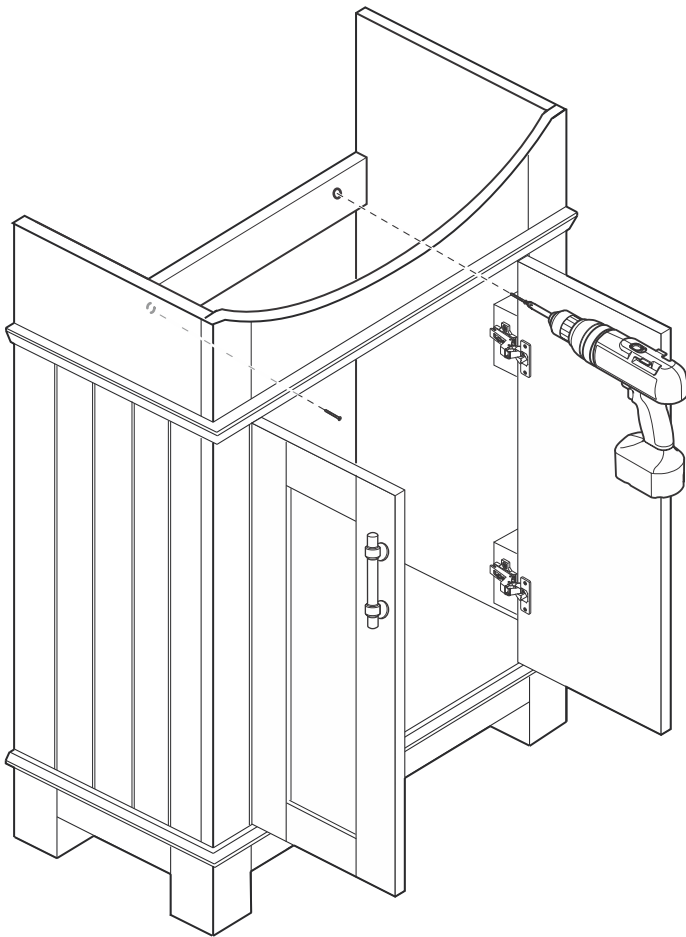
**FCB2303-I | HARTFORD | INSTALLATION GUIDE**

PAGE 3

# CABINET INSTALLATION

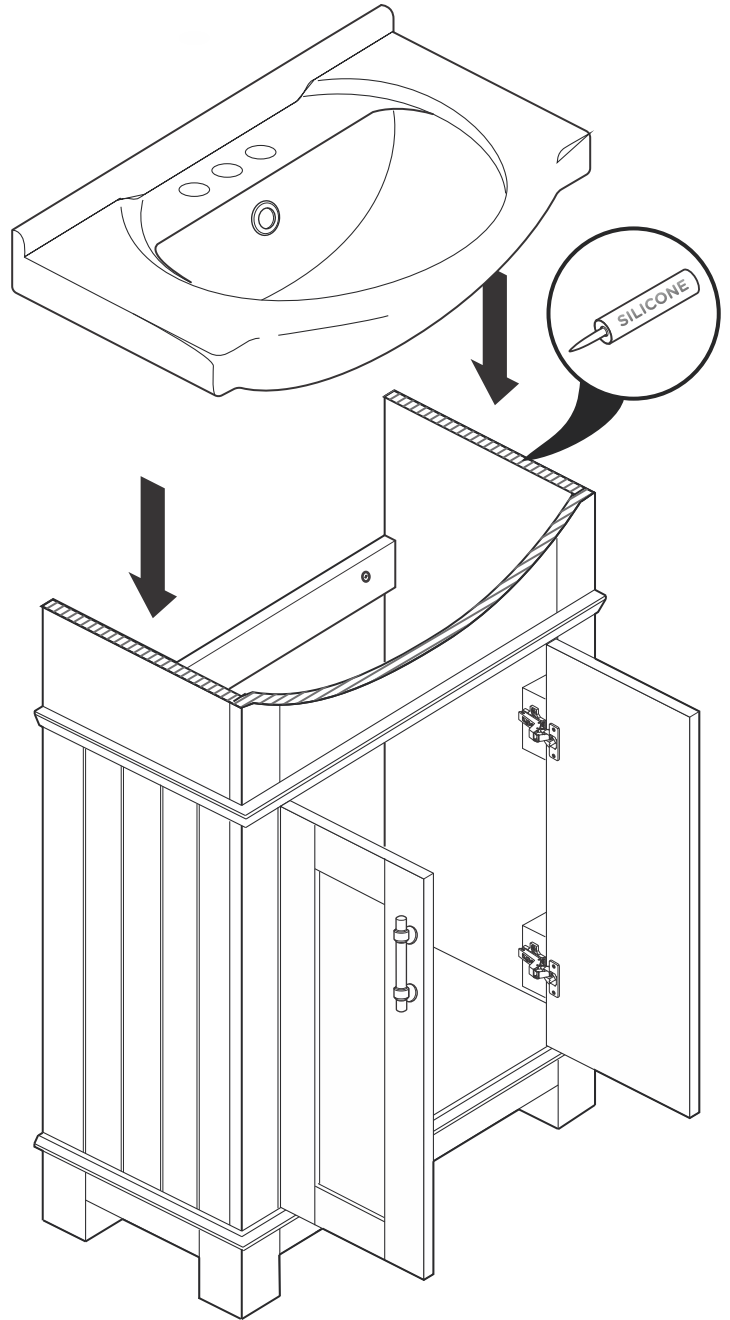
1

Attach the cabinet to the wall.



2

Apply a bead of silicone on the top of the cabinet and place the sink on it.



**IMPORTANT:** Consult an expert for the proper screws/bolts to use when attaching to various constructions. Screws provided do not attach to all wall construction types. Anchors are not required if brackets are installed in stud.

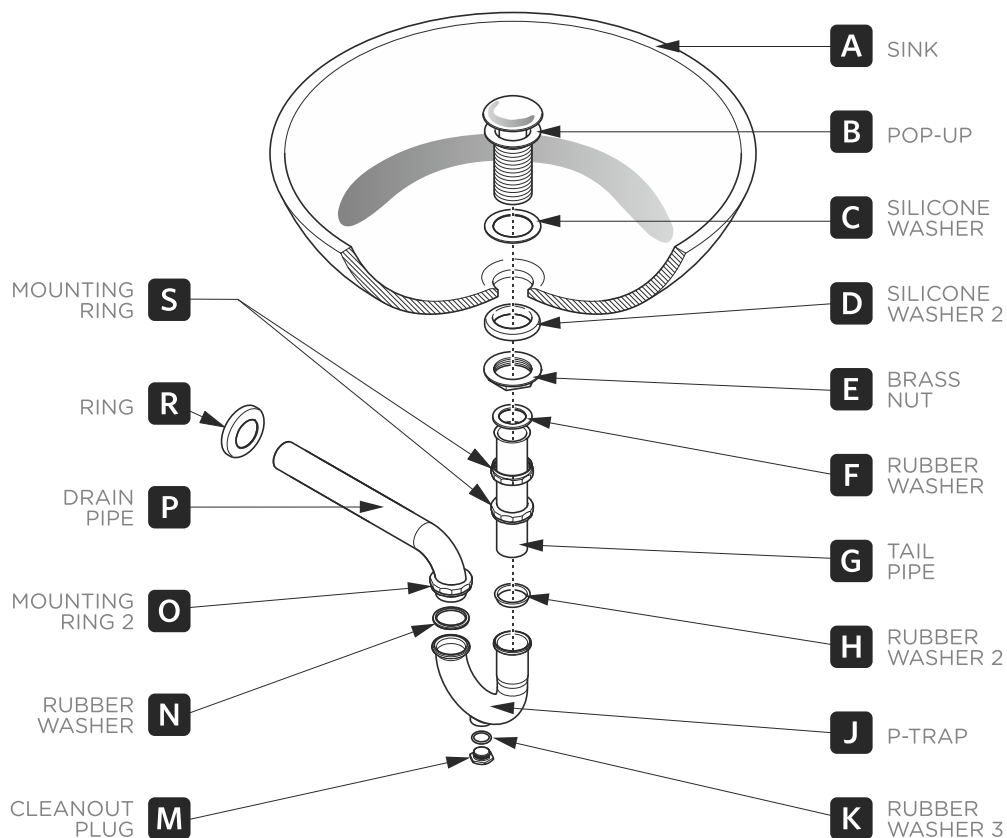
 **kitchensource.com**  
1.800.667.8721

 **FCB2303-I | HARTFORD | INSTALLATION GUIDE**

PAGE 4

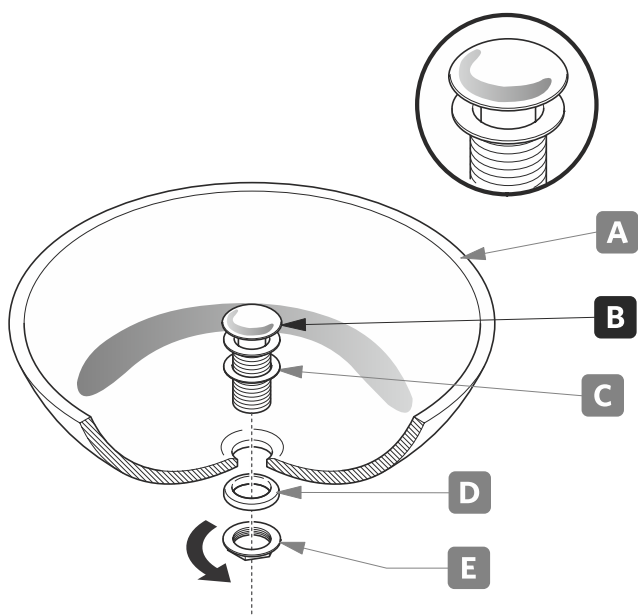
# P-TRAP & POP-UP INSTALLATION INSTRUCTIONS

Your item may appear slightly different from the illustration.



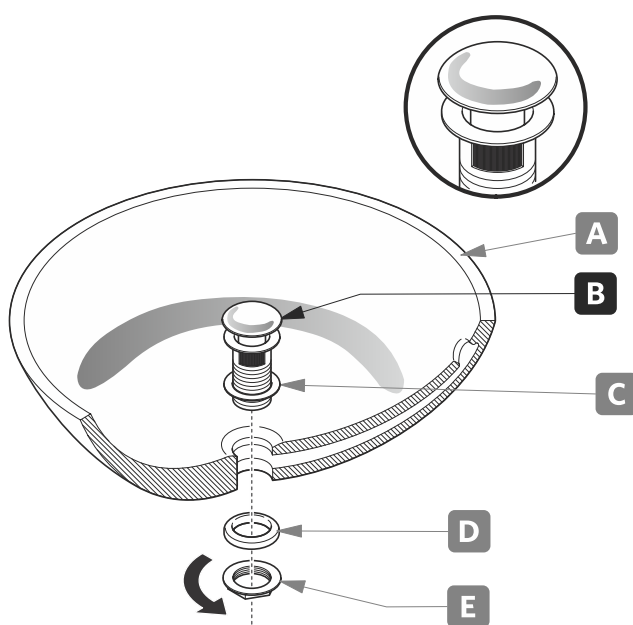
## POP-UP INSTALLATION

**FOR SINKS  
WITHOUT OVERFLOW**



OR

**FOR SINKS  
WITH OVERFLOW**



**kitchensource.com**  
1.800.667.8721

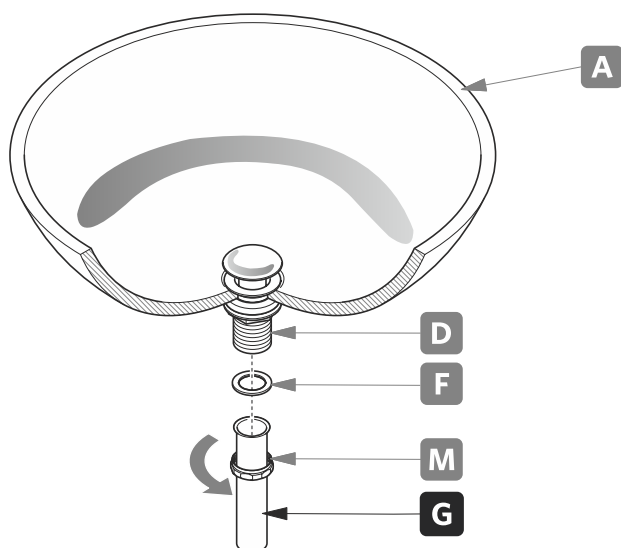


**FCB2303-I | HARTFORD | INSTALLATION GUIDE**

PAGE 5

# P-TRAP INSTALLATION

- 1** Install tail pipe **(G)**.



- 2** Install P-trap **(J)**.

