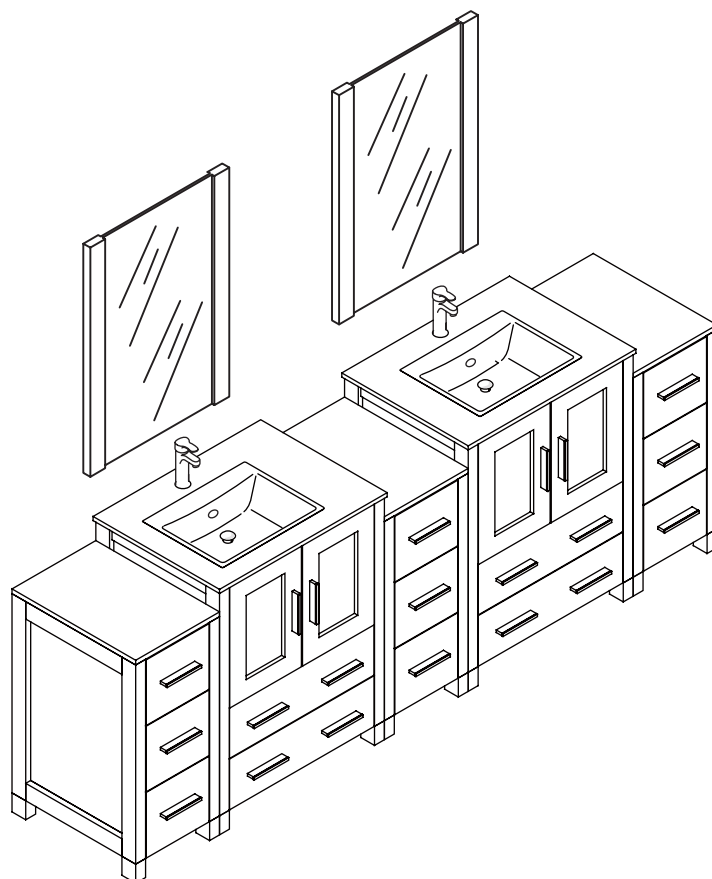
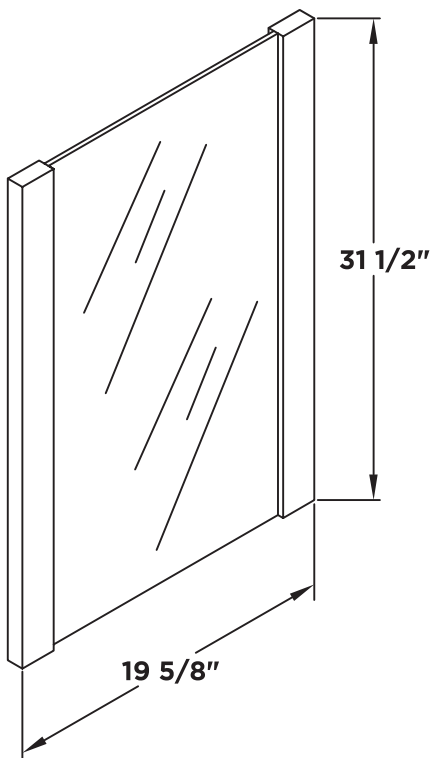
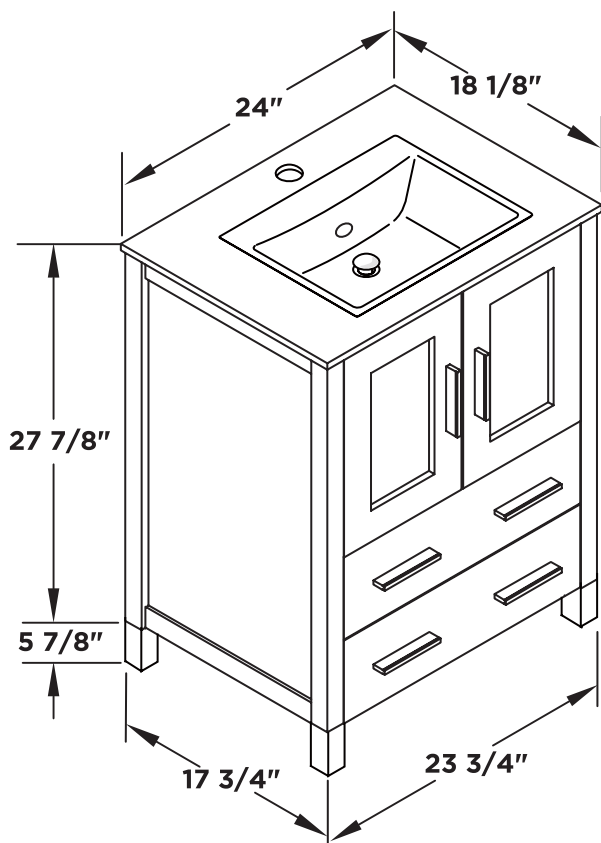


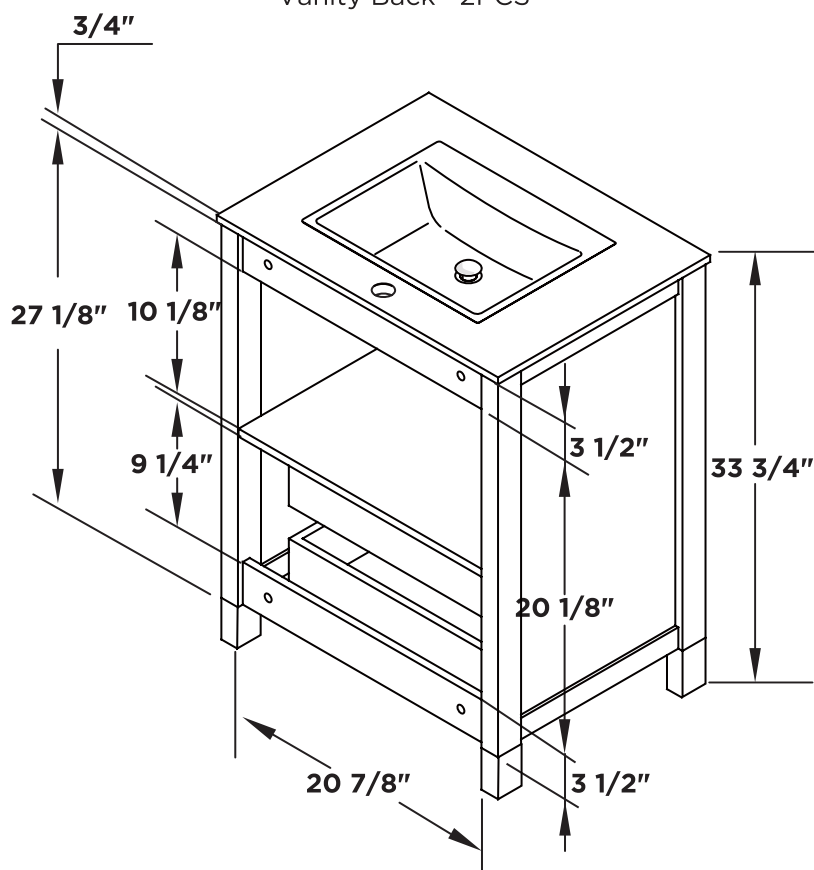
Mirror 2PCS



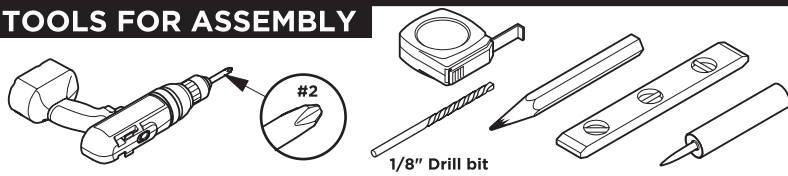
Vanity Front 2PCS



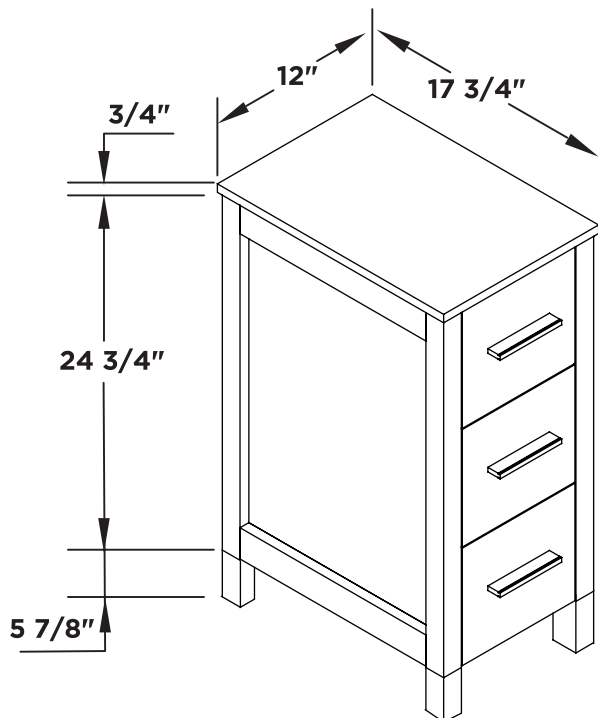
Vanity Back 2PCS



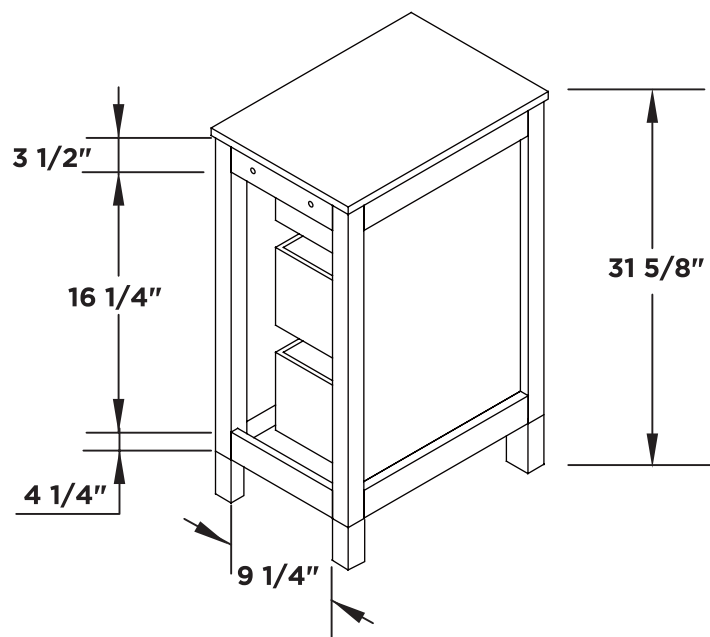
## TOOLS FOR ASSEMBLY



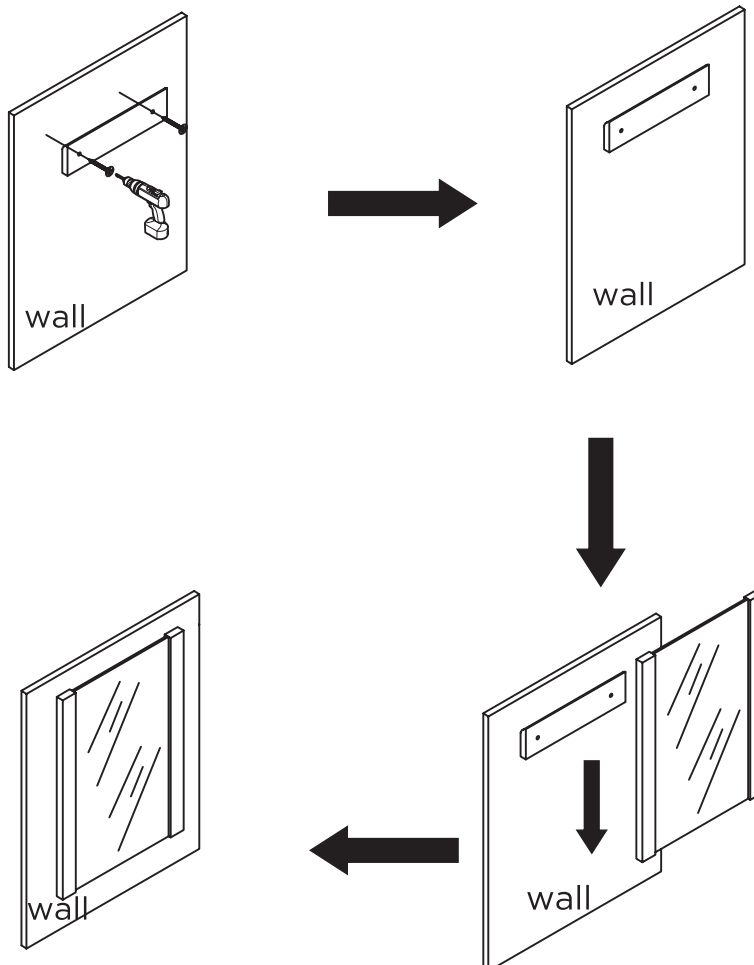
Side Cabinet Front 3PCS



Side Cabinet Back 3PCS

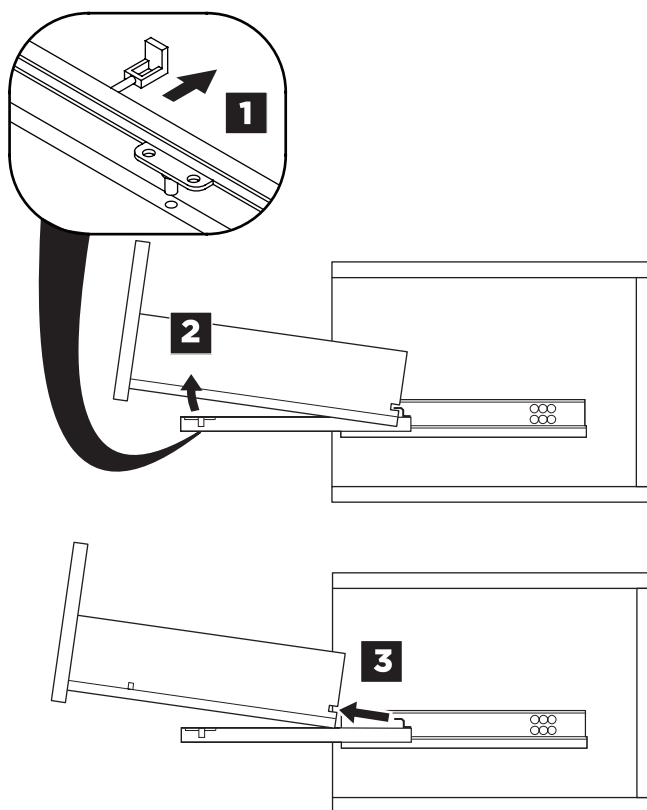


## MIRROR INSTALLATION

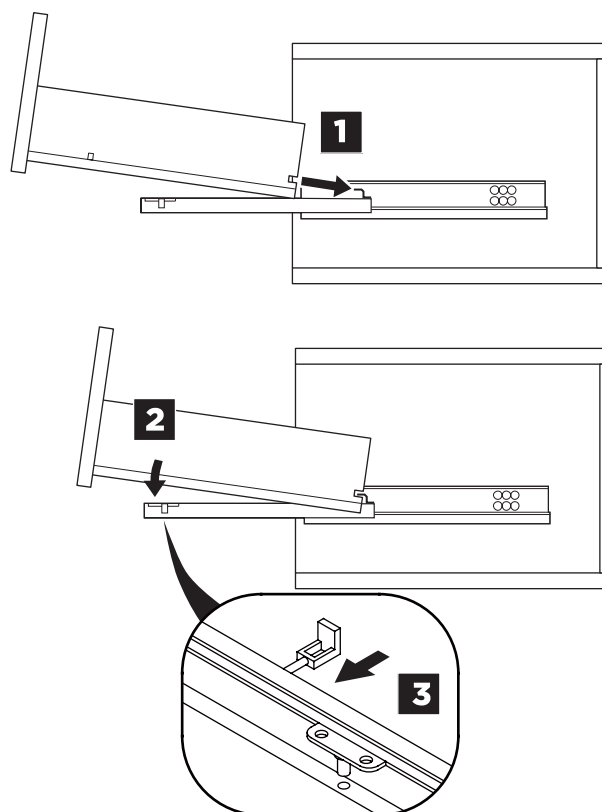


## DRAWER REMOVAL & INSTALLATION

### REMOVAL

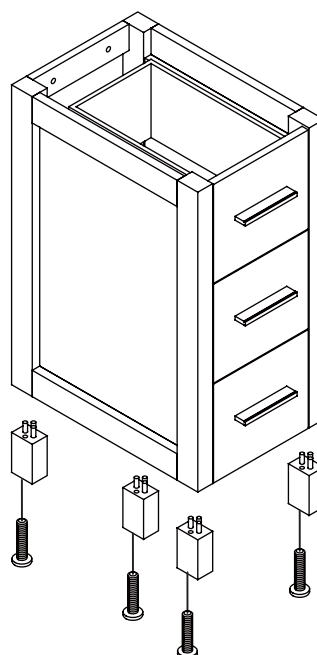
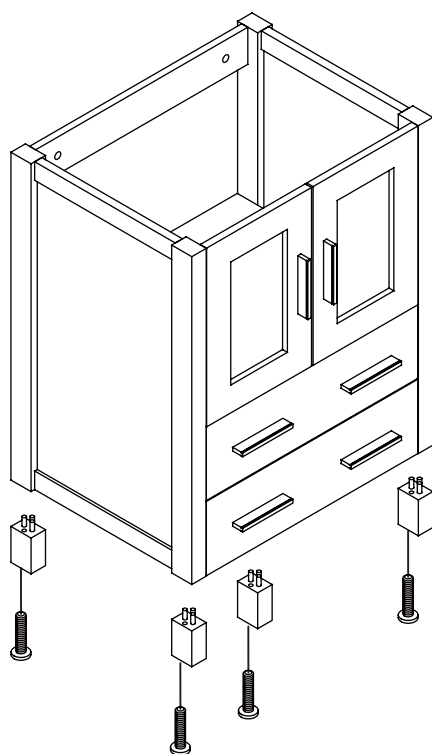


### INSTALLATION



**1**

Install leg



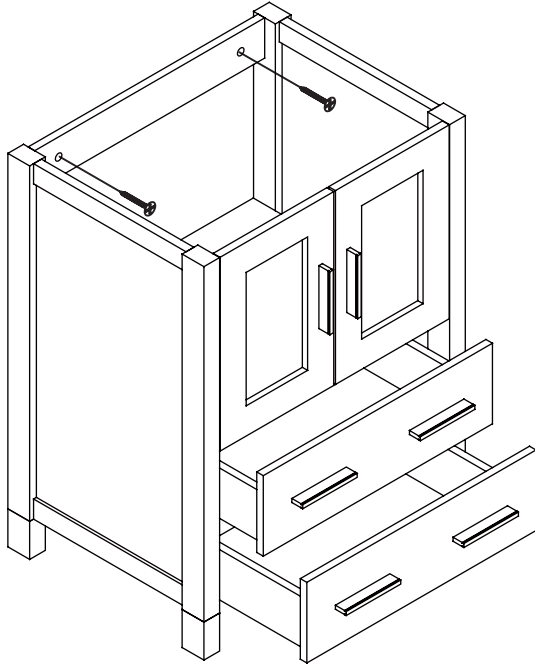
2

Remove drawer

3

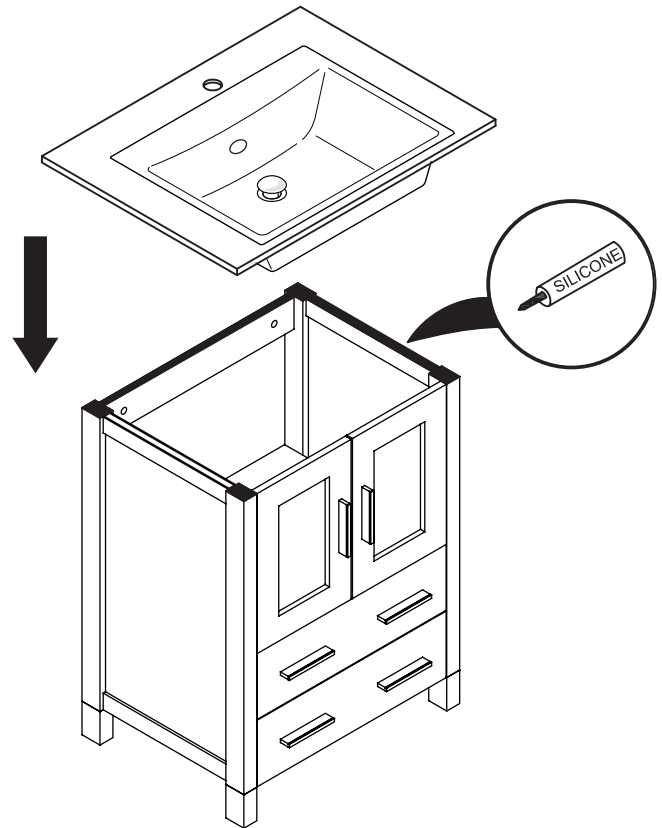
Install cabinet

**IMPORTANT:** Consult an expert for the proper screws/bolts to use when attaching to various wall constructions. Screws provided do not attach to all wall construction types.



4

Install top panel

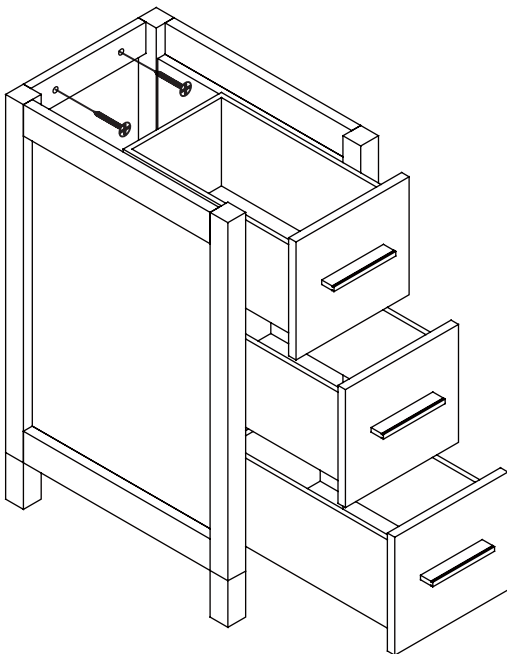


5

Remove side cabinet drawer

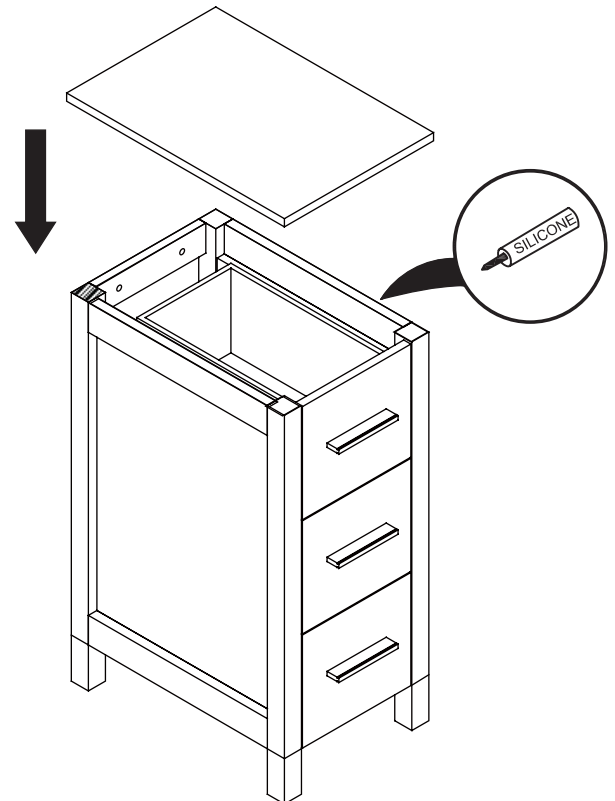
6

Install side cabinet



7

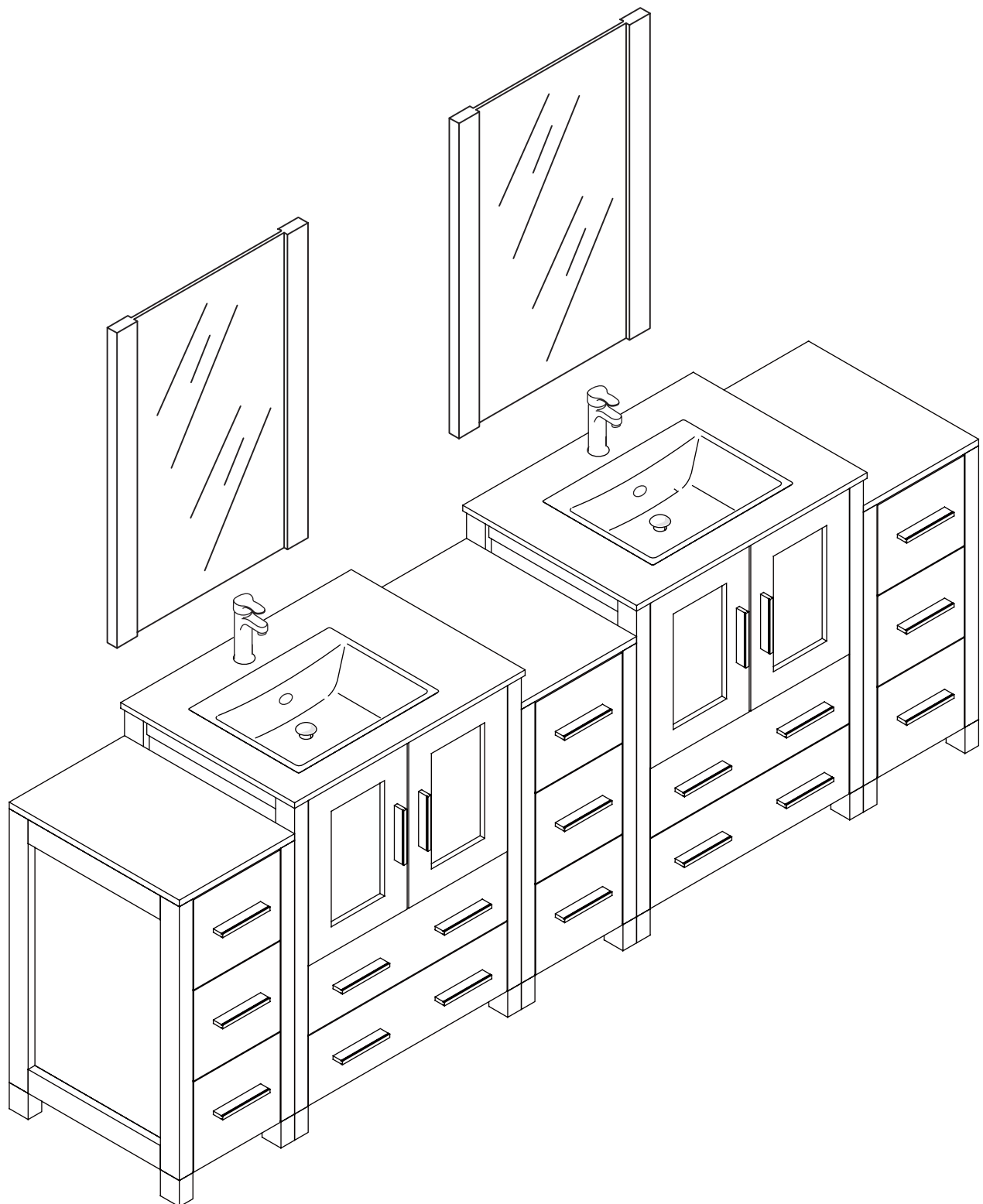
Install side cabinet top panel



# FVN62-72-UNS

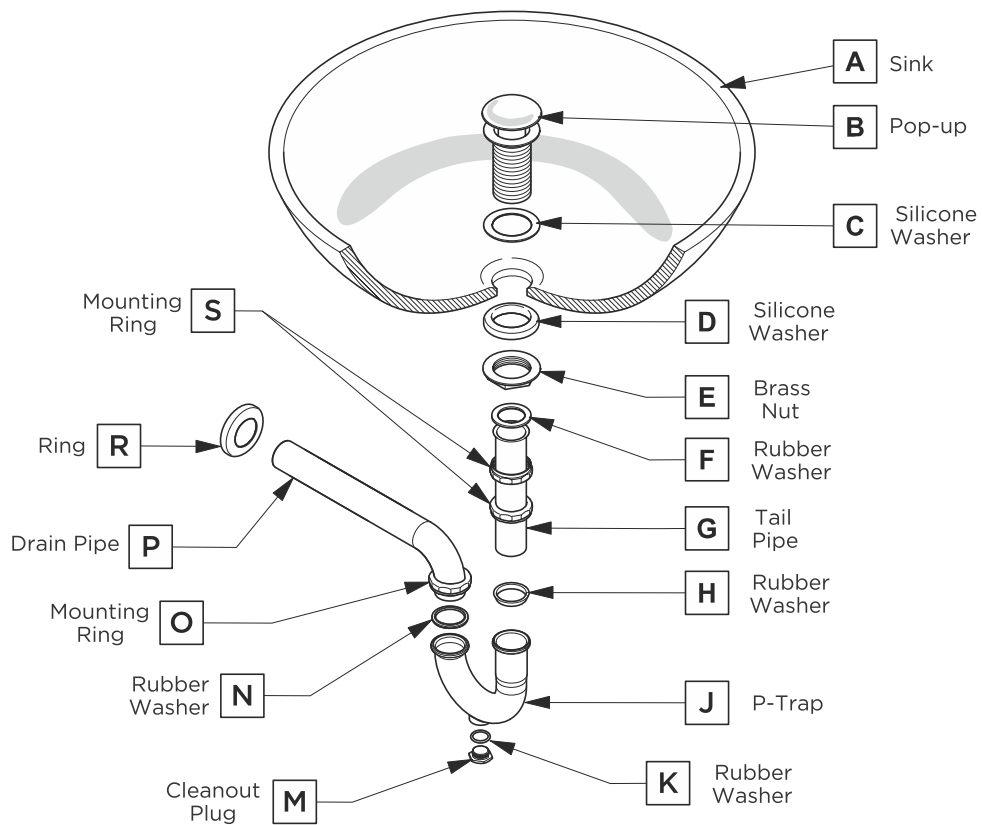
## TORINO

### INSTALLATION GUIDE



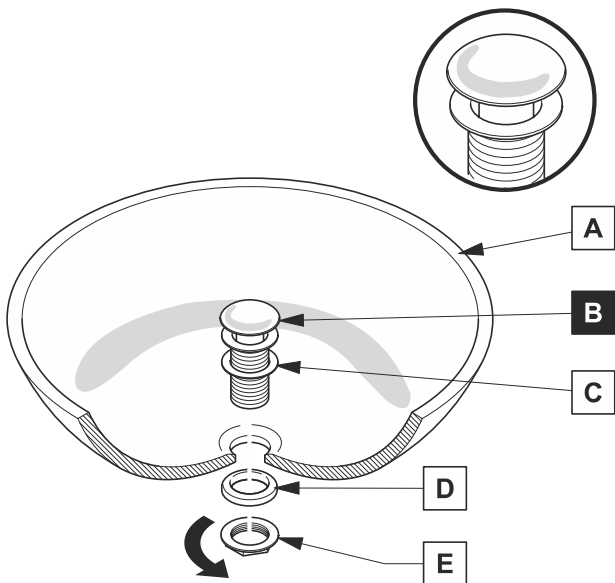
## P-TRAP AND POP-UP INSTALLATION INSTRUCTIONS

Your item may appear slightly different from the illustration



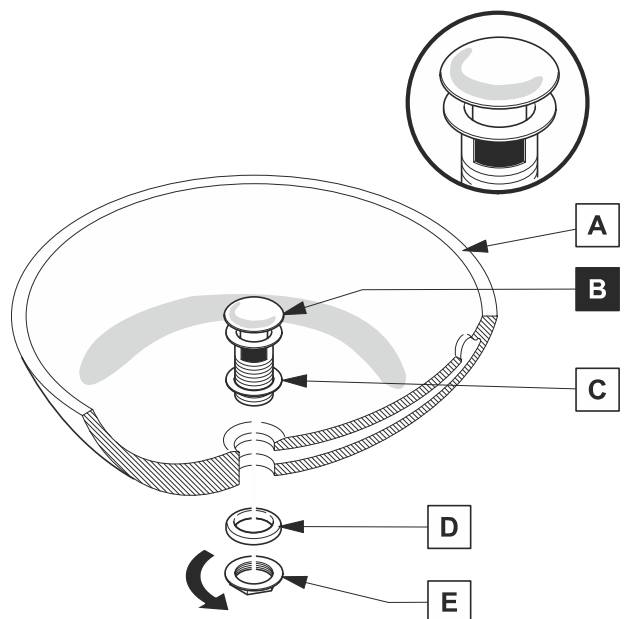
### POP-UP INSTALLATION

#### FOR SINKS WITHOUT OVERFLOW



OR

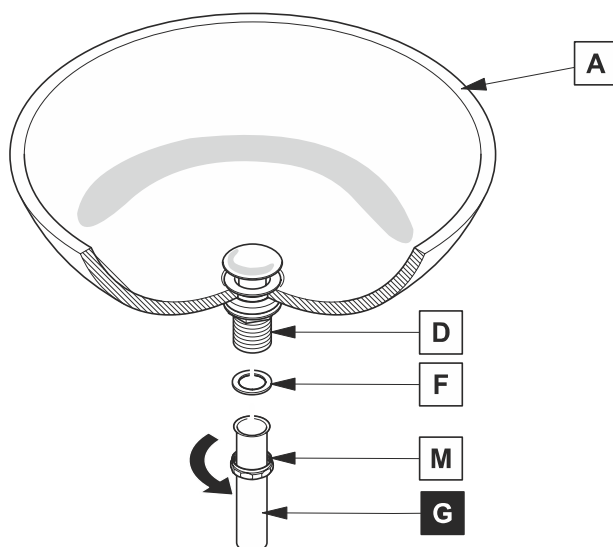
#### FOR SINKS WITH OVERFLOW



## P-TRAP INSTALLATION

1

Install tail pipe (G)



2

Install p-trap (J)

