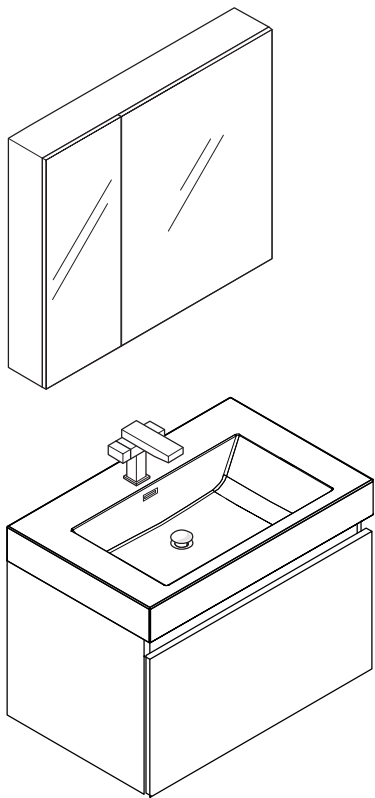
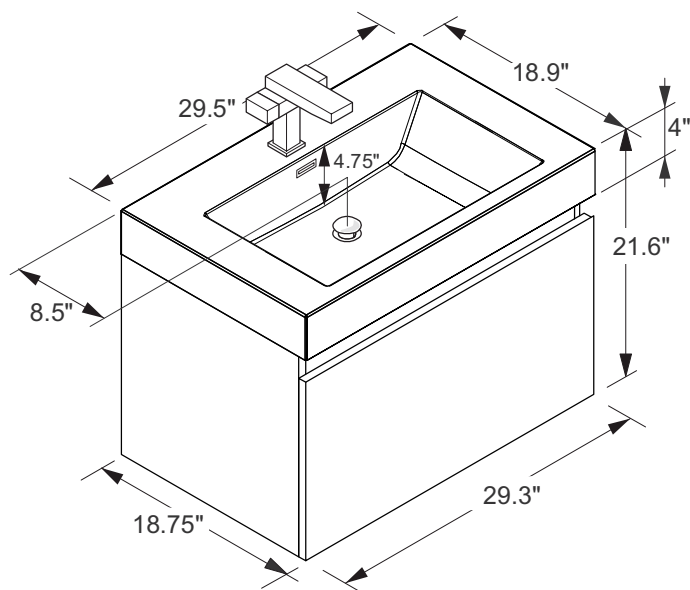


**FVN8007**  
**MEZZO**  
**INSTALLATION GUIDE**

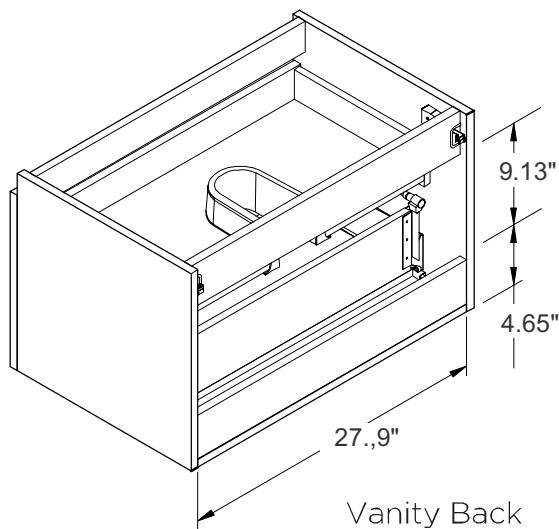
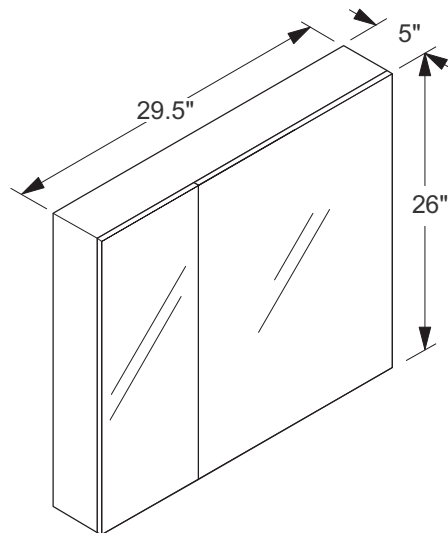
**kitchensource.com**  
1.800.667.8721



Vanity Front



Medicine Cabinet



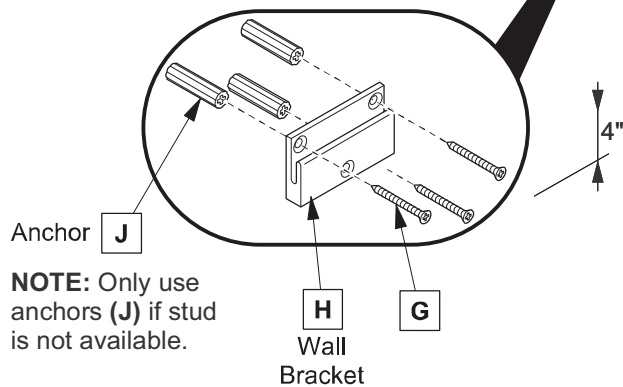
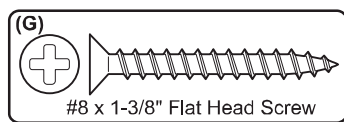
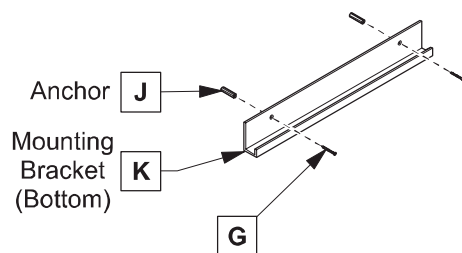
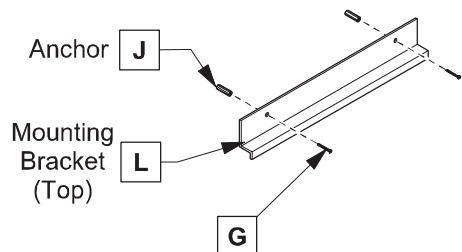
Vanity Back

 ALL DIMENSIONS & SPECIFICATIONS  
ARE APPROXIMATE AND SUBJECT TO  
CHANGE WITHOUT NOTICE.

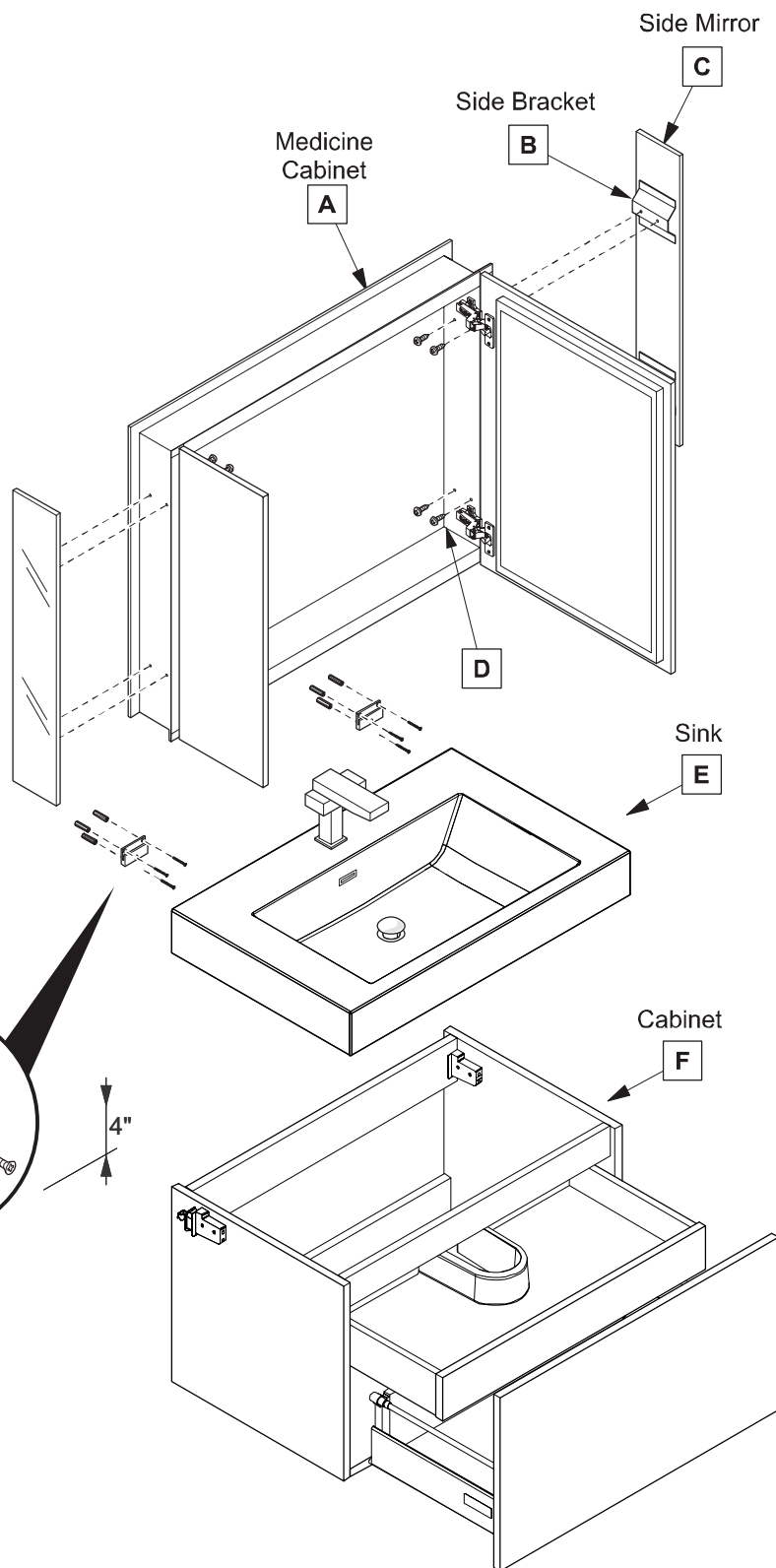
## TOOLS FOR ASSEMBLY



## PARTS



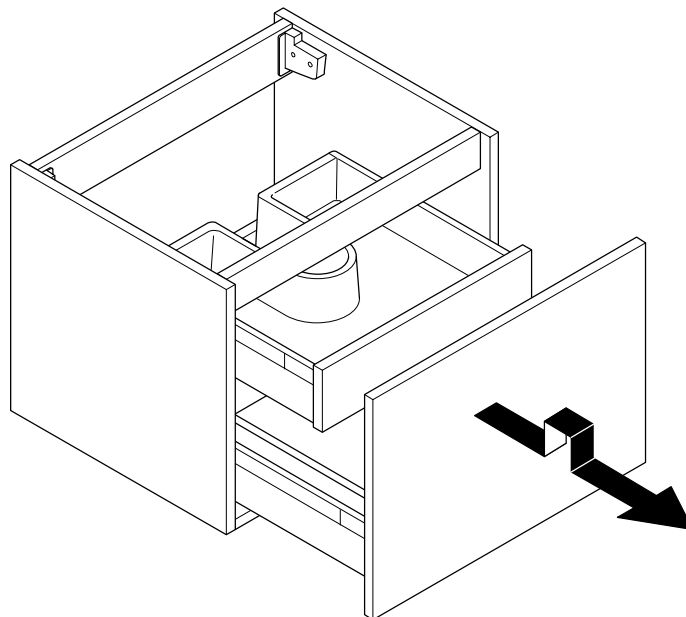
**NOTE:** Only use anchors (J) if stud is not available.



**1****DRAWER REMOVAL & INSTALLATION**

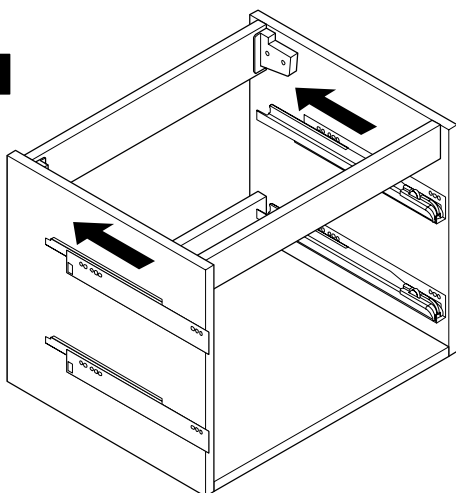
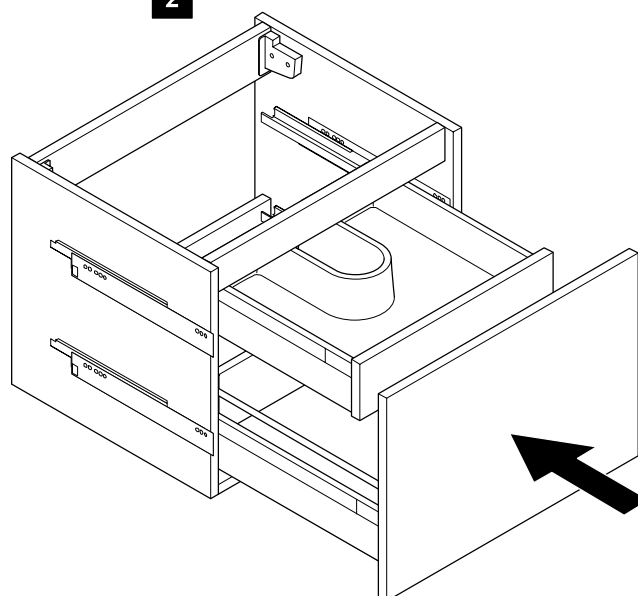
To remove drawer:

1. Pull the drawer open until the guides are fully extended.
2. Tilt drawer up and simultaneously pull the drawer out.

**2**

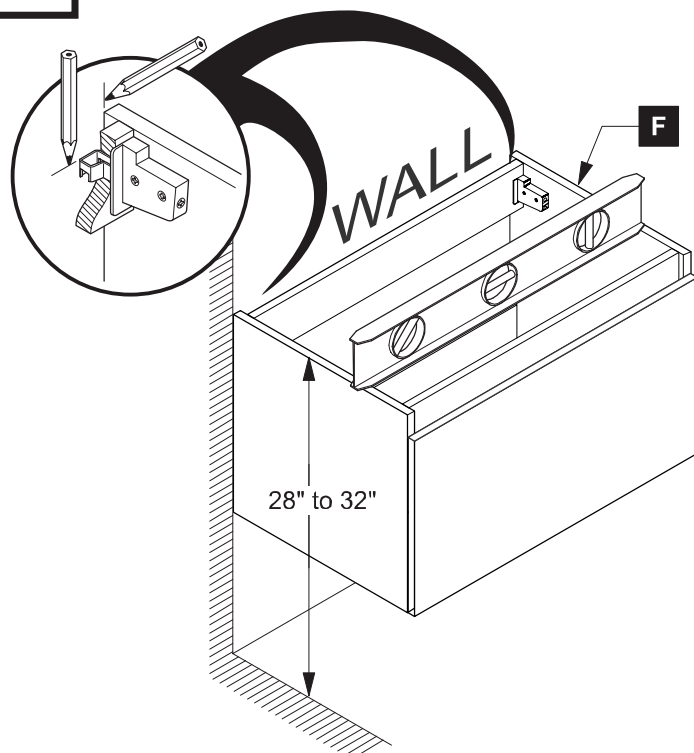
To instal drawer:

1. Line up drawer bottom with the glides on the right and left side.
2. Place the drawer on the glides and gently push into closed position.

**1****2**

1

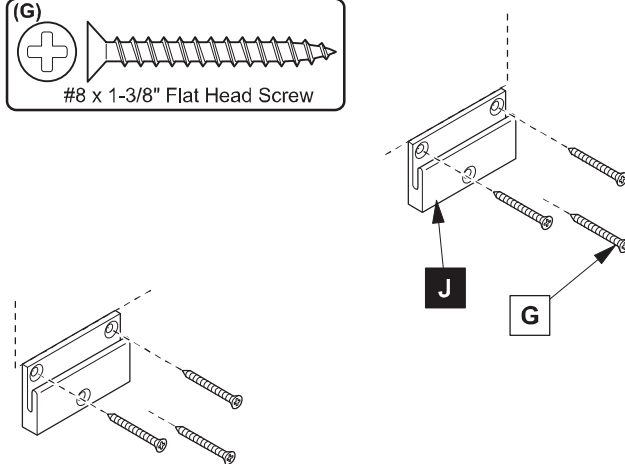
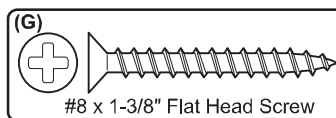
Locate cabinet (F) &amp; mark location on the wall



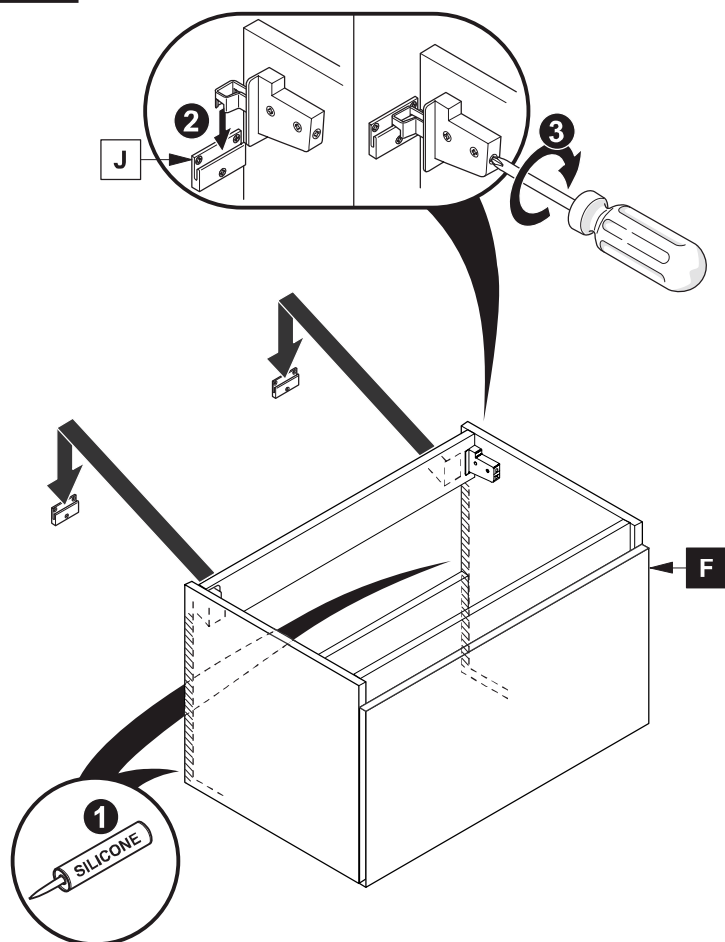
2

Install wall brackets (J)

**IMPORTANT:** Consult an expert for the proper screws / bolts to use when attaching to various wall constructions. Screws provided *do not* attach to all wall construction types.

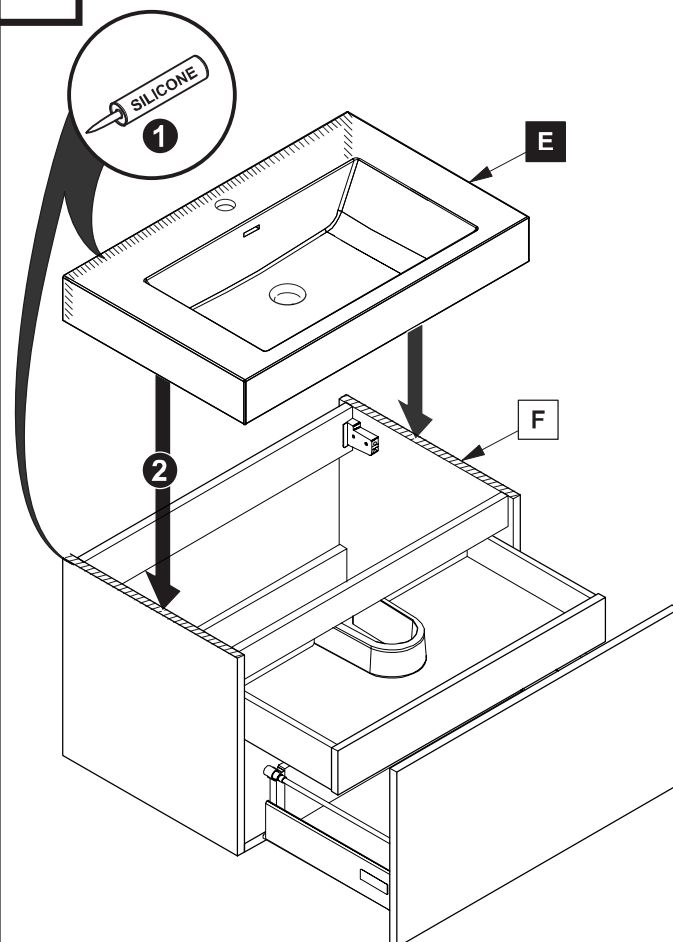


3



4

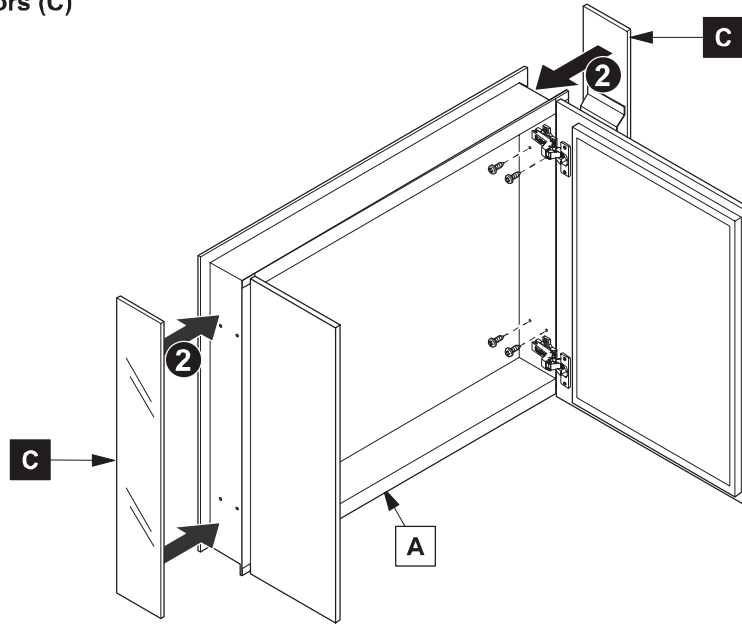
Apply silicone and install sink (E)



# MEDICINE CABINET INSTALLATION

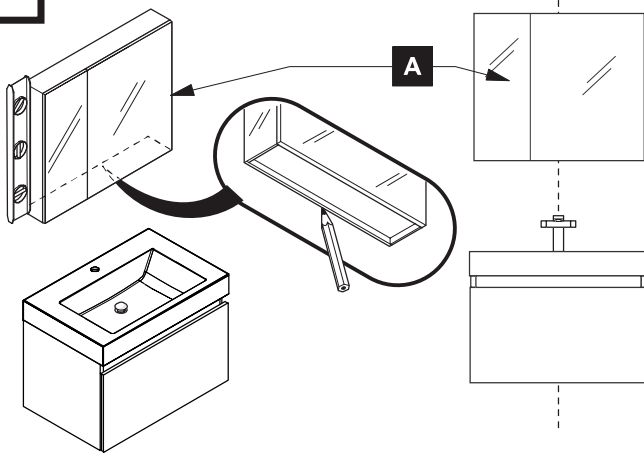
1

Install side mirrors (C)



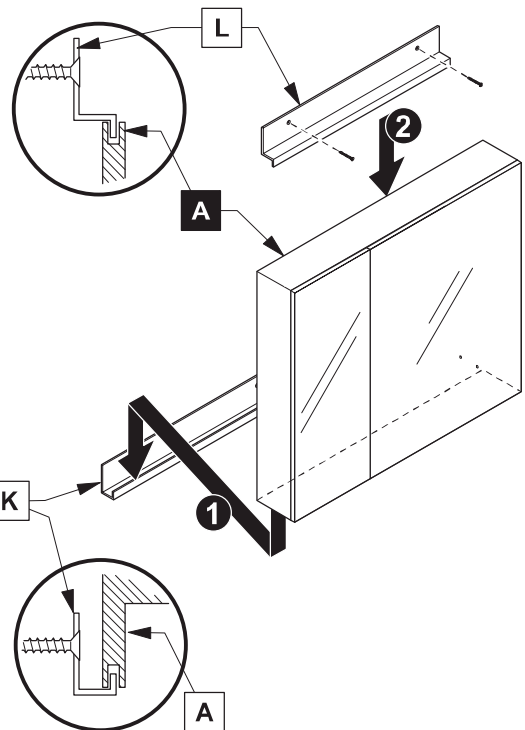
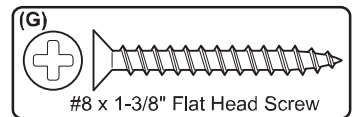
2

Mark cabinet (A) location



4

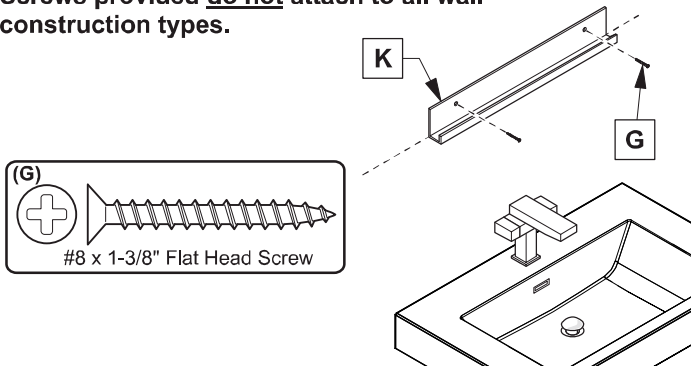
Install cabinet (A) and top bracket (L)



3

Install bottom bracket (K)

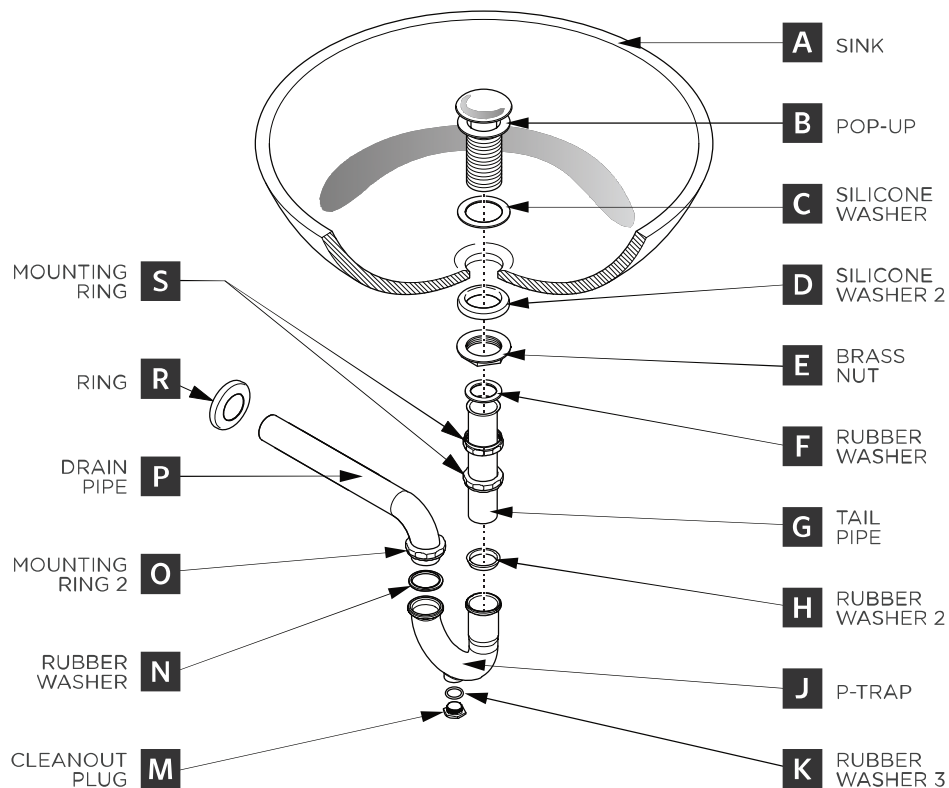
**IMPORTANT:** Consult an expert for the proper screws/bolts to use when attaching to various wall constructions. Screws provided do not attach to all wall construction types.



## P-TRAP & POP-UP

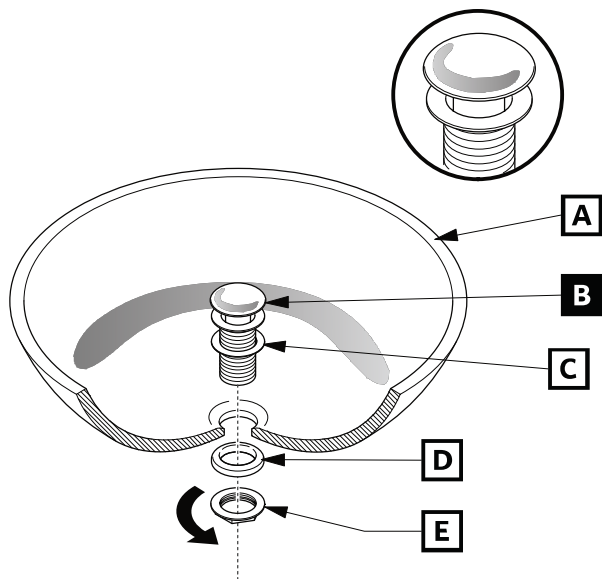
### INSTALLATION INSTRUCTIONS

Your item may appear slightly different from the illustration.



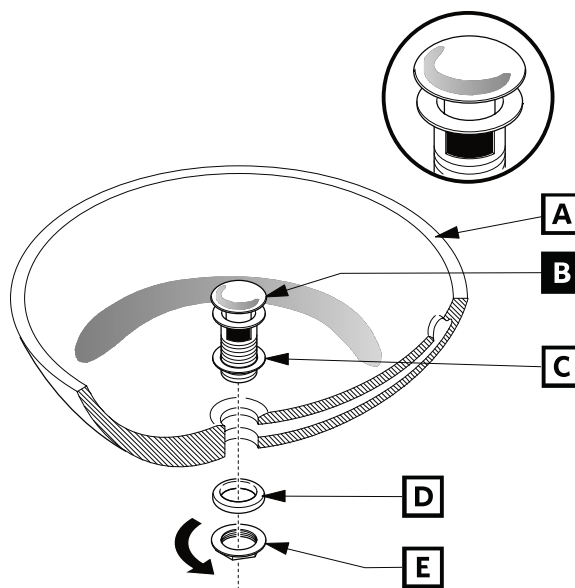
### POP-UP INSTALLATION

#### FOR SINKS WITHOUT OVERFLOW



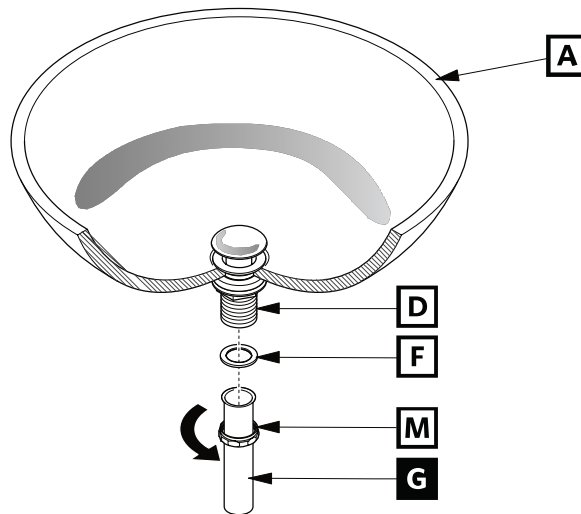
OR

#### FOR SINKS WITH OVERFLOW



## P-TRAP INSTALLATION

### 1 Install tail pipe (G)



### 2 Install P-trap (J)

