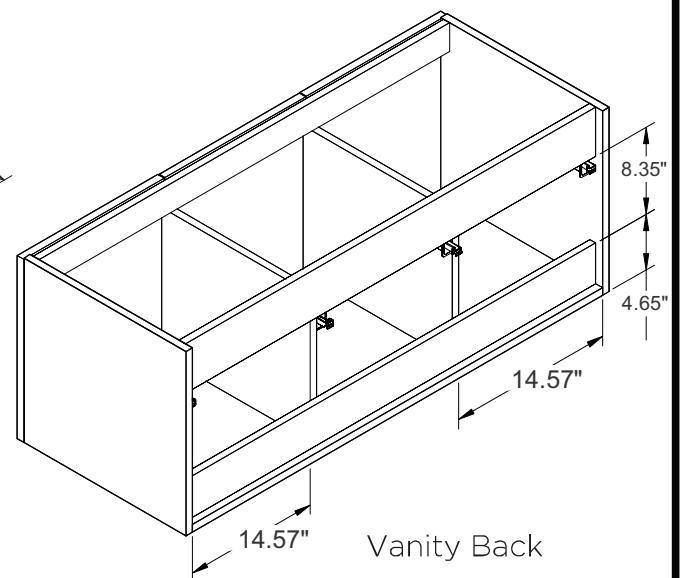
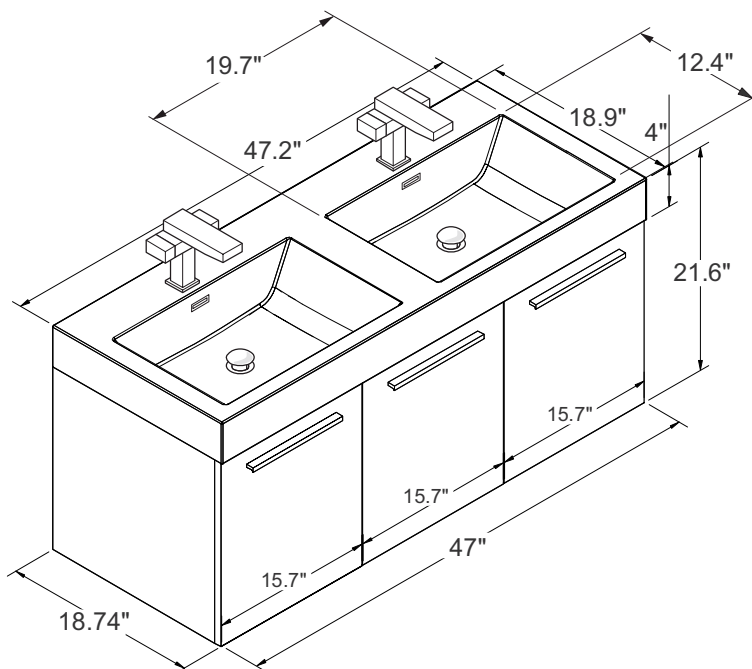
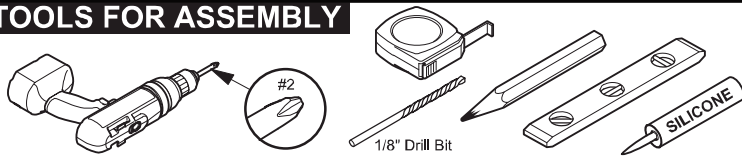


Vanity Front

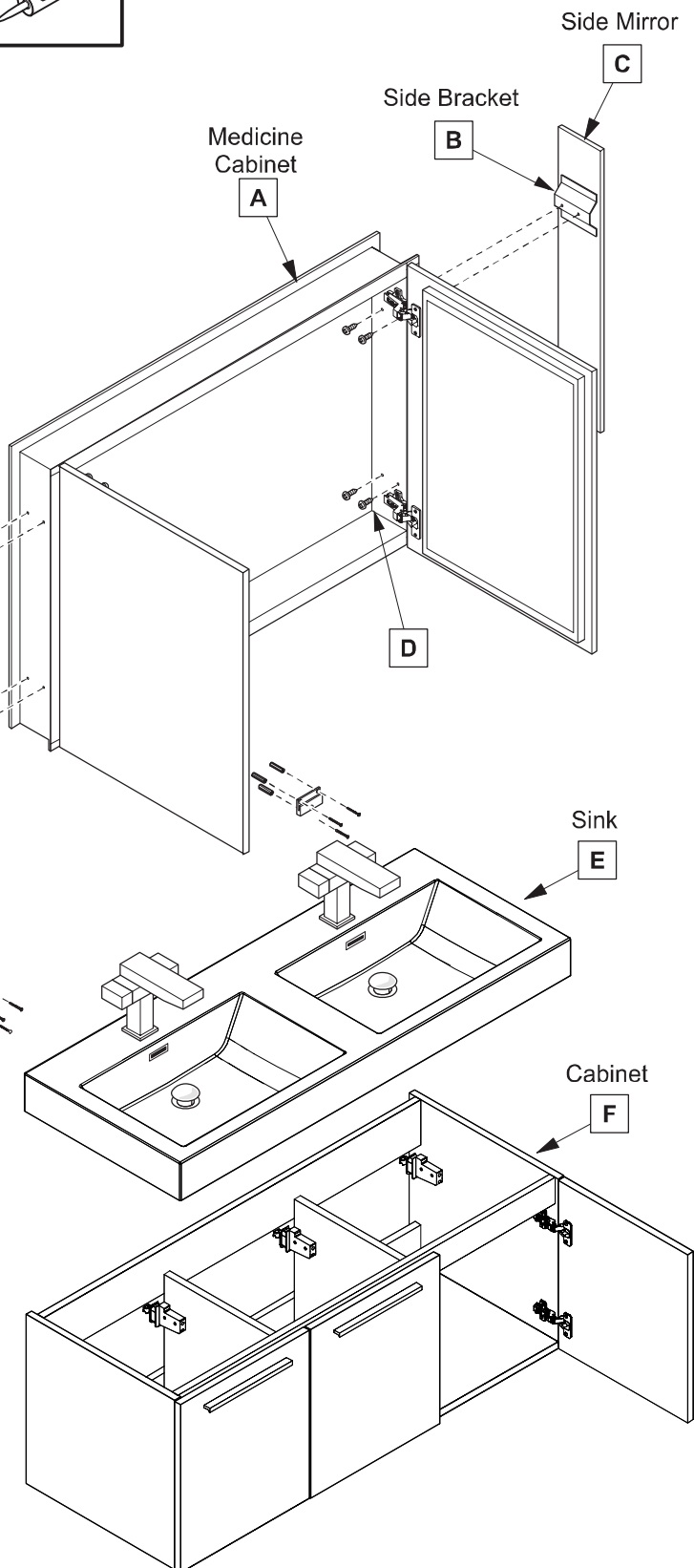
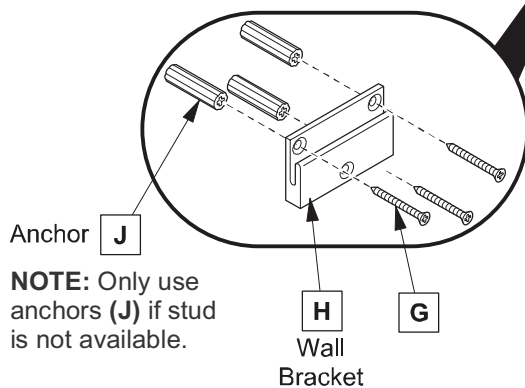
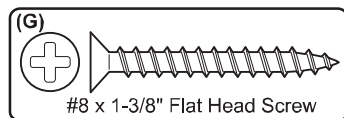
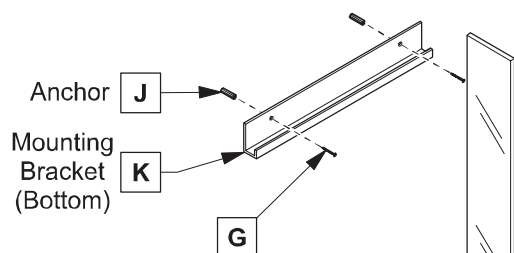
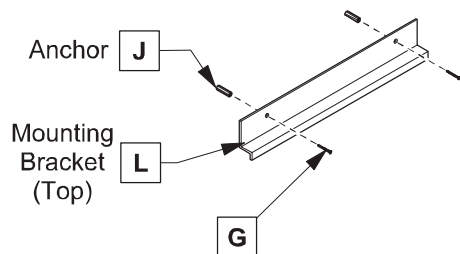


ALL DIMENSIONS & SPECIFICATIONS
ARE APPROXIMATE AND SUBJECT TO
CHANGE WITHOUT NOTICE.

TOOLS FOR ASSEMBLY

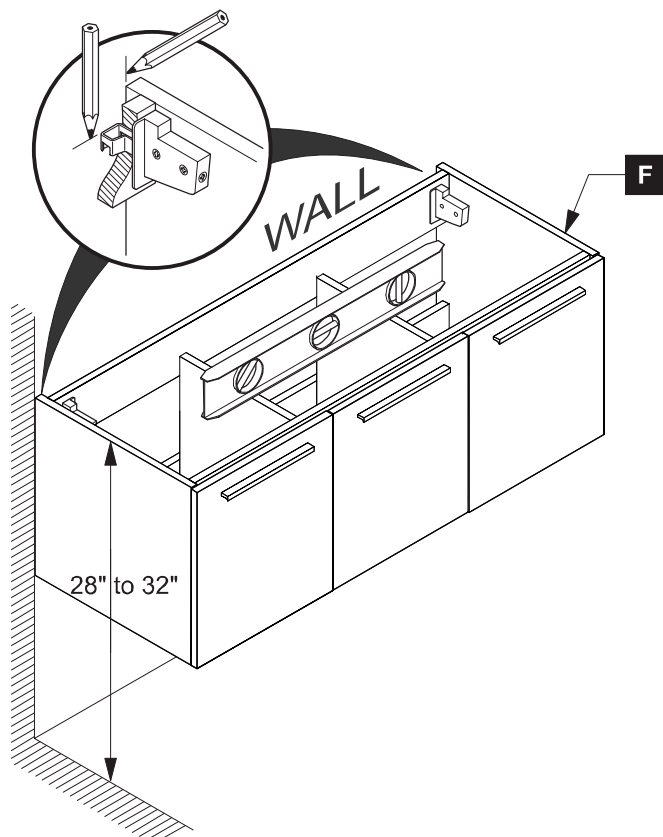


PARTS



1

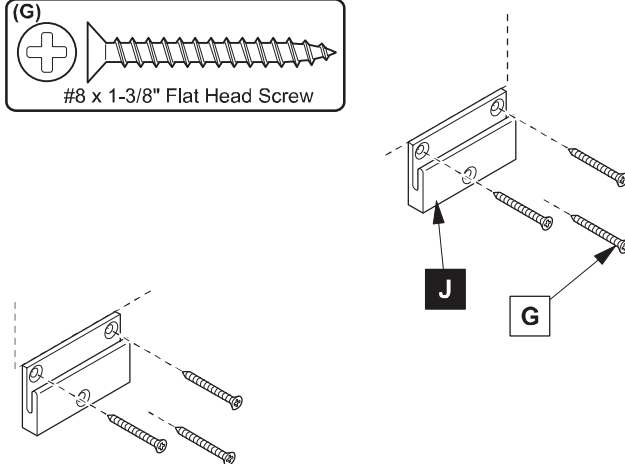
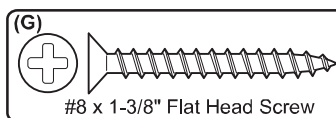
Locate cabinet (F) & mark location on the wall



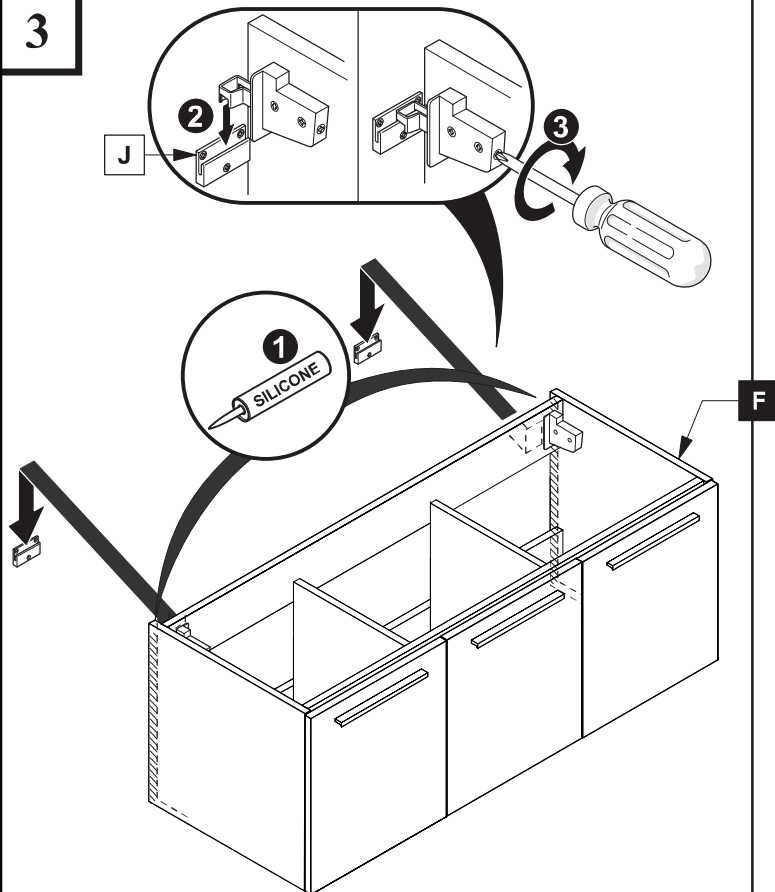
2

Install wall brackets (J)

IMPORTANT: Consult an expert for the proper screws / bolts to use when attaching to various wall constructions. Screws provided *do not* attach to all wall construction types.

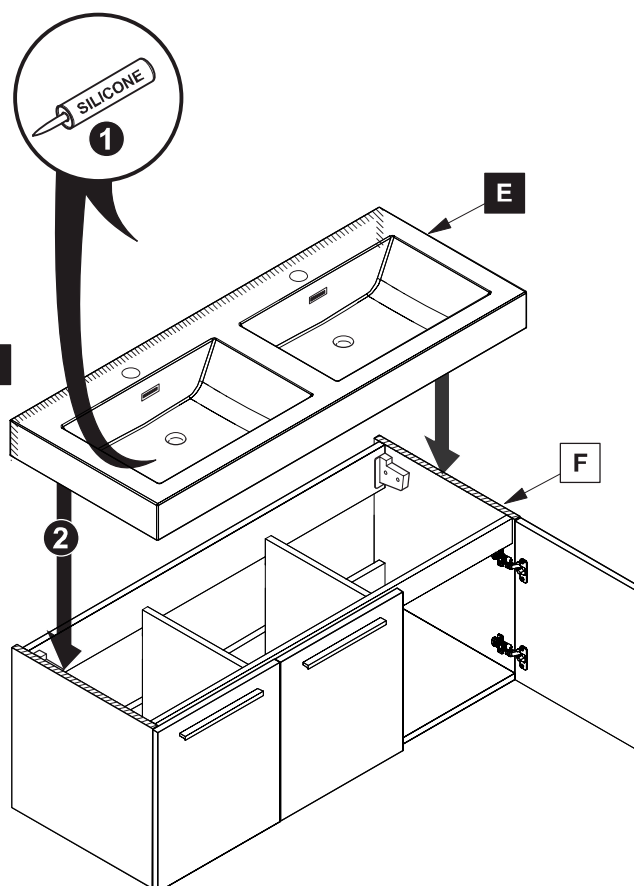


3



4

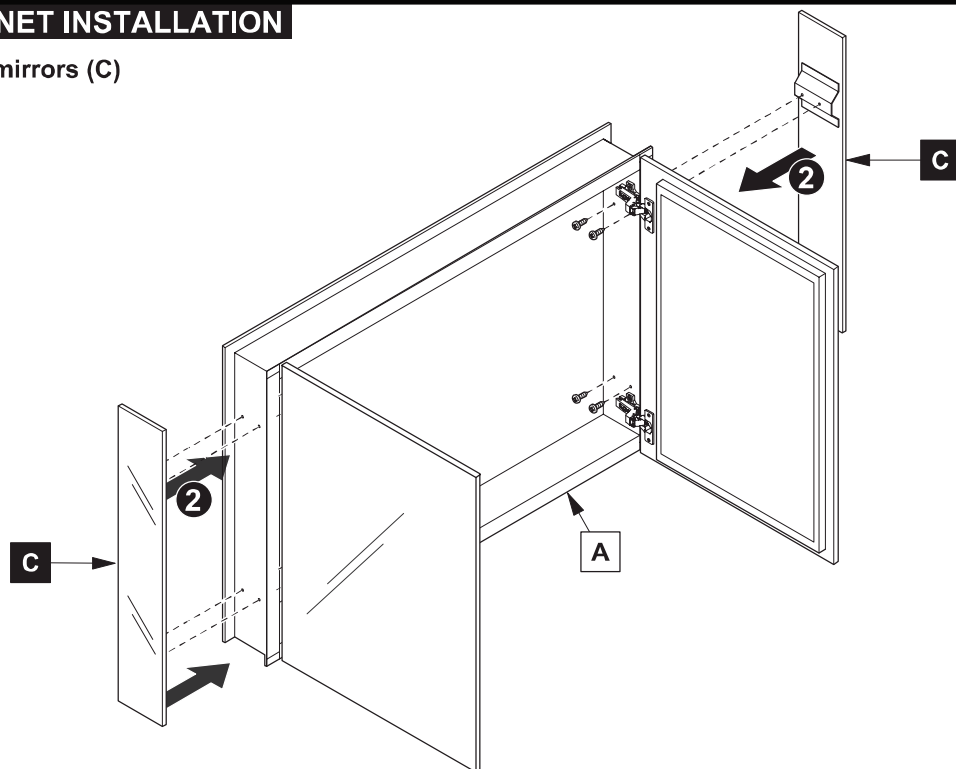
Apply silicone and install sink (E)



MEDICINE CABINET INSTALLATION

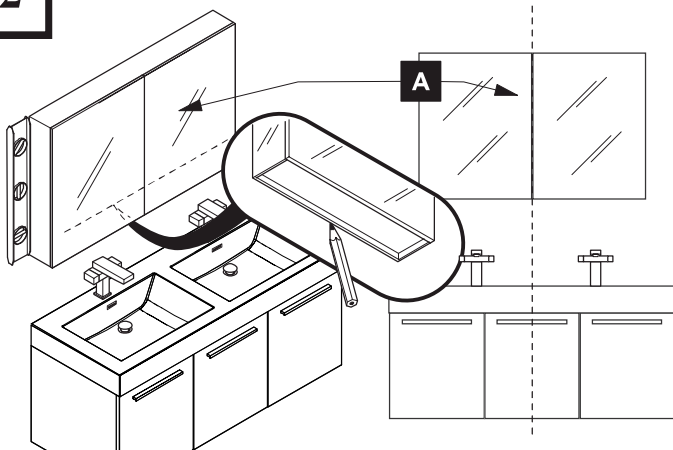
1

Install side mirrors (C)



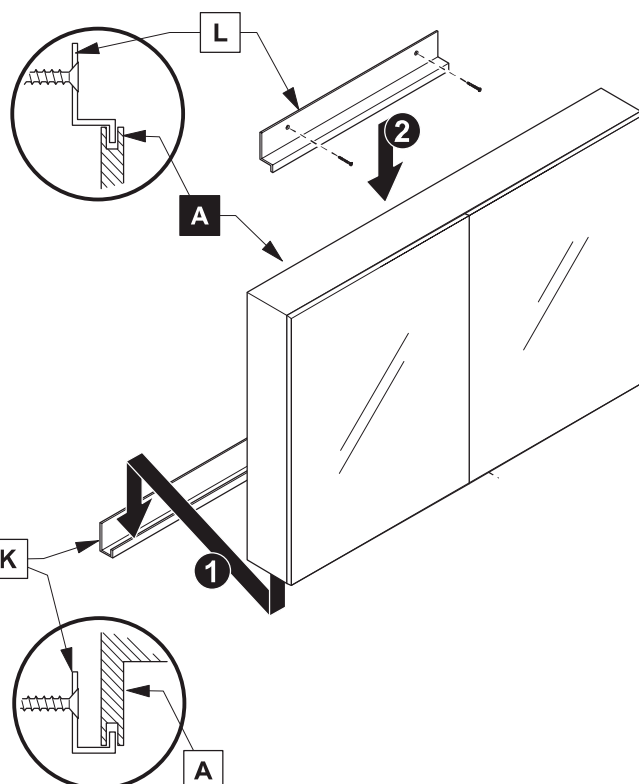
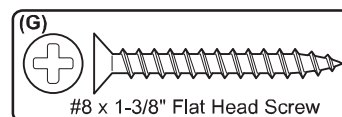
2

Mark cabinet (A) location



4

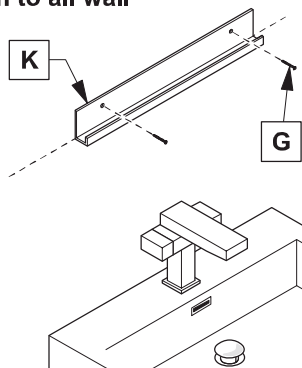
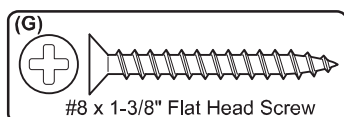
Install cabinet (A) and top bracket (L)



3

Install bottom bracket (K)

IMPORTANT: Consult an expert for the proper screws/bolts to use when attaching to various wall constructions. Screws provided do not attach to all wall construction types.



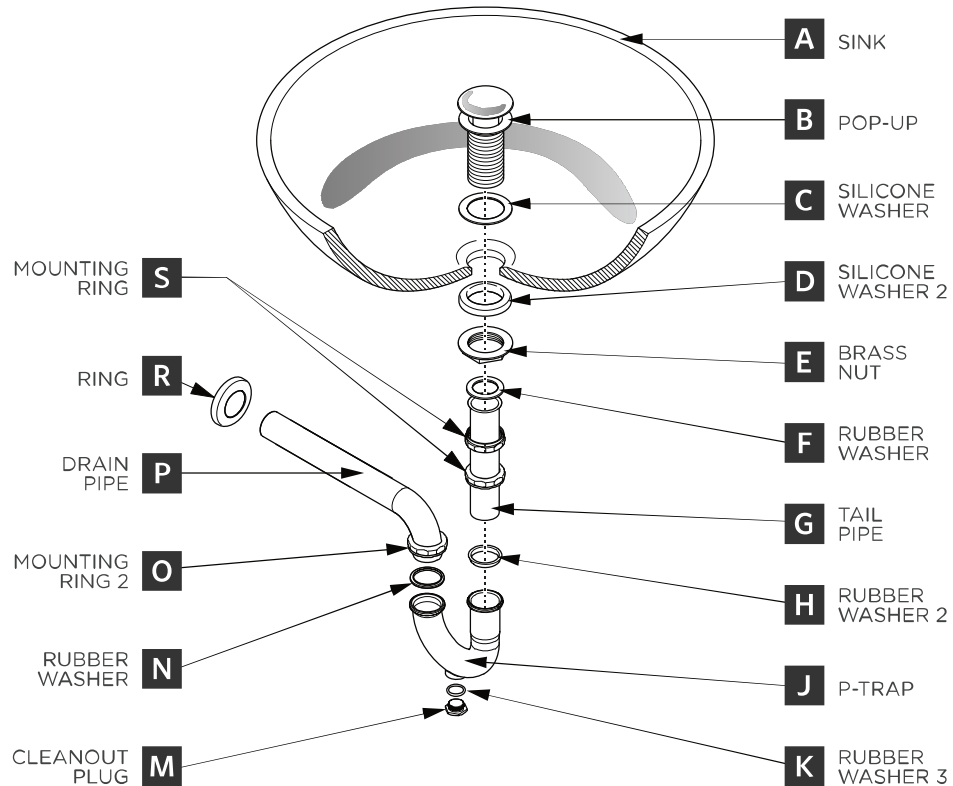
FVN8092-D | VISTA | INSTALLATION GUIDE

PAGE 4

P-TRAP & POP-UP

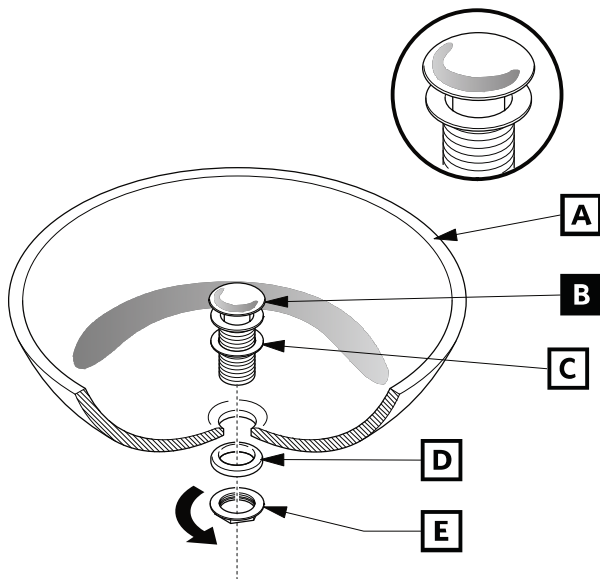
INSTALLATION INSTRUCTIONS

Your item may appear slightly different from the illustration.



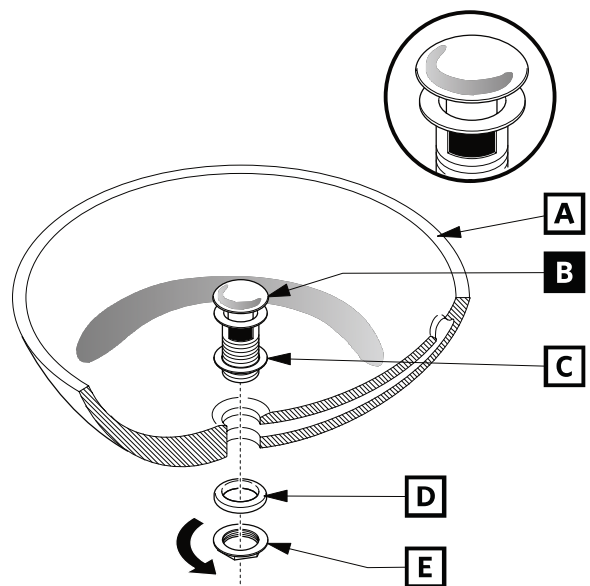
POP-UP INSTALLATION

FOR SINKS WITHOUT OVERFLOW



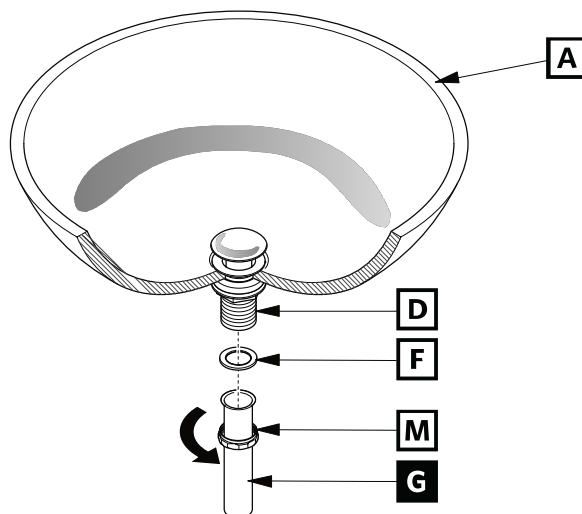
OR

FOR SINKS WITH OVERFLOW



P-TRAP INSTALLATION

1 Install tail pipe (G)



2 Install P-trap (J)

