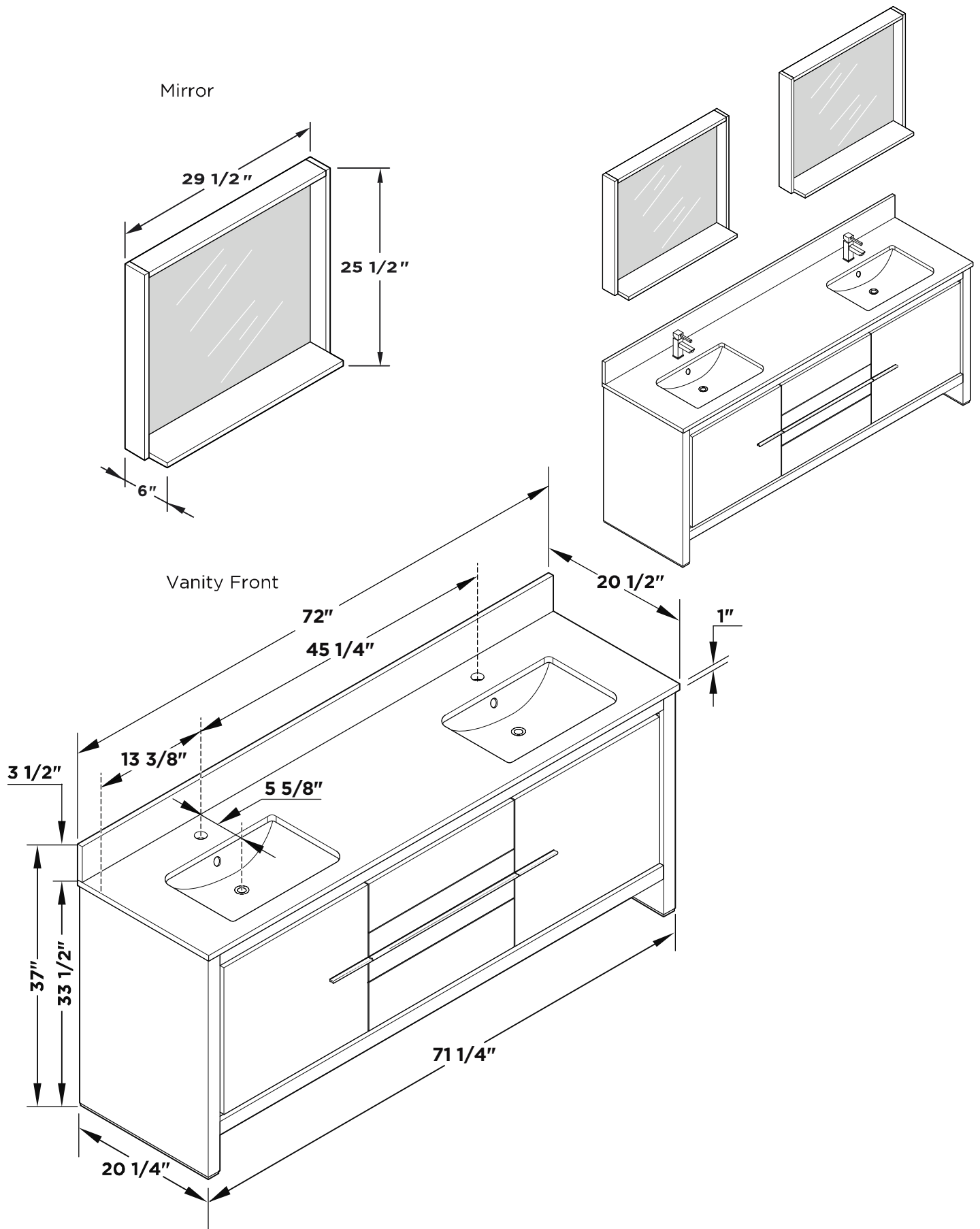
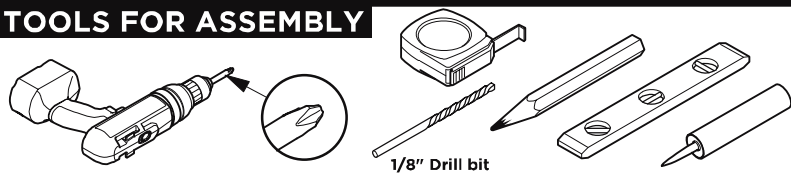


FVN8172
ALLIER
INSTALLATION GUIDE

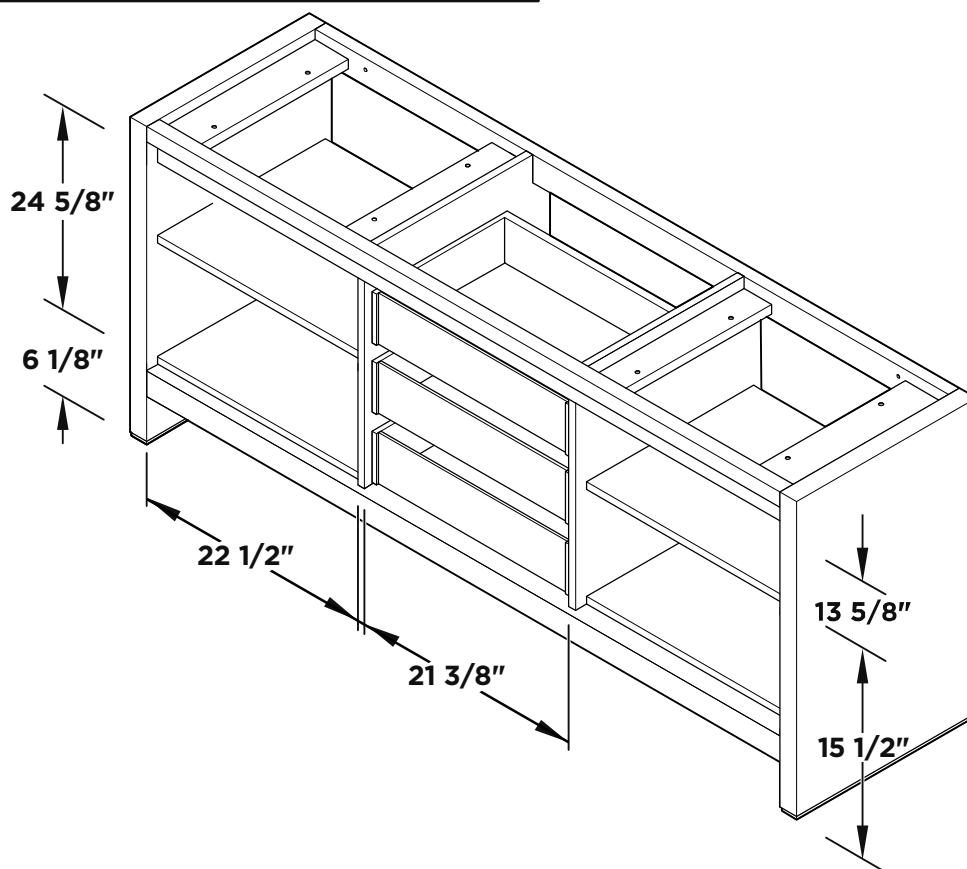
kitchensource.com
1.800.667.8721



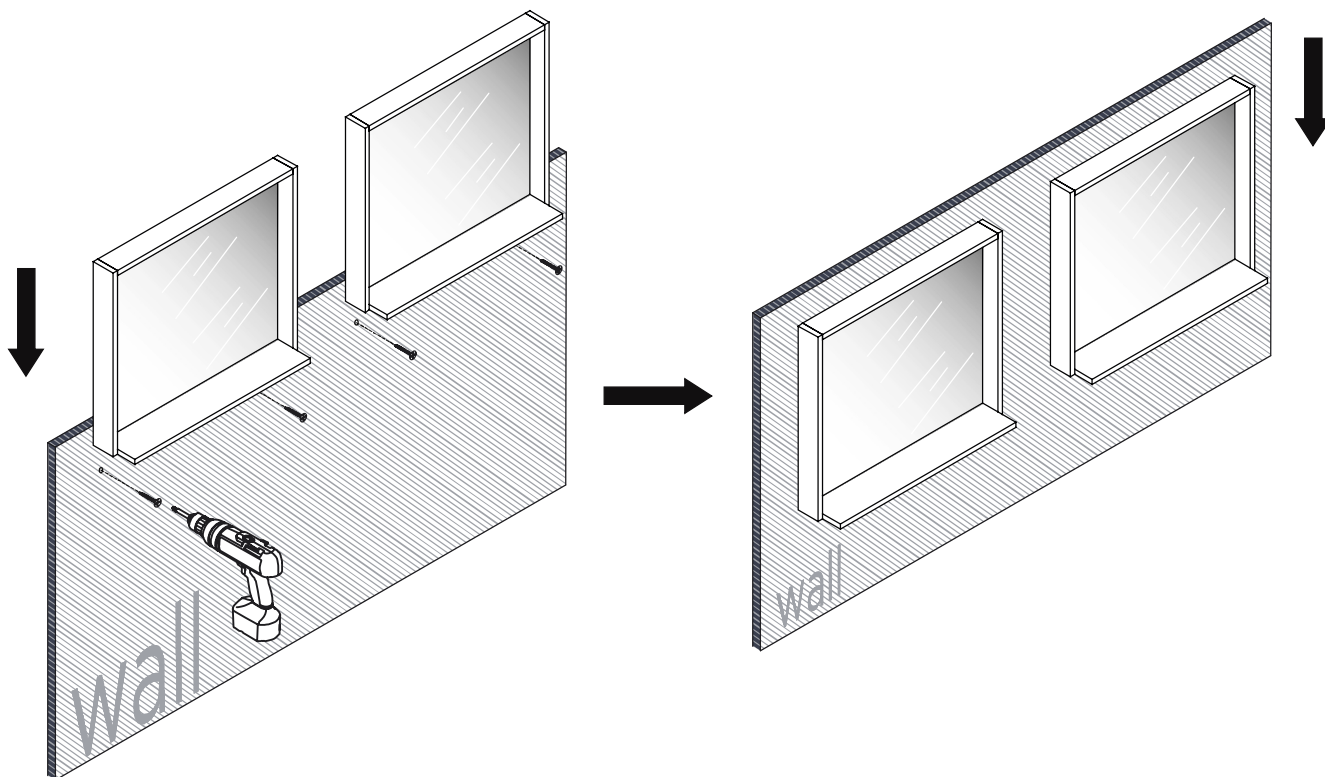
TOOLS FOR ASSEMBLY



Vanity Back

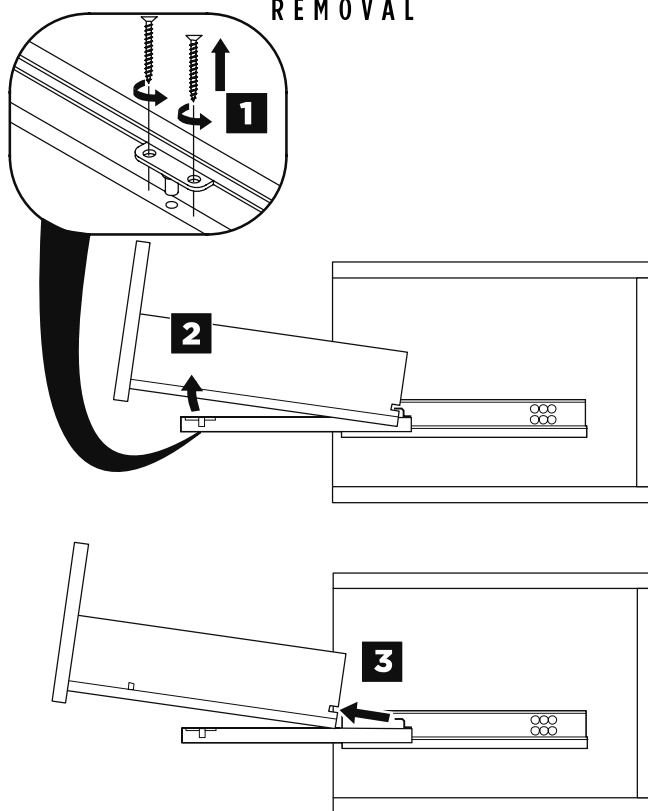


MIRROR INSTALLATION

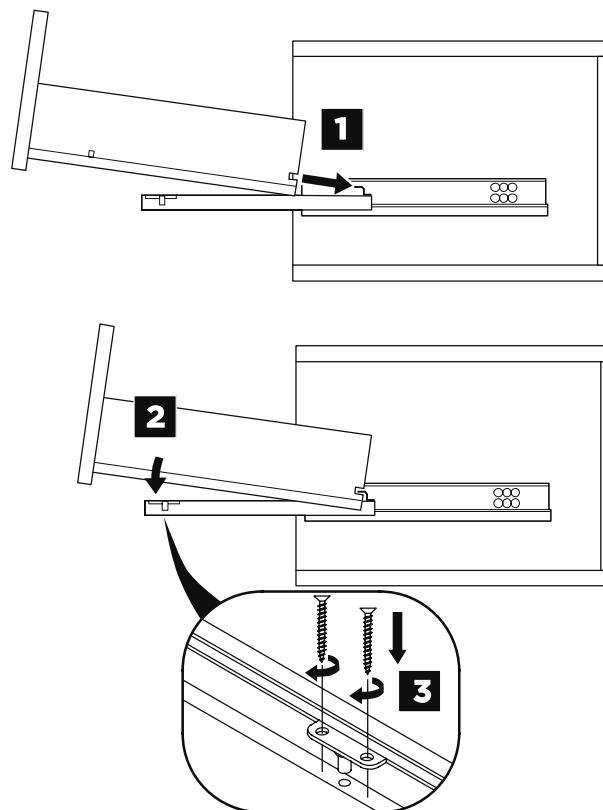


DRAWER REMOVAL & INSTALLATION

REMOVAL



INSTALLATION

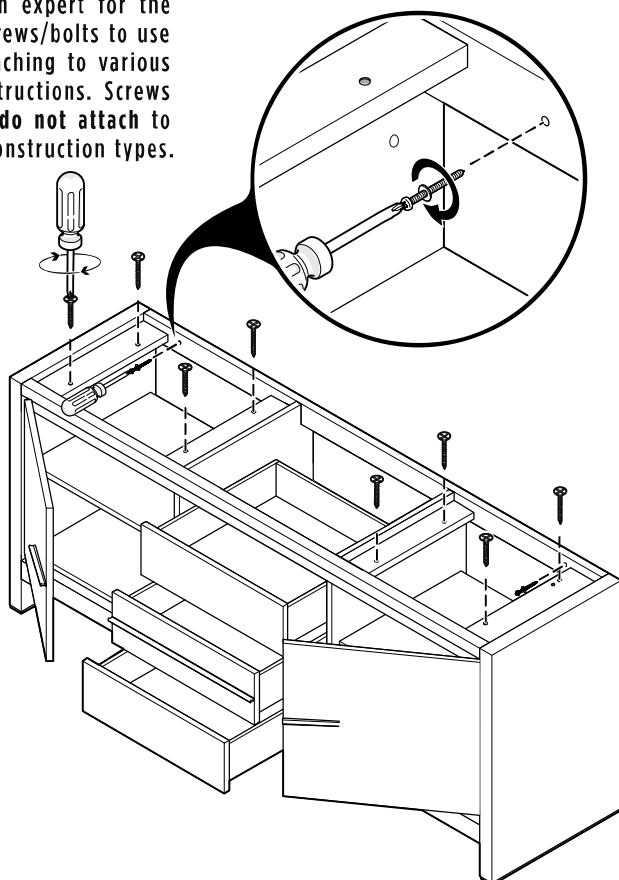


1

Attach Screws

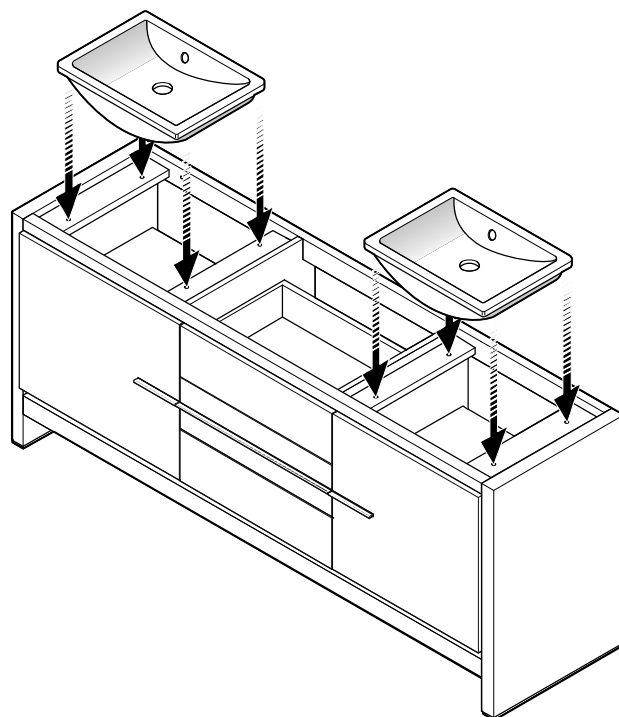
IMPORTANT:

Consult an expert for the proper screws/bolts to use when attaching to various wall constructions. Screws provided **do not** attach to all wall construction types.



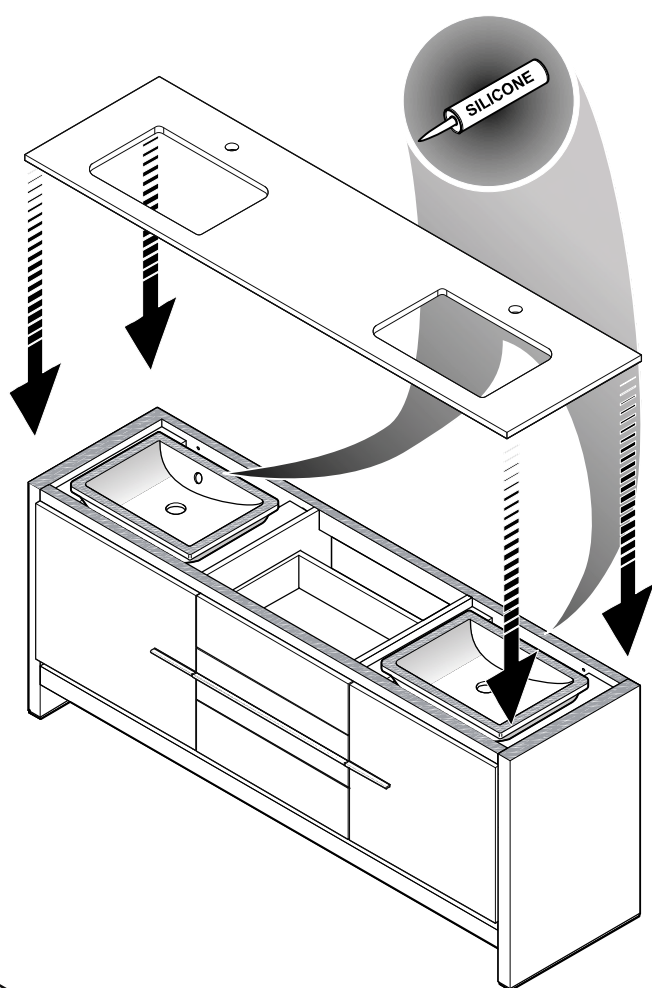
2

Install Sinks



3

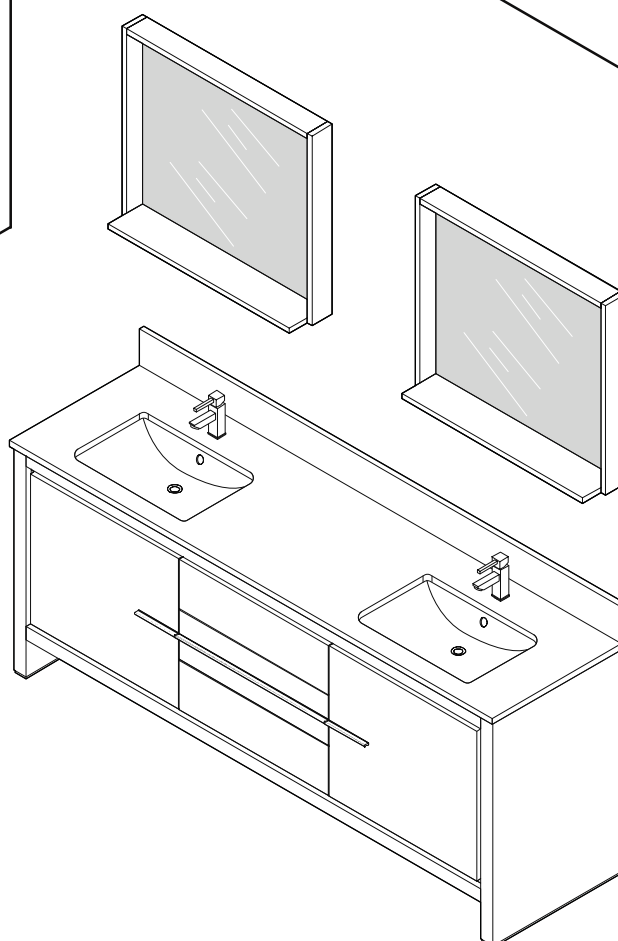
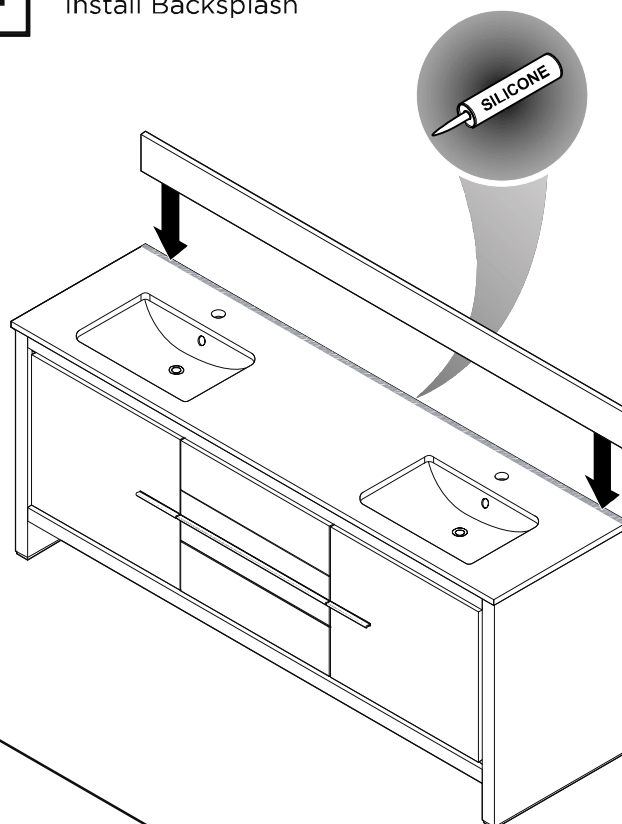
Install Countertop



FINAL
PRODUCT
FVN8172

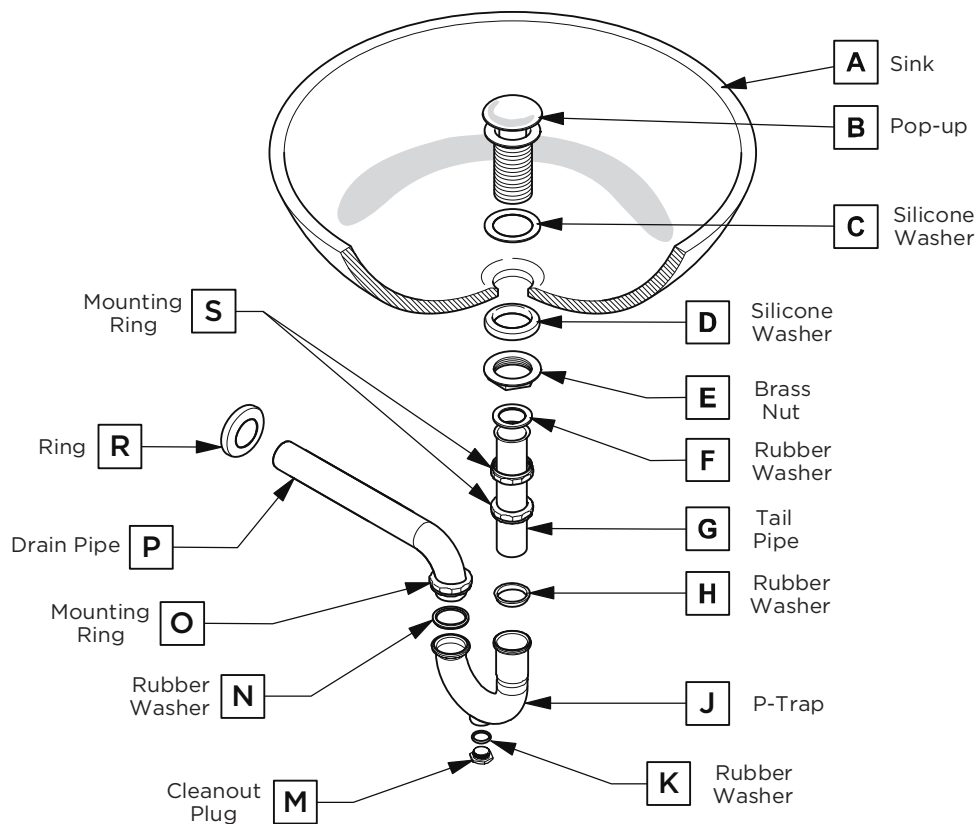
4

Install Backsplash



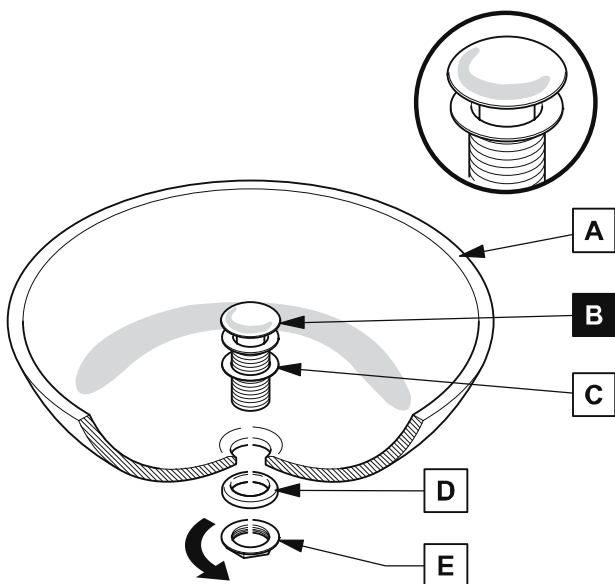
P-TRAP AND POP-UP INSTALLATION INSTRUCTIONS

Your item may appear slightly different from the illustration



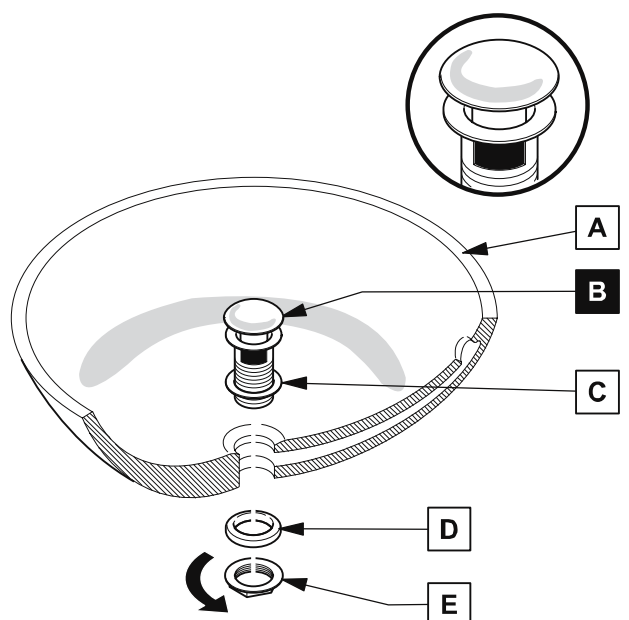
POP-UP INSTALLATION

FOR SINKS WITHOUT OVERFLOW



OR

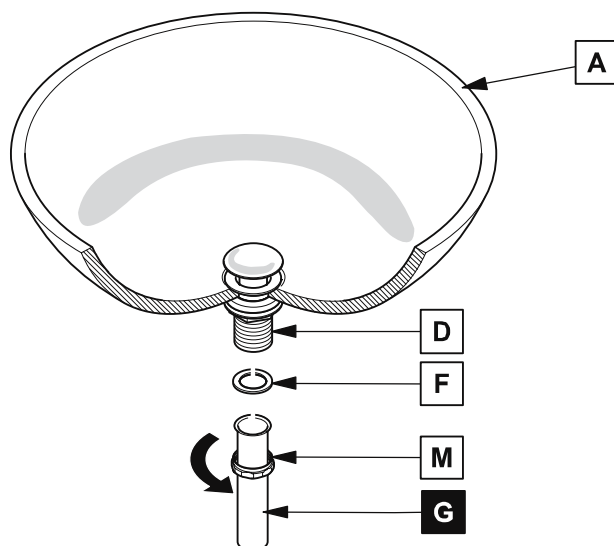
FOR SINKS WITH OVERFLOW



P-TRAP INSTALLATION

1

Install tail pipe (G)



2

Install p-trap (J)

