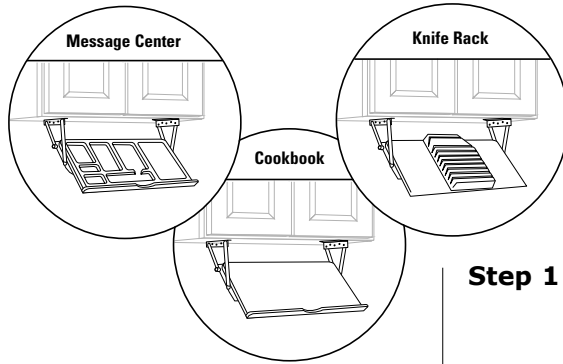


UNDERCABINET STORAGE ITEMS

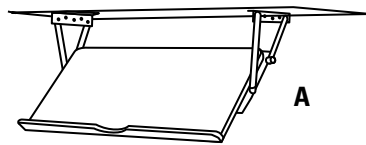
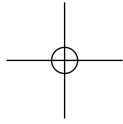
Installation Instructions

Inspect all parts and read all instructions prior to beginning assembly and installation.



Parts Included

- A. Folding Rack
- B. Mounting Screw Package
- C. Template



Tools Required

- Phillips screwdriver
- Measuring Tape
- Pencil
- Drill with 1/16" bit for pilot holes
- Tape

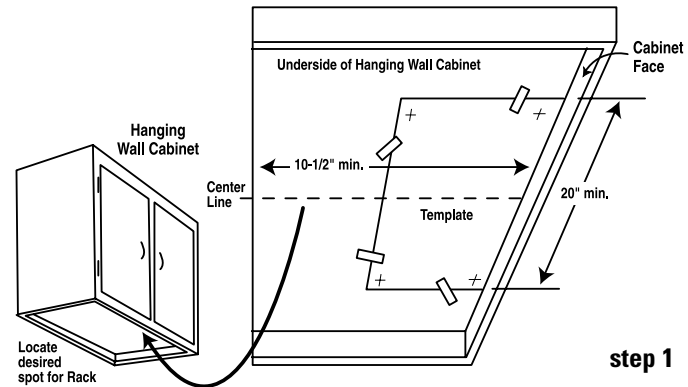
Product Assemblies

- UCCB - Undercabinet Cookbook
- UCKR - Undercabinet Knife Rack
- UCMC - Undercabinet Message Center

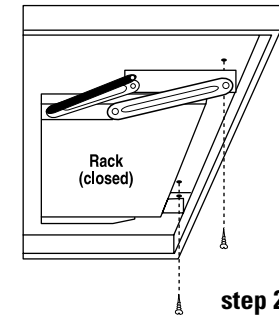


Real Solutions
For Real Life.™

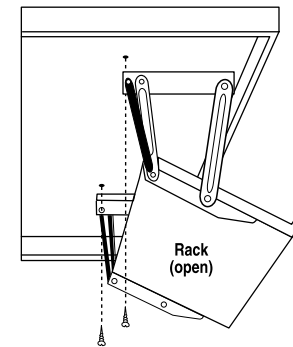
Step 1 Locate desired spot and tape template in place. If rack is to be centered under cabinet, locate center line. If rack is to be located in a more convenient spot, center line is not important as long as template clears any under-cabinet obstructions.



Step 2 Place closed folding rack against template, aligning screw holes in hanging bracket with screw positions on template. Attach using two (2) front screws only, one screw in each bracket.



Step 3 While supporting the back of the unit, carefully open folding rack to expose the two rear screw holes in hanging bracket. Attach using two screws, one in each bracket.



Caution: Turn screws in snugly, but do not overturn or overtighten. Mounting surface may be soft wood or some type of laminate where excess torque could cause screw threads to strip out.

Caution: Spring-loaded mechanism in open position can snap closed on hand or fingers. DO NOT open the folding shelf until AFTER each front screw is attached through the hanging bracket onto cabinet.

Use & Care

Only use mild soap and water to clean the surface. Never use alcohol, window sprays, kitchen scouring compounds or solvents. These can cause damage to the material and or affect the appearance.

CENTER LINE

FRONT

DO NOT DRILL COMPLETELY THROUGH CABINET BOTTOM

17-5/16" Mounting Centerlines

FOLD ON DOTTED LINE