

568-20 INSTALLATION INSTRUCTIONS

STEP 1

Inspect contents of carton to insure all items are present. Photo layout features kit No. 568-20-3 all other kits are installed in the same manner.

STEP 2

Lift the support items to a vertical position; use the wrench provided to tighten the screws at the end of the supports ensuring that the bosses fit into their respective holes.

STEP 3

Fit the ends of the basket(s), (wire frames) into the holes on the support arms and tighten the metal screws (shorter screw) in the basket(s) with the wrench provided. Note: Do Not Use The Longer Wood Screws. the shorter metal screws must be used.

NOTE: For 568-20 series be sure that the middle & top wires are assembled so that the polymer waste containers will be closest to the front of the cabinet.

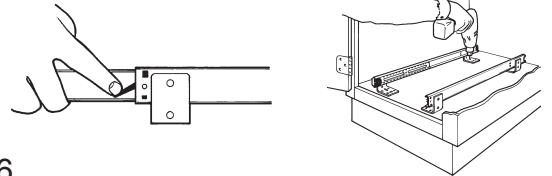
STEP 4

Place the template in the cabinet in the desired location, aligning the template with the front edge of the cabinet. Mark hole location(s). Drill 3/32" pilot holes.

STEP 5

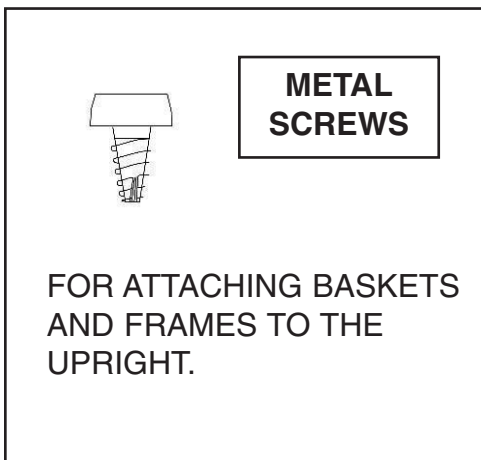
Place unit in cabinet and attach slide feet to the cabinet floor using provided screws.

NOTE: If sufficient clearance to attach slide feet is not available, slides may be removed from the framework by pulling framework completely out and depressing trigger to release framework from the slides.



STEP 6

Product can be door mounted using series of holes on front support frames.



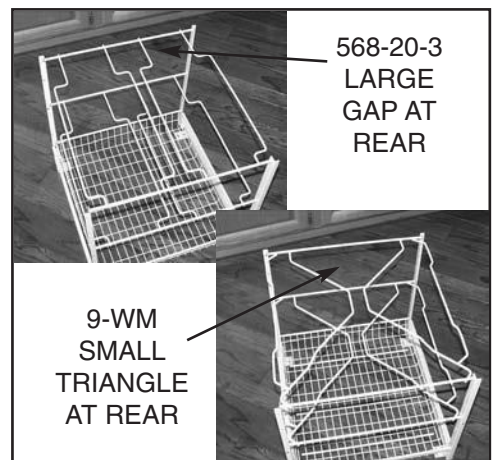
STEP 1



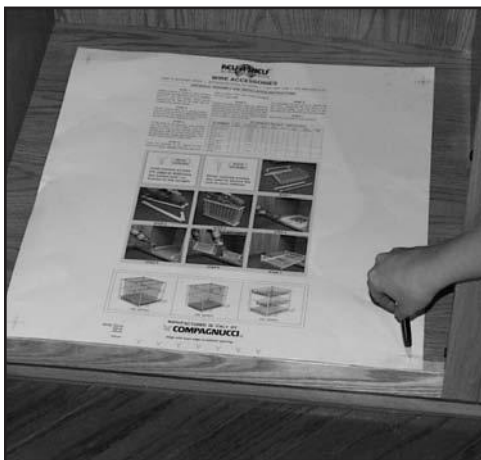
STEP 2



STEP 3



STEP 3 NOTE



STEP 4



STEP 5



STEP 6

