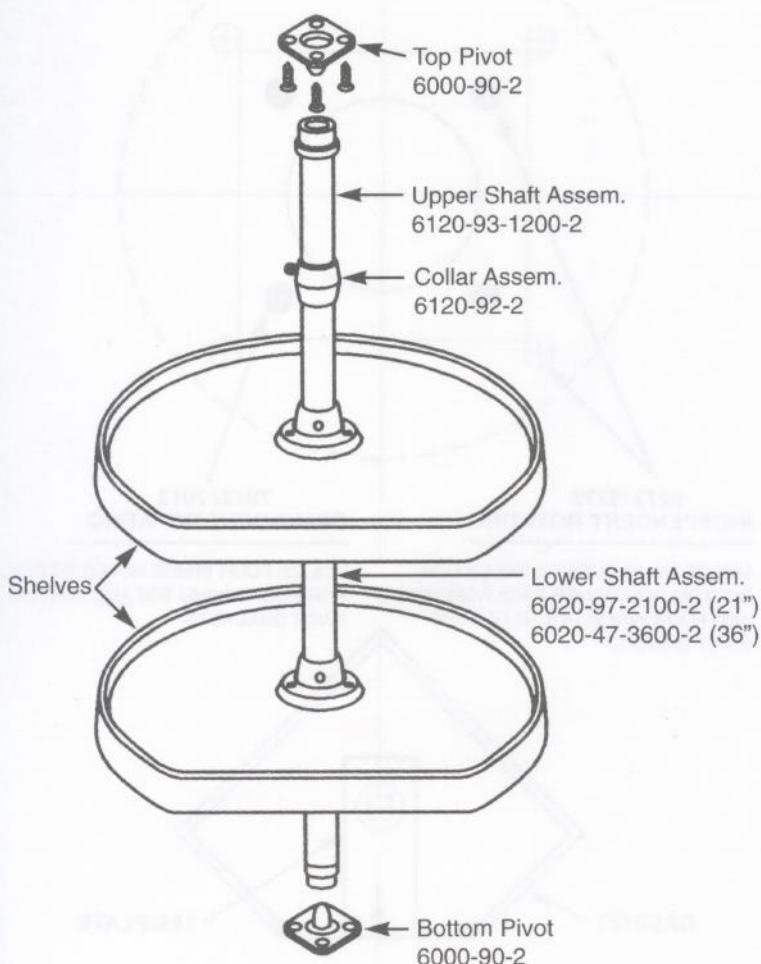
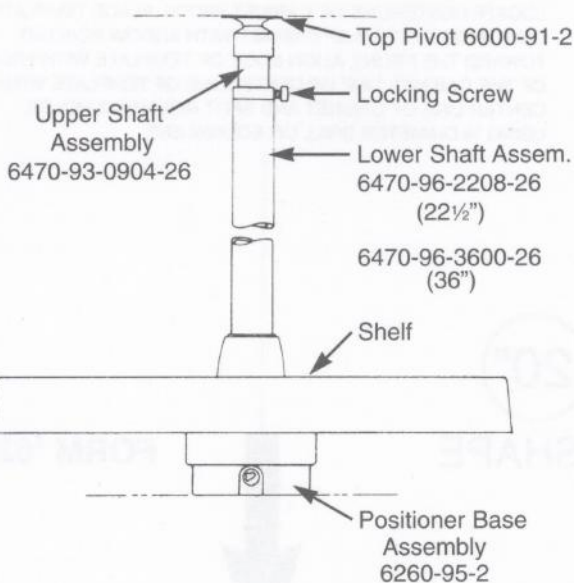
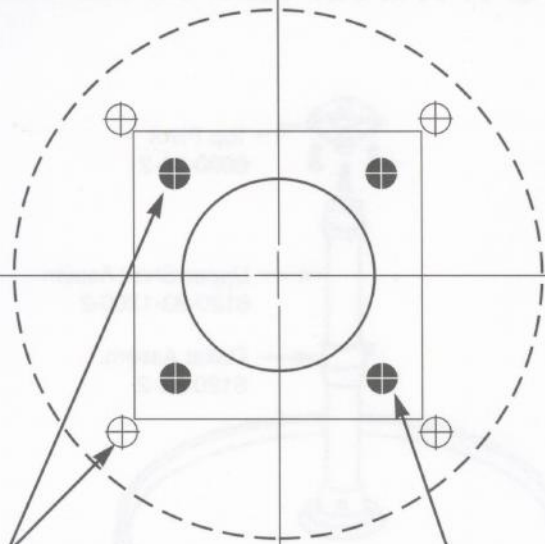


DEPENDENTLY ROTATING HARDWARE



INDEPENDENTLY ROTATING HARDWARE



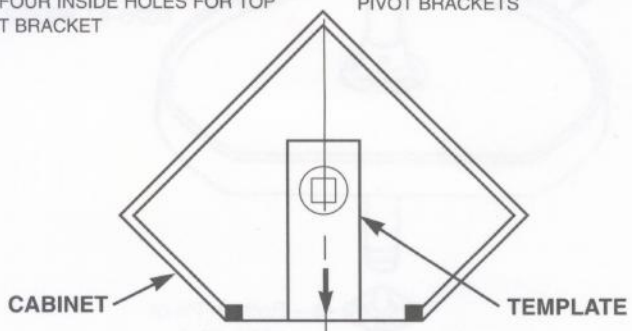


**6272/6273
INDEPENDENT ROTATING**

UTILIZE FOUR OUTSIDE HOLES FOR BOTTOM POSITIONER BASE ASSEMBLY AND FOUR INSIDE HOLES FOR TOP PIVOT BRACKET

**7012/7013
DEPENDENT ROTATING**

UTILIZE FOUR INSIDE HOLES TO DRILL FOR POSITIONING TOP AND BOTTOM PIVOT BRACKETS



**CABINET
CENTERLINE**

LOCATE ON CENTERLINE OF CABINET ALONG FRONT OPENING
REV•A•SHELF 20" D-SHAPE POLYMER TRAY SET TEMPLATE

LOCATE CENTERLINE OF CABINET WIDTH. PLACE TEMPLATE ON TOP OR BOTTOM OF CABINET WITH ARROW POINTED TOWARD THE FRONT. ALIGN EDGE OF TEMPLATE WITH FRONT OF THE CABINET. LINE UP CENTERLINE OF TEMPLATE WITH CENTER LINE OF CABINET AND SPOT MOUNTING HOLES, USING 1/8 DIAMETER DRILL OR EQUIVALENT.

20"

D-SHAPE

FORM #6272-20



FRONT OF CABINET