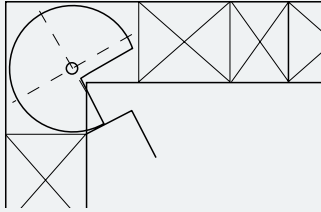
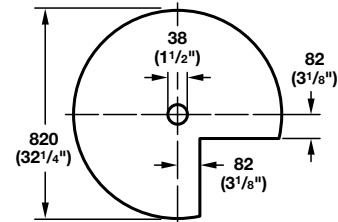
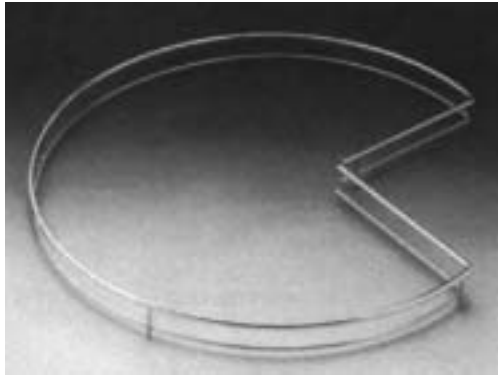


at



Revolving Corner Unit Systems



Wire Surround Fence

for screw mounting to three-quarter round, customer-supplied wood shelf
For 900 x 900 mm (36 x 36") corner units
Diameter: 810 mm (31 7/8")
Height: 62 mm (2 1/2")
Finish: steel, chrome-plated

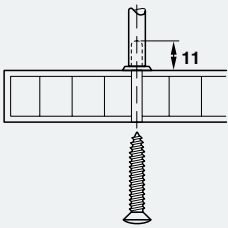
Cat. No. 541.02.233

Packing: 1 pc.

Cutout and hole for wood shelf

5

Kitchen Accessory Systems



Wire fences are secured to wood shelves with **raised head screws**
Size: Ø 4.2 x 32 mm
Finish: steel, galvanized

Cat. No. 023.27.460

Packing: 100 pcs.



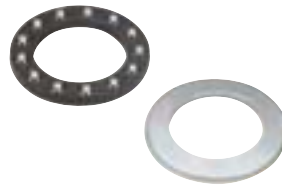
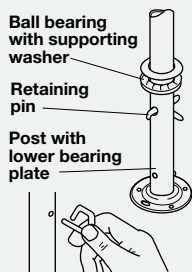
Shelf support for mounting to post 541.17.234.

Supports three-quarter round, revolving wood shelf, complete with bearing and retaining pin.

Finish: steel, epoxy-coated white
Bearing: plastic, white

Cat. No. 541.02.720

Packing: 1 pc.



Ball bearing with support washer for installation on Post 541.17.234

Cat. No. 541.56.919

Packing: 1 pc.

Dimensional data not binding.
We reserve the right to alter specifications without notice.

5.18 TCH 02

Dimensions in mm
Inches are approximate