



18" Set Installation Guide for Wood or Metal Studs

A note from pegRAIL™ . . .

Guys - you probably won't read the instructions below, but we hope you do.

Girls - you are probably smart enough to know how to do this without the instructions, but you'll read them to make sure.

The instructions below will make installation & assembly as simple as possible. We recommend reading these instructions BEFORE beginning installation. Becoming familiar with all the components will also make your installation quick & easy.

Tools Required:

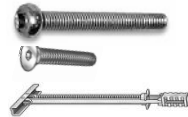
- Drill & Phillips Driver
- 7/32" Drill Bit for pilot holes (for wood studs)
- 1/2" Drill Bit (for metal studs)
- Tape Measure
- Level
- Rubber Mallet

Wood Stud Hardware included:



- (4) #14 x 2 1/4" Pan Head Wood Screw for Mounting plate to wood studs
- (2) #10 x 1-3/4" Flat Head Wood Screw for RAIL to mounting plate in wood studs

Metal Stud Hardware included



- (4) 1/4"x20 x 1 1/2" Machine Screw for Mounting Plate to metal studs
- (2) #10-24 x 3/4" Machine Screw for RAIL to mounting plate in metal studs (incl. hex driver)
- (4) 1/4"x20 Snap Toggle Anchors for metal studs

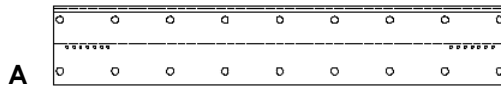
WARNING:

It is important that pegRAIL™ mounting plates & RAILS be installed properly per the instructions below. If the system is incorrectly installed or assembled it could become unstable or collapse, possibly causing damage or injury.

Mounting the RAIL into Wood Studs

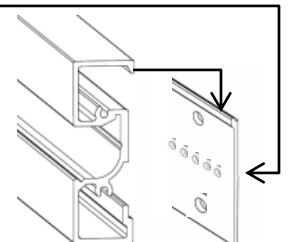
The mounting plate & RAIL must be mounted into the solid wood of wall studs or directly into metal studs. An 18" RAIL must hit 2 wall studs (standard stud spacing is 16" from center to center). It is unsafe to mount the RAIL in any other manner. If you are unsure how to install the mounting plate & RAIL please consult a qualified carpenter or handyperson.

1. Measure for RAIL height & desired placement. Use mounting plate as your template .
2. **IMPORTANT -Make sure the mounting plate is level before drilling pilot holes. If the RAIL is not level the system will not function properly.**
3. Using the top & bottom predrilled holes in the Mounting Plate, locate studs and drill top & bottom pilot holes using 7/32" bit. (see drawing A)



Mounting Plates are predrilled every 2" for side to side adjustment to align with studs. The top of the mounting plate has the extended lip to hold the RAIL.

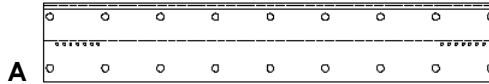
4. Anchor the mounting plate to the wall using the #14 wood screws provided. Do not over tighten as mounting plate can bend preventing RAIL from fitting over the lip firmly.
5. Drop the RAIL over the top of the mounting plate lip & adjust left or right to desired position. (see drawing B) Using rubber mallet, tap RAIL firmly into place on mounting plate.
5. Align predrilled hole in RAIL with the closest center hole in the mounting plate.
6. Anchor RAIL to mounting plate using the #10 wood screws provided. RAIL holes are drilled to allow #10 screw heads to be flush with the inside face of the RAIL channel.



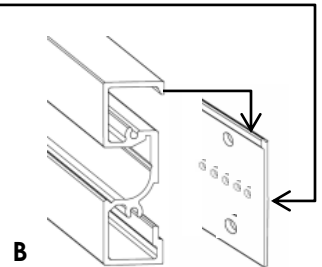
Mounting the RAIL into Wood Studs

The mounting plate & RAIL must be mounted into the solid wood of wall studs or directly into metal studs. An 18" RAIL must hit 2 walls studs (standard stud spacing is 16" from center to center). It is unsafe to mount the RAIL in any other manner. If you are unsure how to install the mounting plate & RAIL please consult a qualified carpenter or handyman.

1. Measure for RAIL height & desired placement. Use the mounting plate as your template.
IMPORTANT - Make sure the mounting plate is level before drilling pilot holes. If the RAIL is not level the system will not function properly.
2. Locate metal studs & align a set of top & bottom holes over each stud. Mark the top & bottom predrilled holes on the wall for each stud.
(see drawing A)



3. Drill 1/2" dia. holes through the wall & through metal studs
4. Insert the Snap Toggle metal anchors through the studs and open metal anchor using the adjustable straps. Anchor is fully open when ends of straps are even.
5. Holding the straps taut, push the grommet towards the wall until tight against wall surface.
6. After the grommet is secure to the wall, break off the plastic straps of the Snap Toggle as close to the grommet as possible
7. Anchor the mounting plate to the anchors using the 1/4 x20 machine screws provided. Do not over tighten as mounting plate can bend preventing RAIL from fitting firmly over the lip.
8. Drop the RAIL over the top of the mounting plate lip & adjust left or right to desired position. (see drawing B)
Using rubber mallet, tap RAIL firmly into place on mounting plate.
9. Align predrilled hole in RAIL with the closest center hole in the mounting plate.
10. Anchor RAIL to mounting plate using the 10x24 x 3/4" machine screws with the hex driver provided. RAIL holes are predrilled to allow screw heads to be flush with the inside face of RAIL channel.



pegRAIL™ Assembly Tips

Each boxed set has detailed assembly instructions packed inside, but here are a few general tips...

Wood Shelves

Attach all wood Shelf Support Brackets to bottom of wood shelves before assembling your set. See separate instruction page packed with wood shelves.

Wood Top Shelf Set

Attach the 4 bracket screws to bottom of wood top shelf before assembling your set. Top Shelf Bracket screws are packed WITH the Top Shelf Brackets. See separate instruction page packed with wood top shelf.

Wire Shelves

Place Shelf Frame into desired location

For easy (and safe) assembly, use the wire shelf frame to determine your final placement before dropping in the wire grate.

Outrigger Sleeves for Shelves, Wine Racks & Hangbars

It is usually easiest to begin assembling from the bottom of the Outriggers and working your way upward to achieve desired spacing between components. Count the grooves on the back of the Outriggers to insure the left & right sleeves are even.