

Table Legs - Tapered

HÄFELE

at

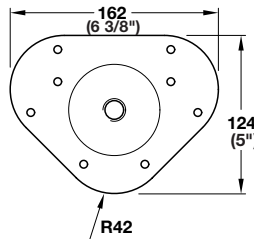
cabinet accessories
UNLIMITED



Tapered table leg, with adjustable foot.
Screw mounts to underside of table tops.
Adjustable range: +10 mm
Finish: Leg: tubular steel
Adjustment foot: plastic, black
Mounting plate: steel

Height	Diameter	Finish of leg	Cat. No.
710 mm (28")	38 mm (1 1/2")	chrome polished	635.40.271
		nickel matt	635.40.671

Packing: 1 set (4 pcs.)



- Leg tapers from:
38 mm (1 1/2") to 19 mm (3/4")

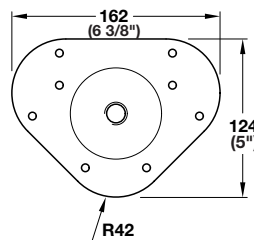
- Static load rating approximately
100 kg (220 lbs.) per leg.



Tapered table leg, with adjustable foot.
Screw mounts to underside of table tops.
Adjustable range: +20 mm
Finish: Leg: tubular steel
Adjustment foot: plastic, black
Mounting plate: steel

Height	Diameter	Finish of leg	Cat. No.
710 mm (28")	60 mm (2 3/8")	chrome polished	635.41.271
		nickel matt	635.41.671
		black matt epoxy	635.41.371

Packing: 1 set (4 pcs.)



- Ball joint foot adjusts for
uneven floors.
- Leg tapers from:
60 mm (2 3/8") to 32 mm (1 1/4")

**Tables, Legs, Casters,
Levelers and Office
Organization**