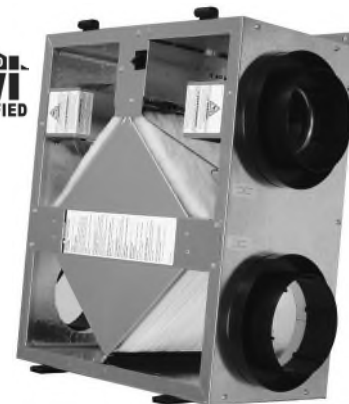




MODEL TR90G

(Energy Recovery Ventilators -ERV)



Specifications

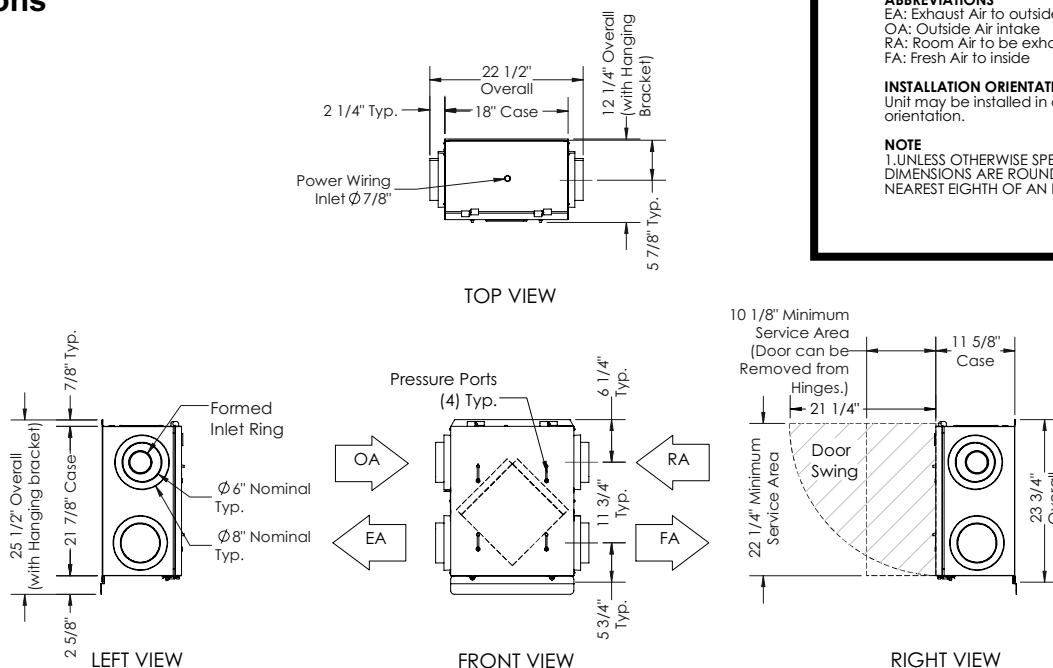
Ventilation Type: Static Plate, Heat and Humidity Transfer				
Typical Airflow Range: 40-110 CFM				
Galvanized Case, Line Voltage, No Line Cord				
Unit may be mounted in any orientation and in heated or unheated locations				
Number Motors: Two, 0.03 HP each, totally enclosed, thermally protected				
V	Hz	Phase	Input Watts	FLA
120	60	Single	46 @ 90 CFM	0.35
Control Voltage: 24 VAC				
Filters: MERV 8, spun polyester media. 9 5/8" x 10 1/2" x 1"				
Weight: 36 lbs (unit), 40 lbs (in carton)				
Shipping Dimensions: 29" L x 22" W x 15" H				

Core Performance

Airflow CFM	ESP in H ₂ O	Temp EFF%	Total EFF% Winter*	Total EFF% Summer*
40	0.60	84	74	56
58	0.50	80	69	50
73	0.40	77	65	46
85	0.30	74	62	43
98	0.20	71	59	39
113	0.10	68	56	34

* Contact Factory for HVI certification report for complete certified rating.

Dimensions



ABBREVIATIONS
 EA: Exhaust Air to outside
 OA: Outside Air intake
 RA: Room Air to be exhausted
 FA: Fresh Air to inside

INSTALLATION ORIENTATION
 Unit may be installed in any orientation.

NOTE
 1. UNLESS OTHERWISE SPECIFIED, DIMENSIONS ARE ROUNDED TO THE NEAREST EIGHTH OF AN INCH.