



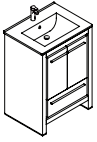
# **FVN8125**

# ALLIER

## **INSTALLATION GUIDE**

### CONTENTS:

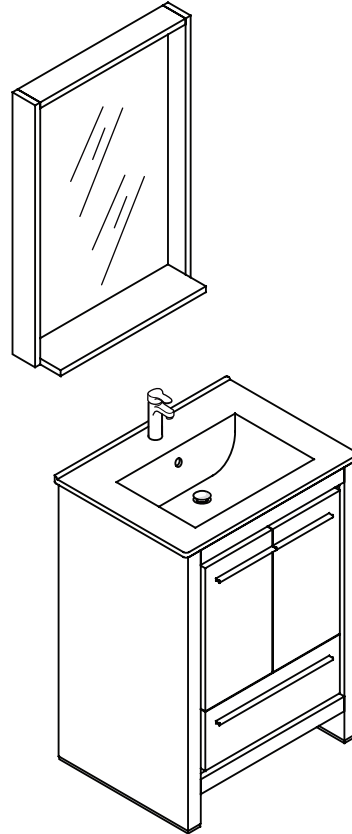
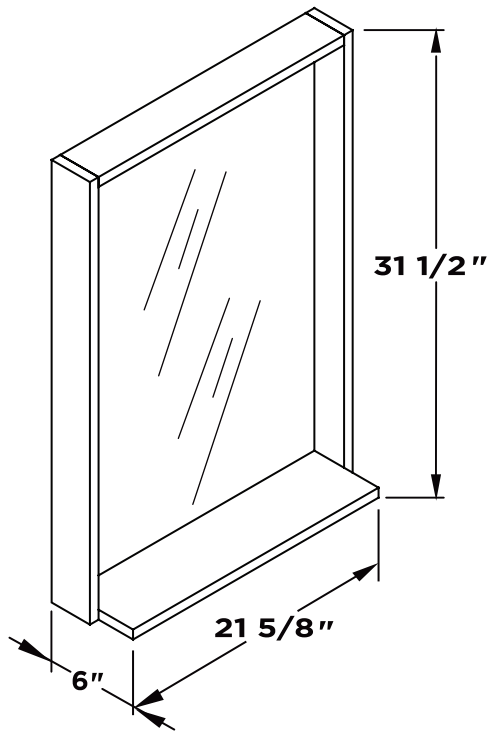
Cabinet .....	(FCB8125) .....	PAGE <b>3</b>
Sink .....	(FVS8125) .....	PAGE <b>3</b>
Mirror .....	(FMR8125) .....	PAGE <b>2</b>



# FVN8125 ALLIER INSTALLATION GUIDE

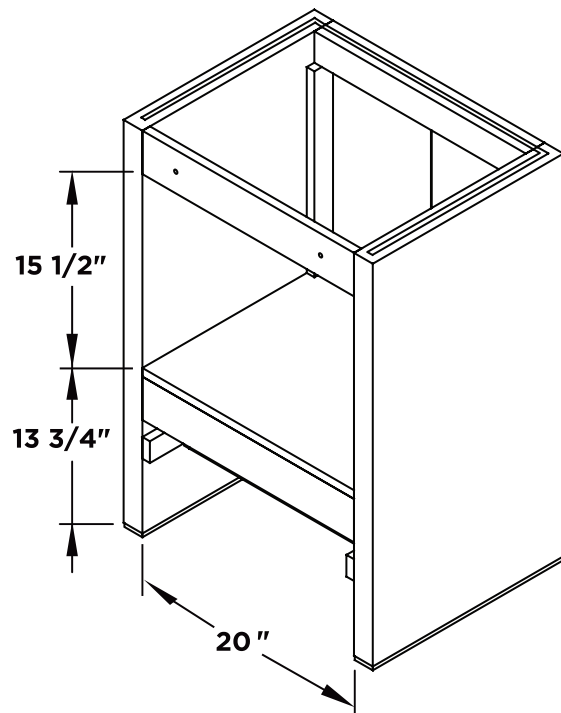
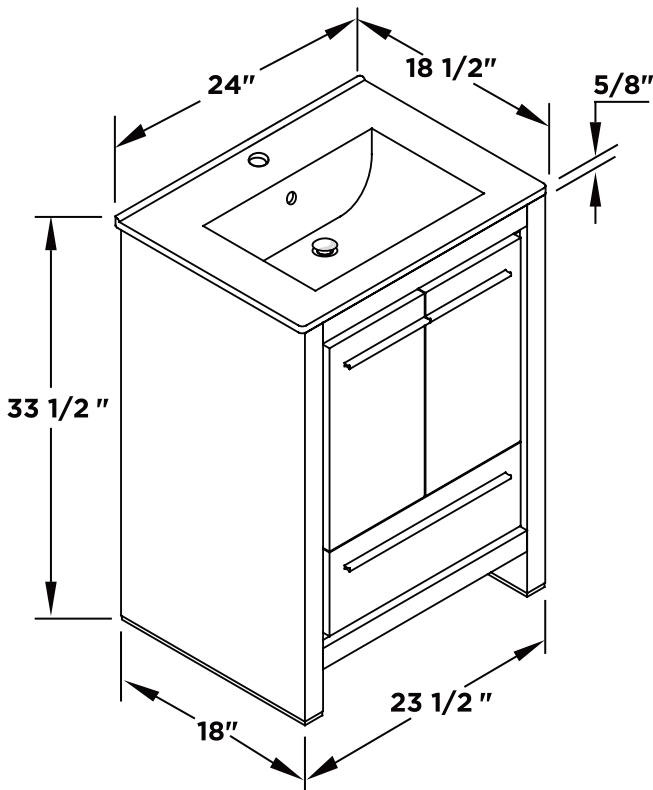


Mirror



Vanity Front

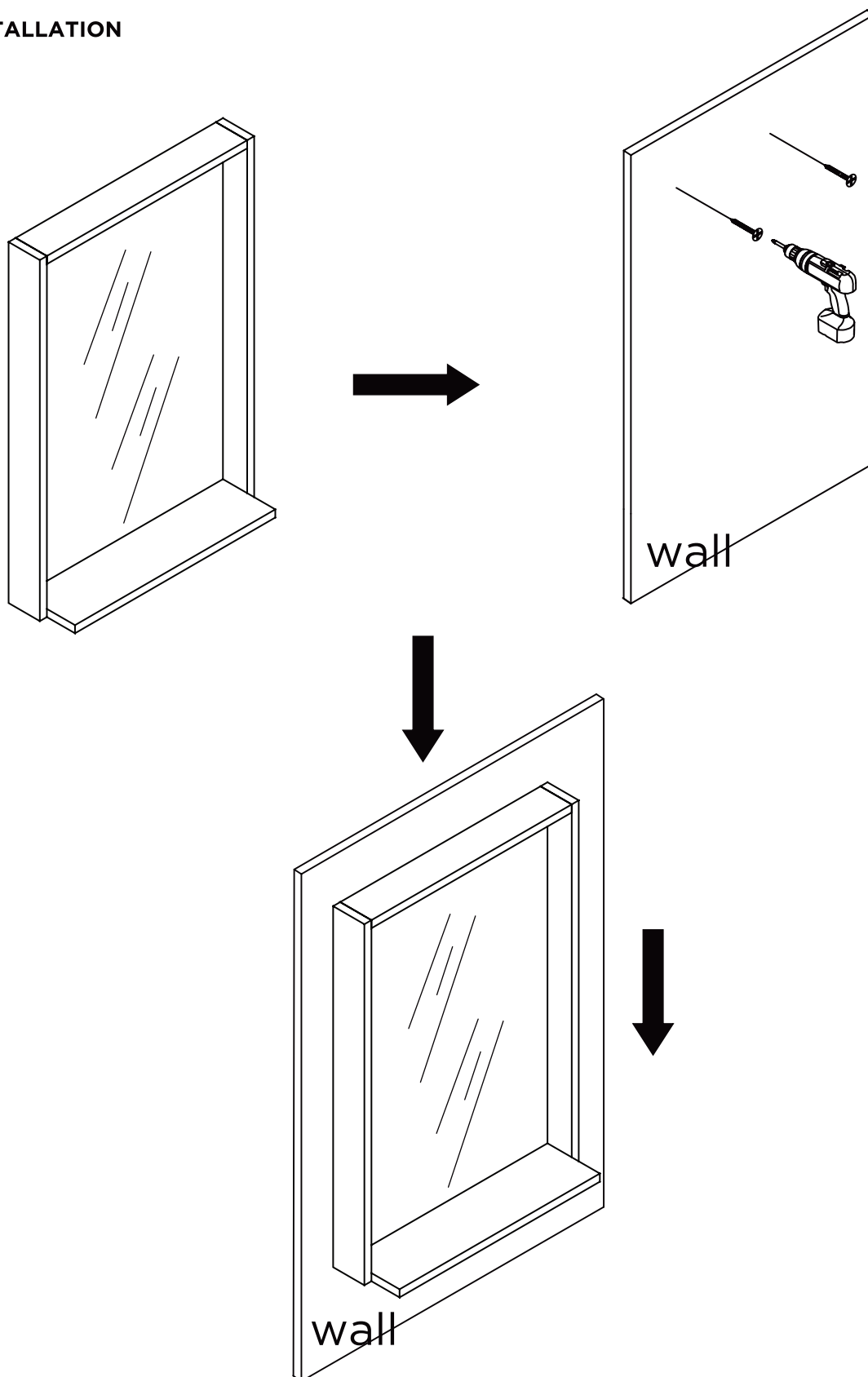
Vanity Back



## TOOLS FOR ASSEMBLY

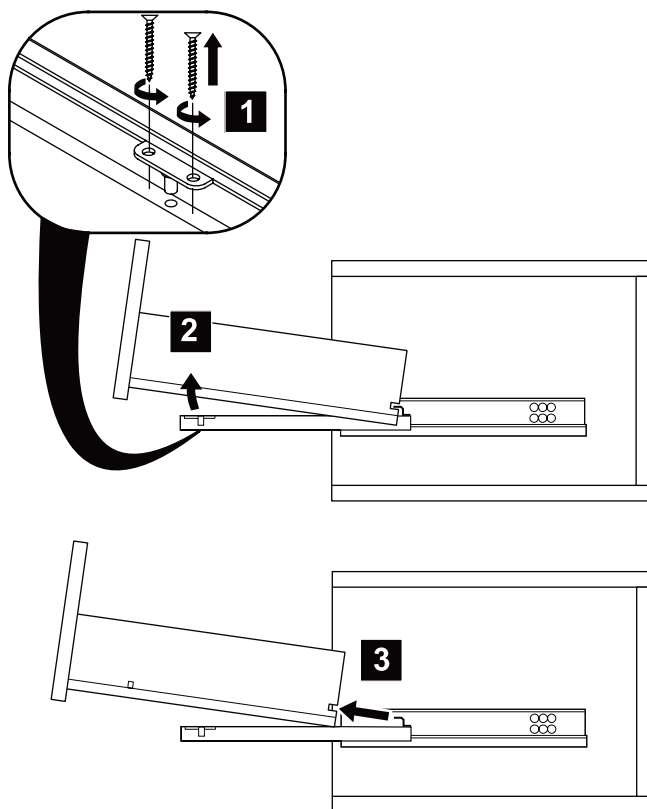


## MIRROR INSTALLATION

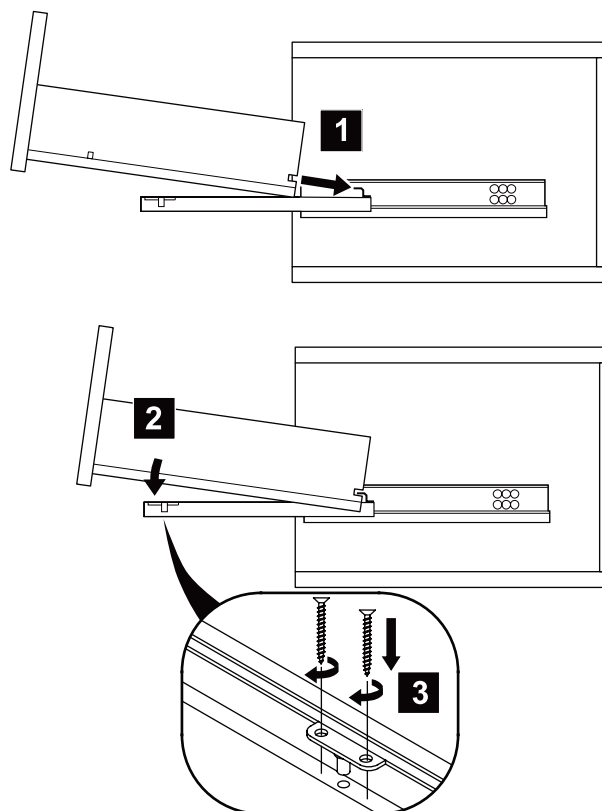


# DRAWER REMOVAL & INSTALLATION

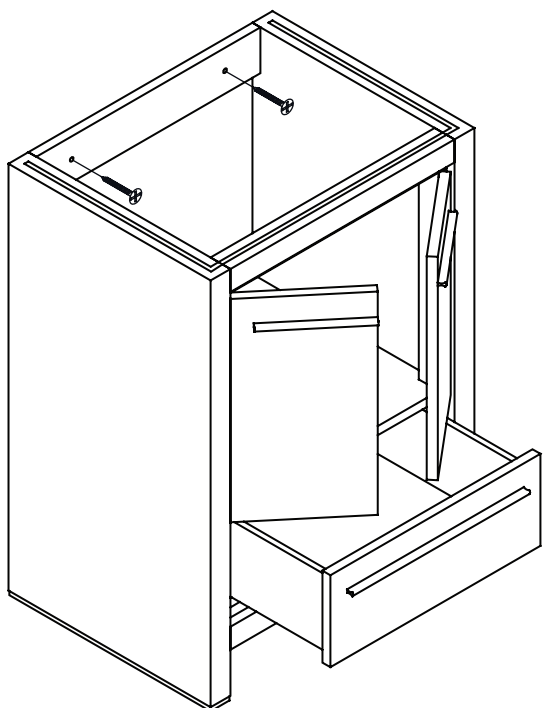
## REMOVAL



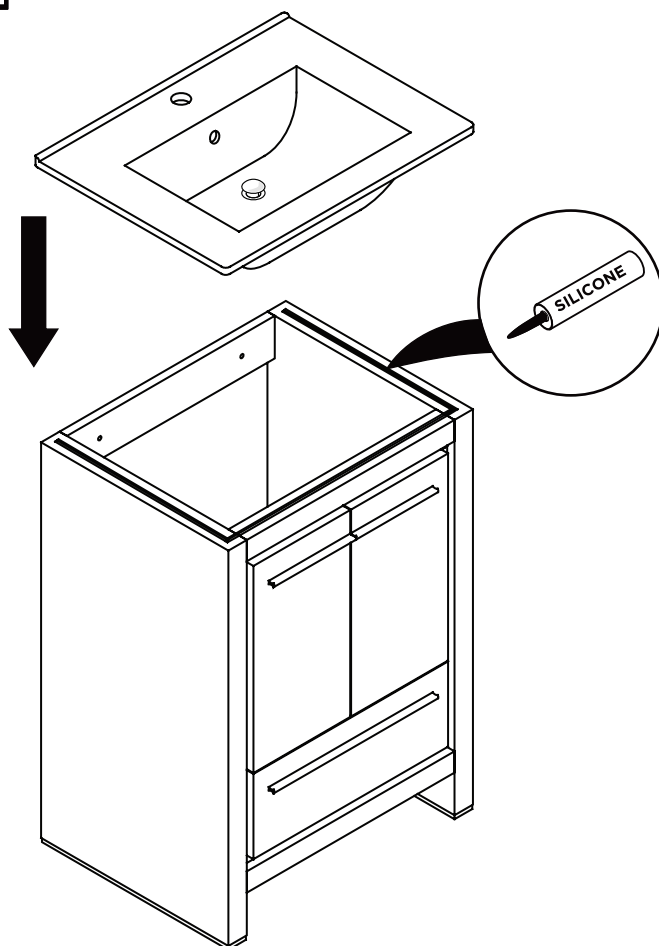
## INSTALLATION

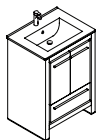


- 1** Remove drawer and open the door
- IMPORTANT:** Consult an expert for the proper screws/bolts to use when attaching to various wall constructions. Screws provided do not attach to all wall construction types.

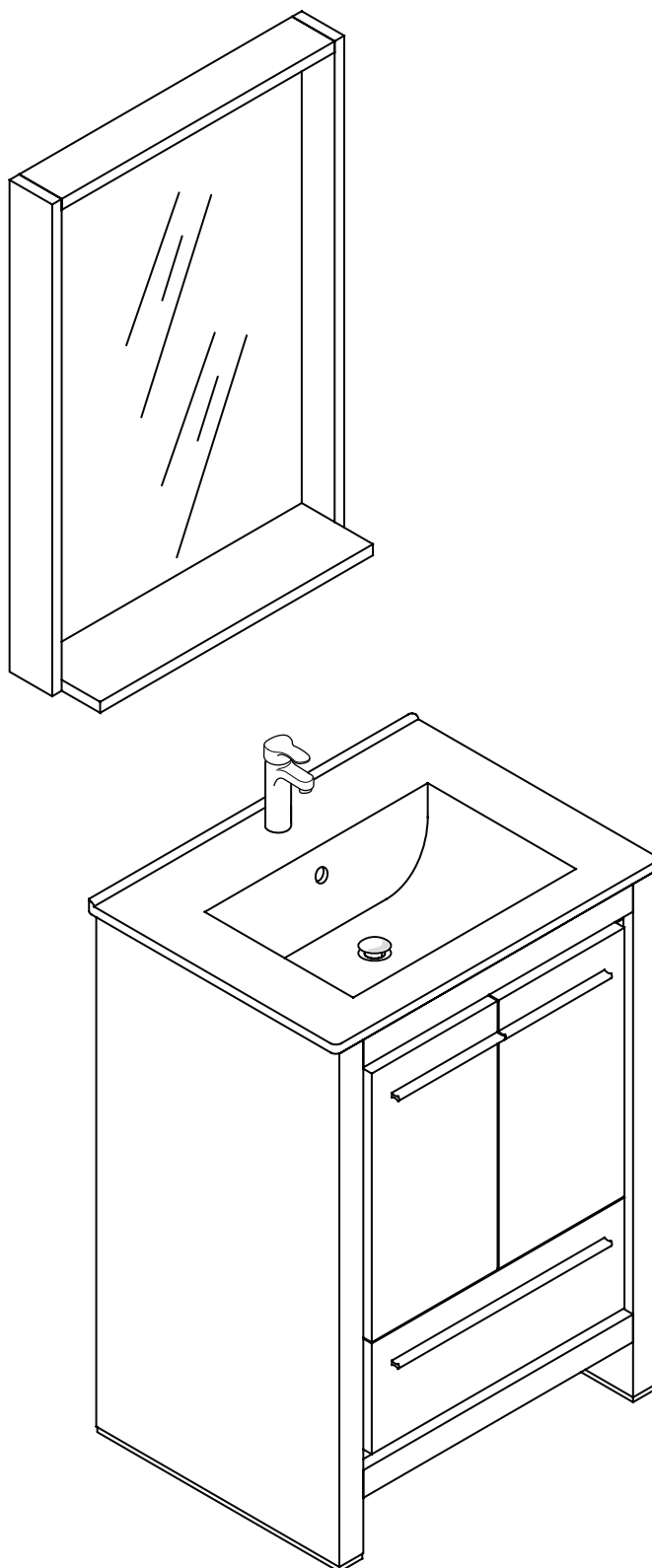


- 2** Install top panel



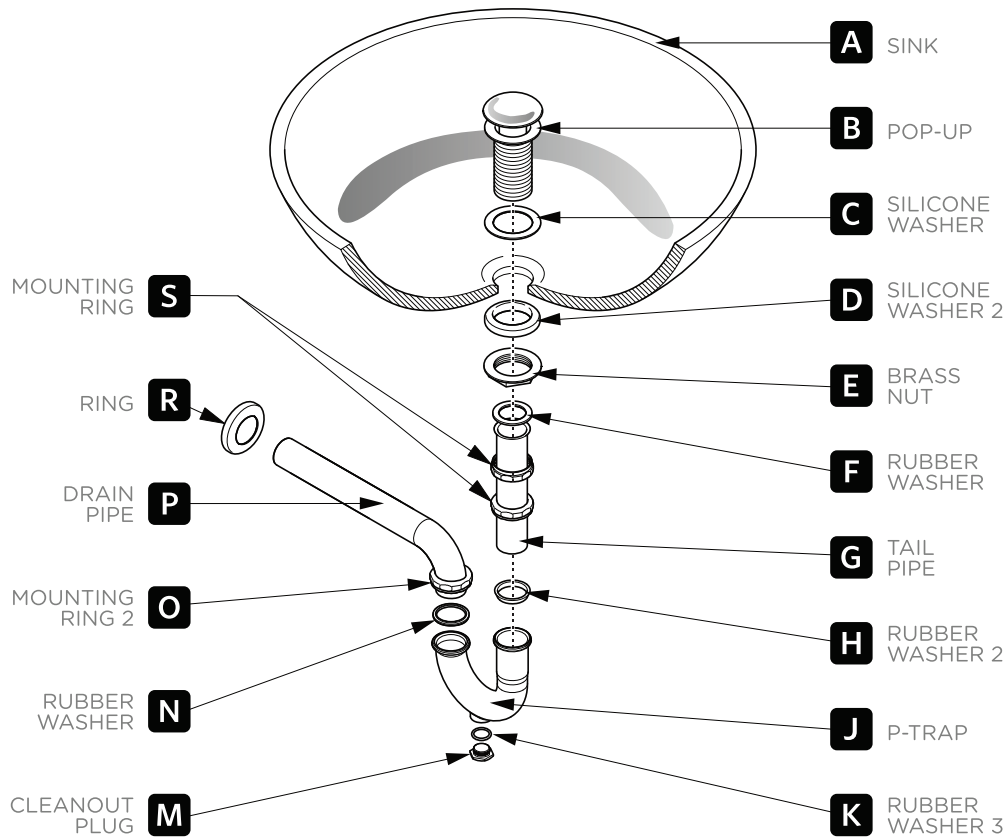


# **FVN8125** **ALLIER** **INSTALLATION GUIDE**



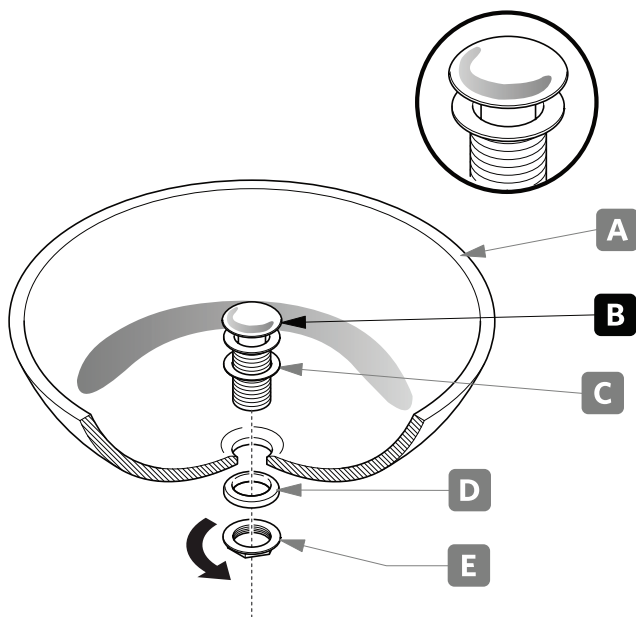
# P-TRAP & POP-UP INSTALLATION INSTRUCTIONS

Your item may appear slightly different from the illustration.



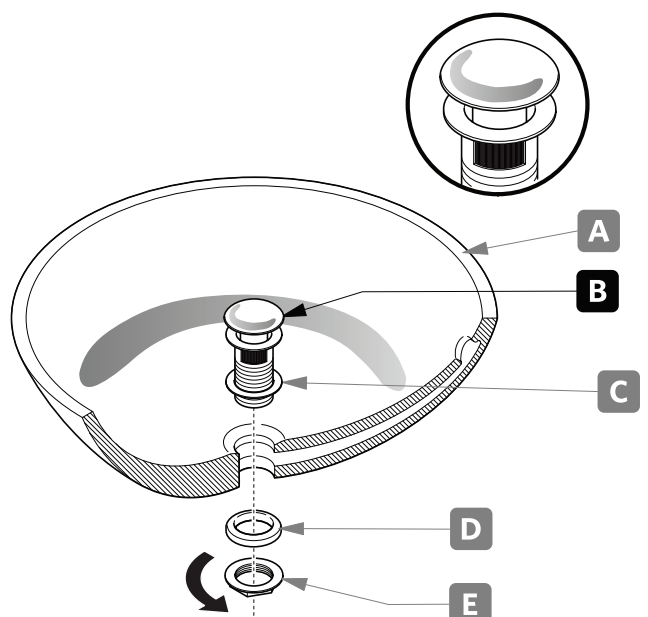
## POP-UP INSTALLATION

### FOR SINKS WITHOUT OVERFLOW



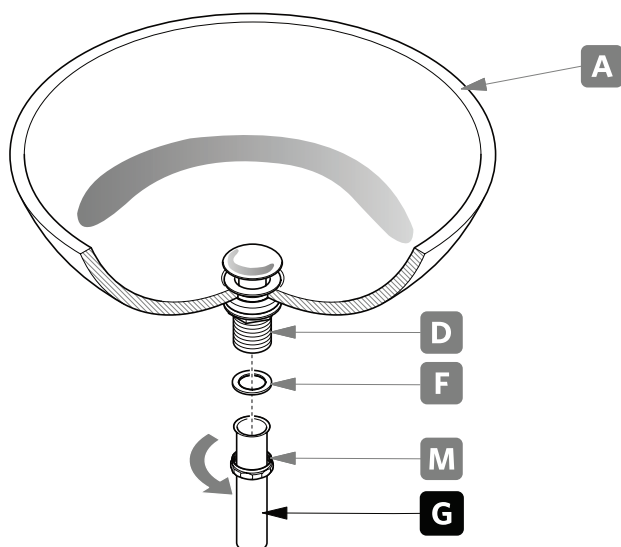
OR

### FOR SINKS WITH OVERFLOW



# P-TRAP INSTALLATION

1. Install tail pipe **(G)**.



2. Install P-trap **(J)**.

