



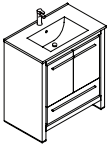
# **FVN8130**

# ALLIER

## **INSTALLATION GUIDE**

### CONTENTS:

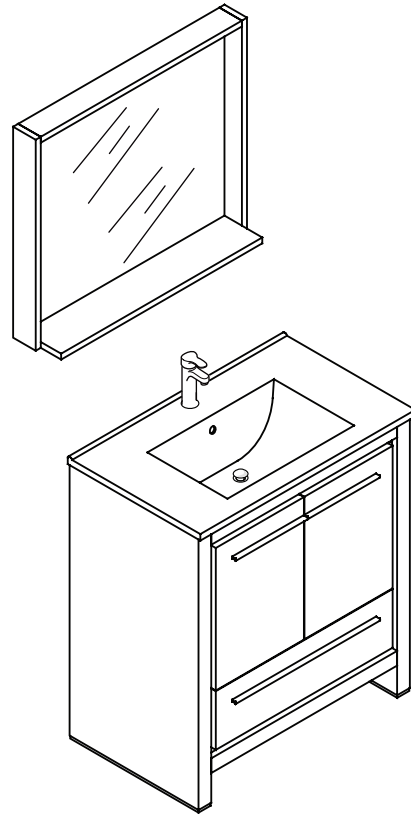
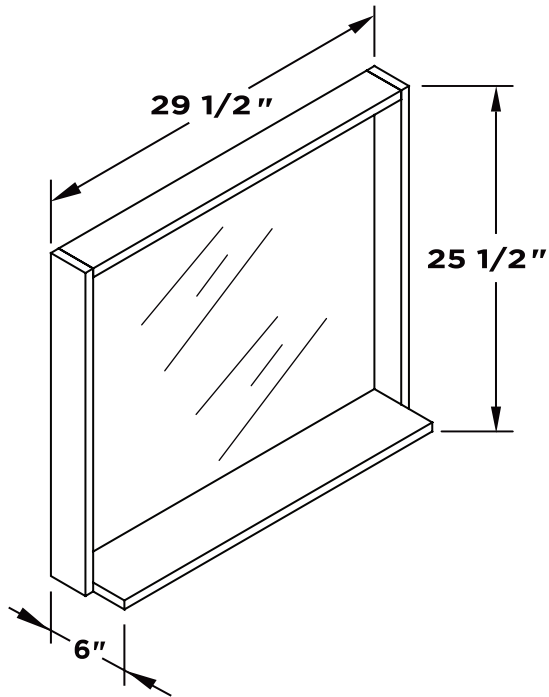
Cabinet .....	(FCB8130) .....	PAGE <b>3</b>
Sink .....	(FVS8130) .....	PAGE <b>3</b>
Mirror .....	(FMR8130) .....	PAGE <b>2</b>



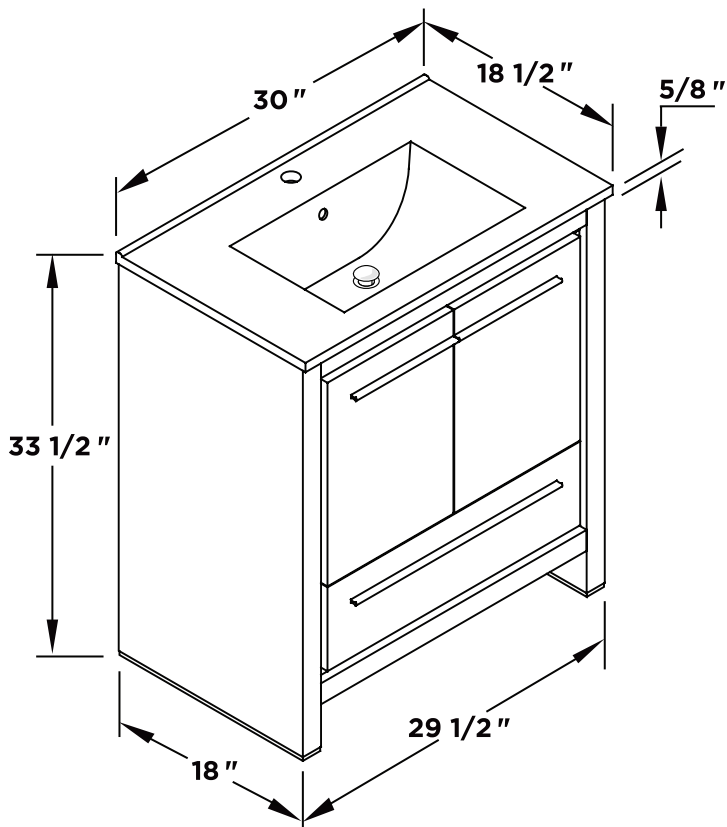
# FVN8130 ALLIER INSTALLATION GUIDE



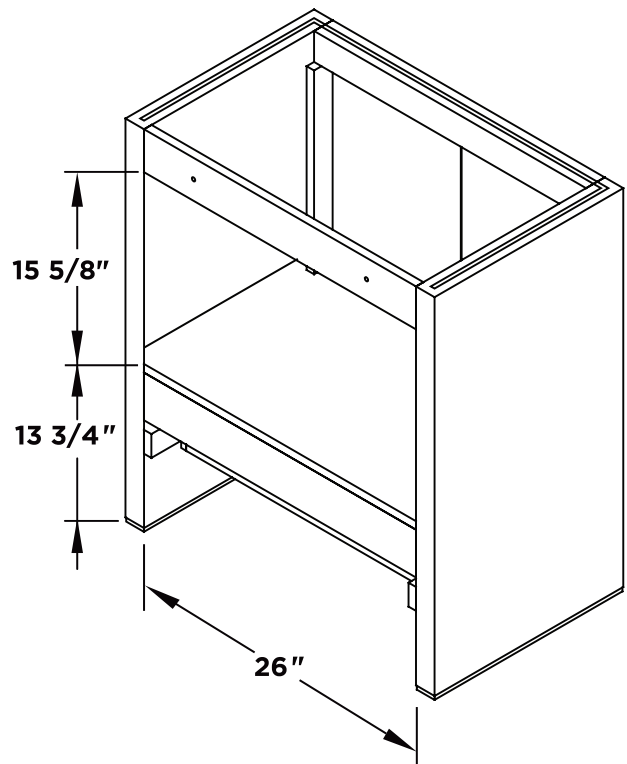
Mirror



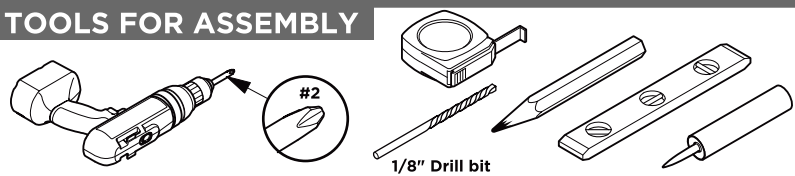
Vanity Front



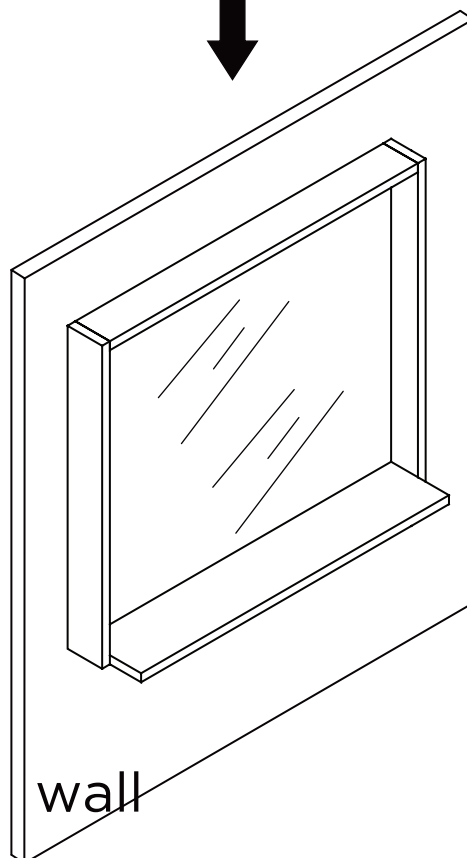
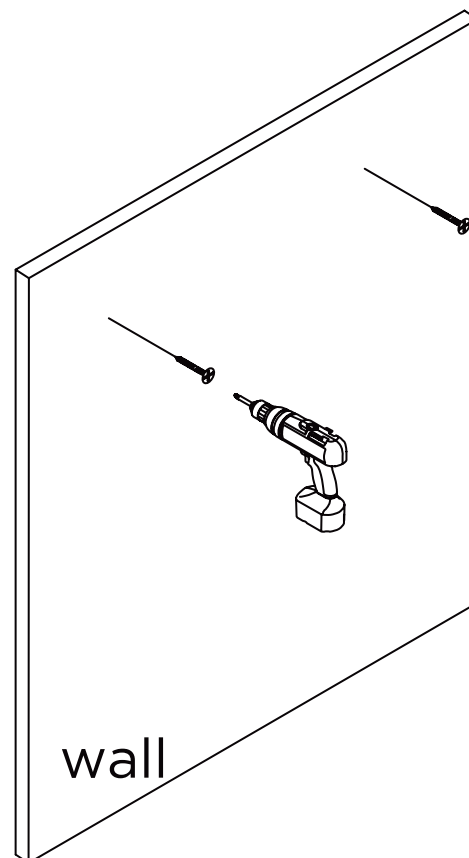
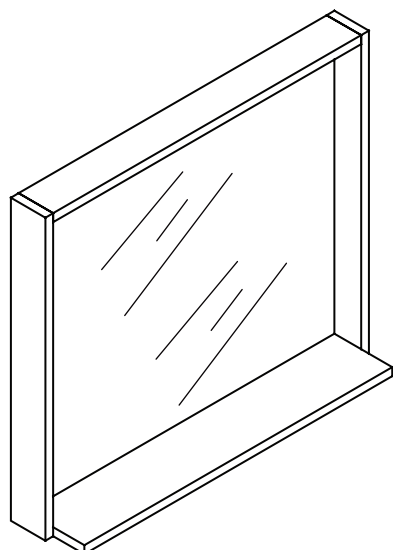
Vanity Back



## TOOLS FOR ASSEMBLY

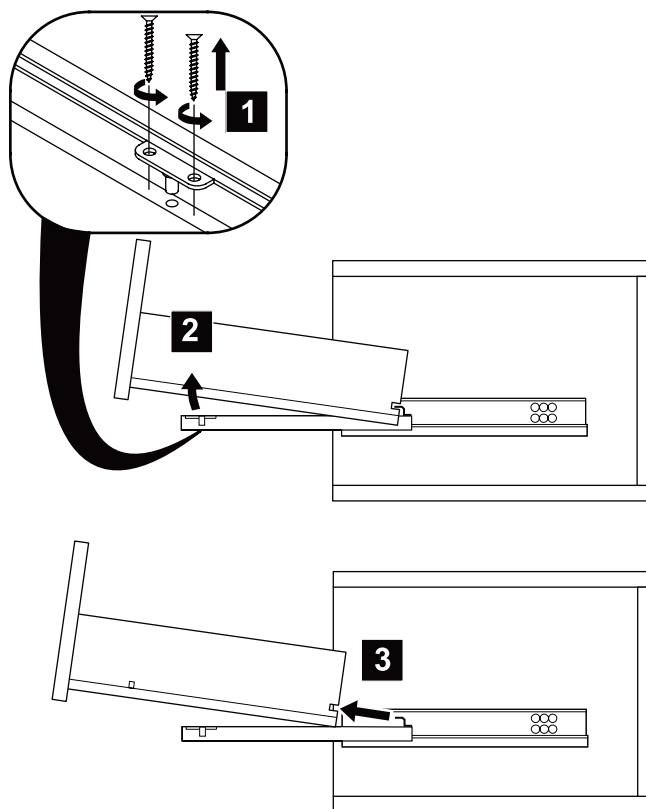


## MIRROR INSTALLATION

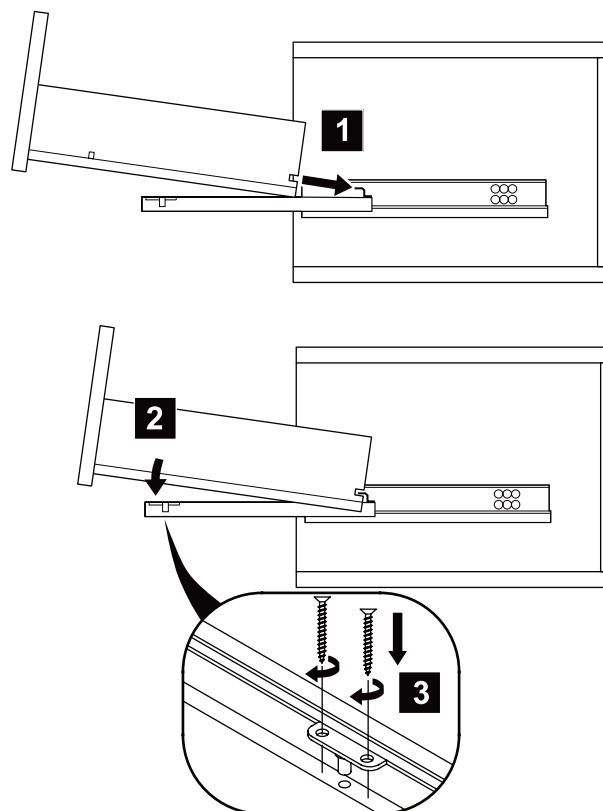


## DRAWER REMOVAL & INSTALLATION

### REMOVAL



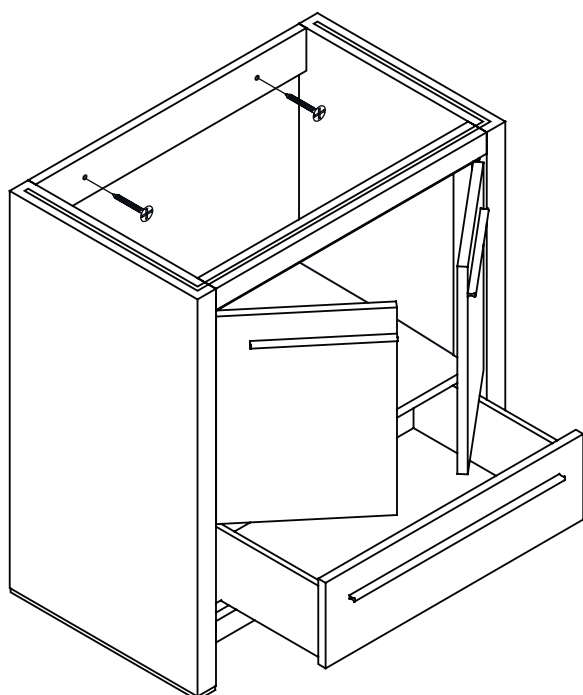
### INSTALLATION



1

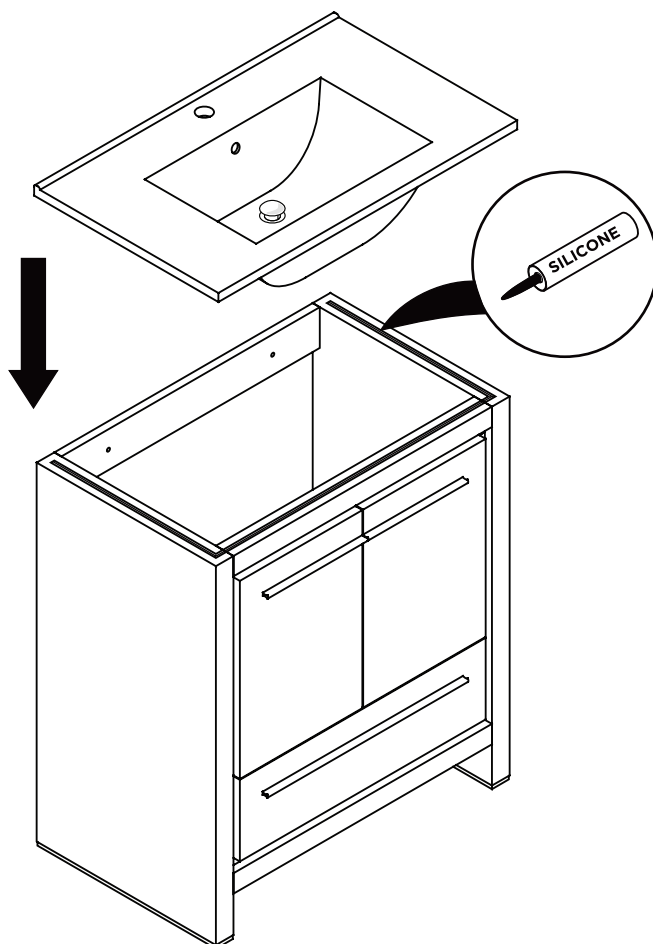
Remove drawer and open the door

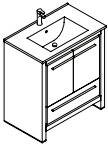
**IMPORTANT:** Consult an expert for the proper screws/bolts to use when attaching to various wall constructions. Screws provided do not attach to all wall construction types.



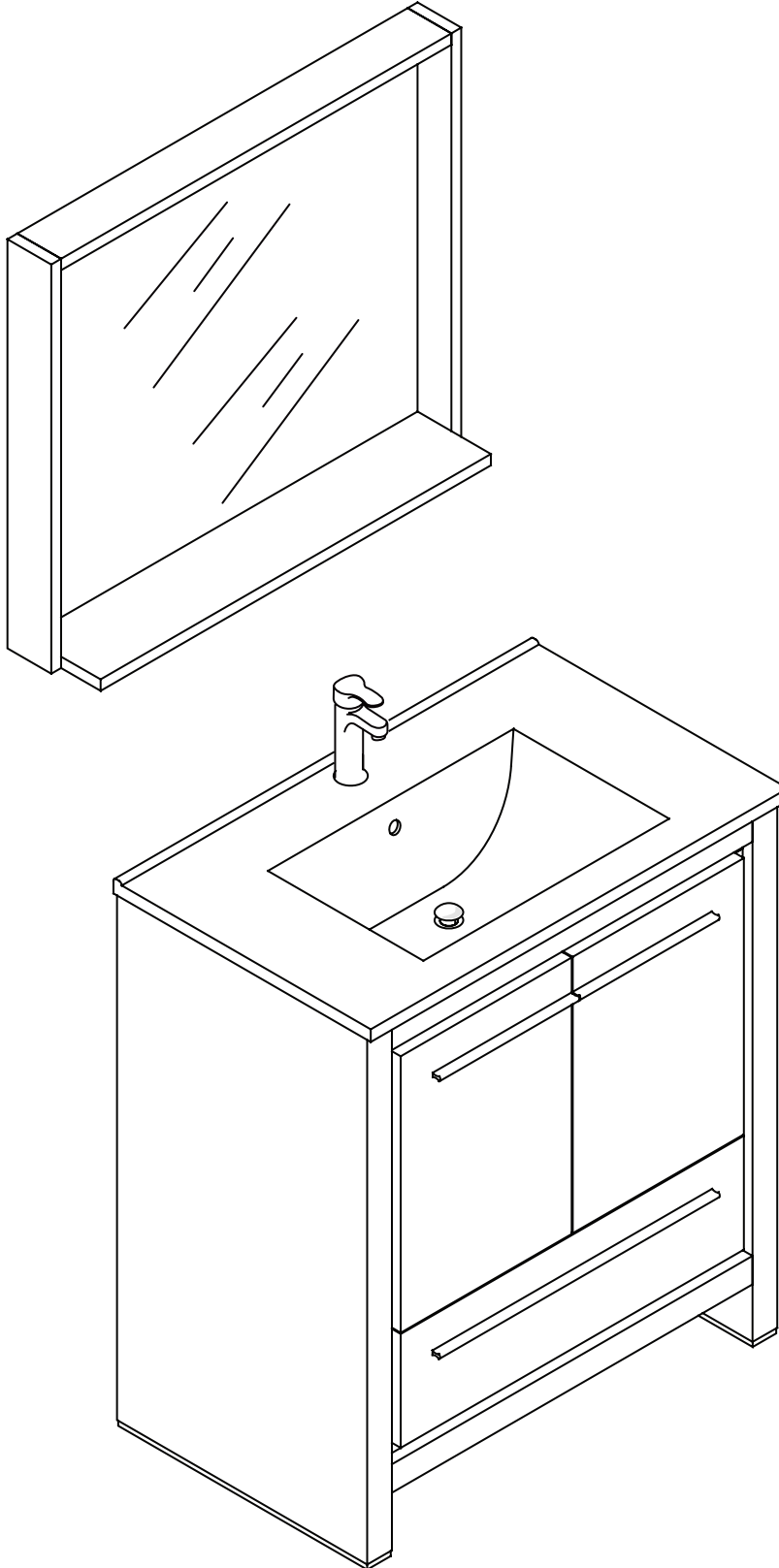
2

Install top panel





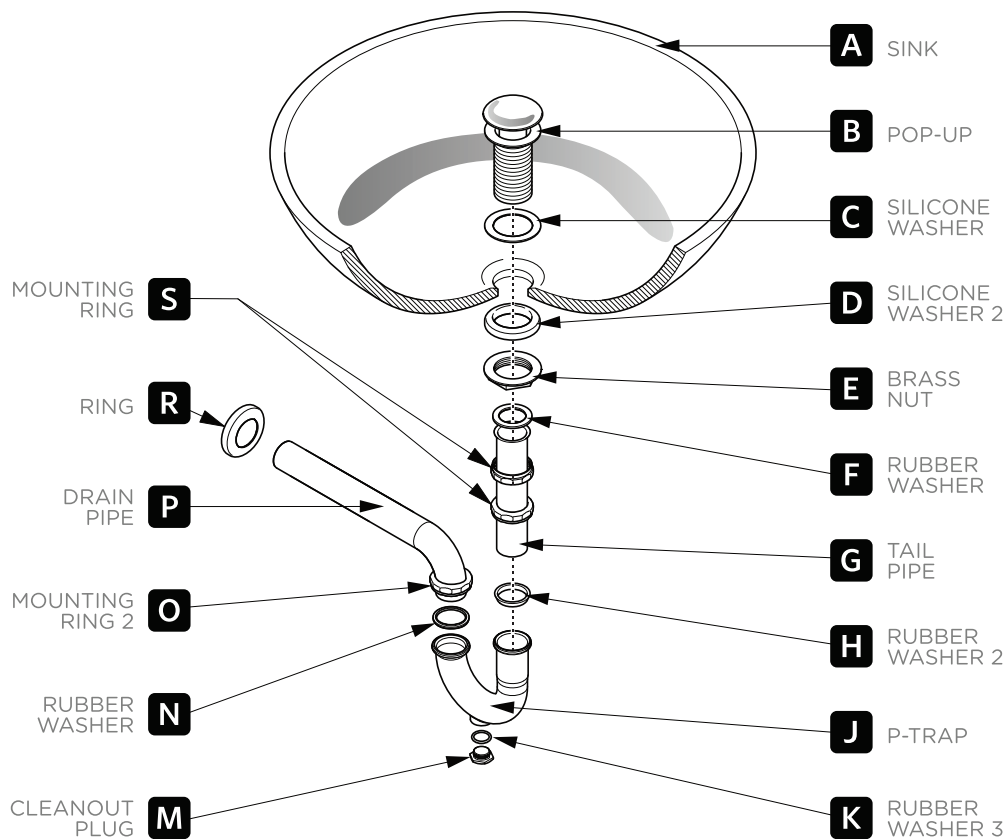
# **FVN8130** **ALLIER** **INSTALLATION GUIDE**



## P-TRAP & POP-UP

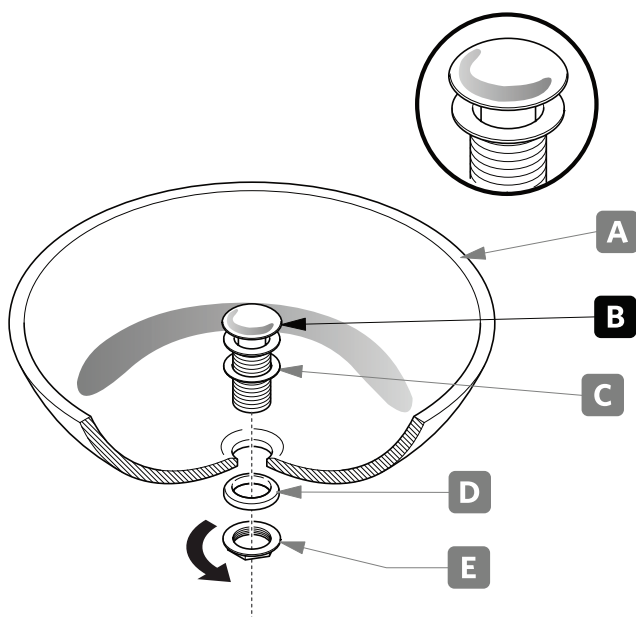
### INSTALLATION INSTRUCTIONS

Your item may appear slightly different from the illustration.



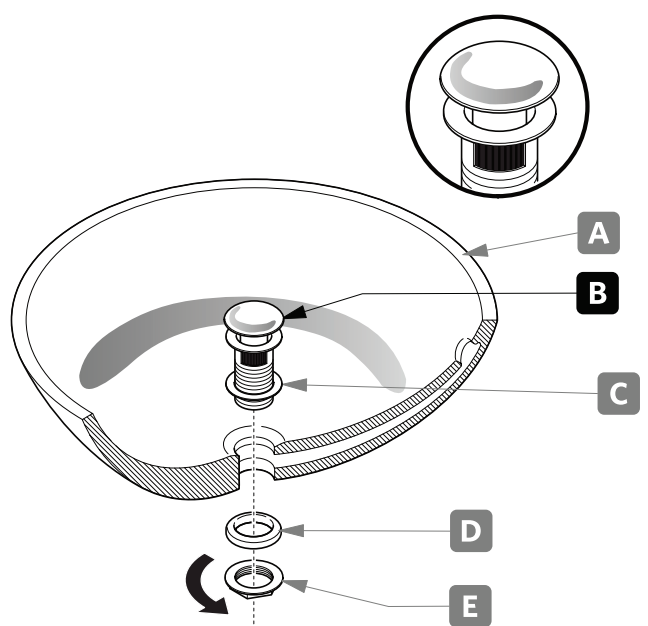
### POP-UP INSTALLATION

#### FOR SINKS WITHOUT OVERFLOW



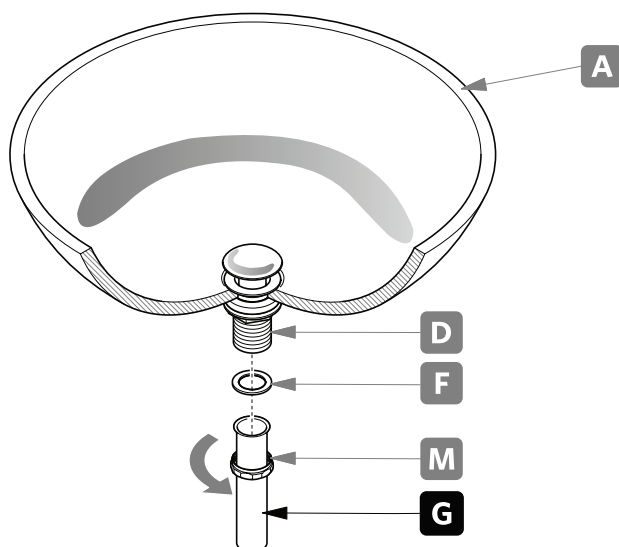
OR

#### FOR SINKS WITH OVERFLOW



# P-TRAP INSTALLATION

1. Install tail pipe **(G)**.



2. Install P-trap **(J)**.

