

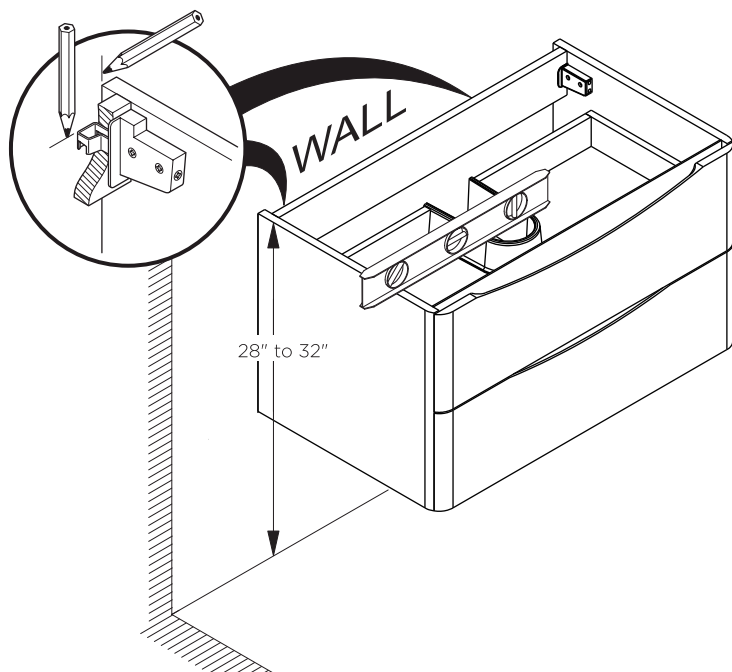
FVN9032 SENZA INSTALLATION GUIDE

|||kitchensource.com
1.800.667.8721

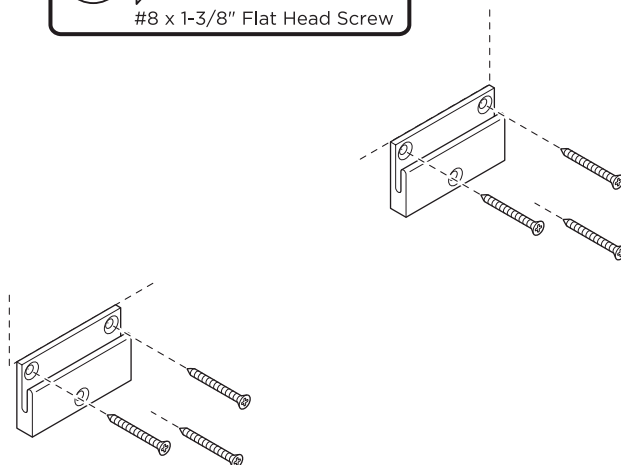
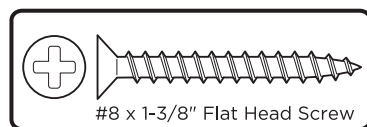
FRESCA®

CABINET INSTALLATION

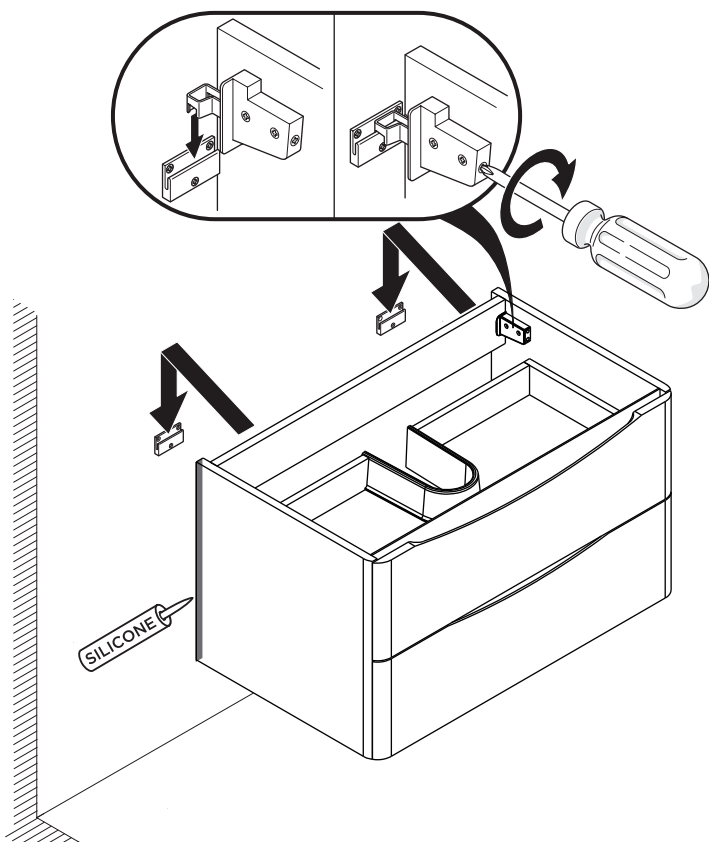
1 Locate cabinet & mark location on the wall



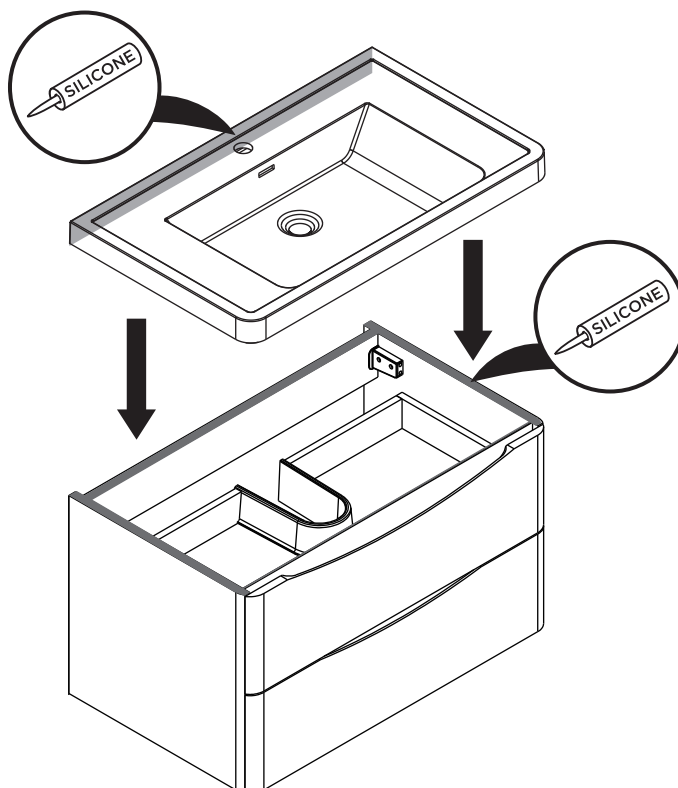
2 Install wall brackets

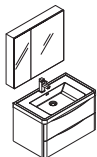


3 Install cabinet



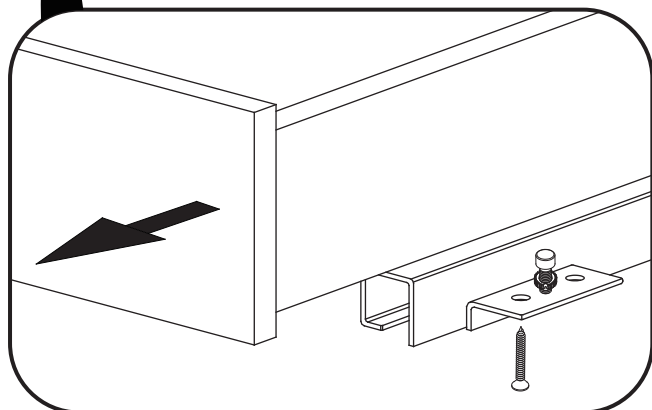
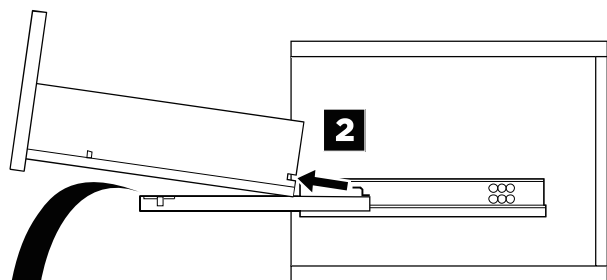
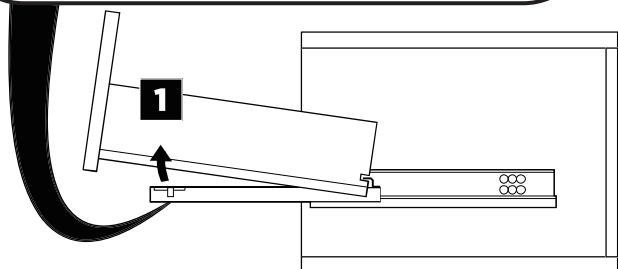
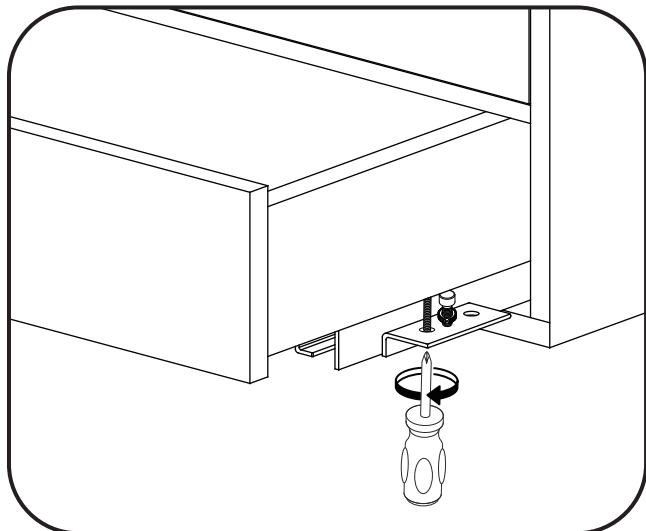
4 Apply a bead of silicone on the top of the cabinet and place sink on the cabinet



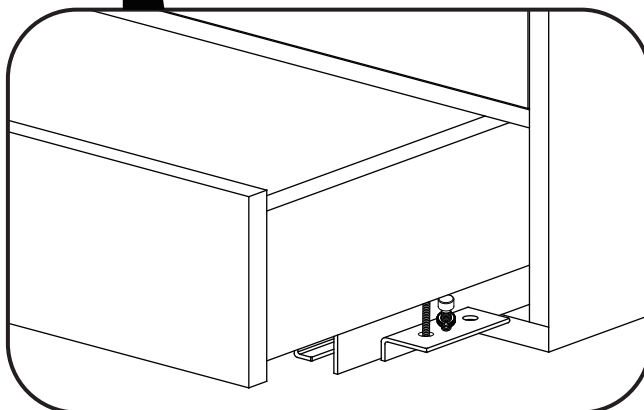
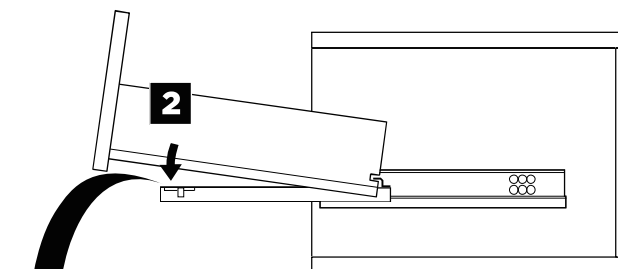
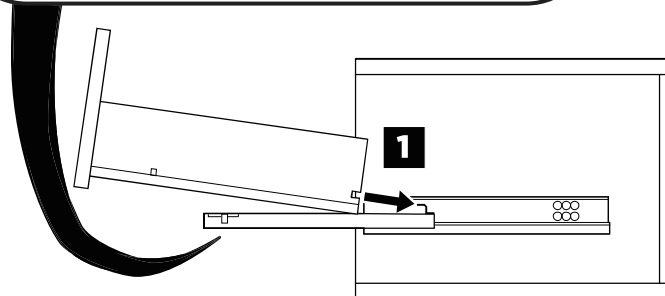
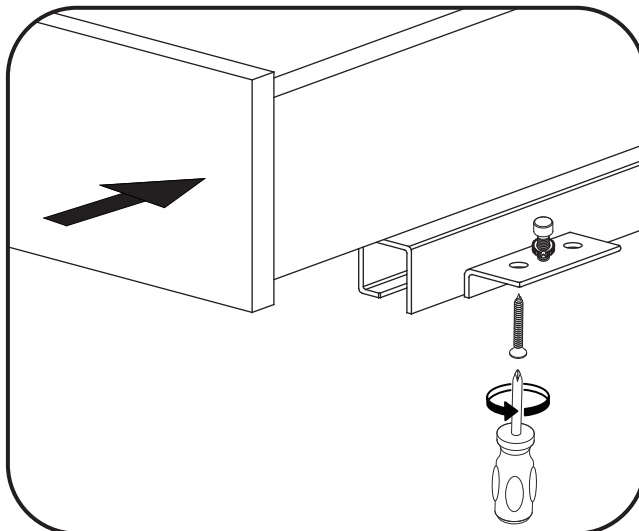


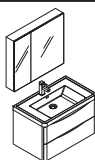
DRAWER REMOVAL & INSTALLATION

REMOVAL



INSTALLATION

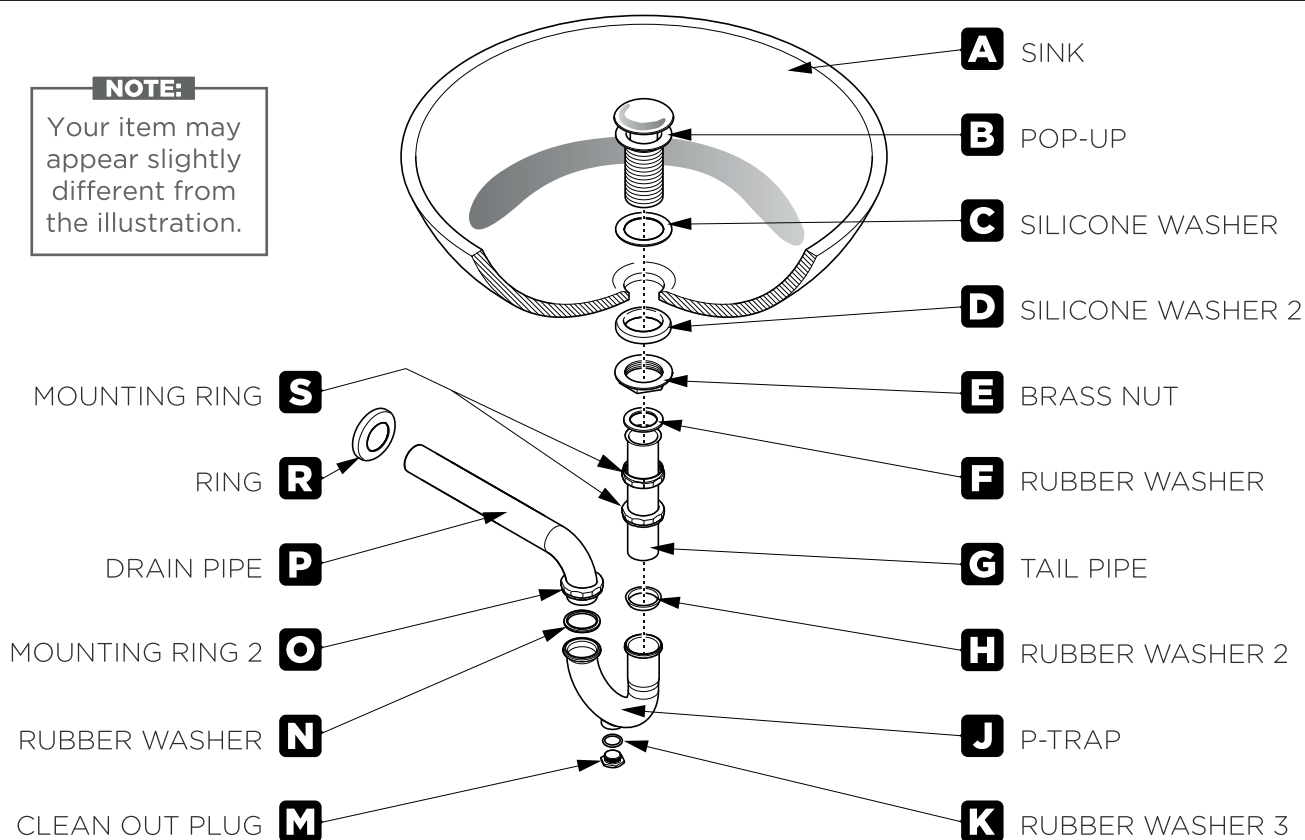




P-TRAP AND POP-UP INSTALLATION INSTRUCTIONS

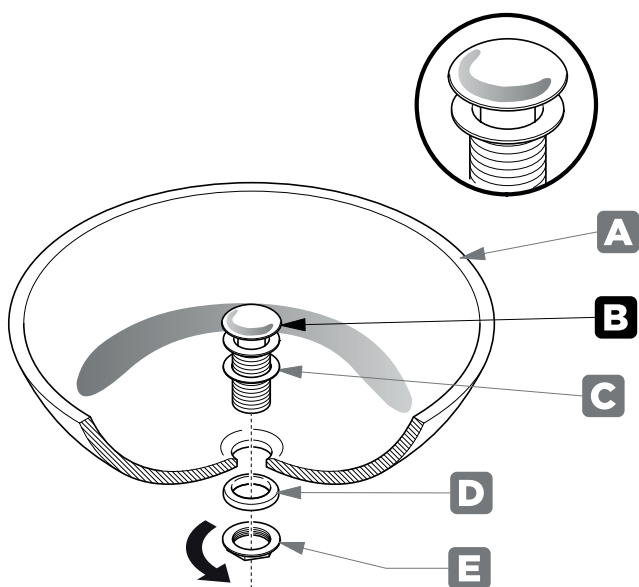
NOTE:

Your item may appear slightly different from the illustration.



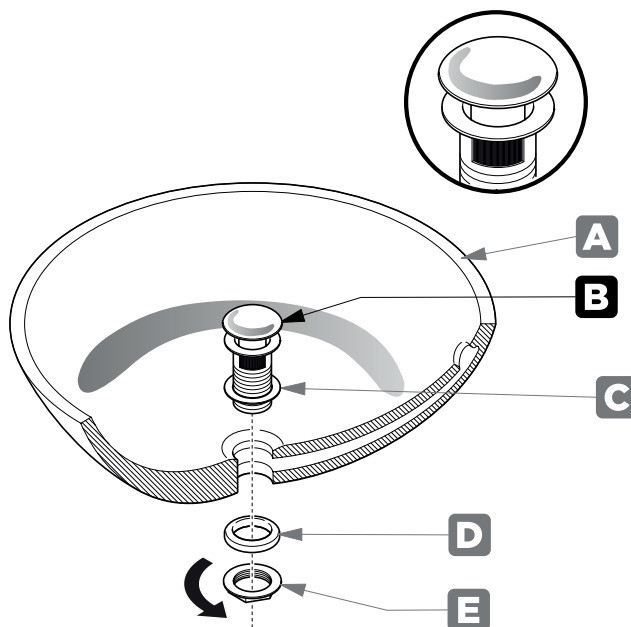
POP-UP INSTALLATION INSTRUCTIONS

FOR SINKS WITHOUT OVERFLOW



OR

FOR SINKS WITH OVERFLOW



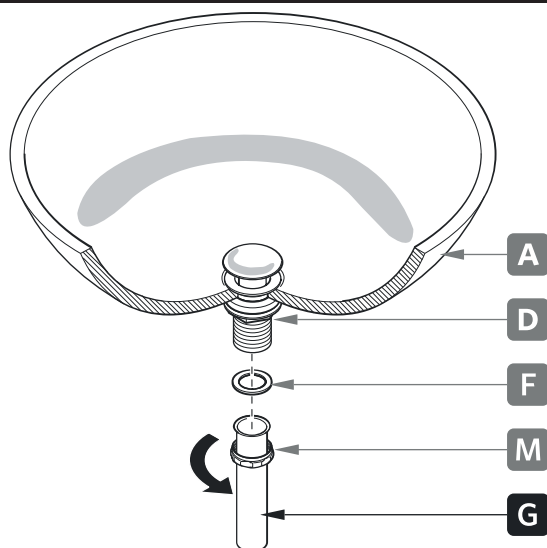


∴kitchensource.com
☎ 1.800.667.8721



FRESCA®

1 Install tail pipe (G)



2 Install p-trap (J)

