

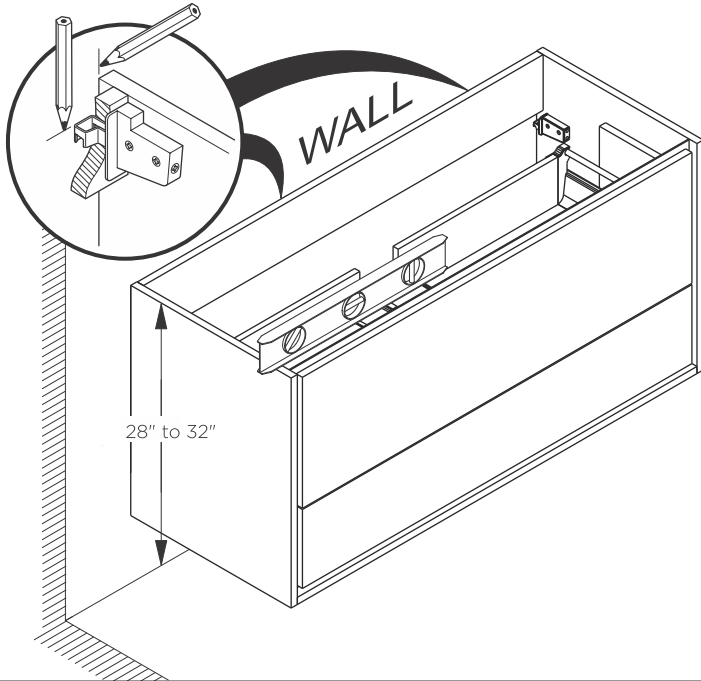
# FVN9248 SENZA INSTALLATION GUIDE

|||kitchensource.com  
1.800.667.8721

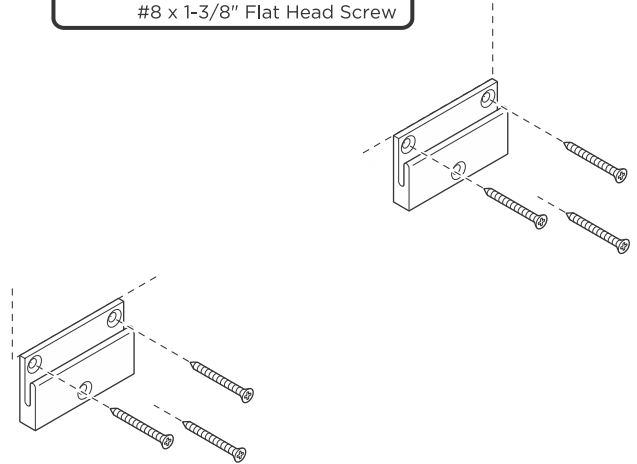
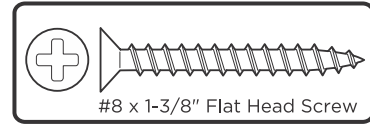


## CABINET INSTALLATION

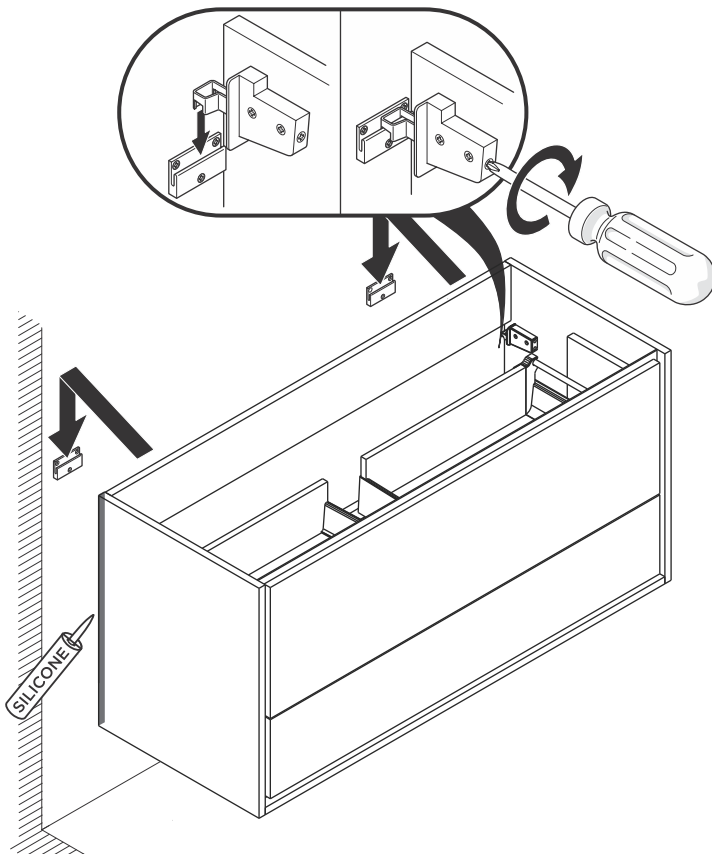
- 1** Locate cabinet & mark location on the wall



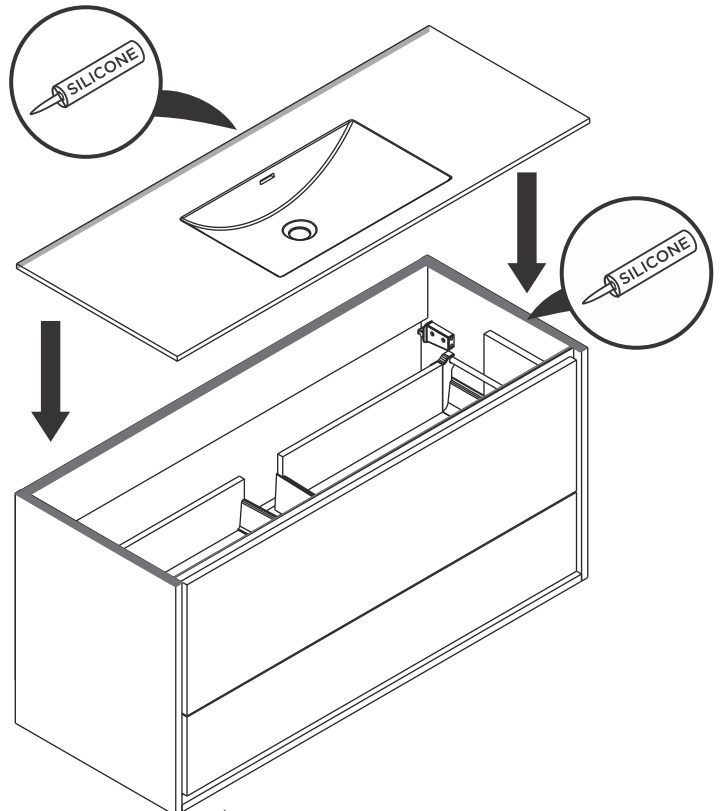
- 2** Install wall brackets

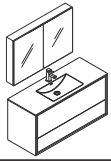


- 3** Install cabinet



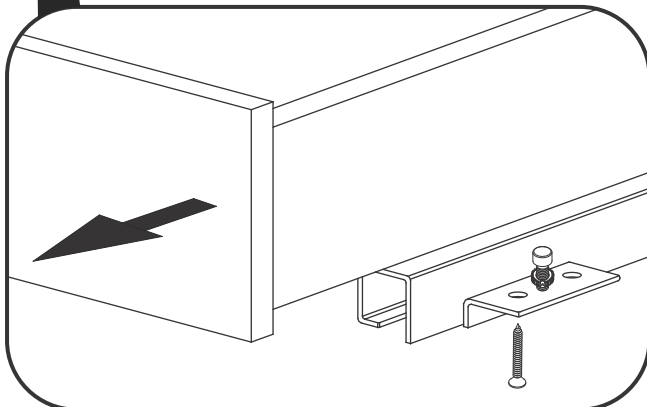
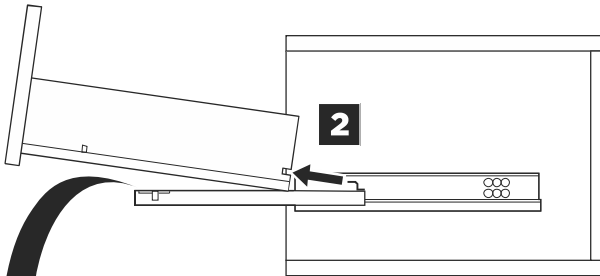
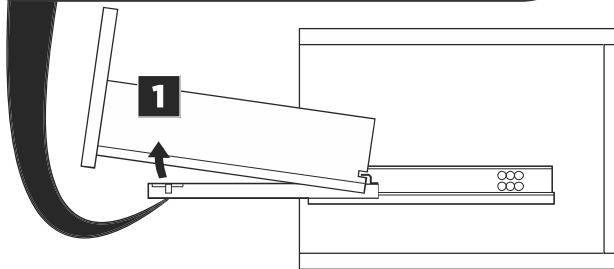
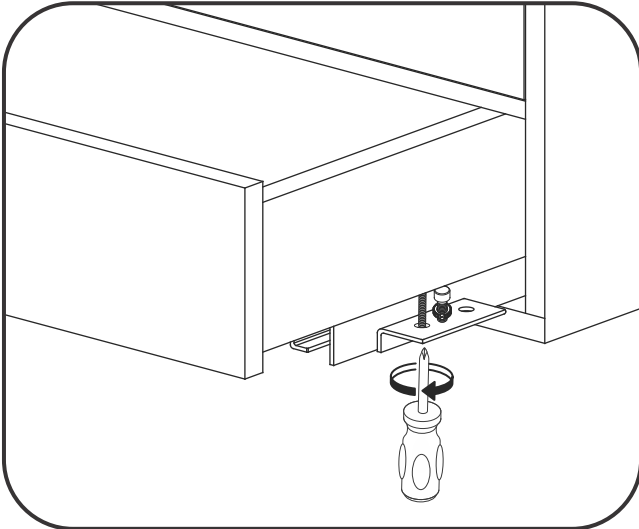
- 4** Apply a bead of silicone on the top of the cabinet and place sink on the cabinet



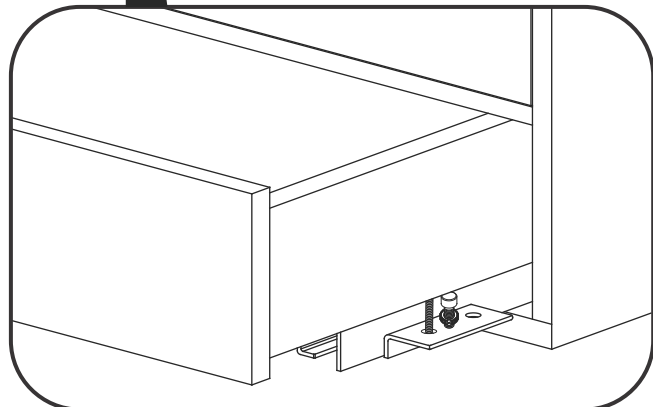
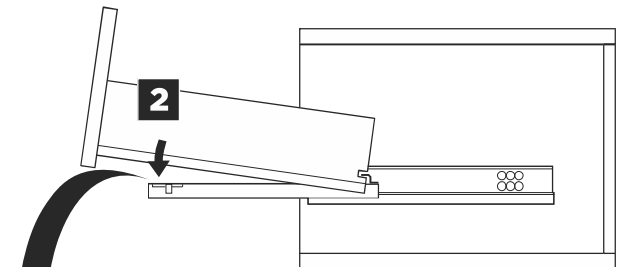
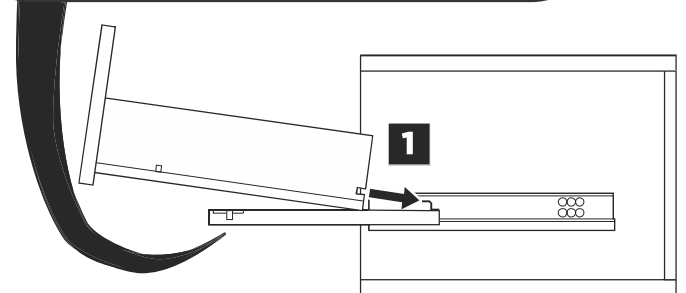
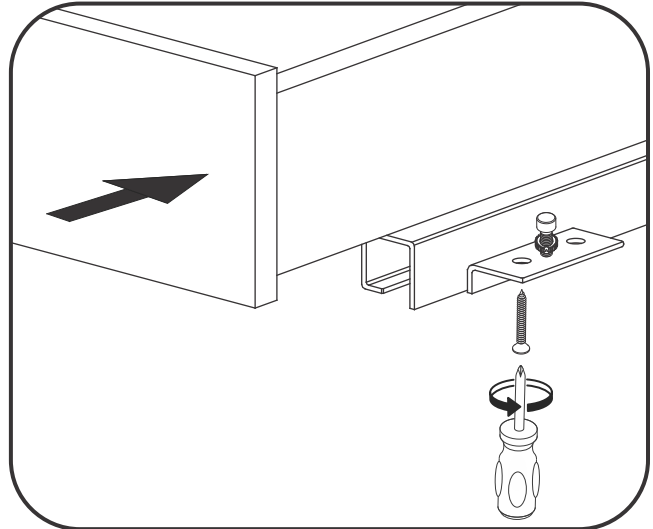


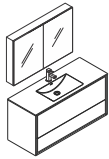
## DRAWER REMOVAL & INSTALLATION

### REMOVAL



### INSTALLATION

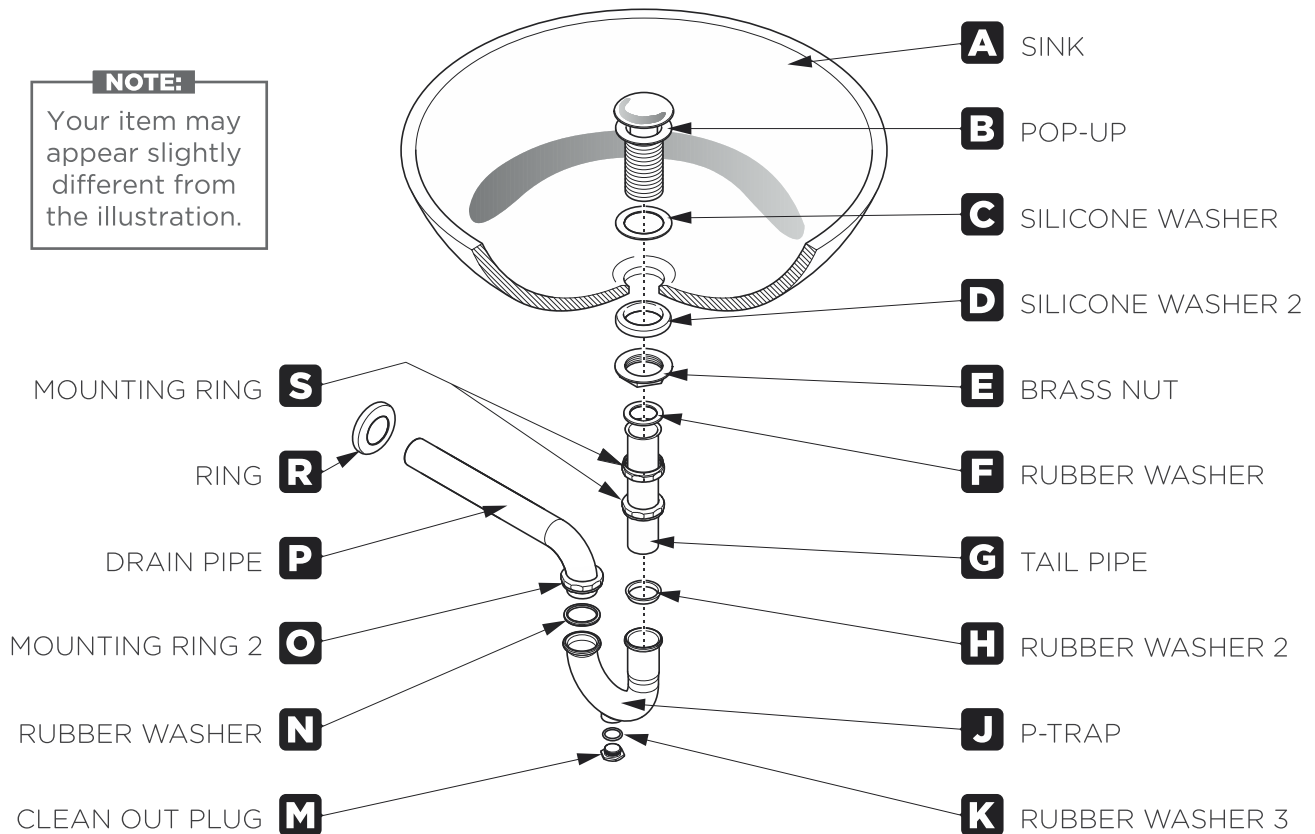




## P-TRAP AND POP-UP INSTALLATION INSTRUCTIONS

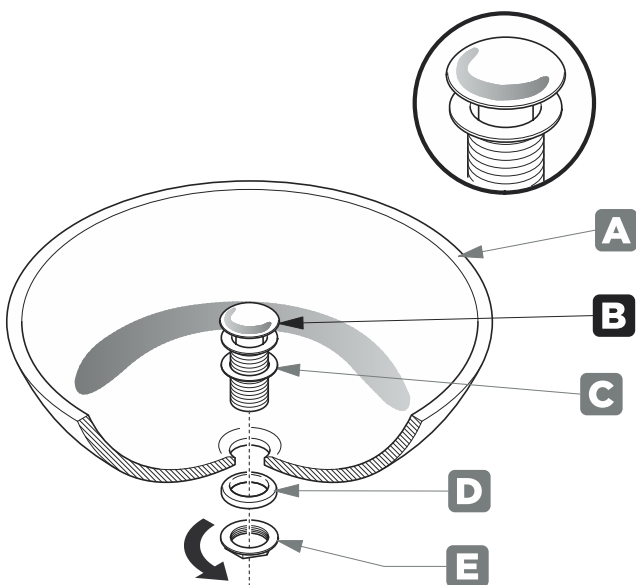
**NOTE:**

Your item may appear slightly different from the illustration.



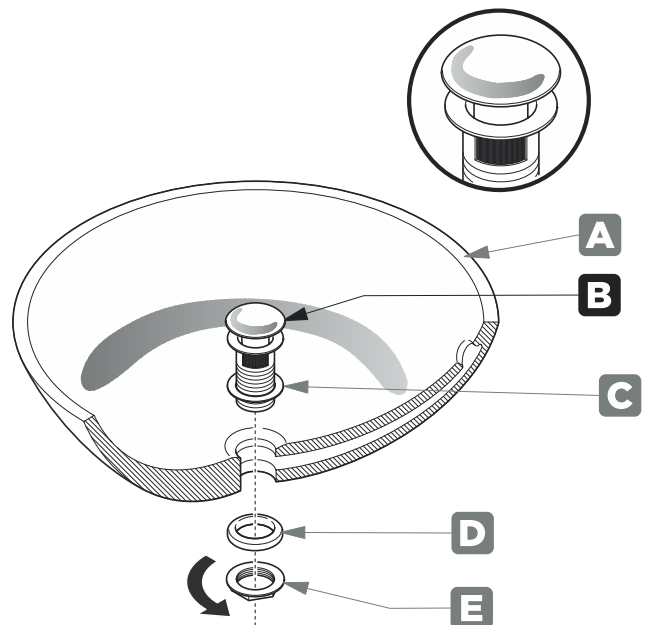
## POP-UP INSTALLATION INSTRUCTIONS

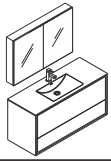
### FOR SINKS WITHOUT OVERFLOW



OR

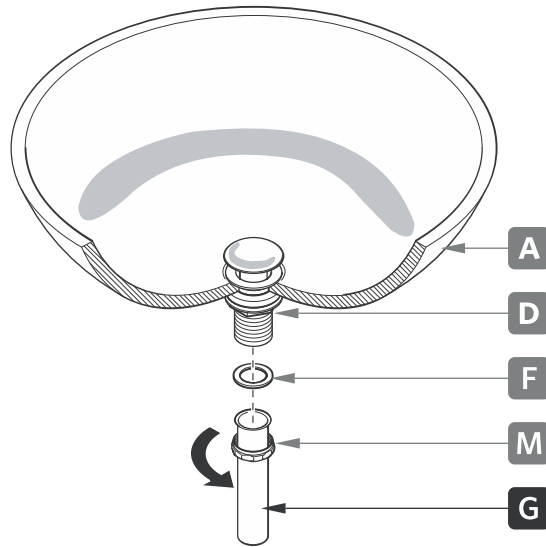
### FOR SINKS WITH OVERFLOW





## P-TRAP INSTALLATION

### 1 Install tail pipe (G)



### 2 Install p-trap (J)

