

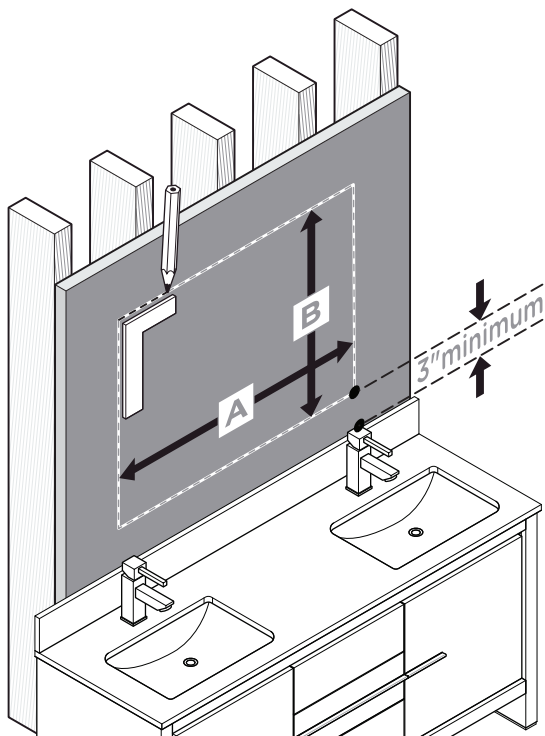
FVN9260-D SENZA INSTALLATION GUIDE

|||kitchensource.com
1.800.667.8721



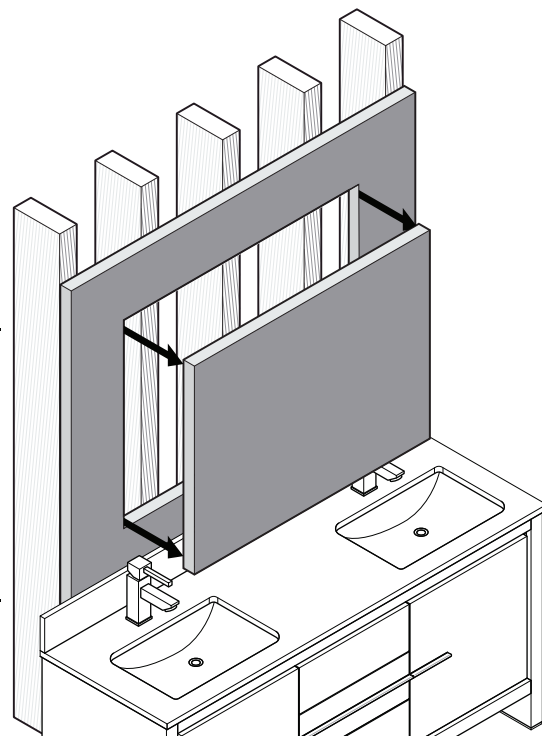
RECESS-MOUNT INSTALLATION

1



Draw the perimeter of the cabinet on the wall.

2



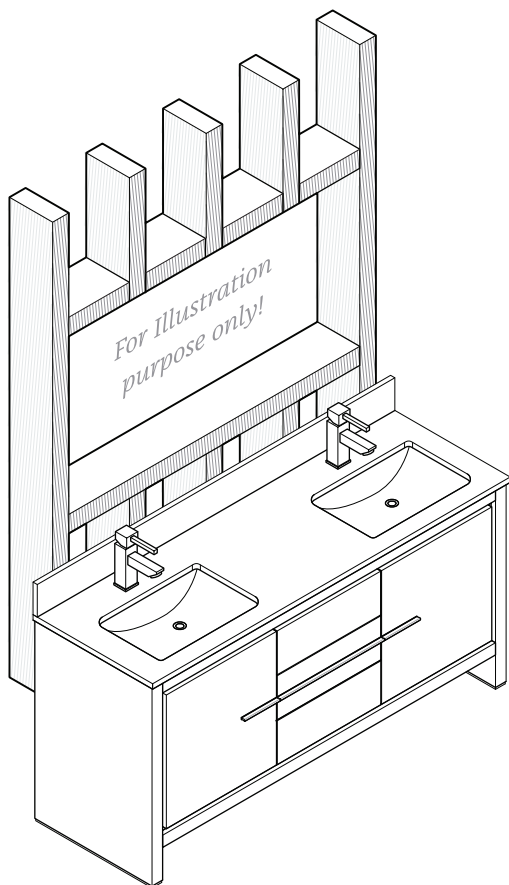
Cut the perimeter with appropriate tool.



NOTE:

Determine overall medicine cabinet dimensions. If recessing medicine cabinet, determine rough in dimensions.

3



Frame the cutout opening.



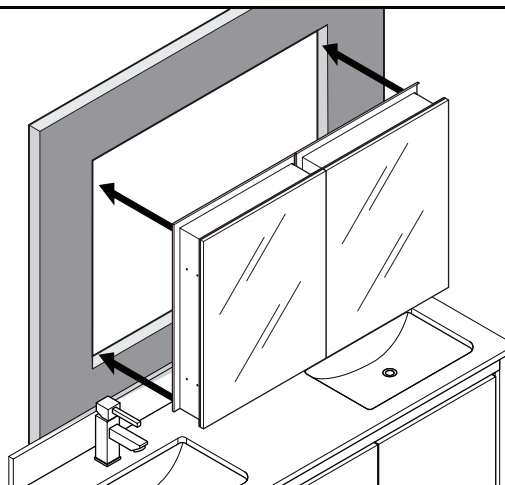
NOTE:

Please consult with a licensed contractor for proper medicine cabinet framing.

ROUGH IN DIMENSIONS

Model SKU	Width A	Height B	Depth
FMC8019	59.5"	26"	5"
FMC8013	49.5"	26"	5"

4

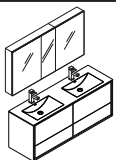


Insert the cabinet into the opening.



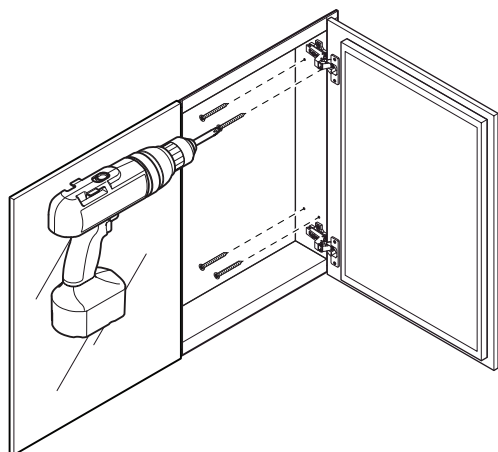
FVN9260-D | SENZA | INSTALLATION GUIDE

PAGE 5



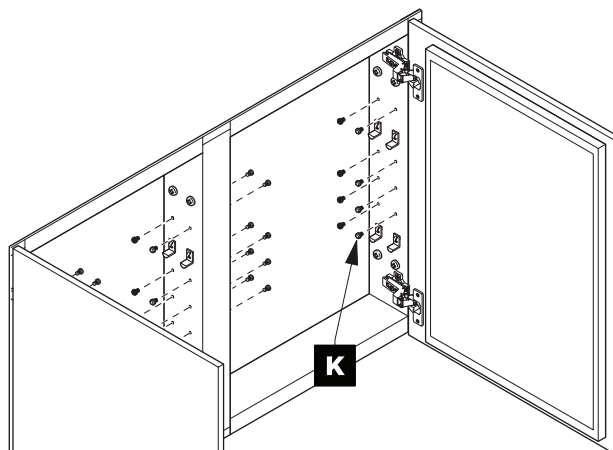
RECESS-MOUNT INSTALLATION

5



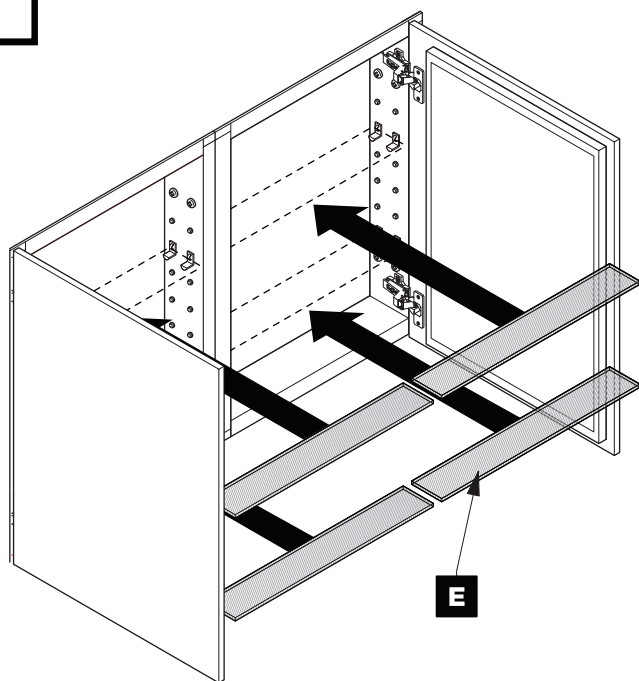
Attach cabinet to the wall from the each side.

6

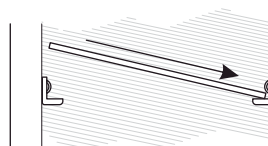


Fill the remaining holes with a plugs **(K)**.

7

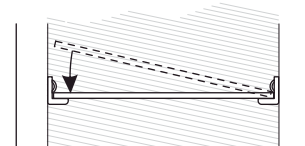


Insert the shelves **(E)**. Follow the steps below for each shelf.



7.a

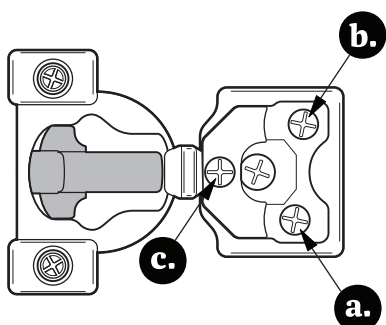
Push a side of the shelf **(E)** into left or shelf clips **(J)**.



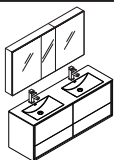
7.b

Snap the shelf **(E)** down into opposite side.

OPTIONAL DOOR ADJUSTMENT



- a.** This screw allow you to adjust pitch side to side.
- b.** This screw releases cabinet's door and allows up and down adjustment.
- c.** This screw allow you to adjust the gap between the doors.



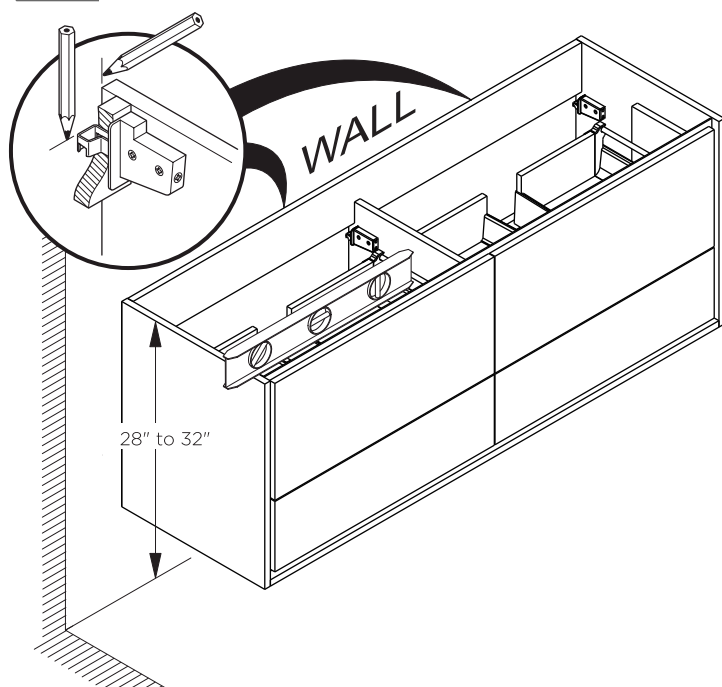
FVN9260-D SENZA INSTALLATION GUIDE

|||kitchensource.com
1.800.667.8721

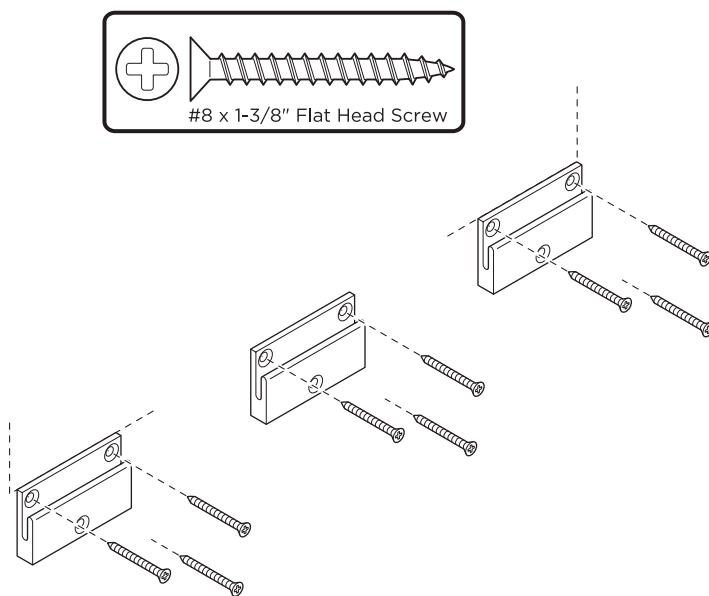
FRESCA®

CABINET INSTALLATION

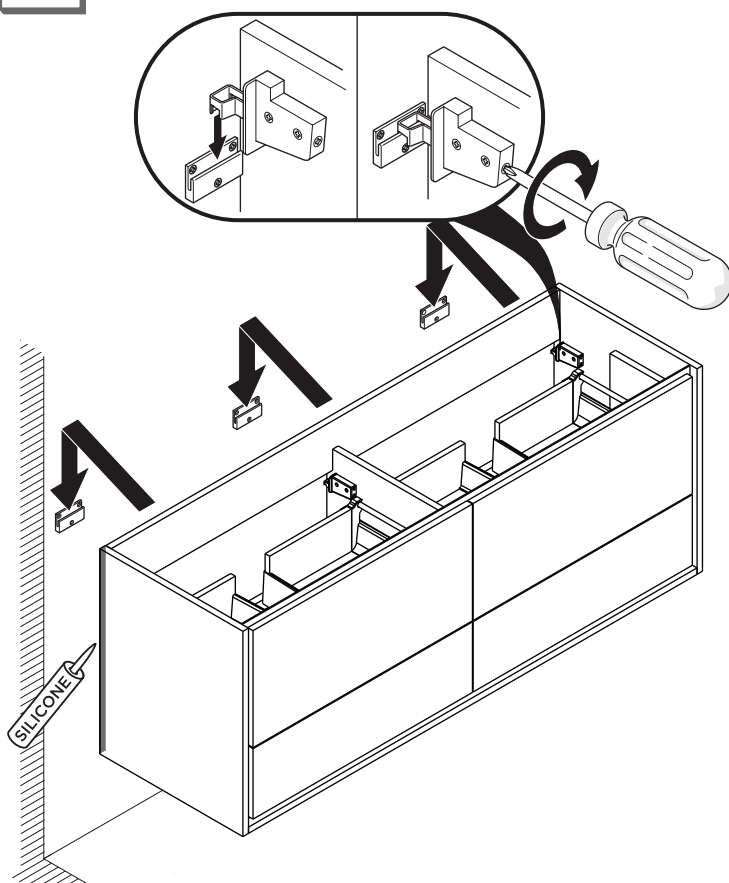
- 1** Locate cabinet & mark location on the wall



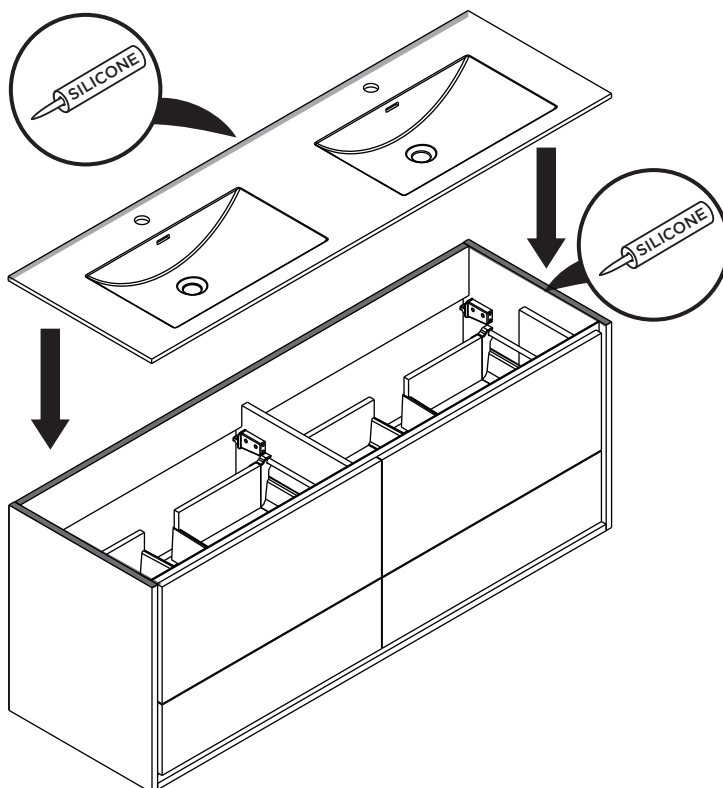
- 2** Install wall brackets

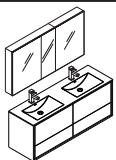


- 3** Install cabinet



- 4** Apply a bead of silicone on the top of the cabinet and place sink on the cabinet





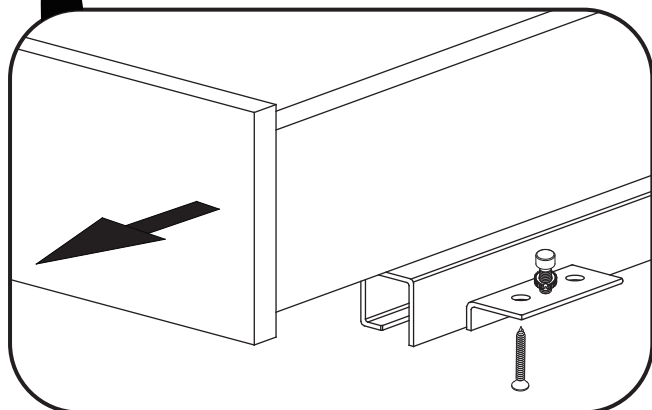
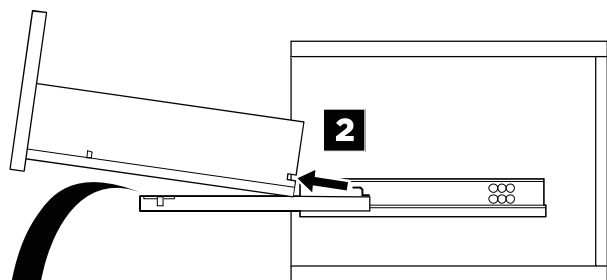
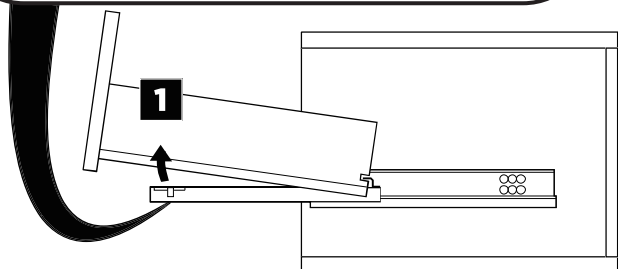
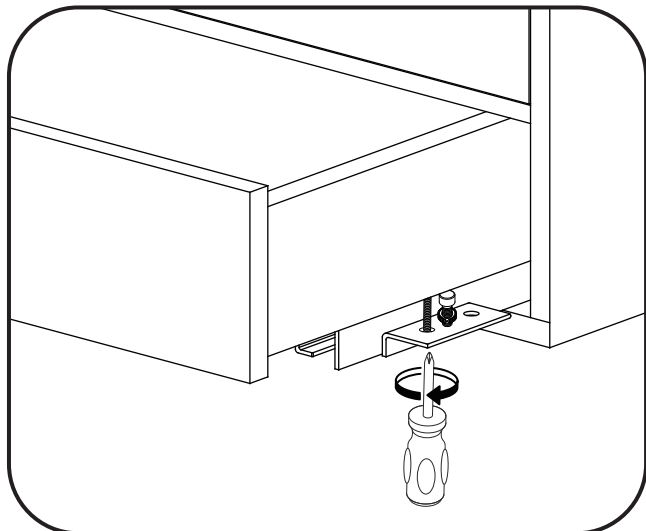
FVN9260-D SENZA INSTALLATION GUIDE

|||kitchensource.com
1.800.667.8721

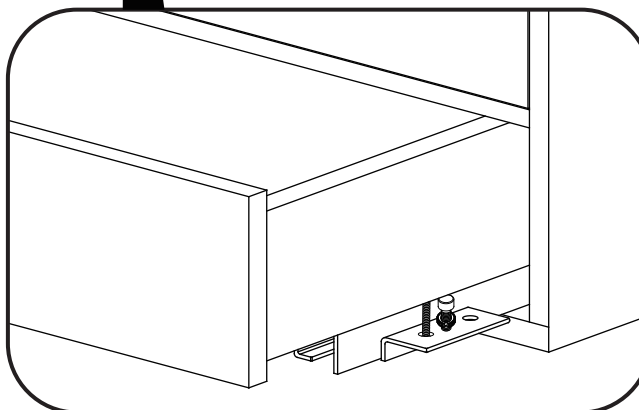
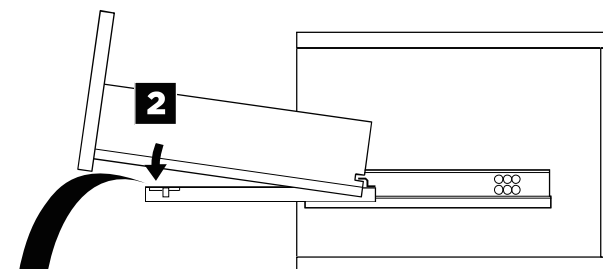
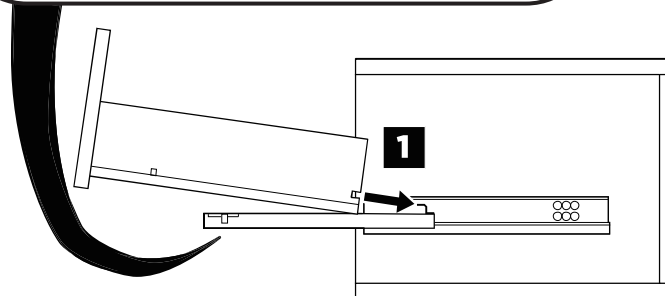
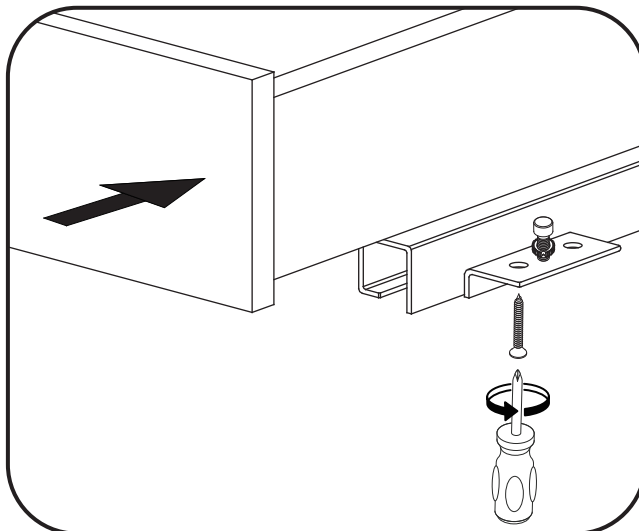


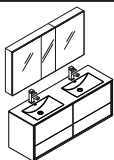
DRAWER REMOVAL & INSTALLATION

REMOVAL



INSTALLATION





FVN9260-D SENZA INSTALLATION GUIDE

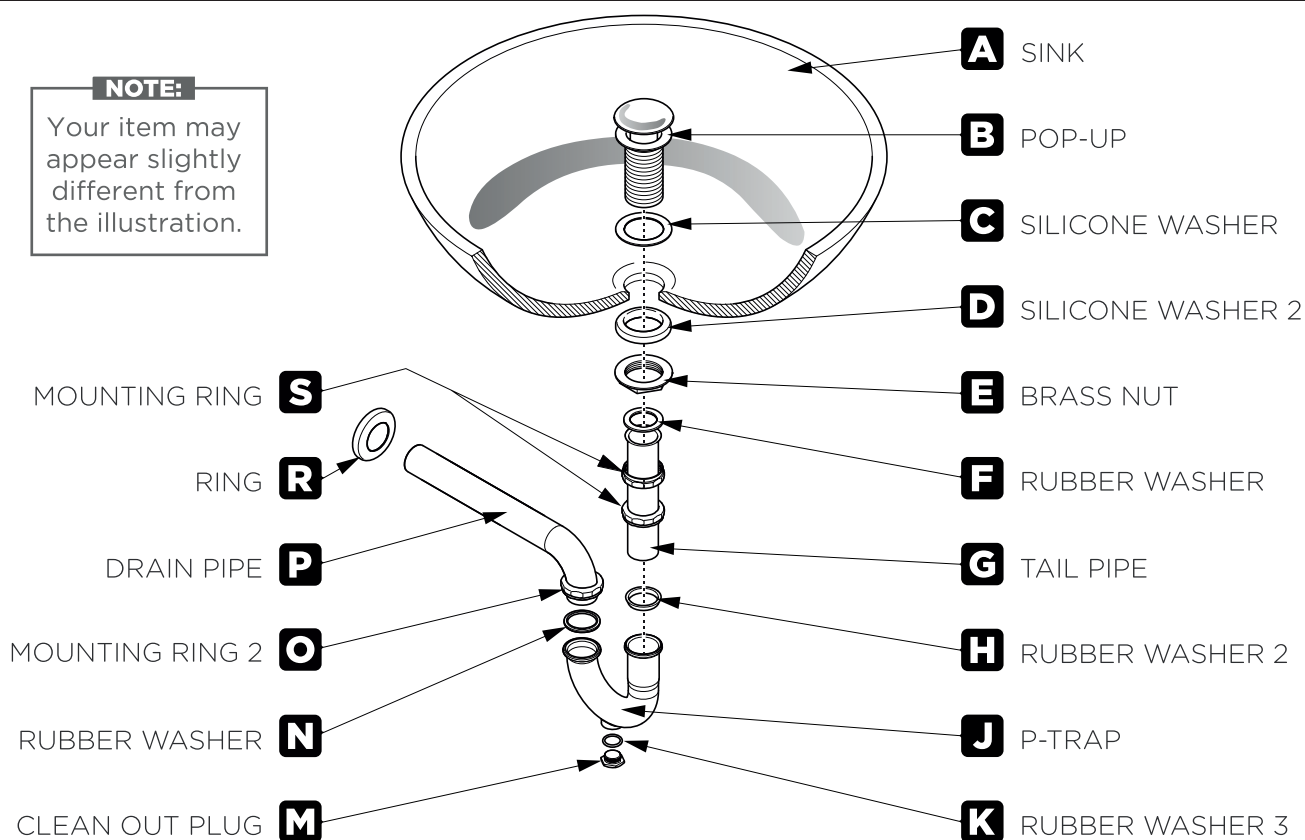
|||kitchensource.com
1.800.667.8721



P-TRAP AND POP-UP INSTALLATION INSTRUCTIONS

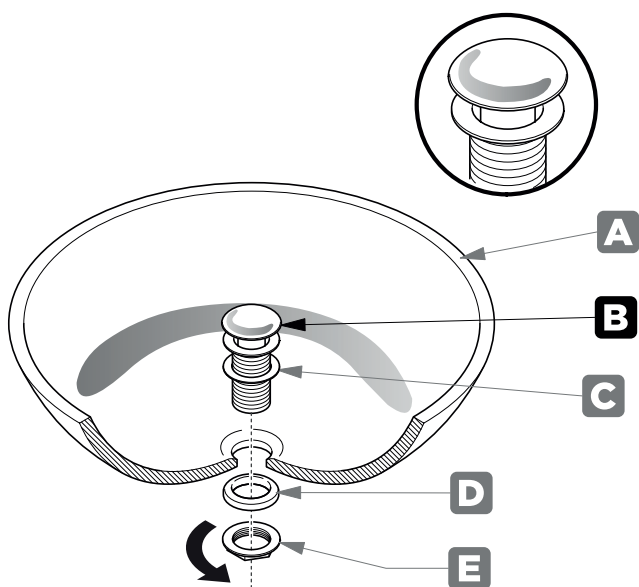
NOTE:

Your item may appear slightly different from the illustration.



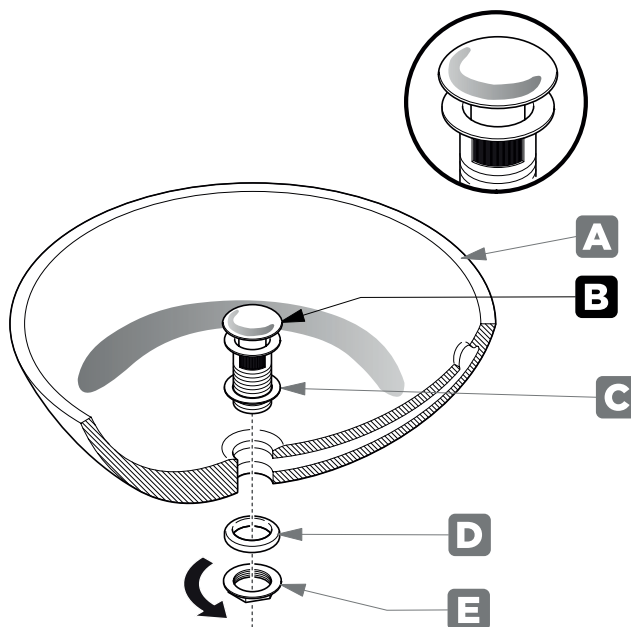
POP-UP INSTALLATION INSTRUCTIONS

FOR SINKS WITHOUT OVERFLOW



OR

FOR SINKS WITH OVERFLOW

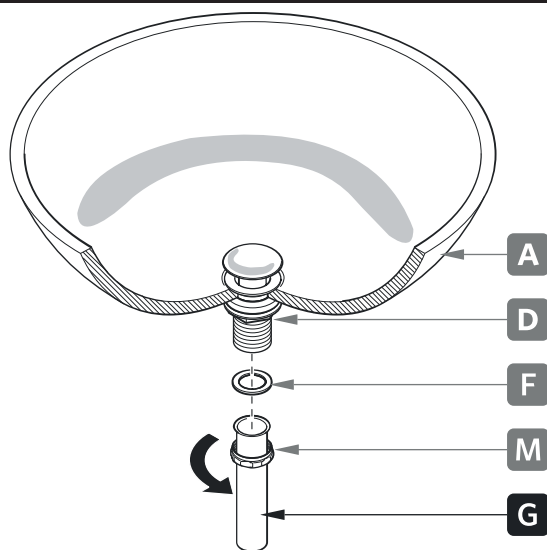




∴kitchensource.com
☎ 1.800.667.8721



1 Install tail pipe (G)



2 Install p-trap (J)

