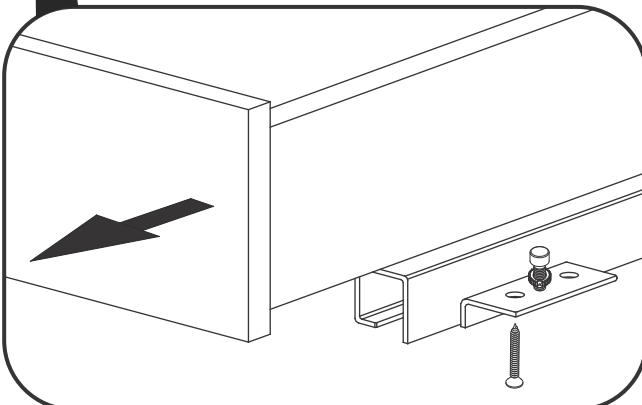
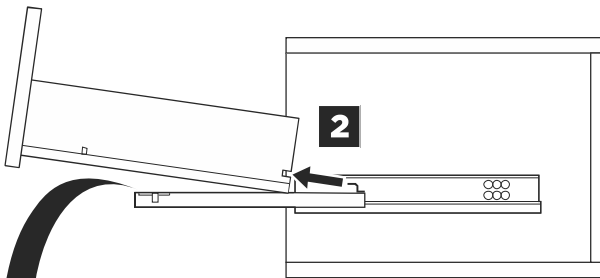
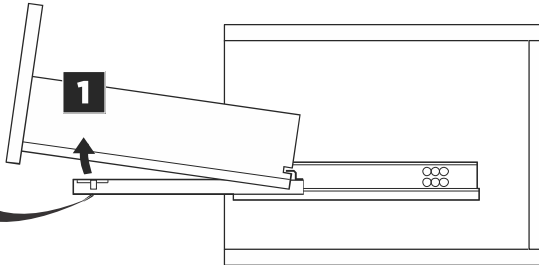
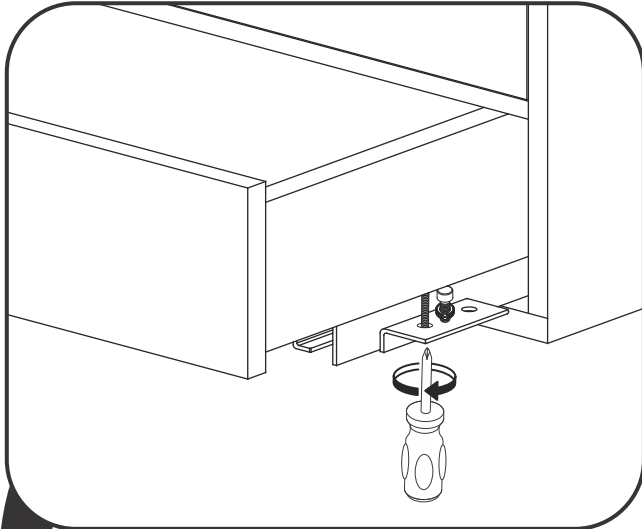


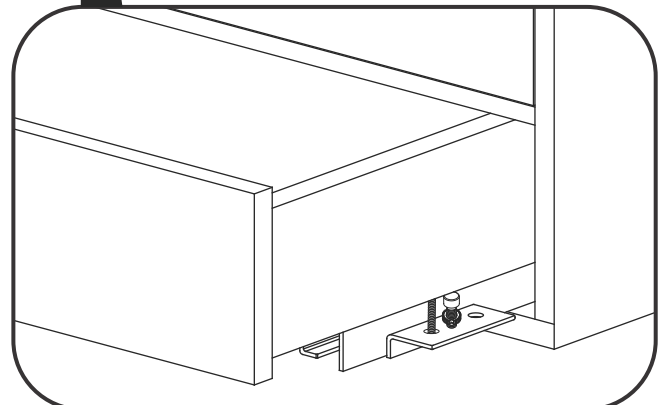
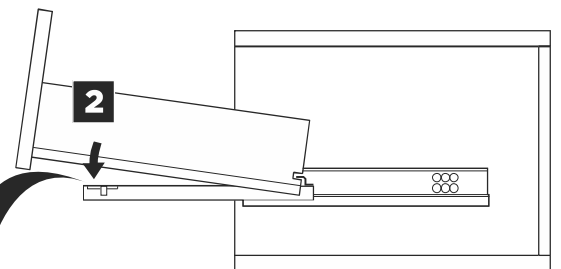
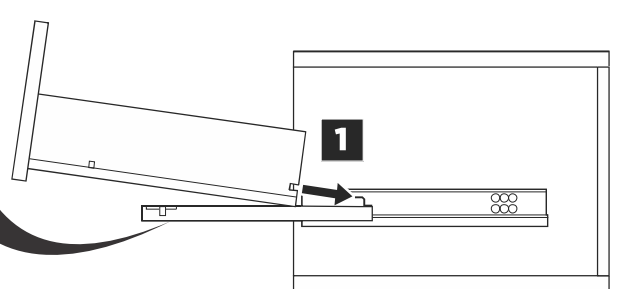
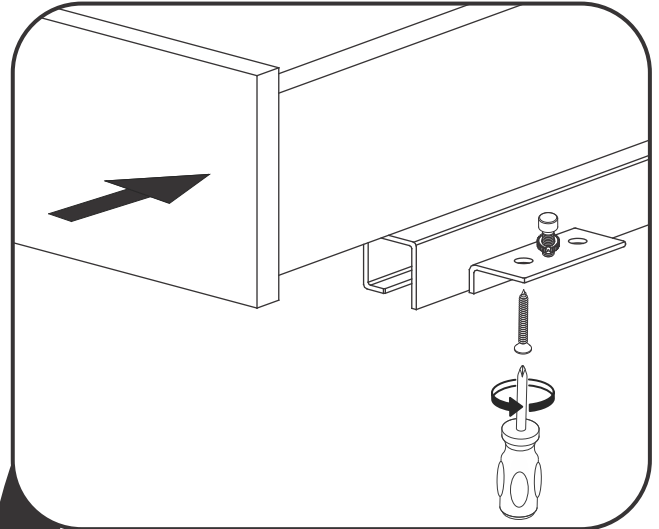


## DRAWER REMOVAL & INSTALLATION

### REMOVAL



### INSTALLATION

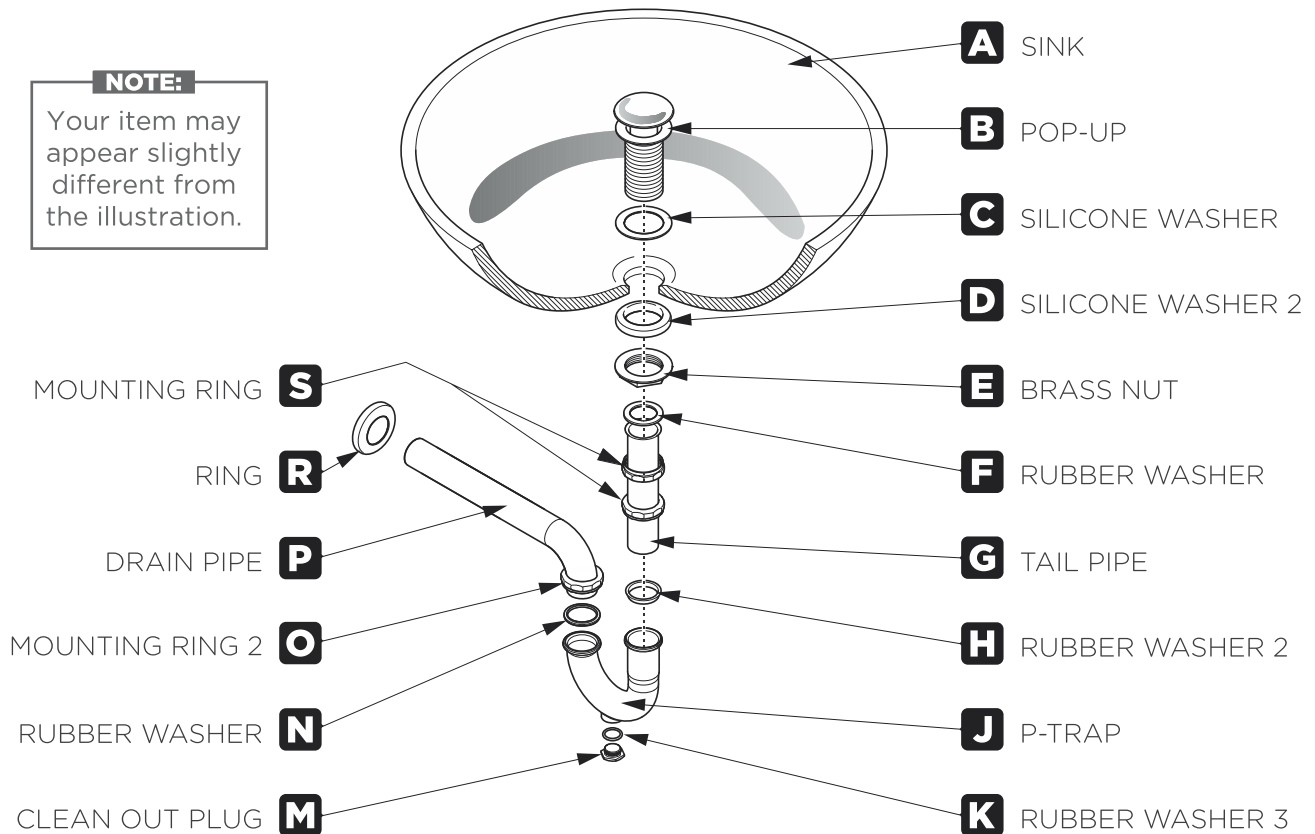




## P-TRAP AND POP-UP INSTALLATION INSTRUCTIONS

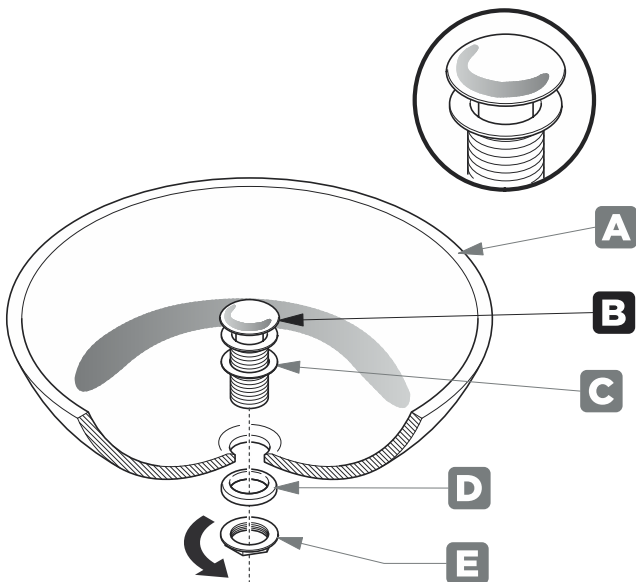
**NOTE:**

Your item may appear slightly different from the illustration.



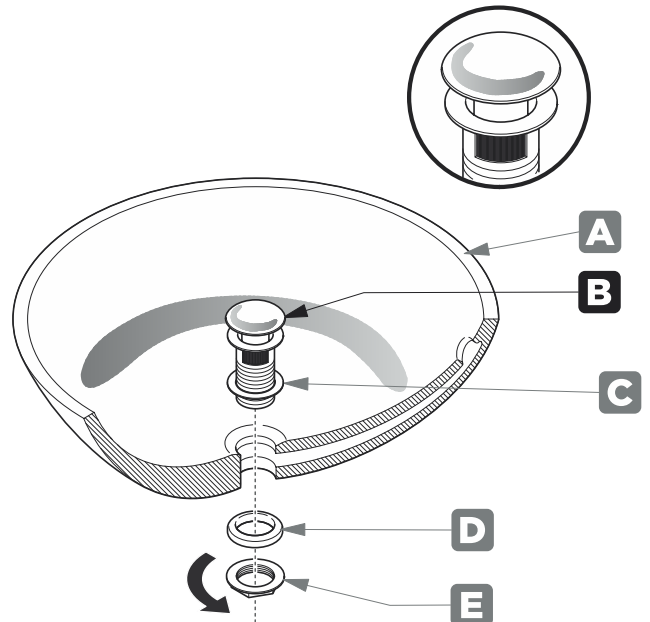
## POP-UP INSTALLATION INSTRUCTIONS

### FOR SINKS WITHOUT OVERFLOW



OR

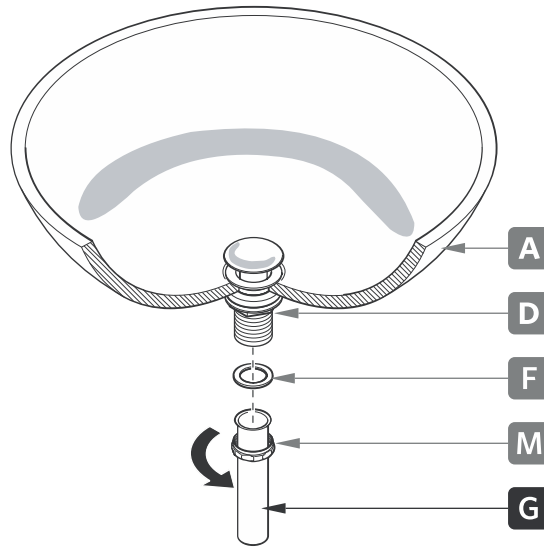
### FOR SINKS WITH OVERFLOW





## P-TRAP INSTALLATION

### 1 Install tail pipe (G)



### 2 Install p-trap (J)

