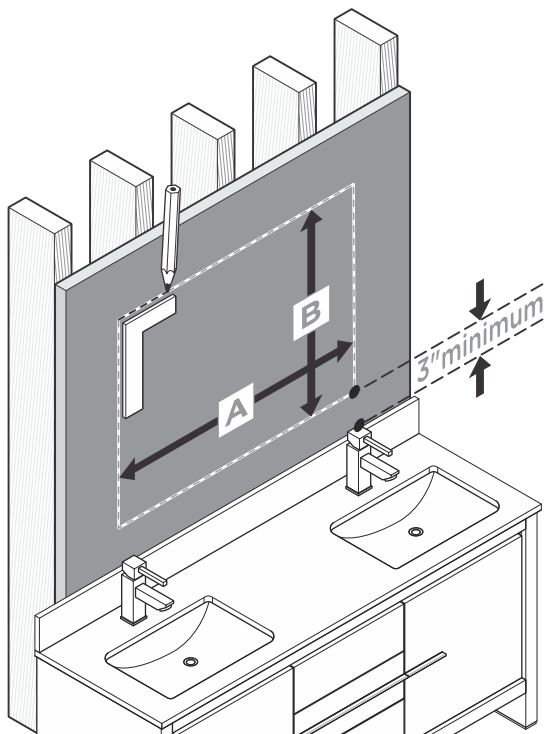




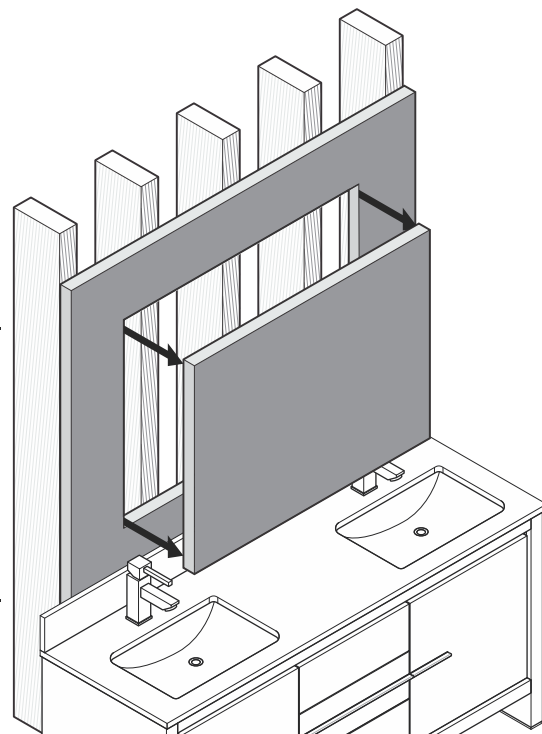
## RECESS-MOUNT INSTALLATION

**1**



Draw the perimeter of the cabinet on the wall.

**2**



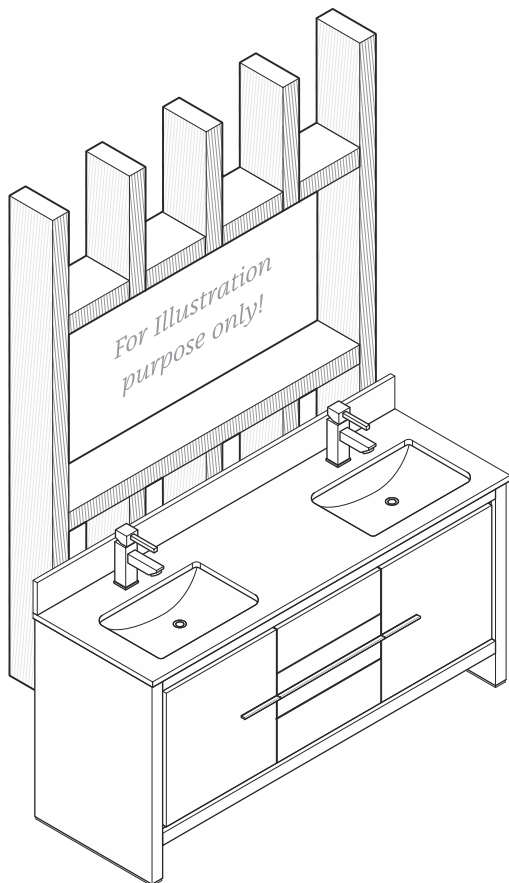
Cut the perimeter with appropriate tool.



**NOTE:**

Determine overall medicine cabinet dimensions. If recessing medicine cabinet, determine rough in dimensions.

**3**



Frame the cutout opening.



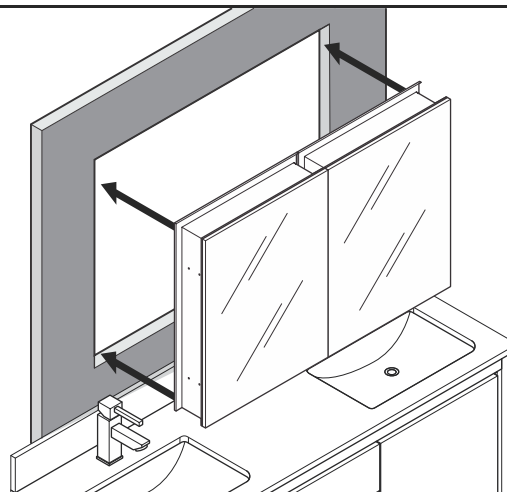
**NOTE:**

Please consult with a licensed contractor for proper medicine cabinet framing.

### ROUGH IN DIMENSIONS

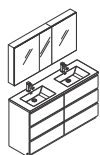
Model SKU	Width <b>A</b>	Height <b>B</b>	Depth
<b>FMC8019</b>	59.5"	26"	5"
<b>FMC8013</b>	49.5"	26"	5"

**4**



Insert the cabinet into the opening.





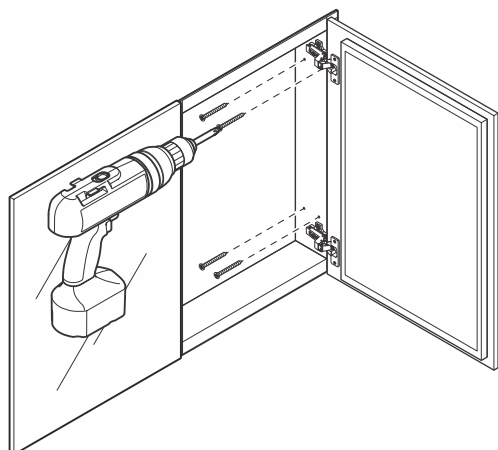
# FVN93-3636 SENZA INSTALLATION GUIDE

|||kitchensource.com  
1.800.667.8721



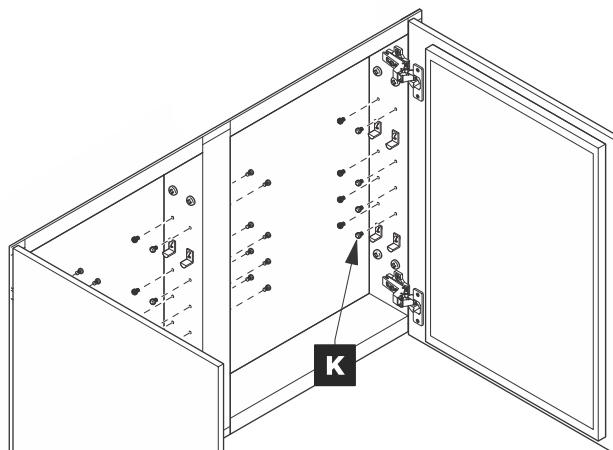
## RECESS-MOUNT INSTALLATION

5



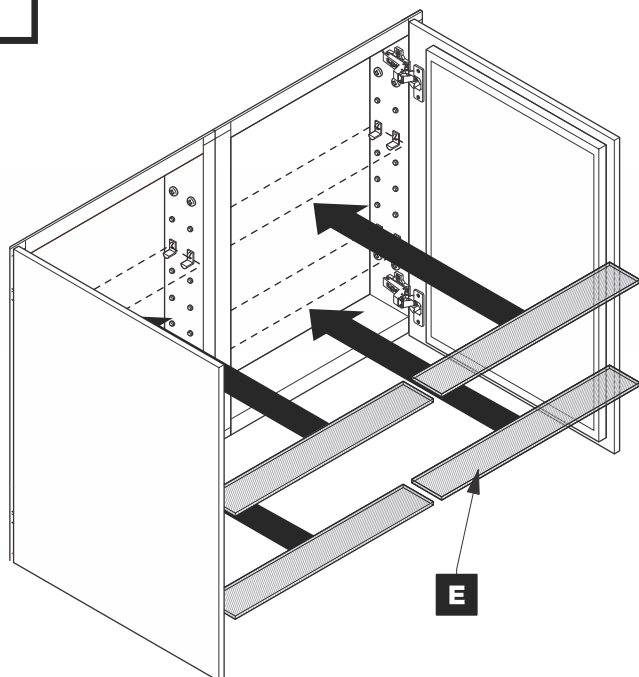
Attach cabinet to the wall from the each side.

6

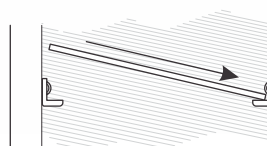


Fill the remaining holes with a plugs (K).

7

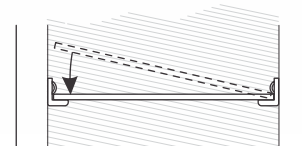


Insert the shelves (E). Follow the steps below for each shelf.



**7.a**

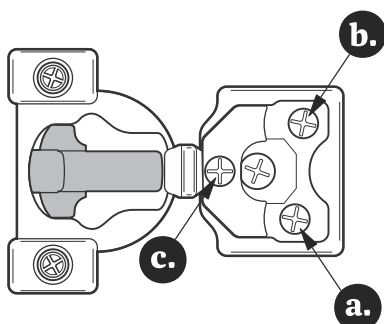
Push a side of the shelf (E) into left or shelf clips (J).



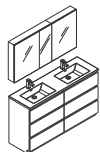
**7.b**

Snap the shelf (E) down into opposite side.

## OPTIONAL DOOR ADJUSTMENT

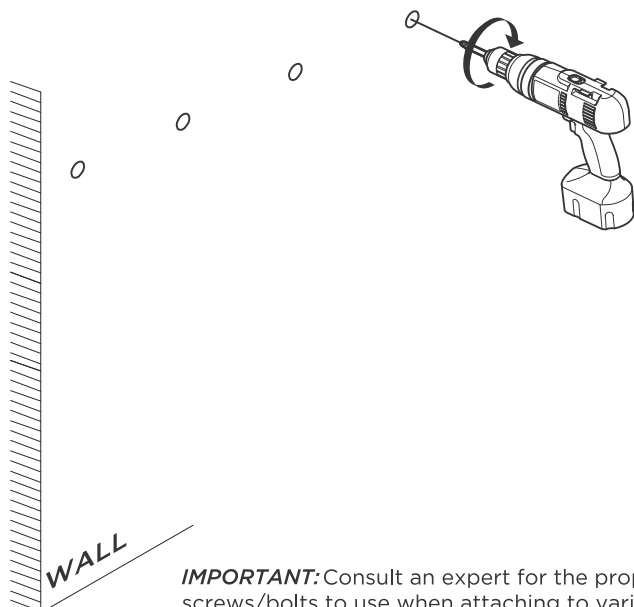


- a.** This screw allow you to adjust pitch side to side.
- b.** This screw releases cabinet's door and allows up and down adjustment.
- c.** This screw allow you to adjust the gap between the doors.



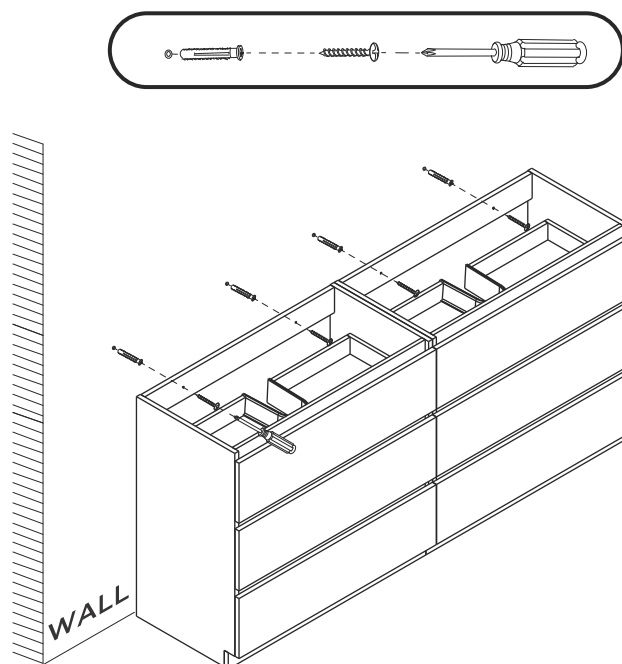
## CABINET INSTALLATION

- 1** Drill holes and insert the dowels.

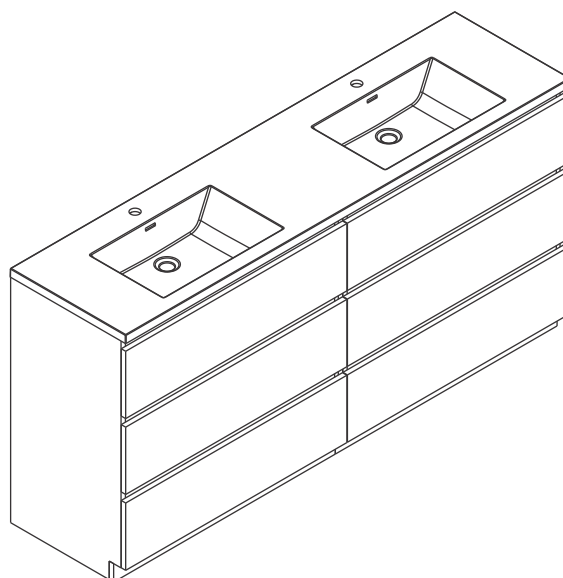
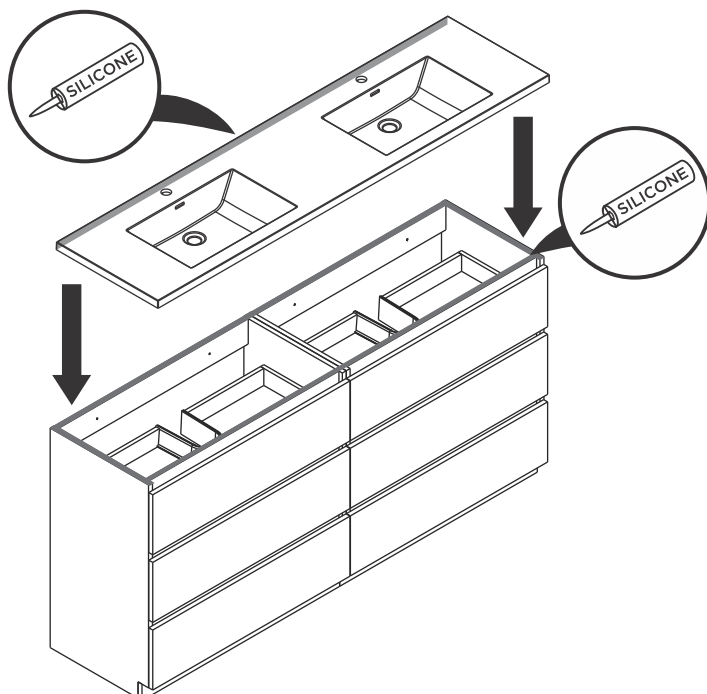


**IMPORTANT:** Consult an expert for the proper screws/bolts to use when attaching to various constructions. Screws provided do not attach to all wall construction types. Anchors are not required if brackets are installed in stud.

- 2** Mark anchor mounting hole locations on wall as shown. Drill holes in the finished wall as required.



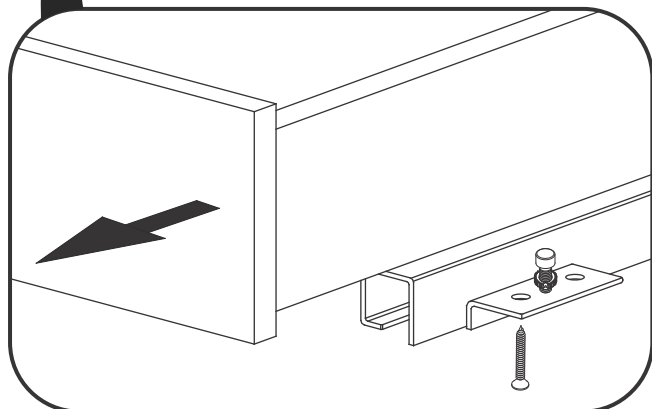
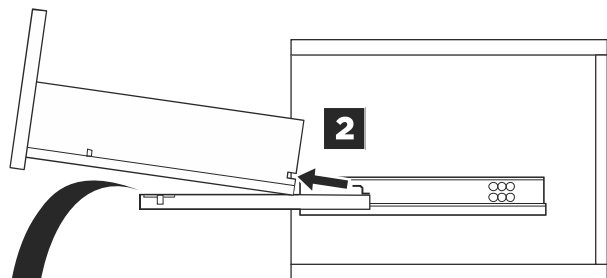
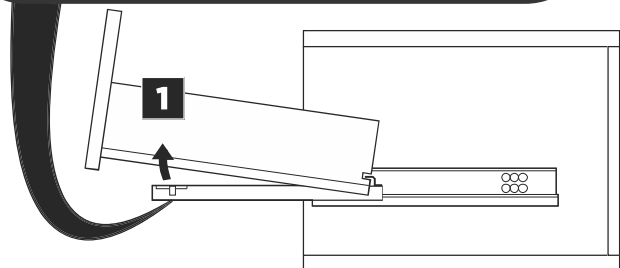
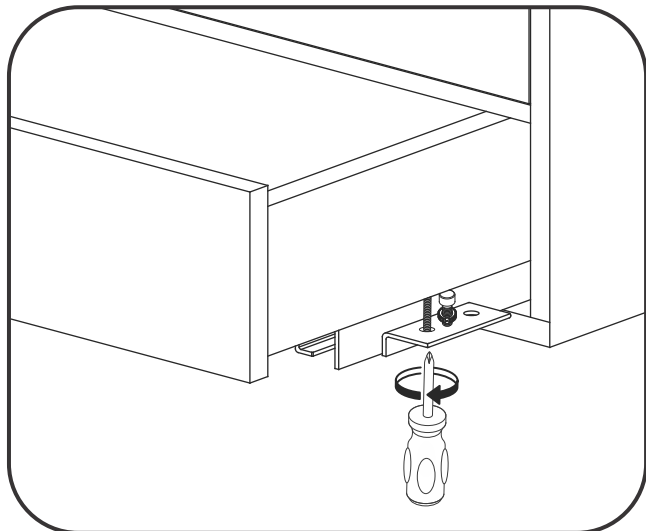
- 3** Apply silicone and install sink.



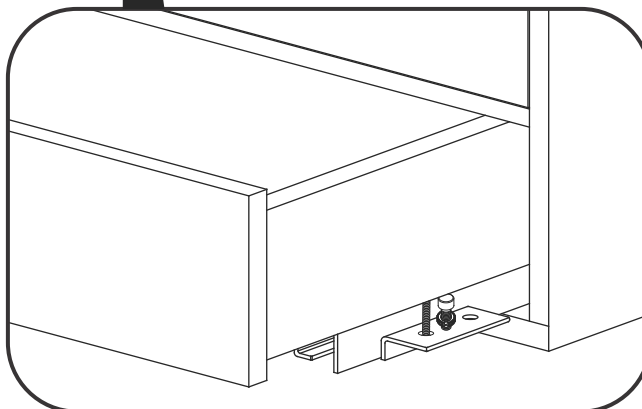
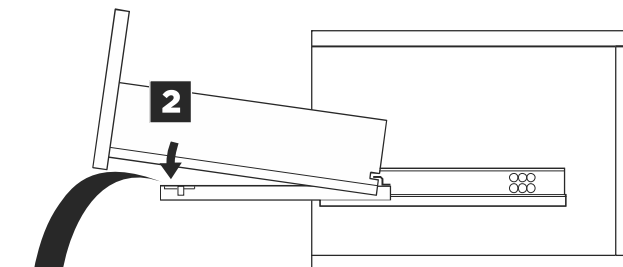
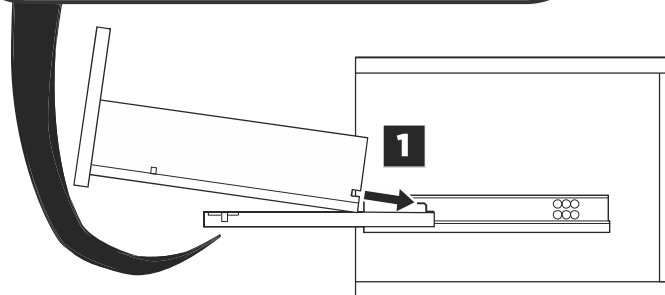
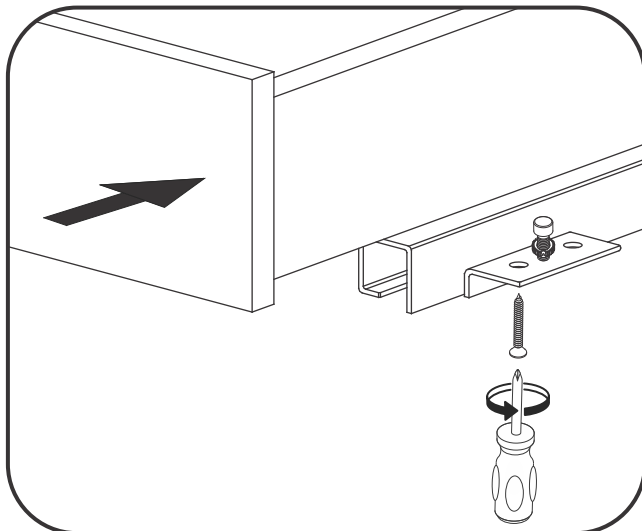


## DRAWER REMOVAL & INSTALLATION

### REMOVAL



### INSTALLATION

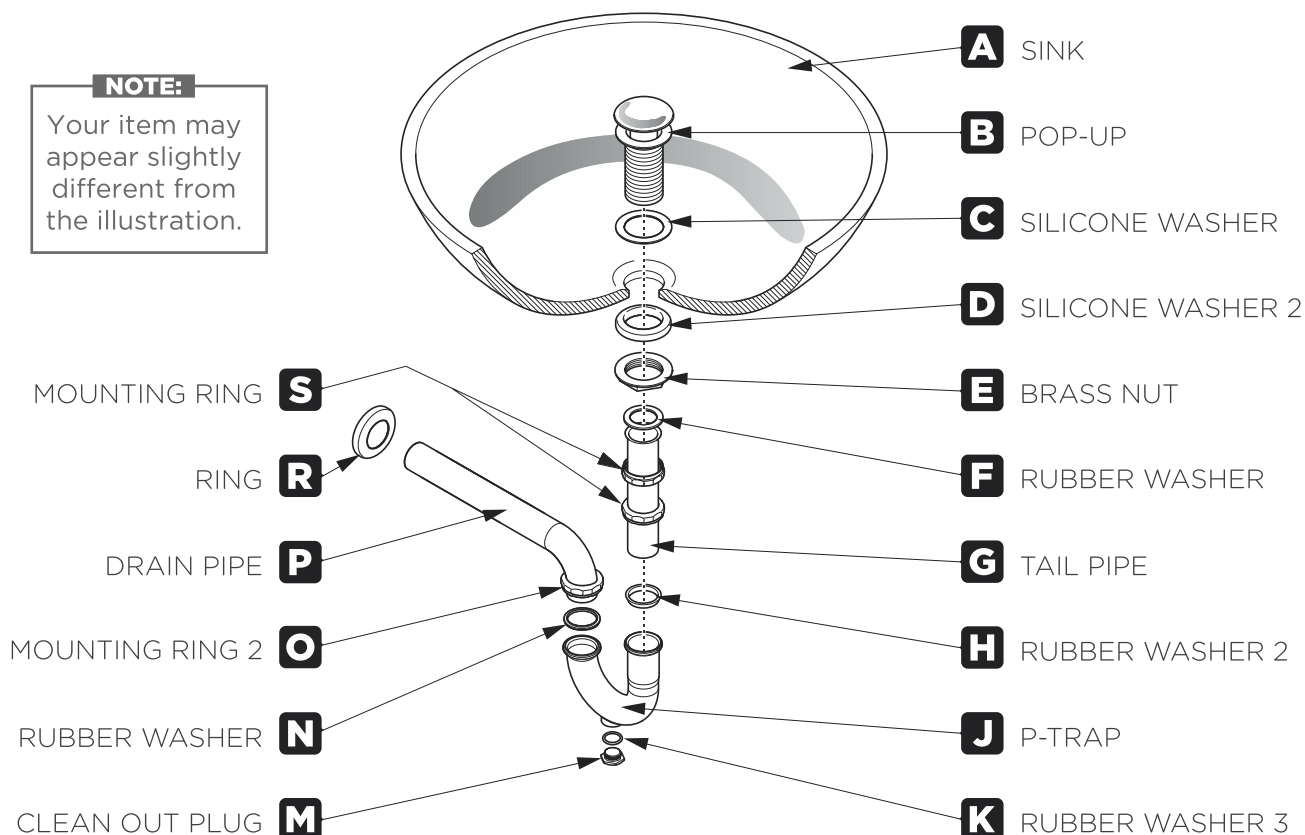




## P-TRAP AND POP-UP INSTALLATION INSTRUCTIONS

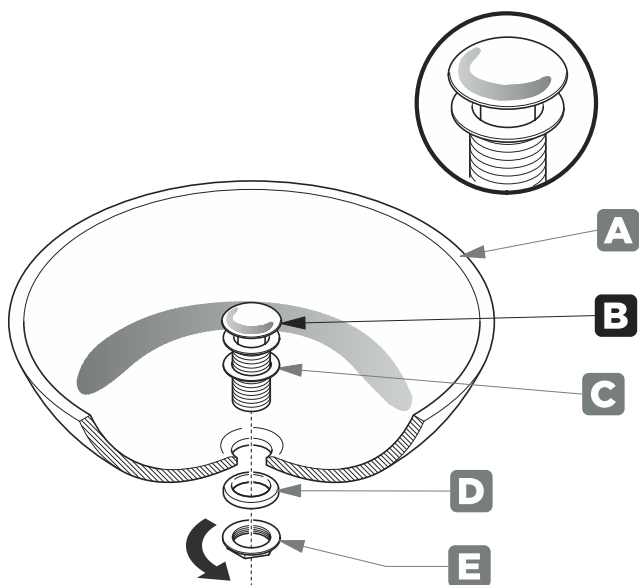
**NOTE:**

Your item may appear slightly different from the illustration.



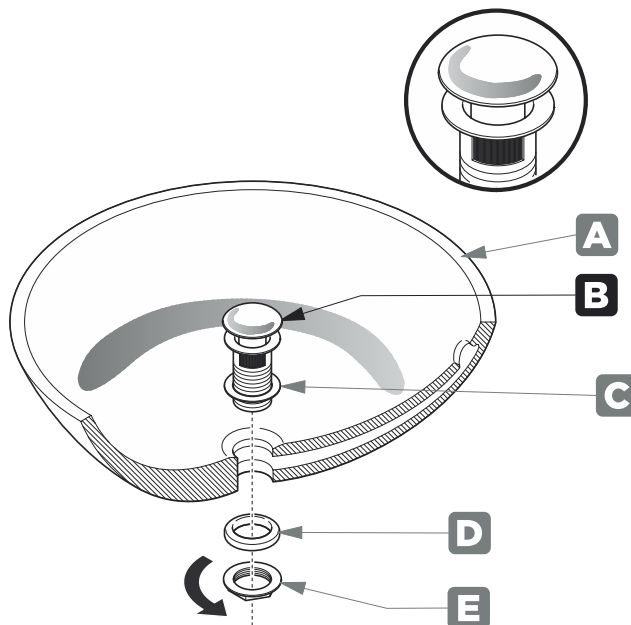
## POP-UP INSTALLATION INSTRUCTIONS

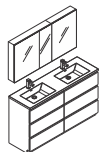
### FOR SINKS WITHOUT OVERFLOW



OR

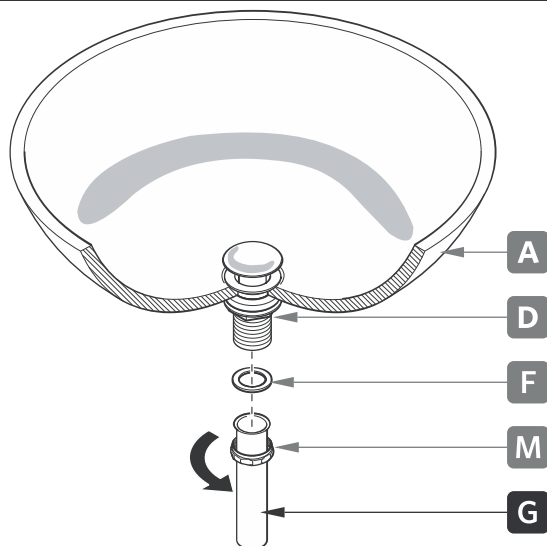
### FOR SINKS WITH OVERFLOW





## P-TRAP INSTALLATION

### 1 Install tail pipe (G)



### 2 Install p-trap (J)

