

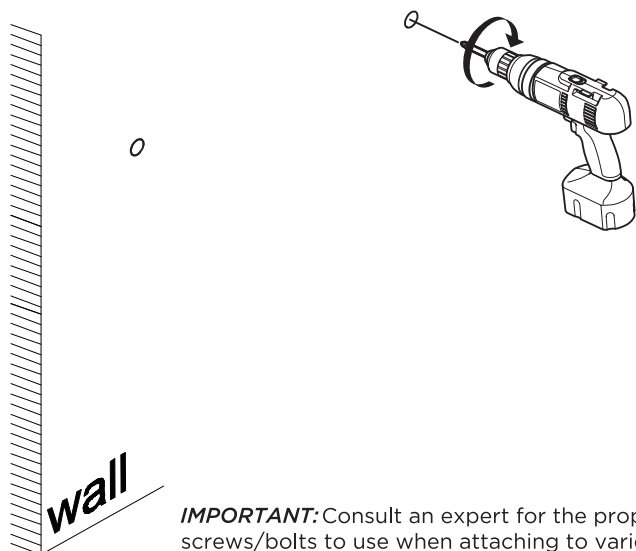
FVN9342 SENZA INSTALLATION GUIDE

|||kitchensource.com
1.800.667.8721



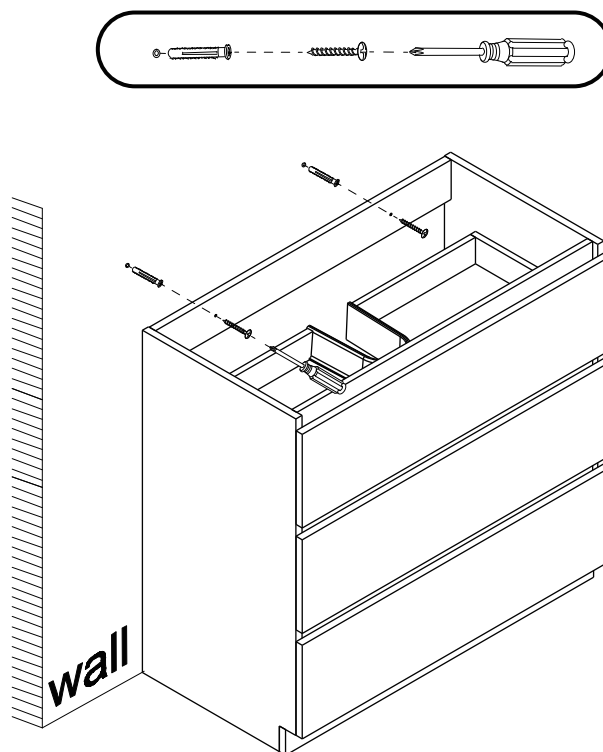
CABINET INSTALLATION

- 1** Drill holes and insert the dowels.

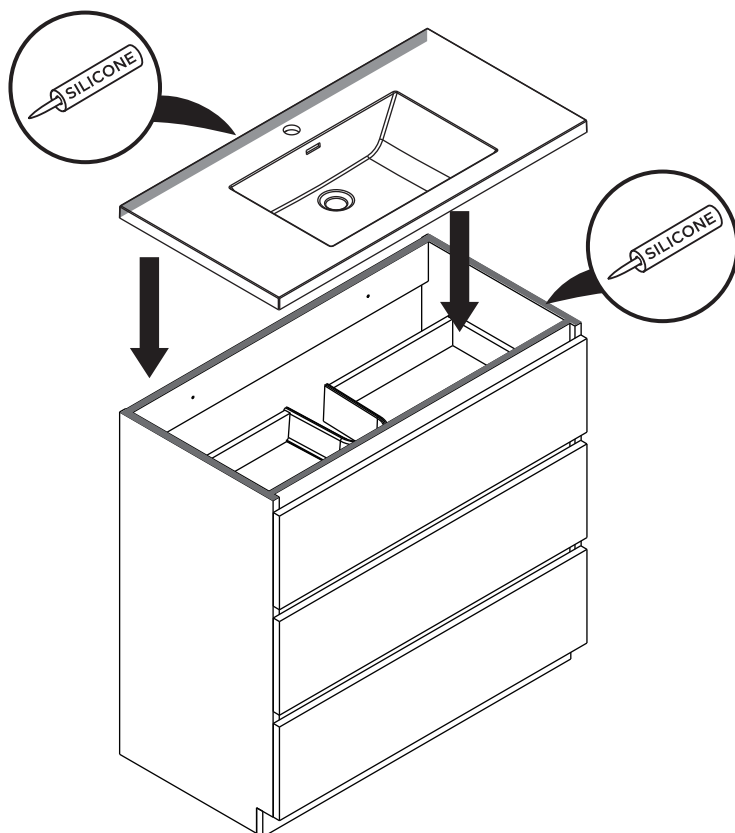


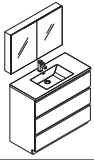
IMPORTANT: Consult an expert for the proper screws/bolts to use when attaching to various constructions. Screws provided do not attach to all wall construction types. Anchors are not required if brackets are installed in stud.

- 2** Mark anchor mounting hole locations on wall as shown. Drill holes in the finished wall as required.



- 3** Apply silicone and install sink.





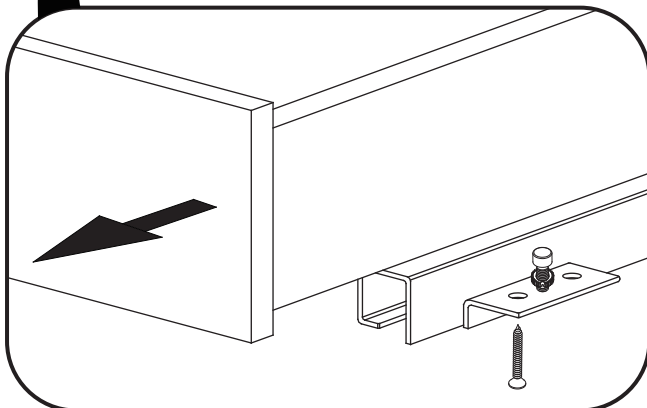
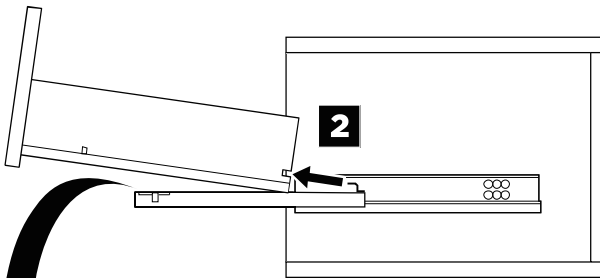
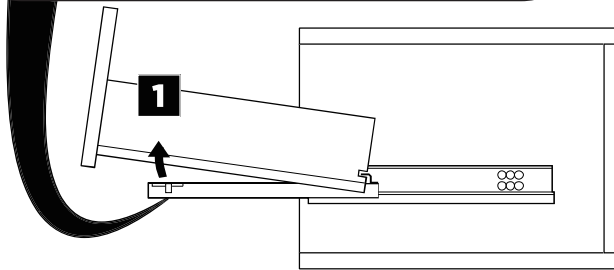
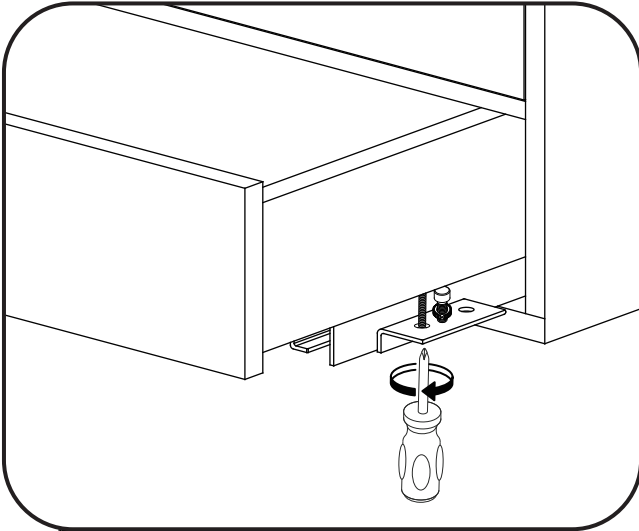
FVN9342 SENZA INSTALLATION GUIDE

|||kitchensource.com
1.800.667.8721

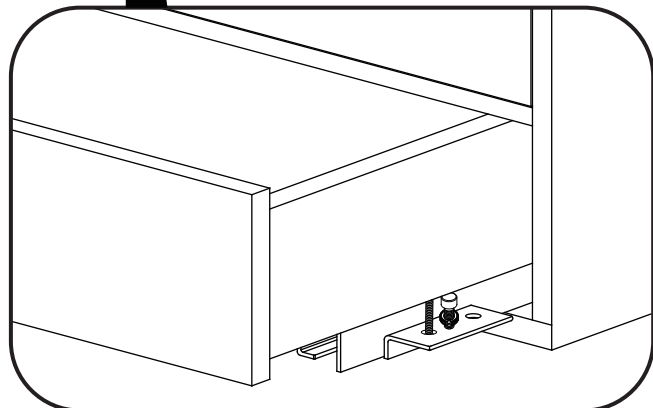
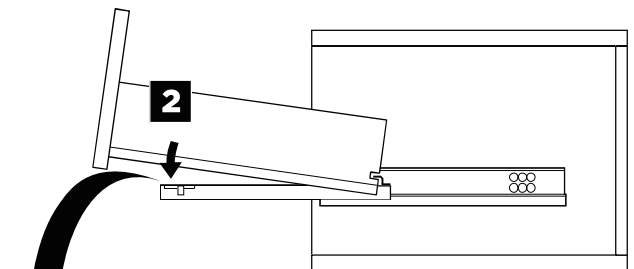
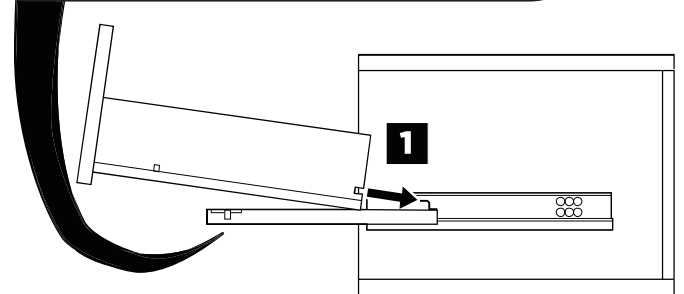
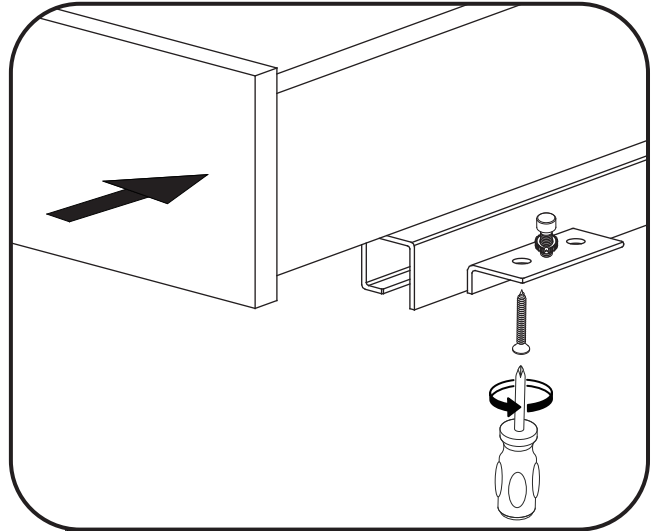


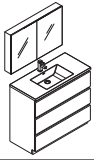
DRAWER REMOVAL & INSTALLATION

REMOVAL



INSTALLATION

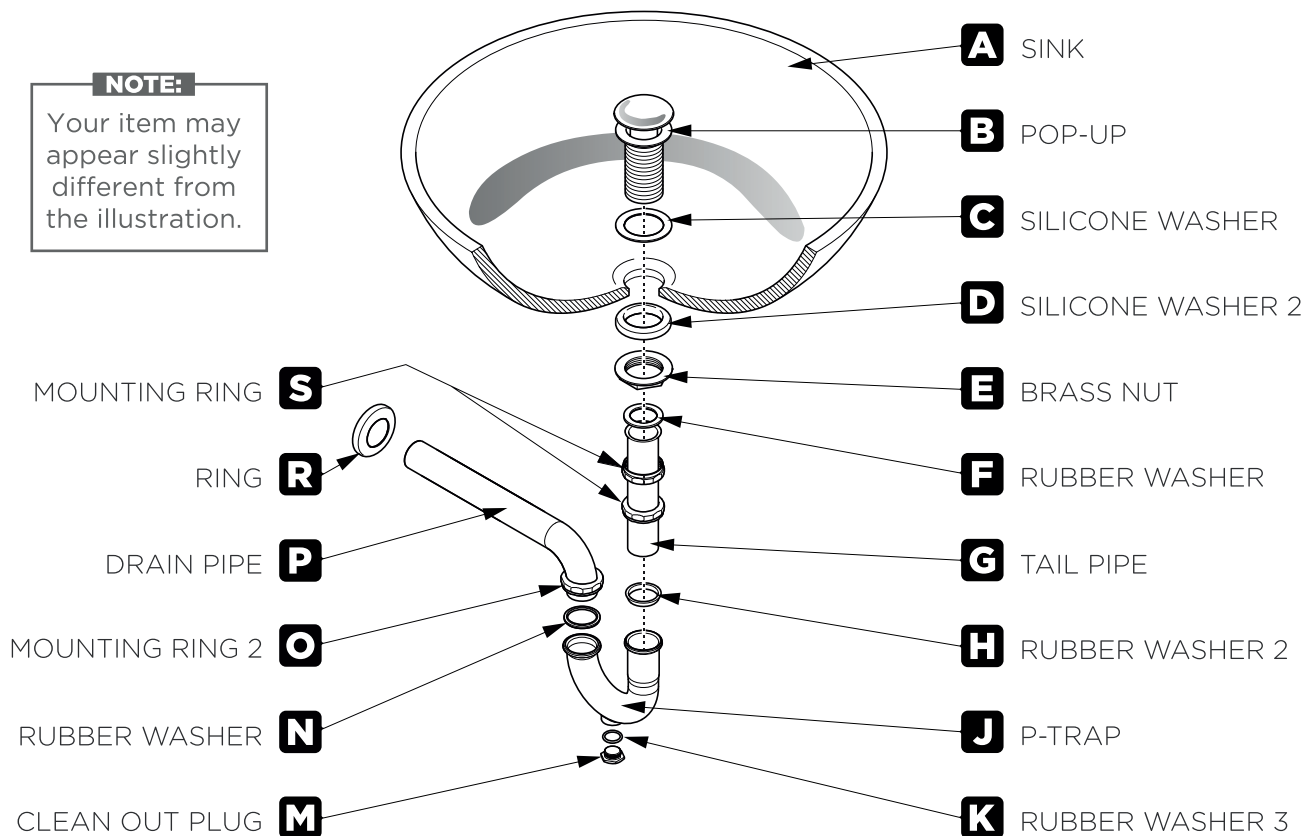




P-TRAP AND POP-UP INSTALLATION INSTRUCTIONS

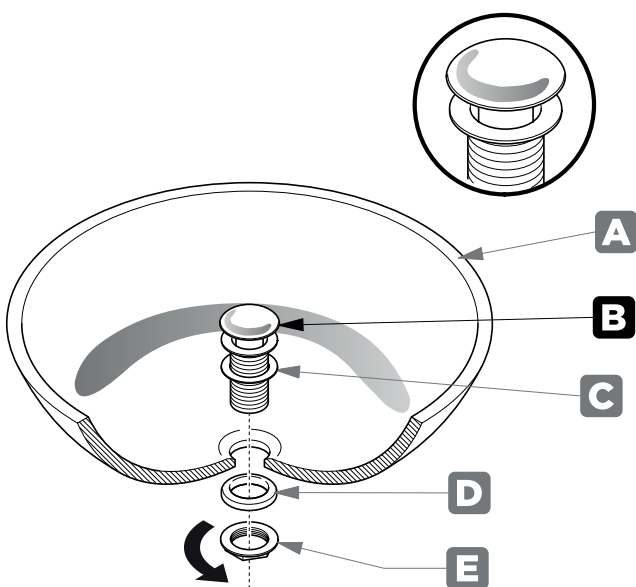
NOTE:

Your item may appear slightly different from the illustration.



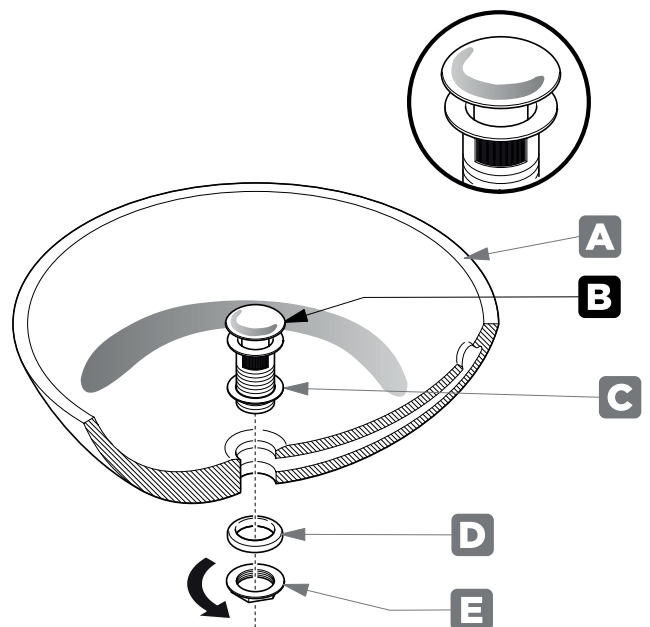
POP-UP INSTALLATION INSTRUCTIONS

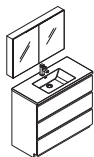
FOR SINKS WITHOUT OVERFLOW



OR

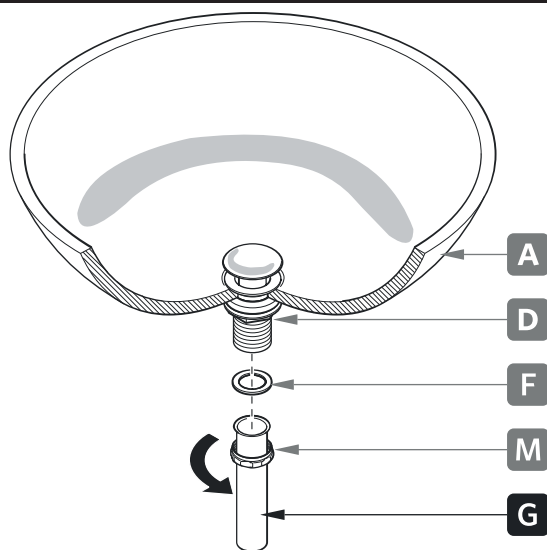
FOR SINKS WITH OVERFLOW





P-TRAP INSTALLATION

1 Install tail pipe (G)



2 Install p-trap (J)

