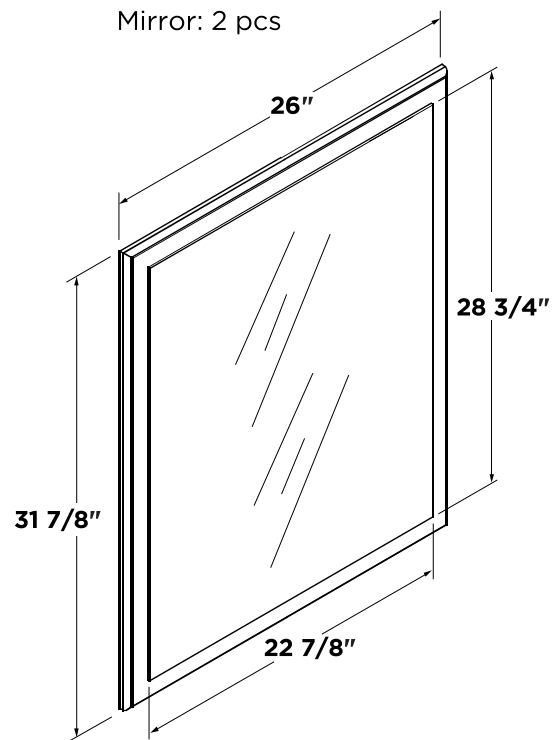
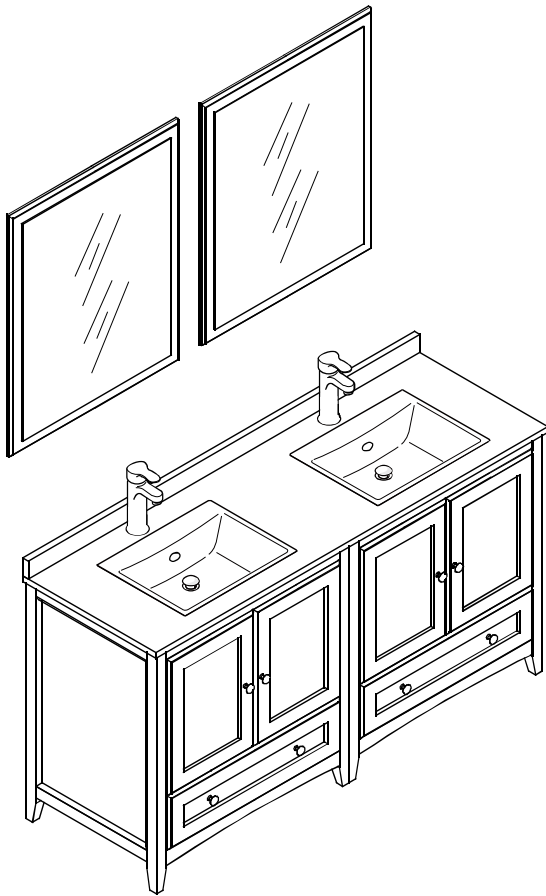


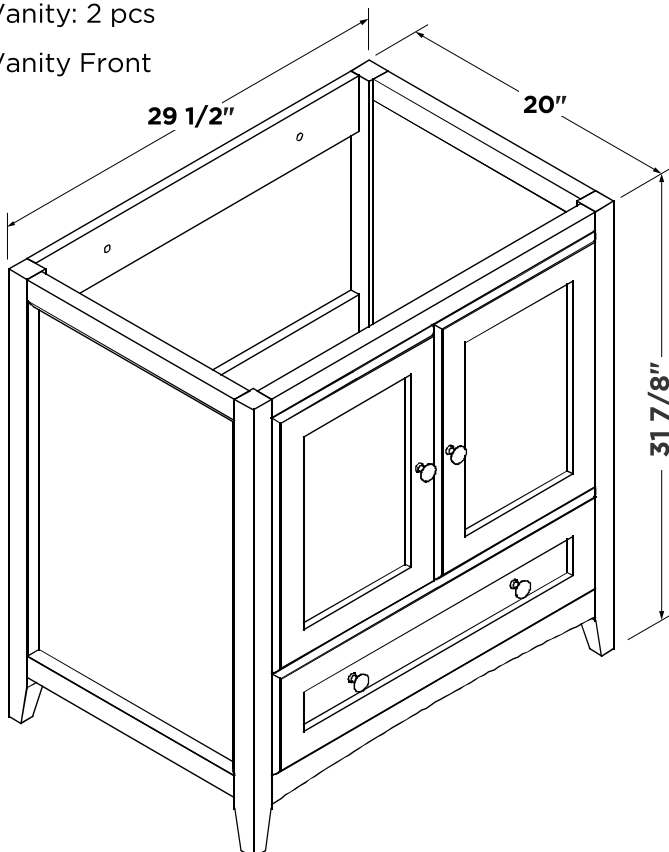
**FVN20-3030**  
**OXFORD**  
**INSTALLATION GUIDE**

**kitchensource.com**  
1.800.667.8721

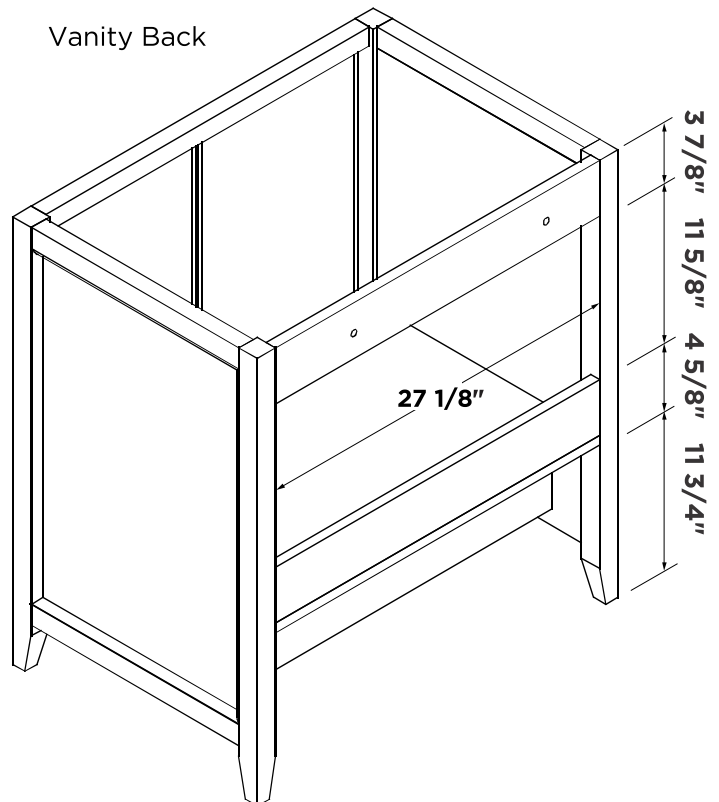
**FRESCA®**



Vanity: 2 pcs  
Vanity Front



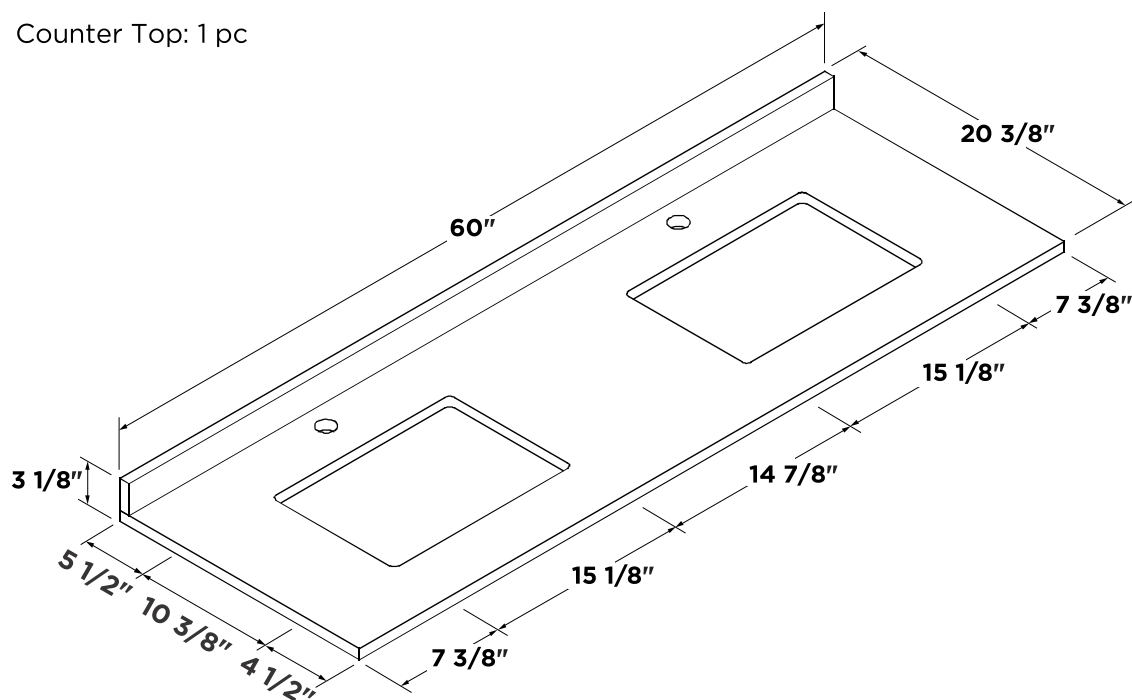
Vanity Back



**OXFORD INSTALLATION GUIDE**

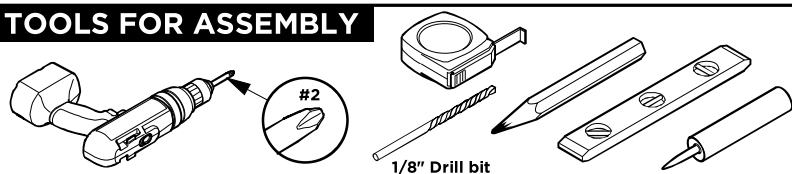
PAGE 1

Counter Top: 1 pc



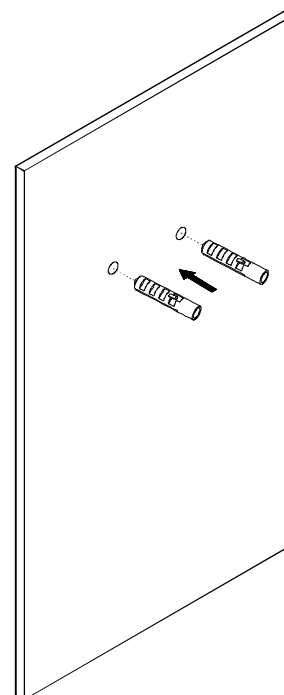
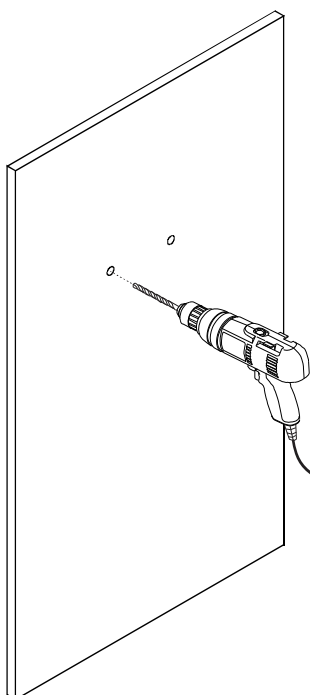
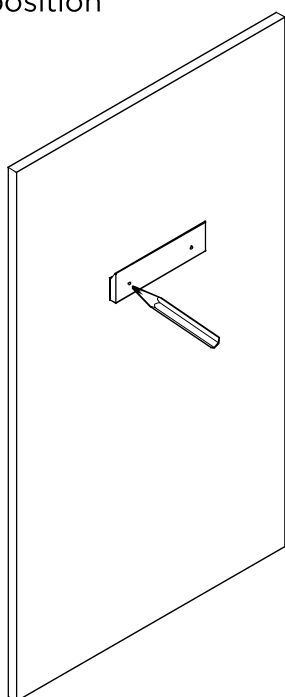
Note: All dimensions and specifications are approximate and subject to change without notice.

#### TOOLS FOR ASSEMBLY



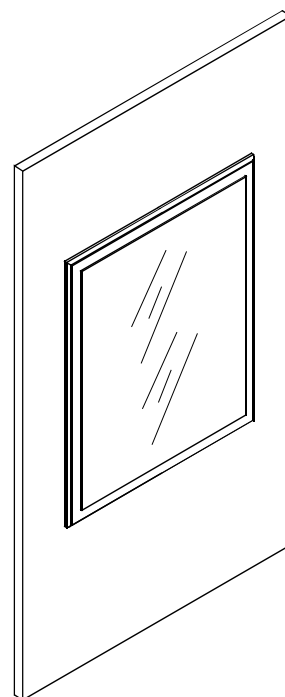
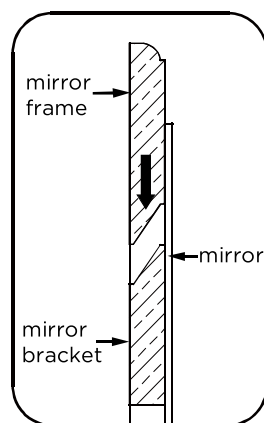
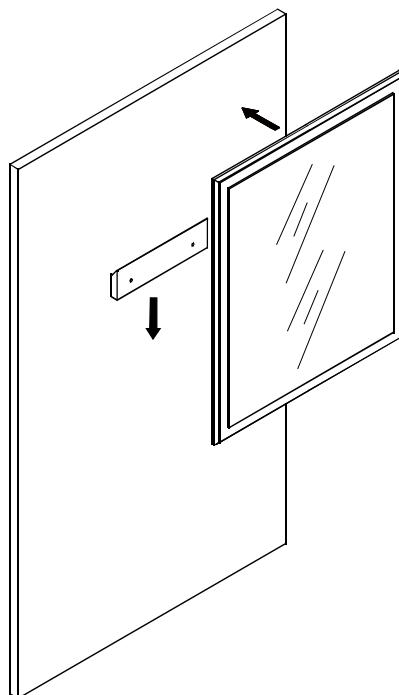
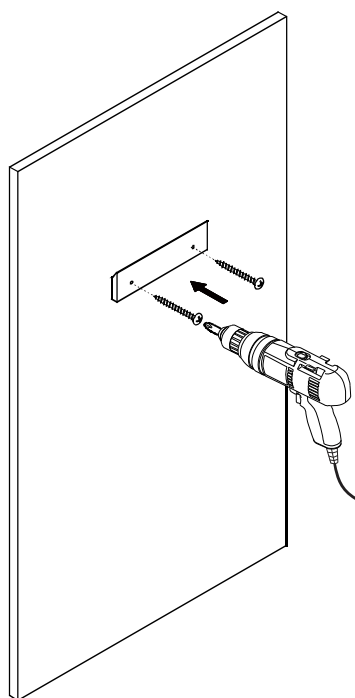
#### MIRROR INSTALLATION

- 1 Level the mirror bracket and then mark the installation position
- 2 Drill the installation holes
- 3 Insert the plastic plug



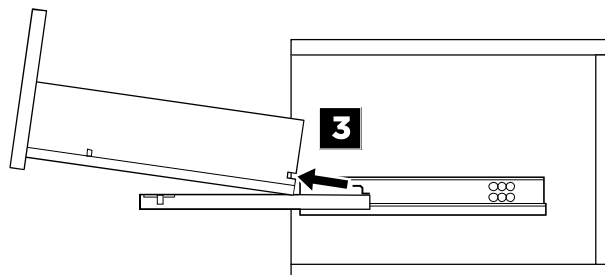
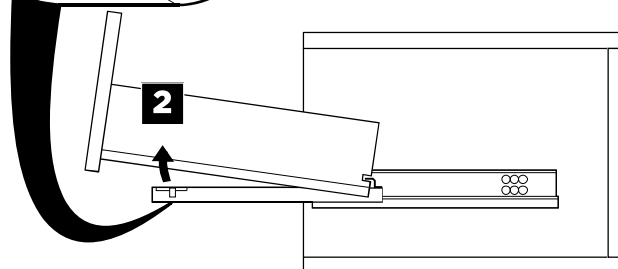
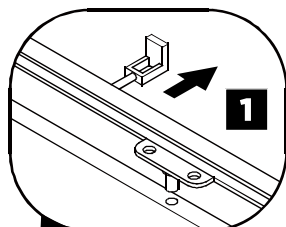
**4** Fix the mirror bracket

**5** Hang up the mirror

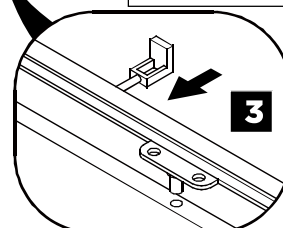
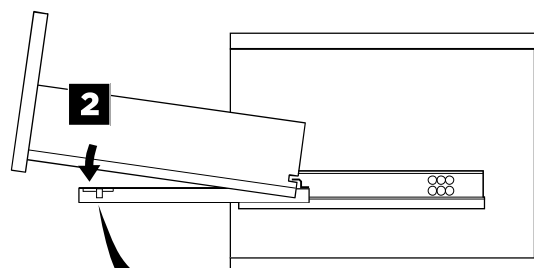
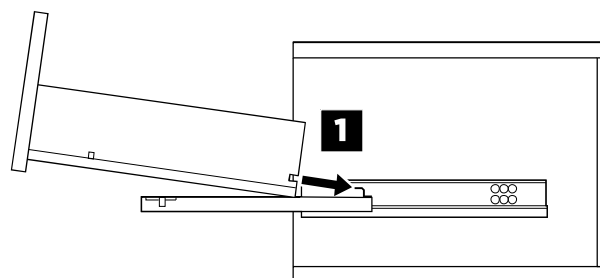


**DRAWER REMOVAL & INSTALLATION**

**REMOVAL**

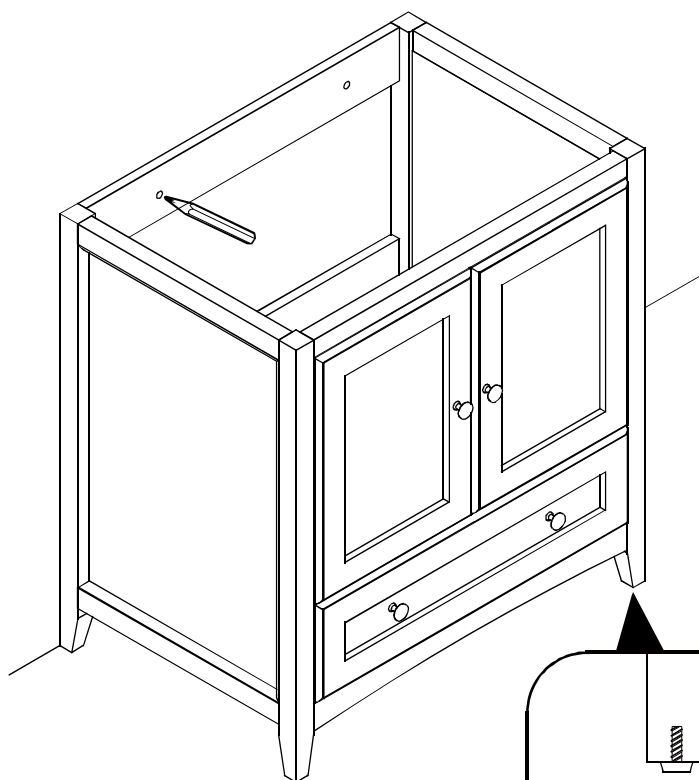


**INSTALLATION**



1

Level the cabinet and mark the installation position

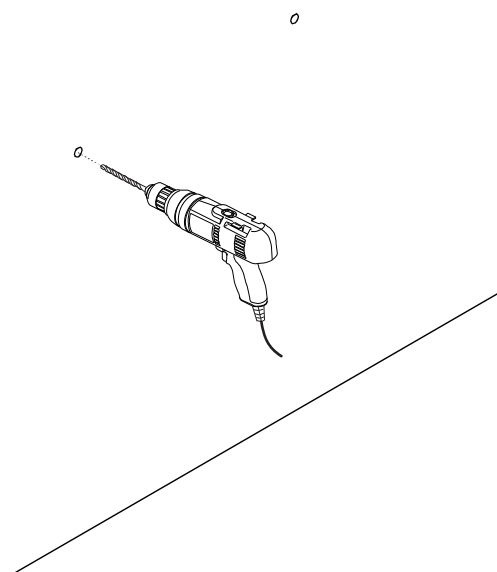


Adjust the adjustable level to ensure the cabinet stable

OPTIONAL STEP

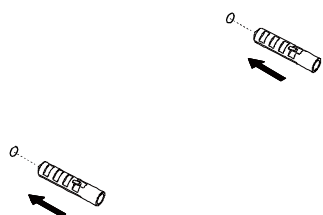
2

Drill the installing holes



3

Insert the expansible plastic plugs

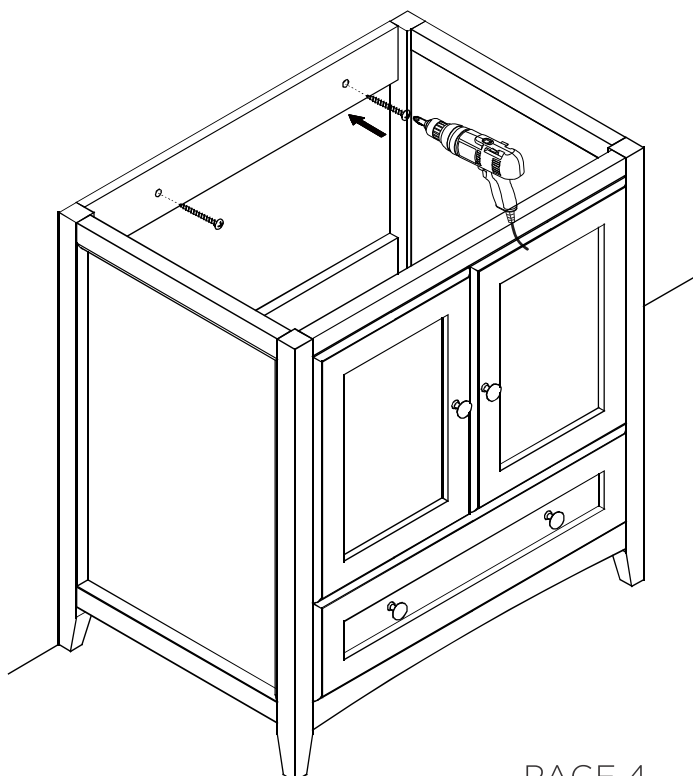


4

Install cabinet

**IMPORTANT:**

Consult an expert for the proper screws/bolts to use when attaching to various wall constructions. Screws provided do not attach to all wall construction types.

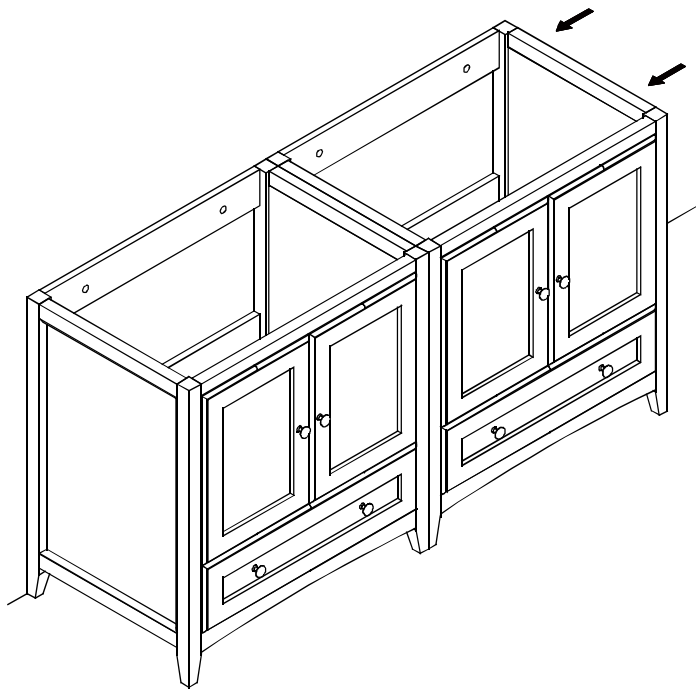


OXFORD INSTALLATION GUIDE

PAGE 4

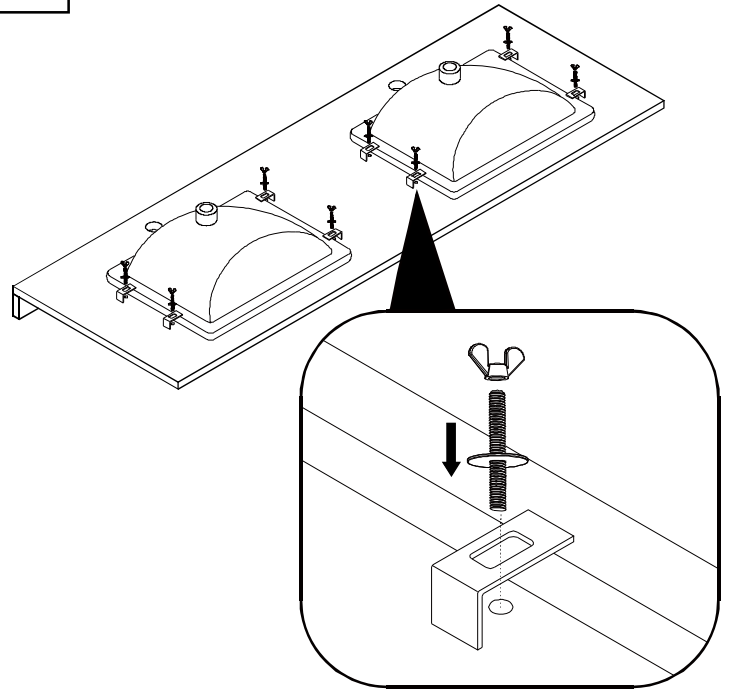
**5**

**Align and repeat the cabinet installation**



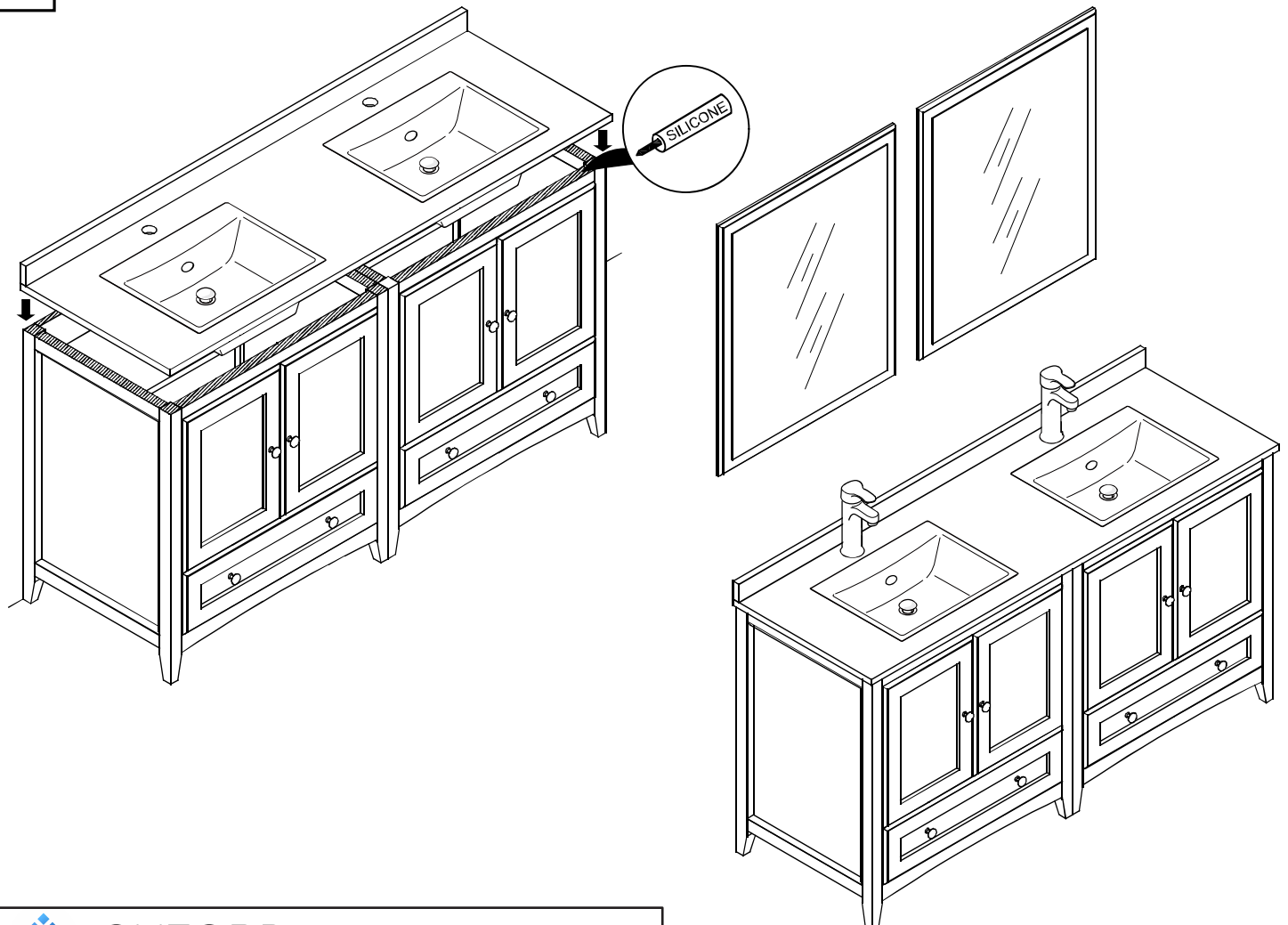
**6**

**Install sink**



**7**

**Install counter top**

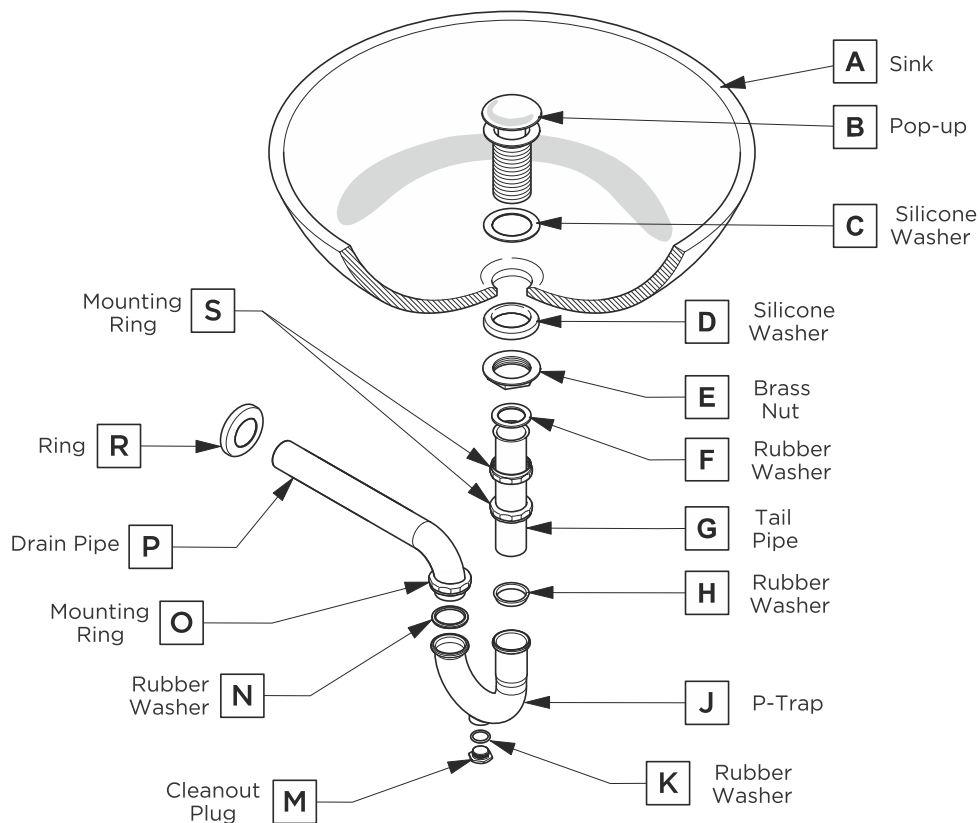


**OXFORD INSTALLATION GUIDE**

PAGE 5

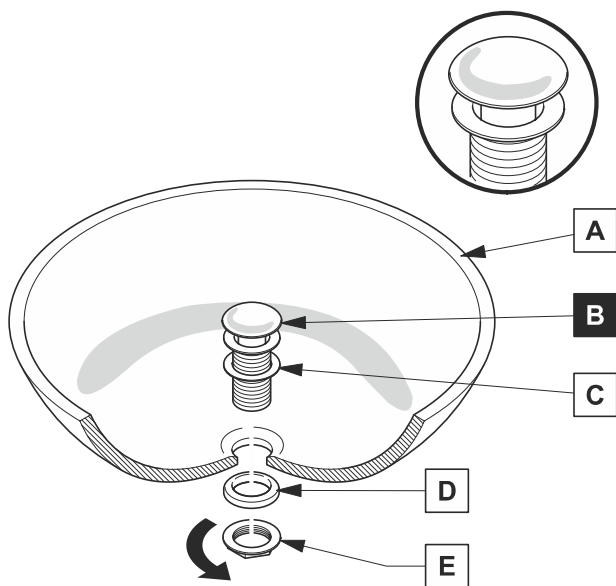
## P-TRAP AND POP-UP INSTALLATION INSTRUCTIONS

Your item may appear slightly different from the illustration



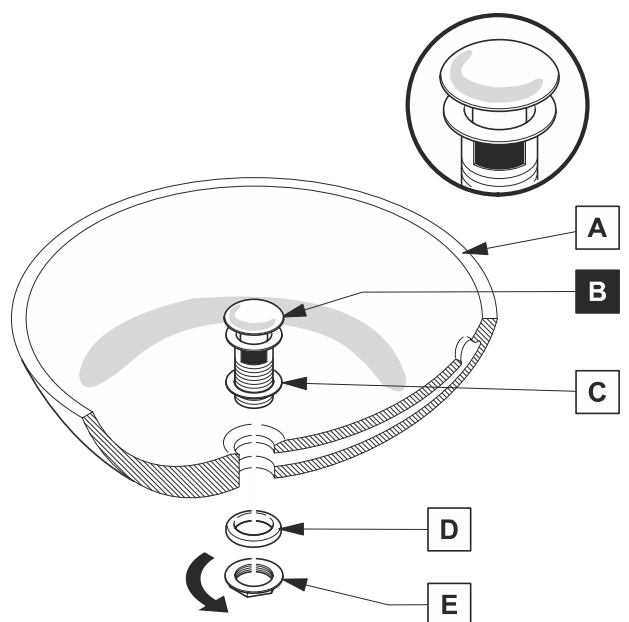
### POP-UP INSTALLATION

#### FOR SINKS WITHOUT OVERFLOW



OR

#### FOR SINKS WITH OVERFLOW



## 1

Diagram illustrating the assembly process for the bottom of the bowl:

- A**: The bottom of the bowl.
- D**: The bolt being inserted into the hole.
- F**: The washer being placed over the bolt.
- M**: The nut being threaded onto the bolt.
- G**: The cap being placed over the nut.

## 2