



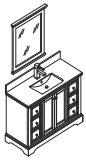
# WINDSOR

## INSTALLATION GUIDE

### FVN2448

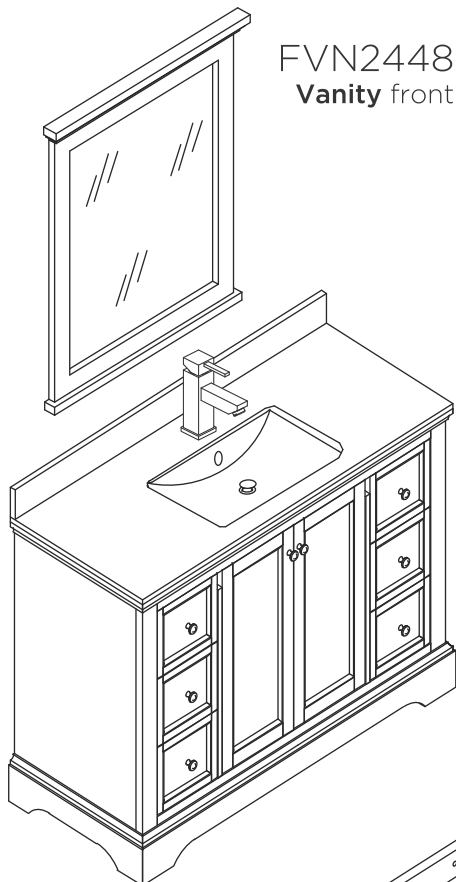
## CONTENTS:

Mirror .....	FMR2430 .....	PAGE <b>2</b>
Cabinet .....	FCB2448 .....	PAGE <b>3</b>
Sink .....	FCT2048WH-S-CMB .....	PAGE <b>3</b>

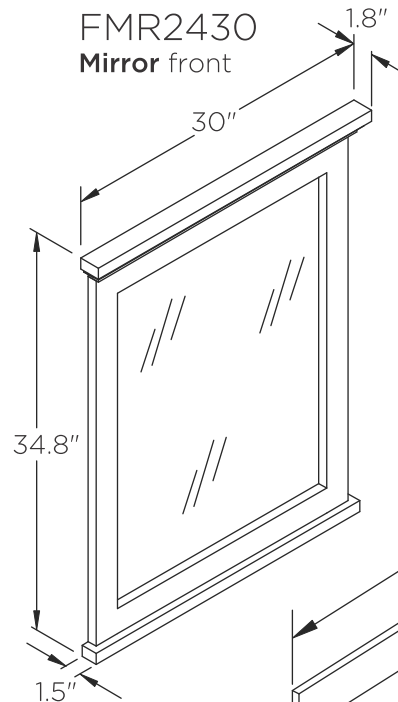


# FVN2448 WINDSOR INSTALLATION GUIDE

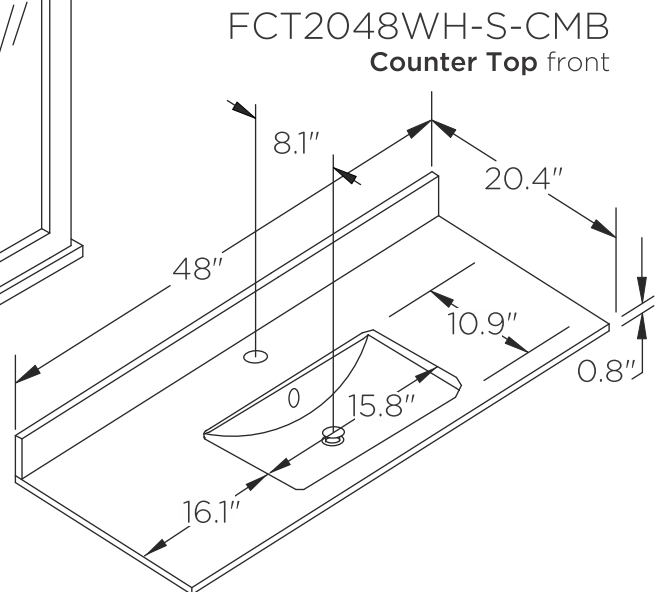
**kitchensource.com**  
1.800.667.8721



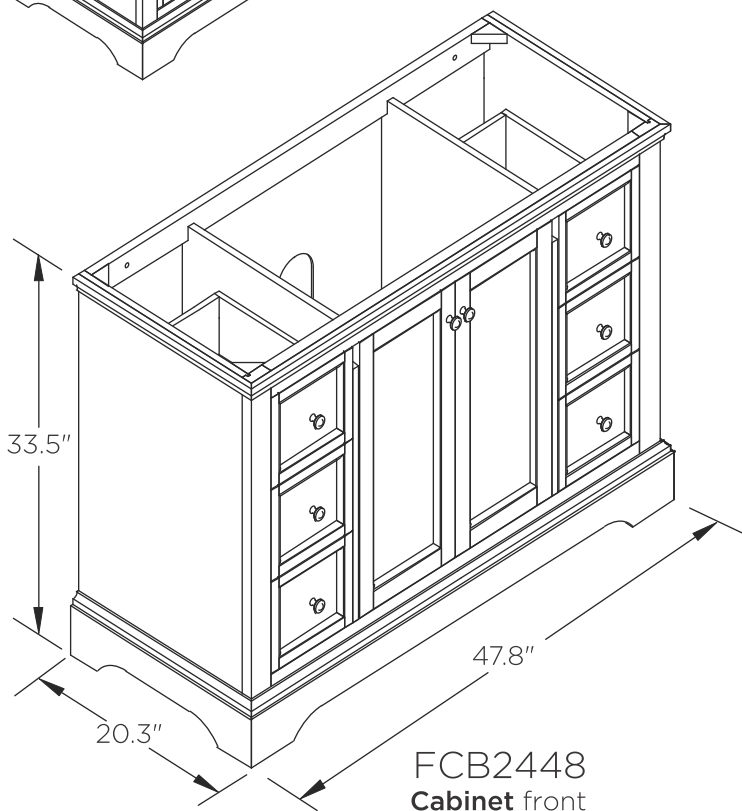
FVN2448  
Vanity front



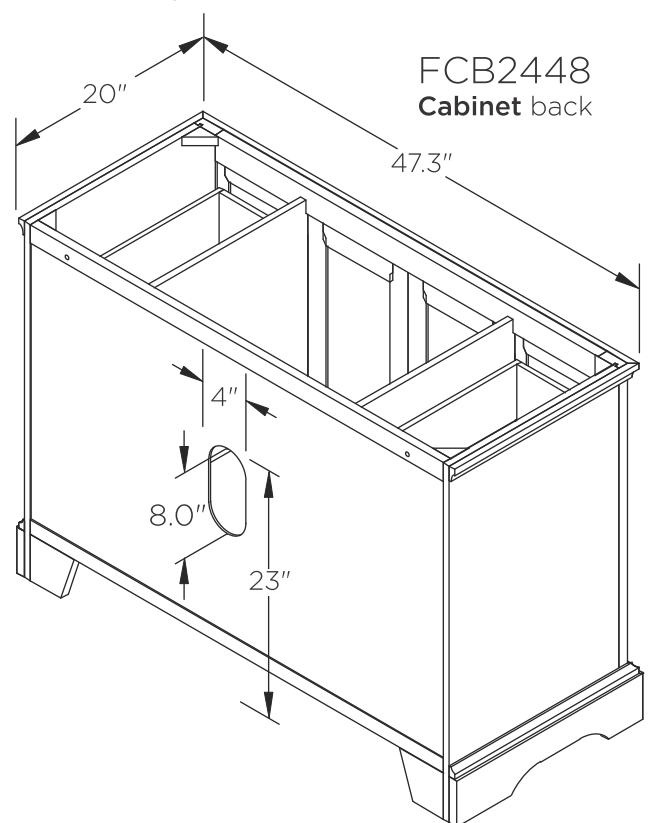
FMR2430  
Mirror front



FCT2048WH-S-CMB  
Counter Top front



FCB2448  
Cabinet front



FCB2448  
Cabinet back

**NOTE:** All dimensions & specifications are approximate and subject to change without notice.

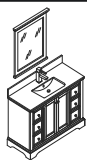


**FVN2448**

**WINDSOR**

**INSTALLATION GUIDE**

PAGE 1

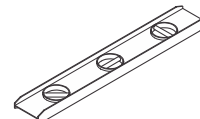
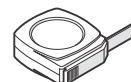
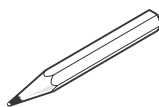
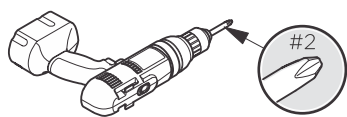


# FVN2448 WINDSOR INSTALLATION GUIDE

**kitchensource.com**  
1.800.667.8721

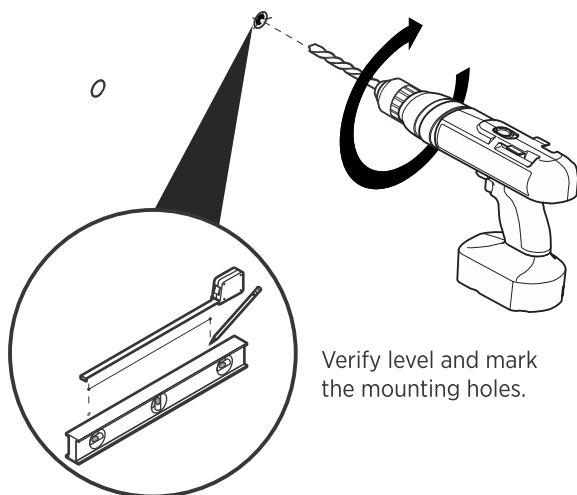


## TOOLS FOR ASSEMBLY



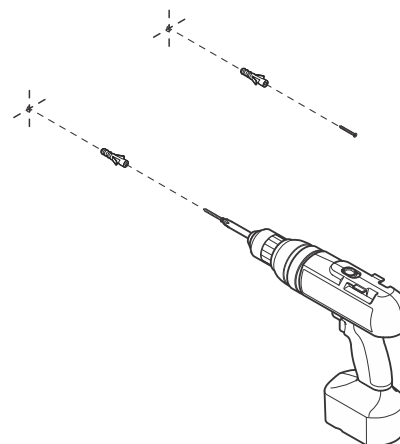
## MIRROR INSTALLATION

- 1 Measure distance between the holes and mark it on the wall using a level.



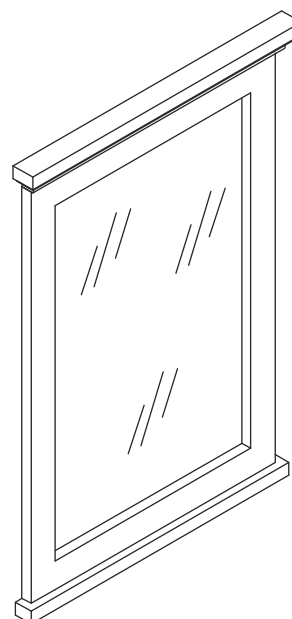
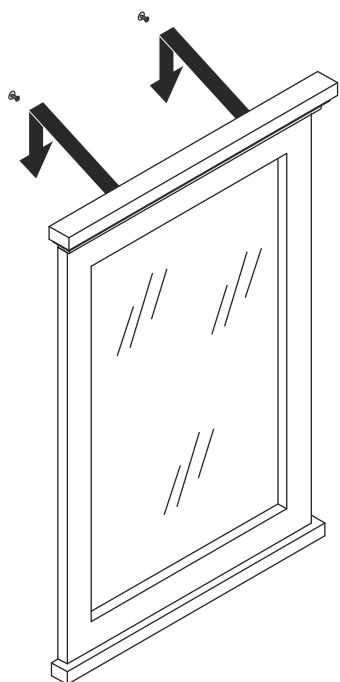
Verify level and mark the mounting holes.

- 2 Press the anchors into the holes.



**IMPORTANT:** Consult an expert for the proper screws/bolts to use when attaching to various constructions. Screws provided do not attach to all wall construction types. Anchors are not required if brackets are installed in stud.

- 3 Hang mirror on the screws.

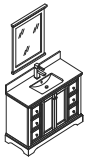


**FVN2448**

**WINDSOR**

**INSTALLATION GUIDE**

PAGE 2



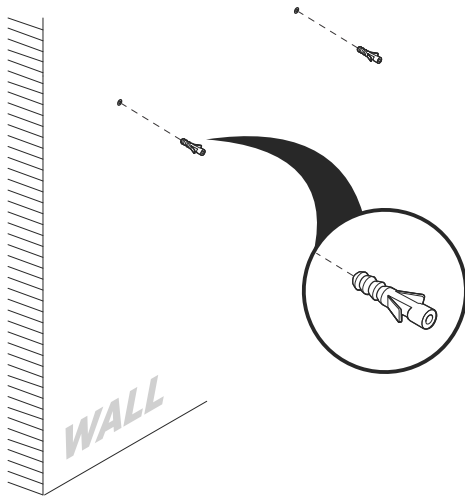
# FVN2448 WINDSOR INSTALLATION GUIDE

**kitchensource.com**  
1.800.667.8721



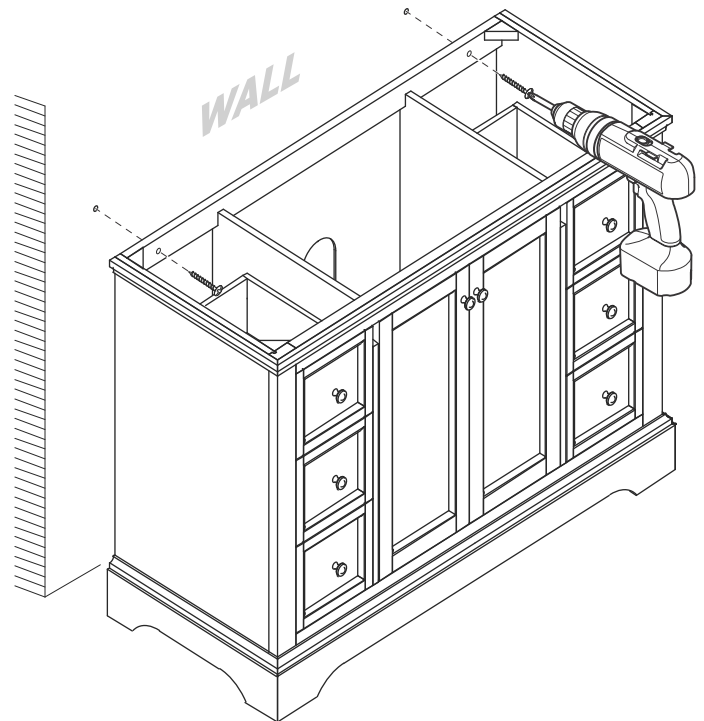
## CABINET INSTALLATION

- 1** Drill holes in the wall and insert the anchors.

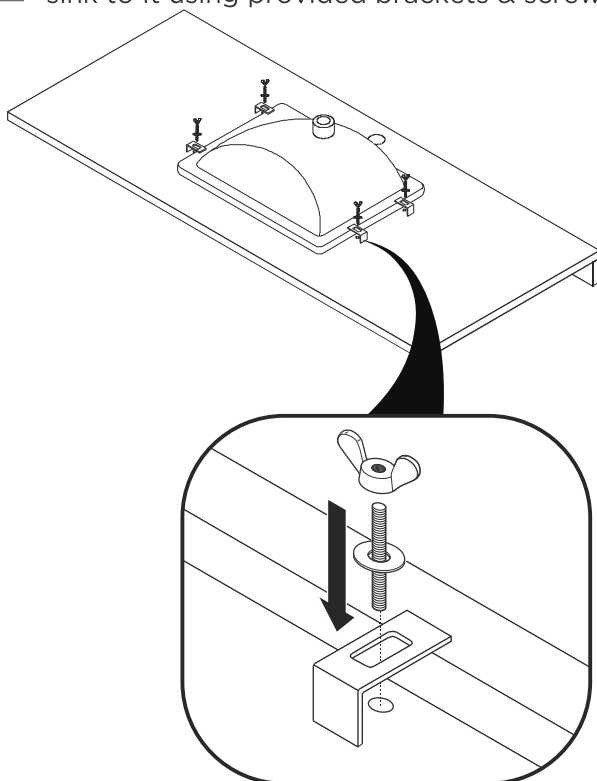


**IMPORTANT:** Consult an expert for the proper screws/bolts to use when attaching to various constructions. Screws provided do not attach to all wall construction types. Anchors are not required if brackets are installed in stud.

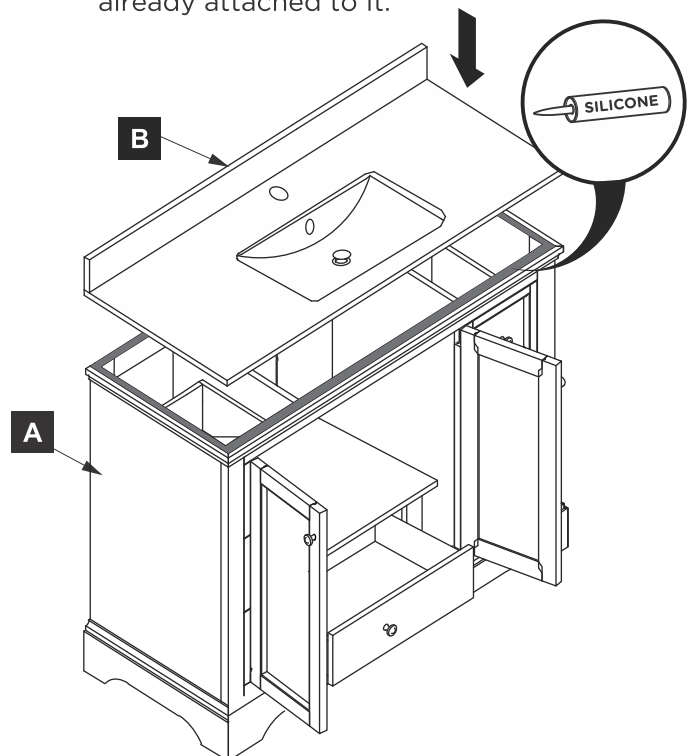
- 2** Mark anchor mounting hole locations on the wall as shown.



- 3** Flip counter top upside down and attach sink to it using provided brackets & screws.



- 4** Apply silicone to the top of the cabinet (A) and place counter top with sink (B) already attached to it.

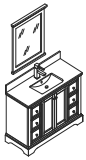


**FVN2448**

**WINDSOR**

**INSTALLATION GUIDE**

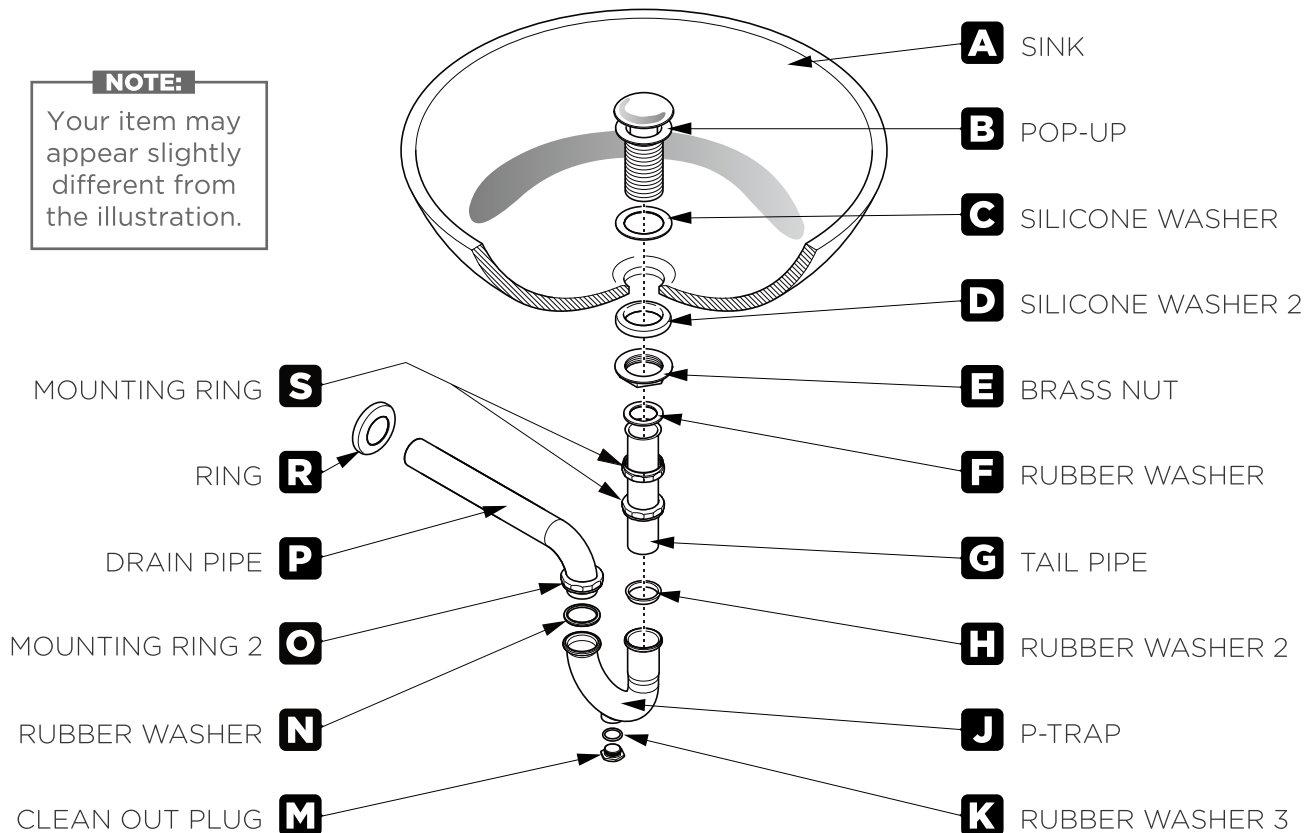
PAGE 3



## P-TRAP & POP-UP INSTALLATION INSTRUCTIONS

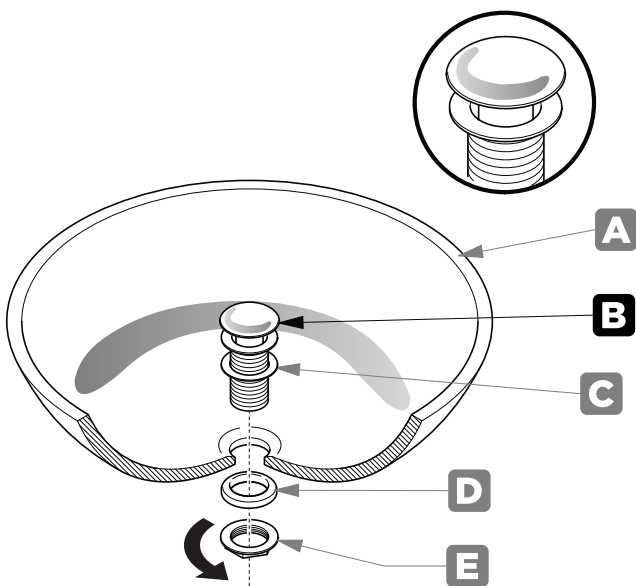
**NOTE:**

Your item may appear slightly different from the illustration.



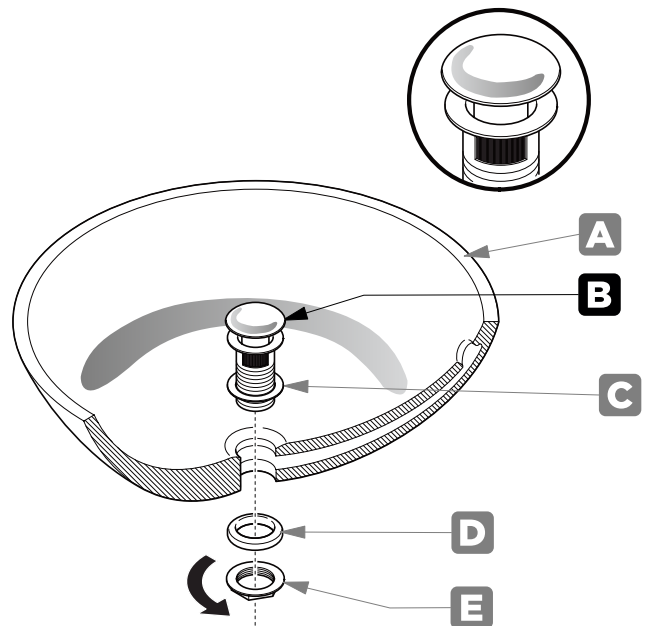
## POP-UP INSTALLATION INSTRUCTIONS

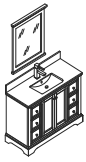
### FOR SINKS WITHOUT OVERFLOW



OR

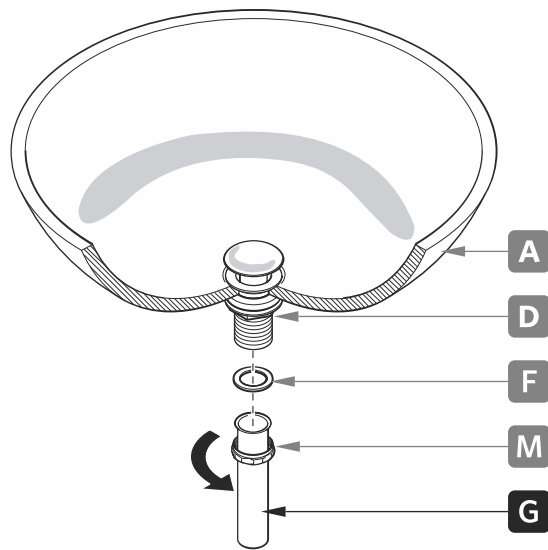
### FOR SINKS WITH OVERFLOW





## P-TRAP INSTALLATION

### 1 Install tail pipe (G)



### 2 Install p-trap (J)

