



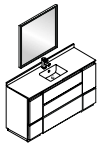
FORMOSA

INSTALLATION GUIDE

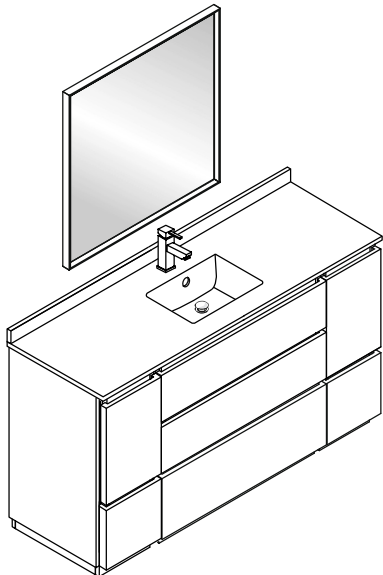
FVN31-123612ACA-FC

CONTENTS:

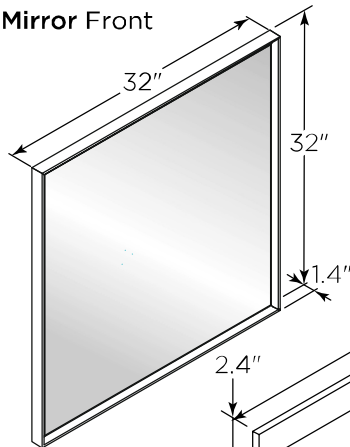
Mirror	FMR3132ACA	PAGE 2
Cabinet	FCB3136ACA	PAGE 3
Sink	FCT2060WH-S-CMB	PAGE 3



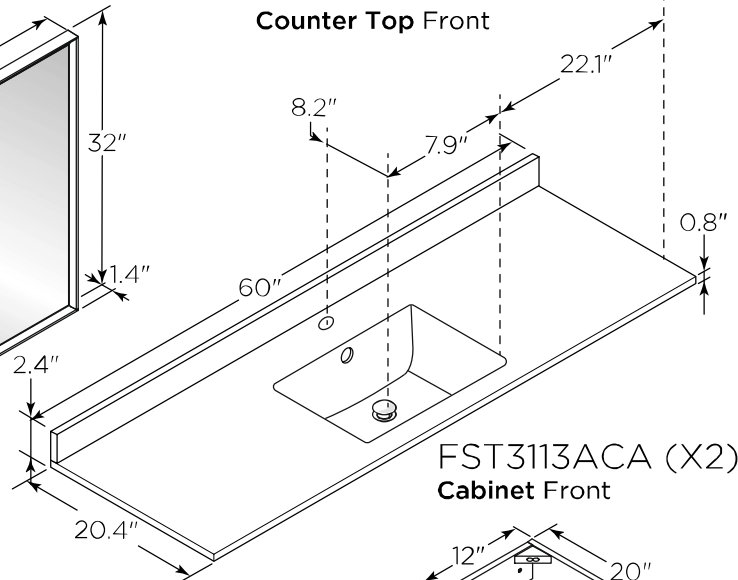
FVN31-123612ACA-FC
Vanity Front



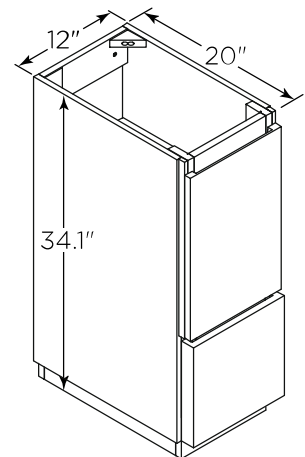
FMR3132ACA
Mirror Front



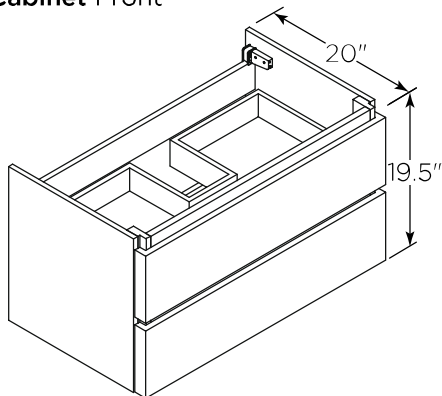
FCT2060WH-S-CMB
Counter Top Front



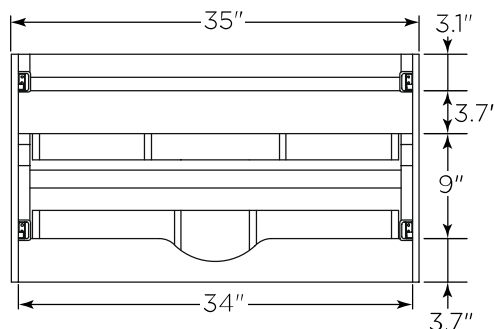
FST3113ACA (X2)
Cabinet Front



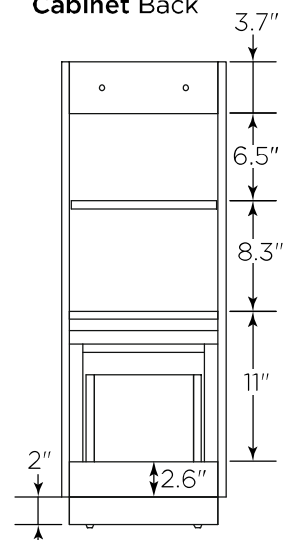
FCB3136ACA
Cabinet Front



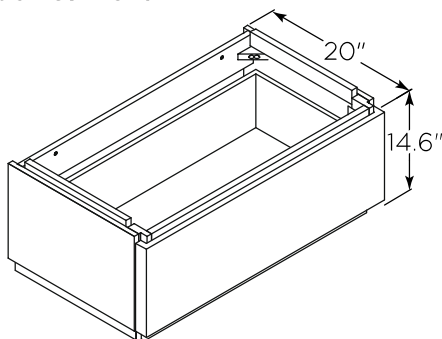
FCB3136ACA
Cabinet Back



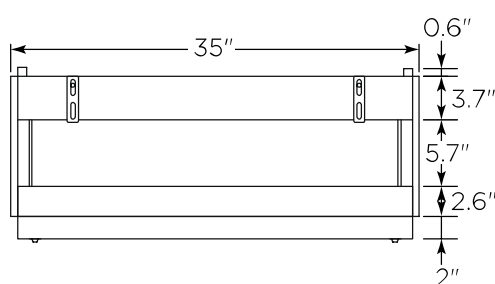
FST3113ACA
Cabinet Back



FCB3137ACA
Cabinet Front

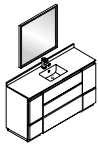


FCB3137ACA
Cabinet Back

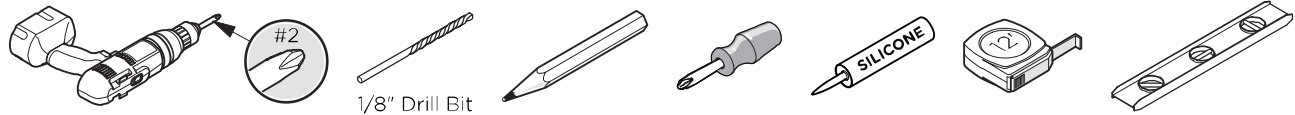


NOTE: All dimensions & specifications are approximate and subject to change without notice.



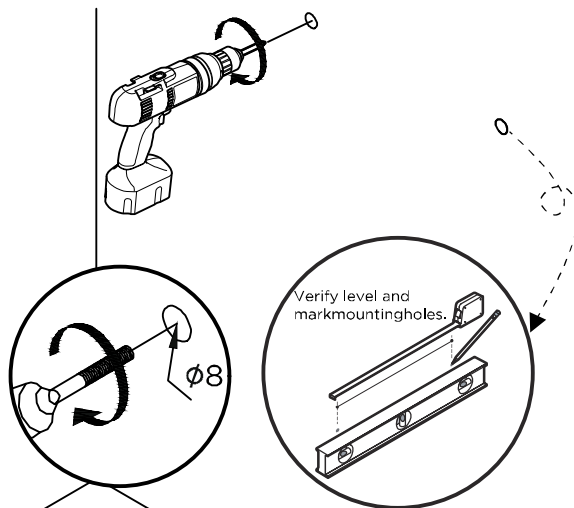


TOOLS FOR ASSEMBLY

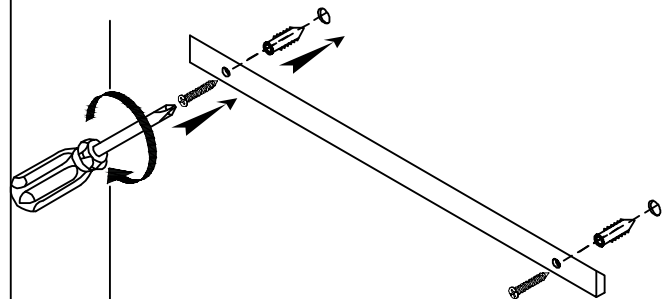


MIRROR INSTALLATION

- 1** Measure distance between the holes and mark it on the wall using a level.

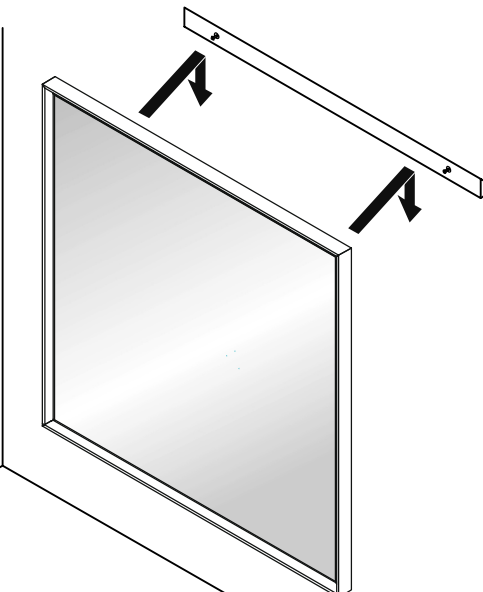


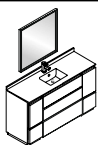
- 2** Press the anchors into the holes.



IMPORTANT: Consult an expert for the proper screws/bolts to use when attaching to various constructions. Screws provided do not attach to all wall construction types. Anchors are not required if brackets are installed in stud.

- 3** Hang mirror on the screws.

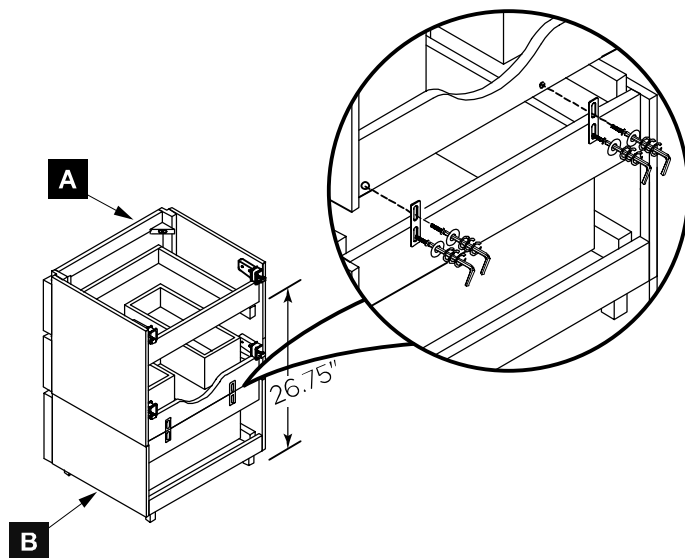




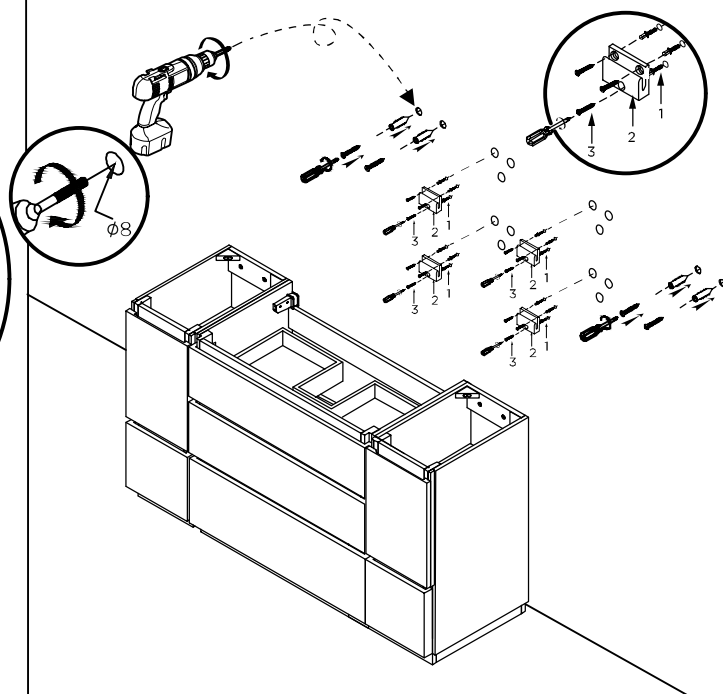
CABINET AND SINK INSTALLATION

- 1** Connect cabinet (A) to cabinet (B) with iron sheet.

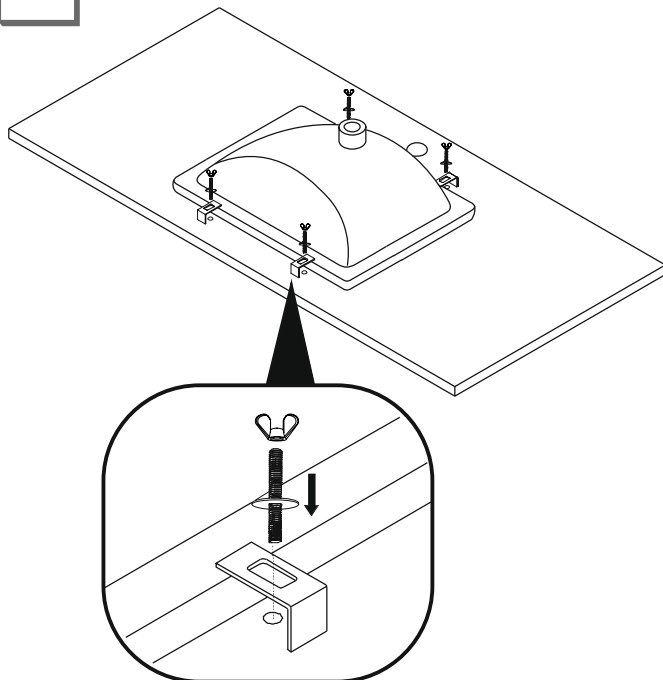
IMPORTANT: Consult an expert for the proper screws/bolts to use when attaching to various constructions. Screws provided do not attach to all wall construction types. Anchors are not required if brackets are installed in stud.



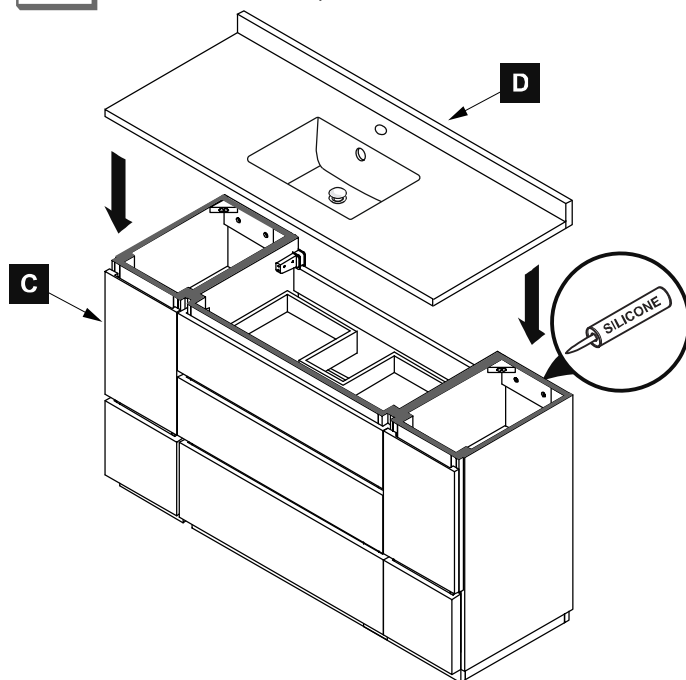
- 2** Mark anchor mounting hole locations on wall as shown. Drill holes in the finished wall as required. Then insert the anchor(1) into the holes and secure the wall bracket(2) with the screws(3).

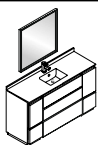


- 3** Install sink.



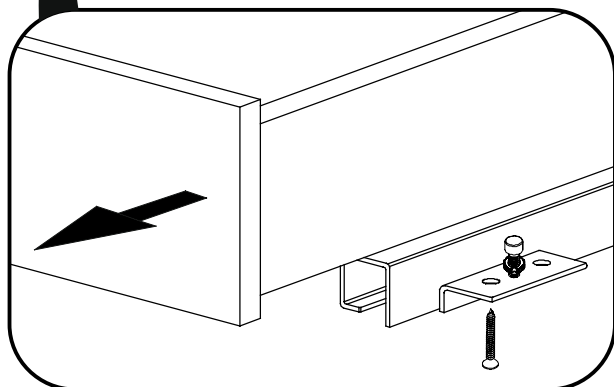
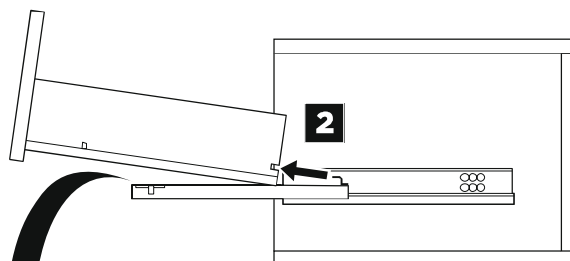
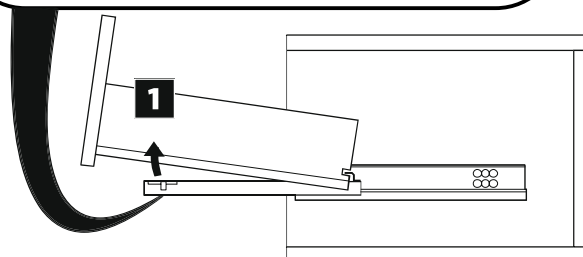
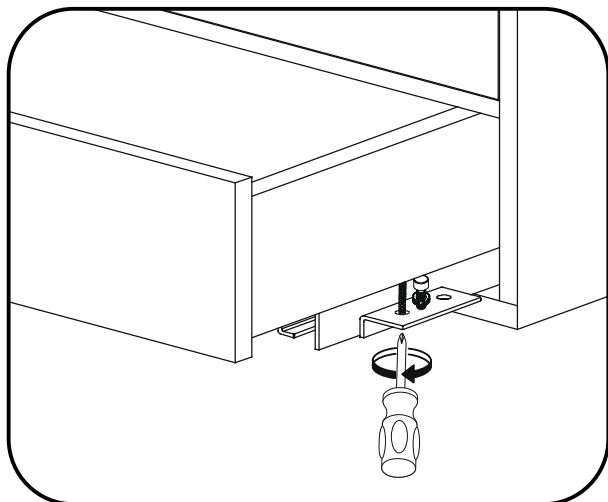
- 4** Apply a bead of silicone on the top of the cabinet (C) and place sink (D) on the cabinet.



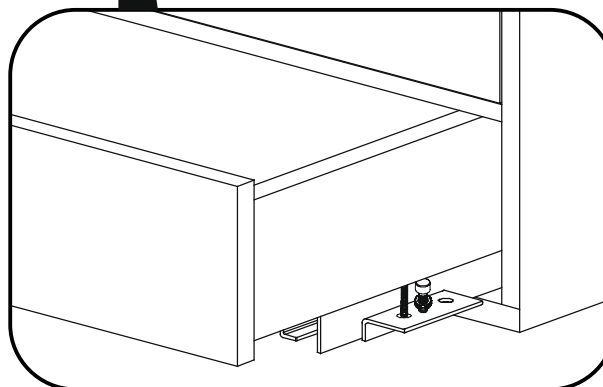
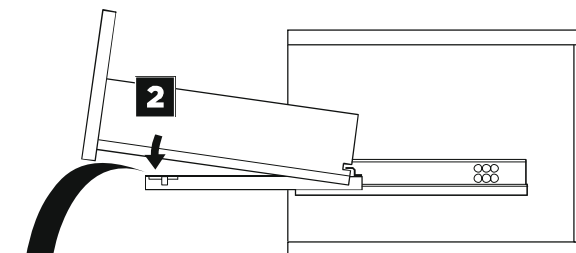
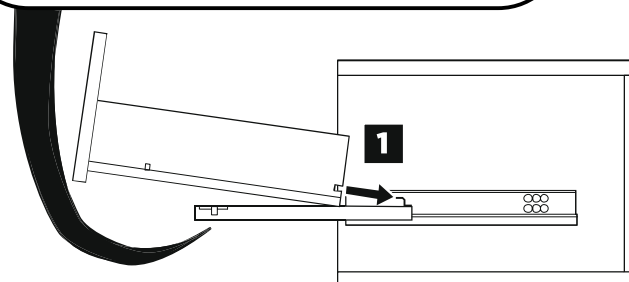
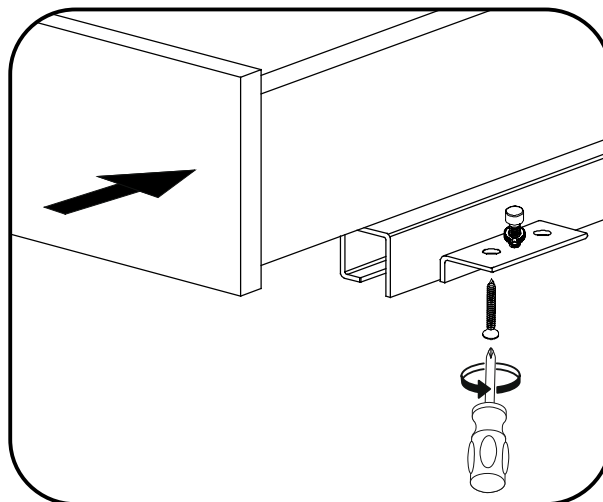


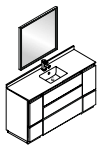
DRAWER REMOVAL & INSTALLATION

REMOVAL



INSTALLATION

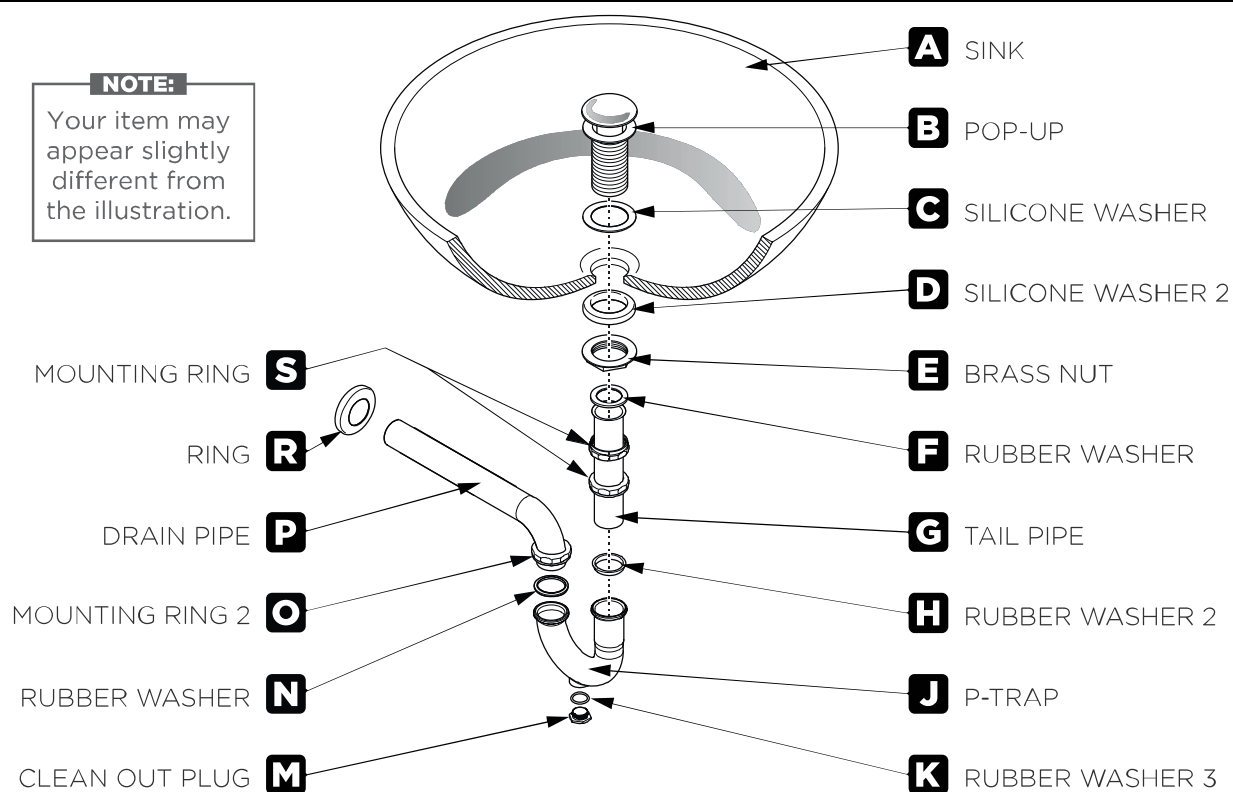




P-TRAP AND POP-UP INSTALLATION INSTRUCTIONS

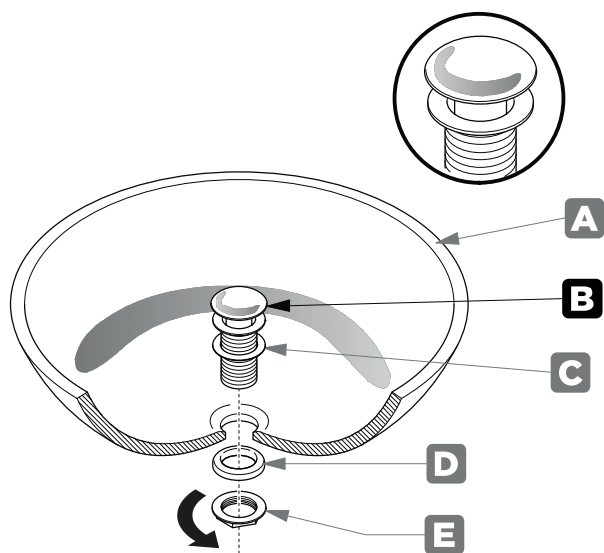
NOTE:

Your item may appear slightly different from the illustration.



POP-UP INSTALLATION INSTRUCTIONS

FOR SINKS WITHOUT OVERFLOW



OR

FOR SINKS WITH OVERFLOW

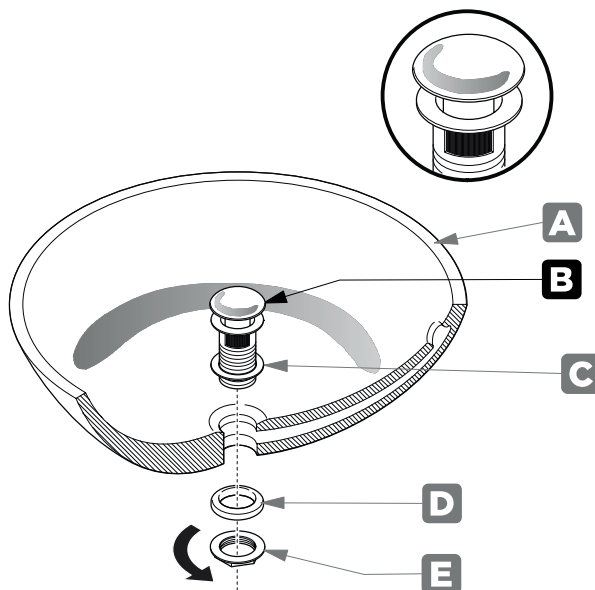




Diagram illustrating the assembly process for the bottom of a bowl. The components are labeled as follows:

- A**: Threaded cap
- D**: Washer
- F**: Ring
- M**: Tube
- G**: Gasket

The diagram shows the bowl with a central hole. The threaded cap (A) is inserted into the hole. The washer (D) is placed over the cap. The ring (F) is placed over the washer. The tube (M) is inserted into the hole, and the gasket (G) is placed over the tube. A curved arrow indicates the direction of rotation for the tube.

Install p-trap (J)