



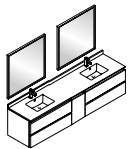
FORMOSA

INSTALLATION GUIDE

FVN31-361236ACA

CONTENTS:

Mirror	FMR3132ACA	PAGE 2
Cabinet	FCB3136ACA	PAGE 3
Sink	FCT2084WH-D-CMB	PAGE 3

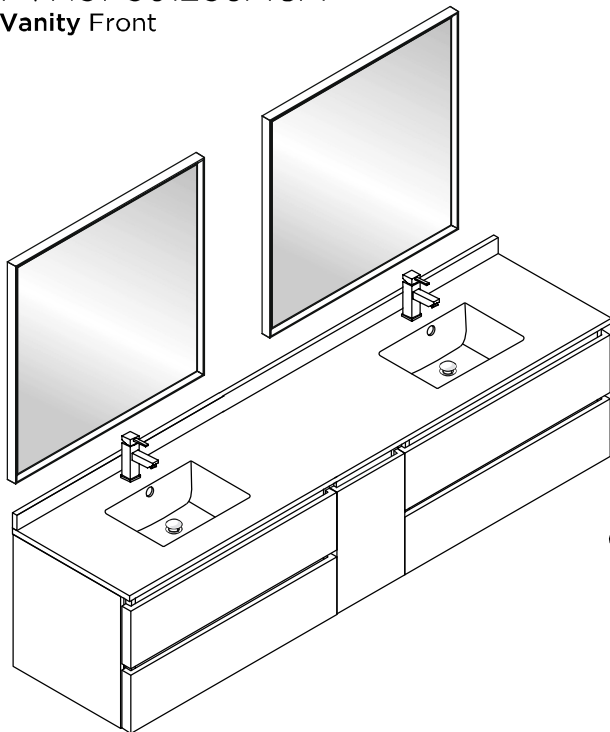


FVN31-361236ACA FORMOSA INSTALLATION GUIDE

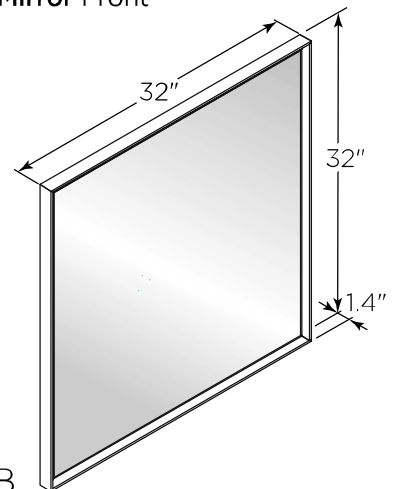
::kitchensource.com
1.800.667.8721



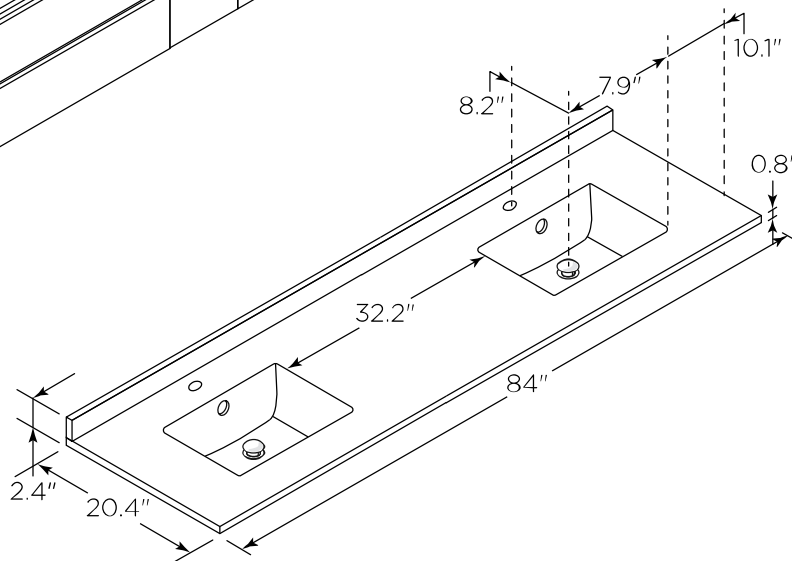
FVN31-361236ACA
Vanity Front



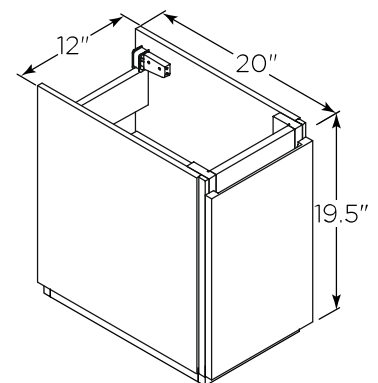
FMR3132ACA (X2)
Mirror Front



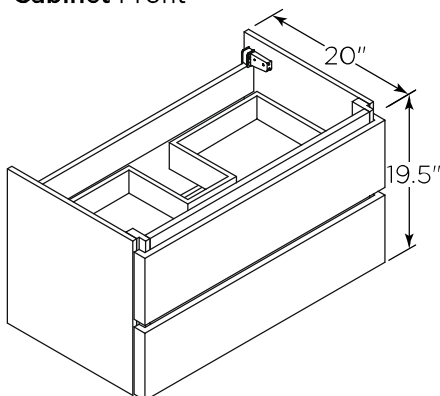
FCT2084WH-D-CMB
Counter Top Front



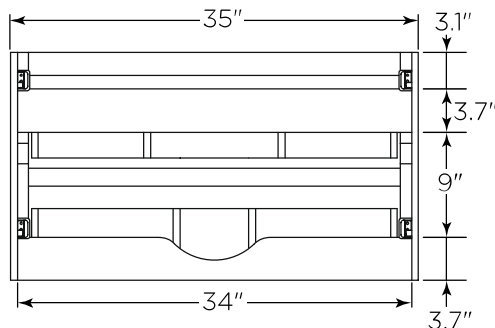
FST3112ACA
Cabinet Front



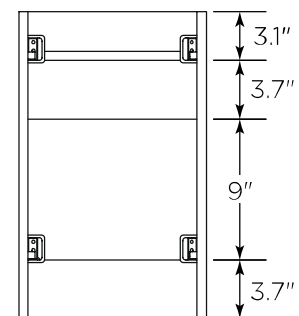
FCB3136ACA (X2)
Cabinet Front



FCB3136ACA
Cabinet Back



FST3112ACA
Cabinet Back

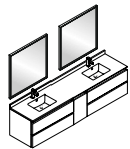


NOTE: All dimensions & specifications are approximate and subject to change without notice.



FVN31-361236ACA | FORMOSA | INSTALLATION GUIDE

PAGE 1

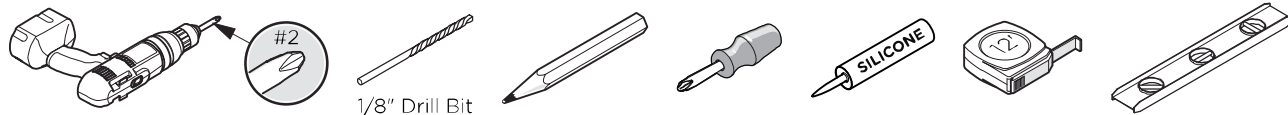


FVN31-361236ACA FORMOSA INSTALLATION GUIDE

::kitchensource.com
1.800.667.8721

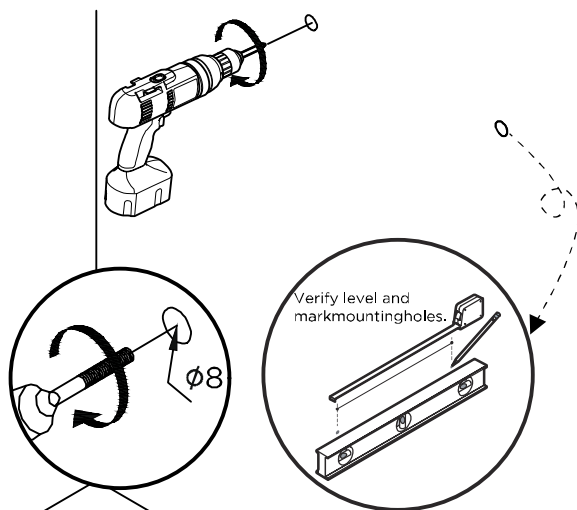


TOOLS FOR ASSEMBLY

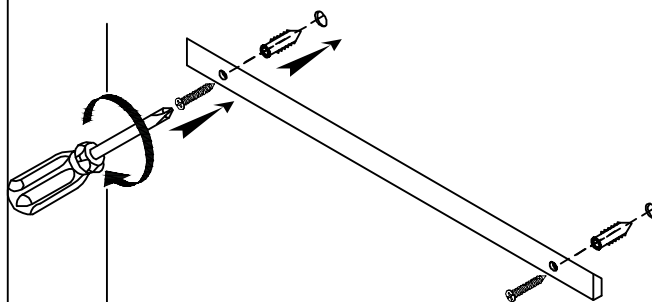


MIRROR INSTALLATION

- 1** Measure distance between the holes and mark it on the wall using a level.

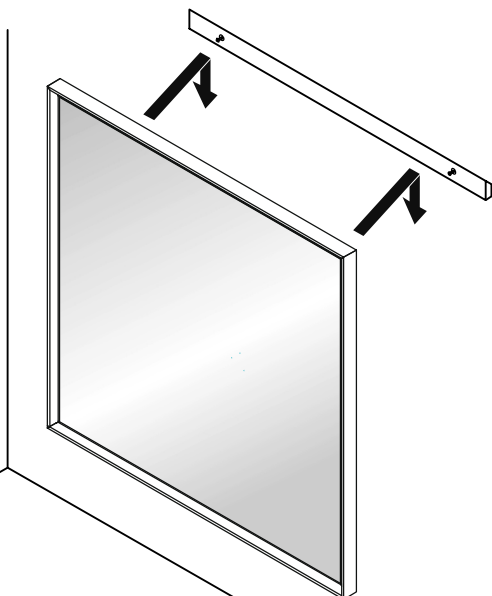


- 2** Press the anchors into the holes.



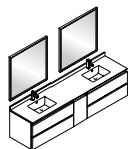
IMPORTANT: Consult an expert for the proper screws/bolts to use when attaching to various constructions. Screws provided do not attach to all wall construction types. Anchors are not required if brackets are installed in stud.

- 3** Hang mirror on the screws.



FVN31-361236ACA | FORMOSA | INSTALLATION GUIDE

PAGE 2

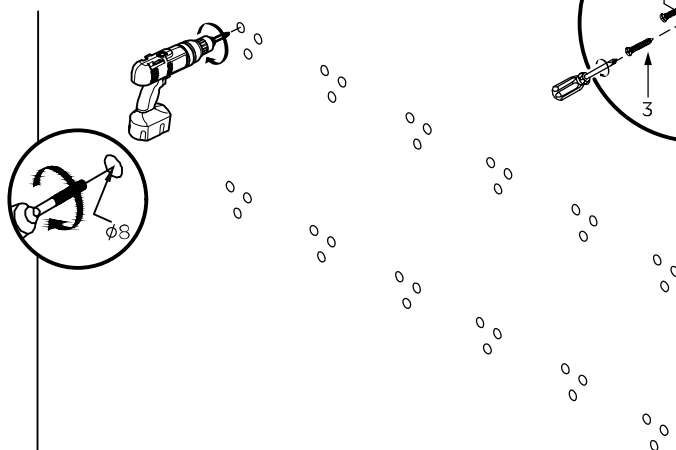


CABINET AND SINK INSTALLATION

1

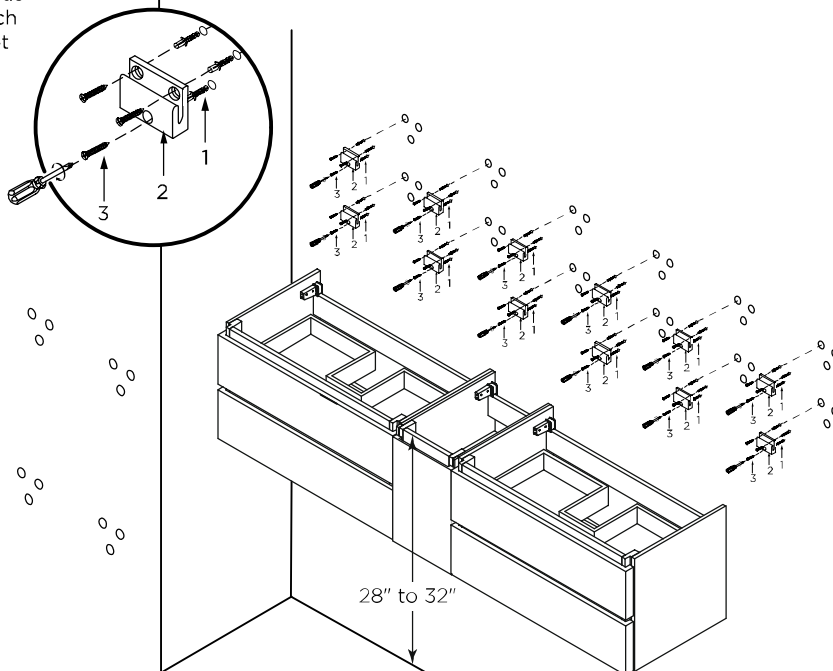
Mark anchor mounting hole locations on wall as shown. Drill holes in the finished wall as required.

IMPORTANT: Consult an expert for the proper screws/bolts to use when attaching to various constructions. Screws provided do not attach to all wall construction types. Anchors are not required if brackets are installed in stud.



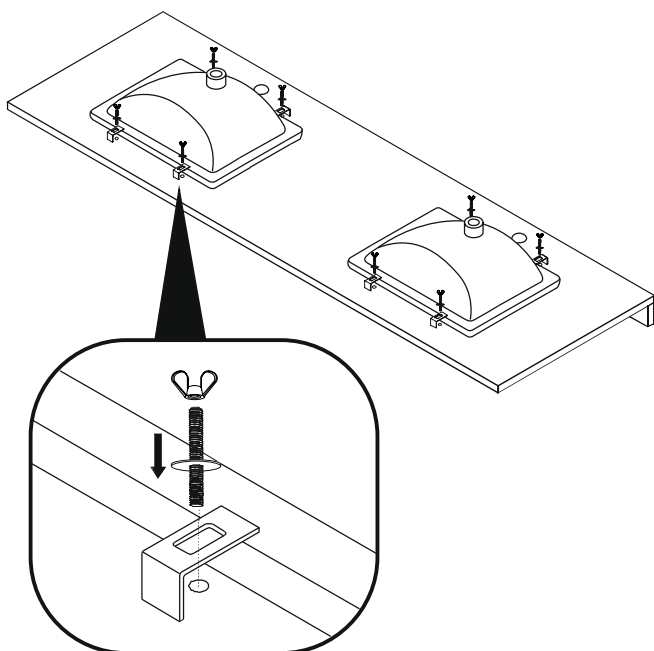
2

Attach cabinet to the wall with the screws. Insert the anchor(1) into the holes and secure the wall bracket(2) with the screws(3).



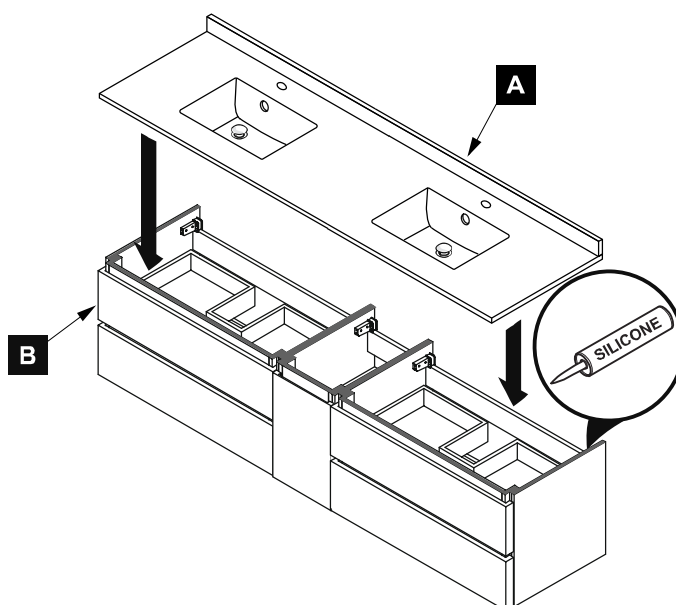
3

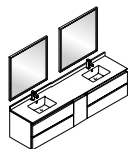
Install sink.



4

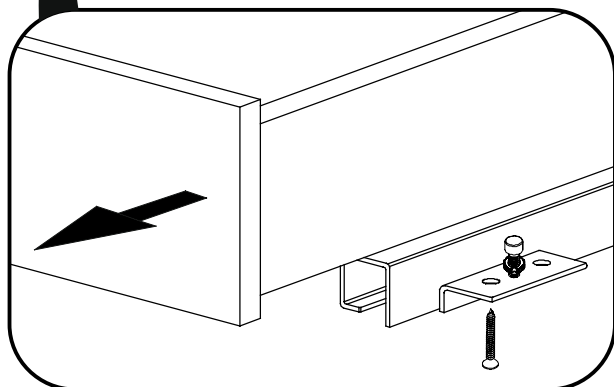
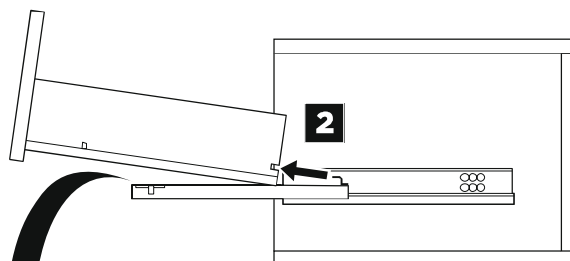
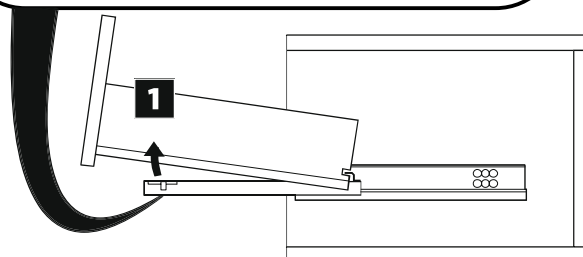
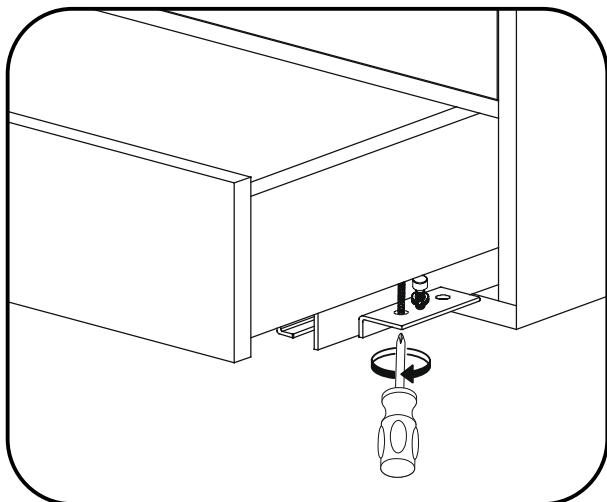
Apply a bead of silicone on the top of the cabinet (A) and place sink (B) on the cabinet.



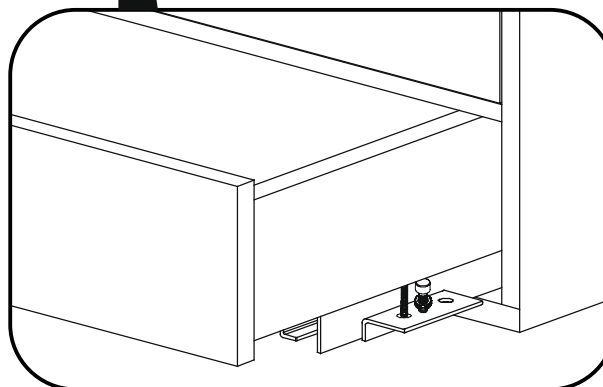
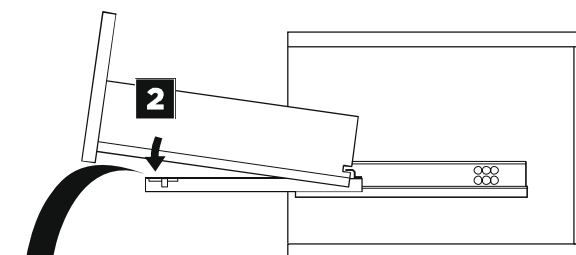
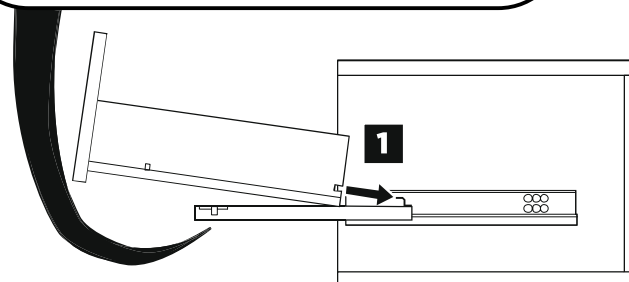
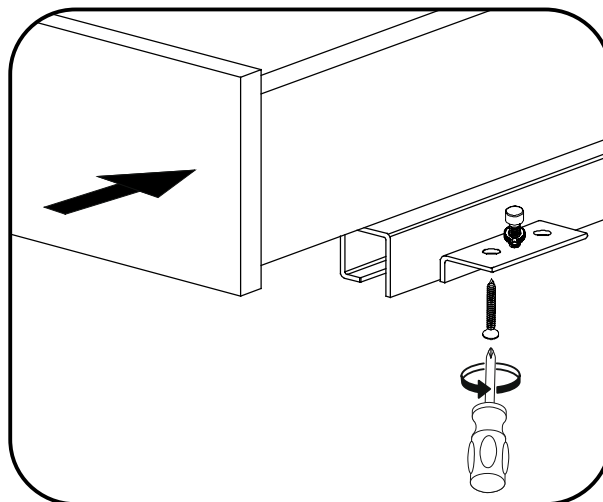


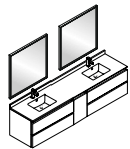
DRAWER REMOVAL & INSTALLATION

REMOVAL



INSTALLATION

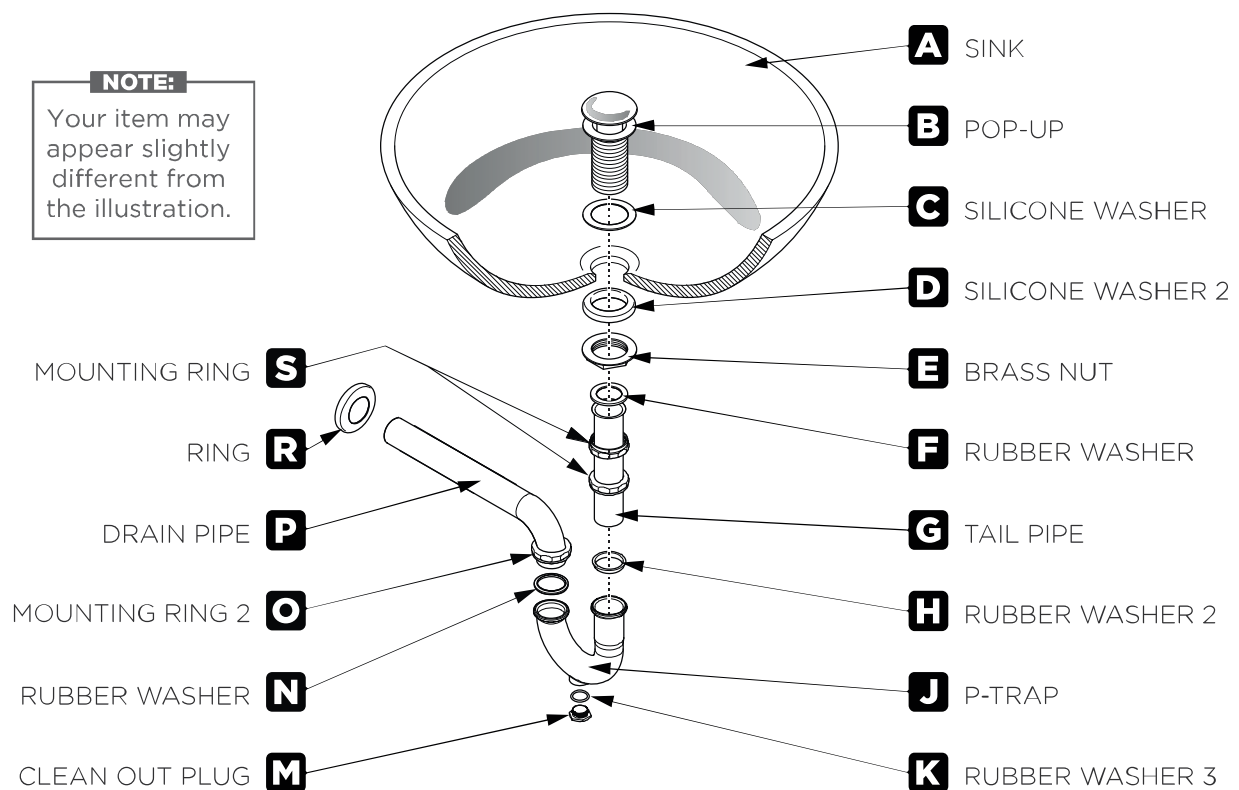




P-TRAP AND POP-UP INSTALLATION INSTRUCTIONS

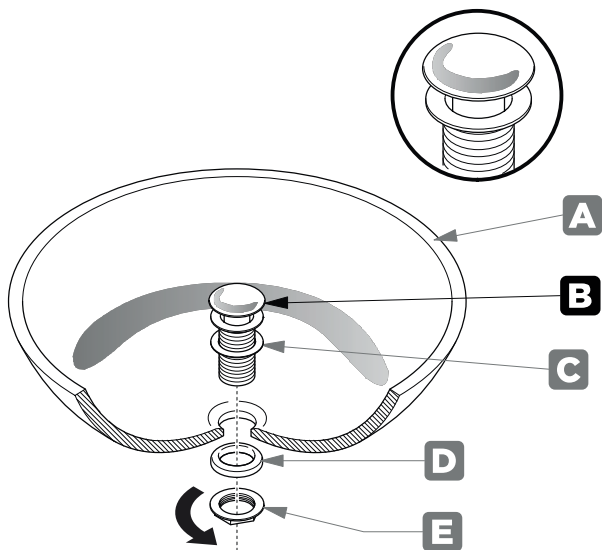
NOTE:

Your item may appear slightly different from the illustration.



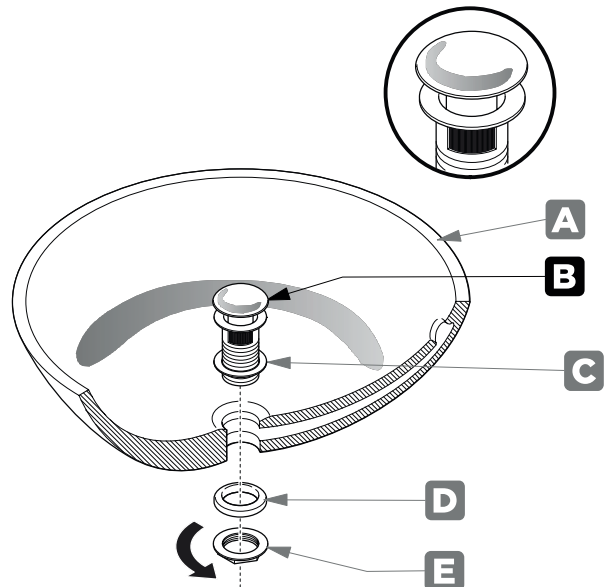
POP-UP INSTALLATION INSTRUCTIONS

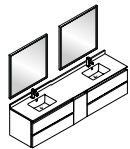
FOR SINKS WITHOUT OVERFLOW



OR

FOR SINKS WITH OVERFLOW

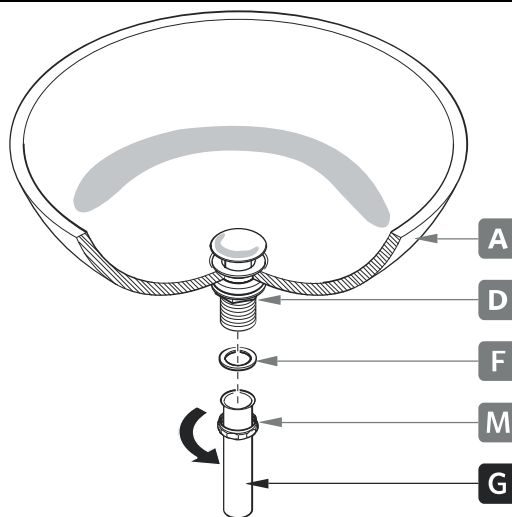




P-TRAP INSTALLATION

1

Install tail pipe (G)



2

Install p-trap (J)

