



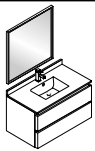
FORMOSA

INSTALLATION GUIDE

FVN3136ACA

CONTENTS:

Mirror	FMR3132ACA	PAGE 2
Cabinet	FCB3136ACA	PAGE 3
Sink	FCT2036WH-CMB	PAGE 3

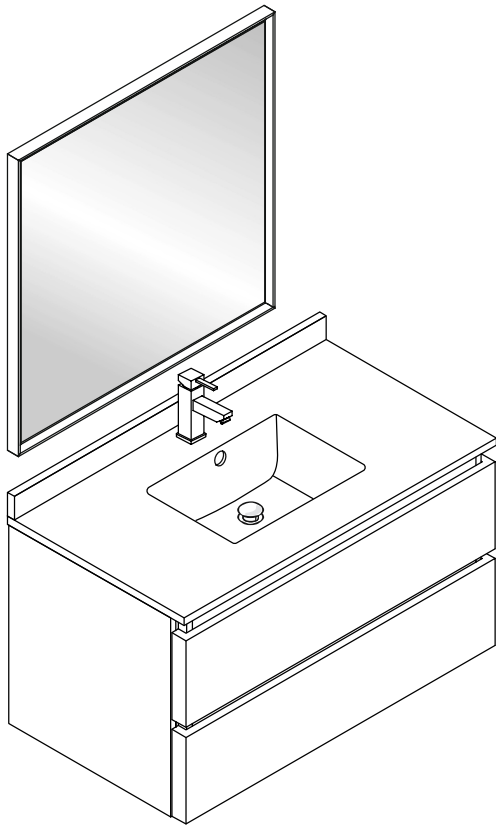


FVN3136ACA FORMOSA INSTALLATION GUIDE

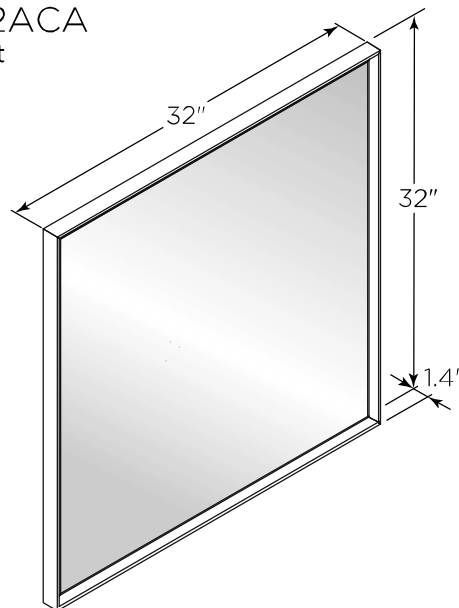
●●●kitchensource.com
1.800.667.8721



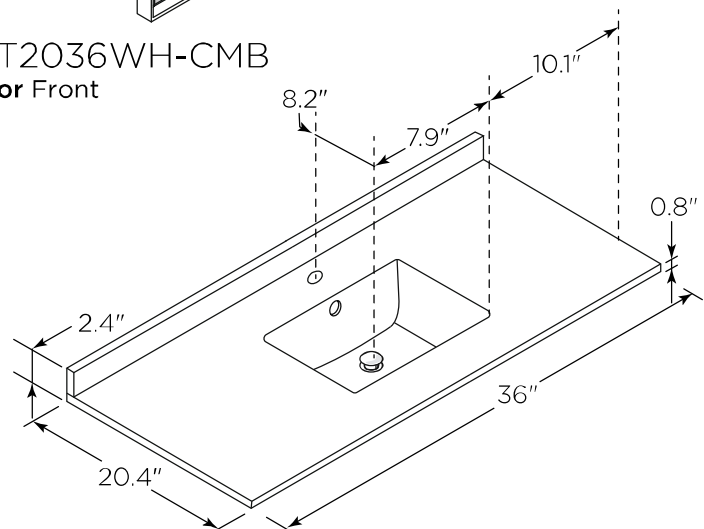
FVN3136ACA
Vanity Front



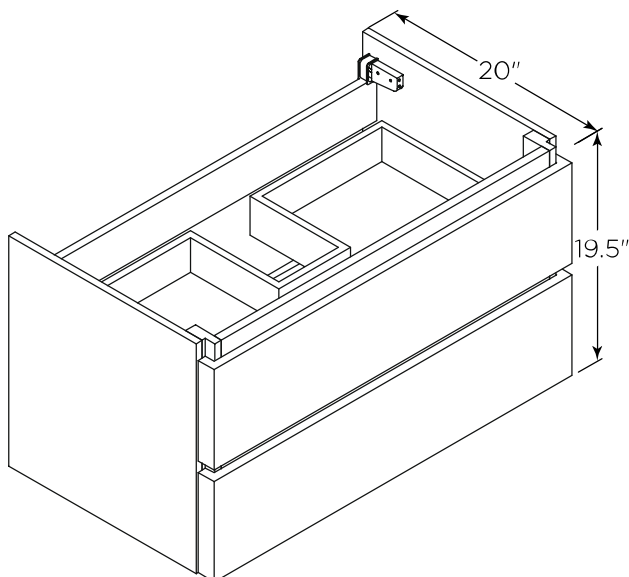
FMR3132ACA
Mirror Front



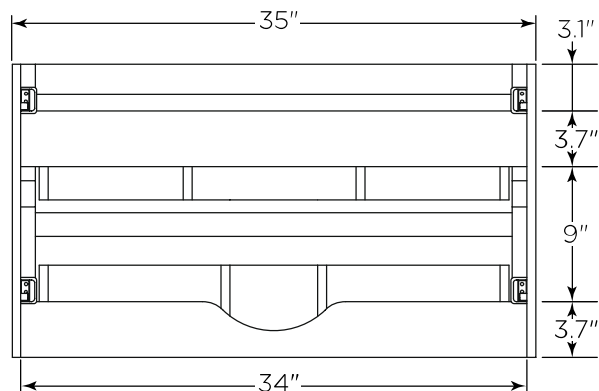
FCT2036WH-CMB
Mirror Front



FCB3136ACA
Cabinet Front



FCB3136ACA
Cabinet Back

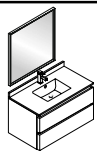


NOTE: All dimensions & specifications are approximate and subject to change without notice.



FVN3136ACA | FORMOSA | INSTALLATION GUIDE

PAGE 1

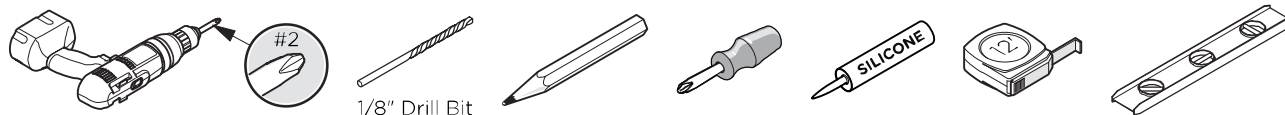


FVN3136ACA FORMOSA INSTALLATION GUIDE

|||kitchensource.com
1.800.667.8721

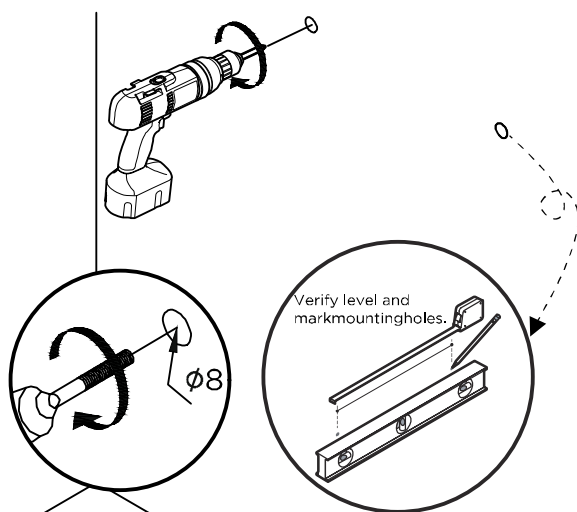


TOOLS FOR ASSEMBLY

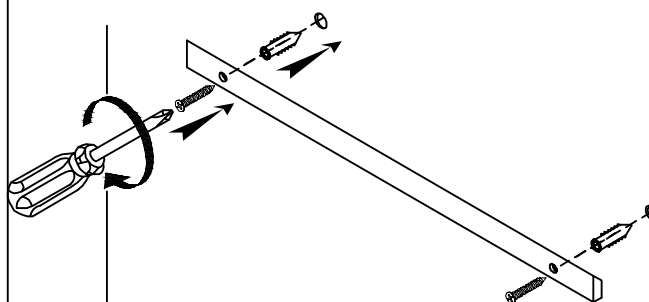


MIRROR INSTALLATION

- 1** Measure distance between the holes and mark it on the wall using a level.

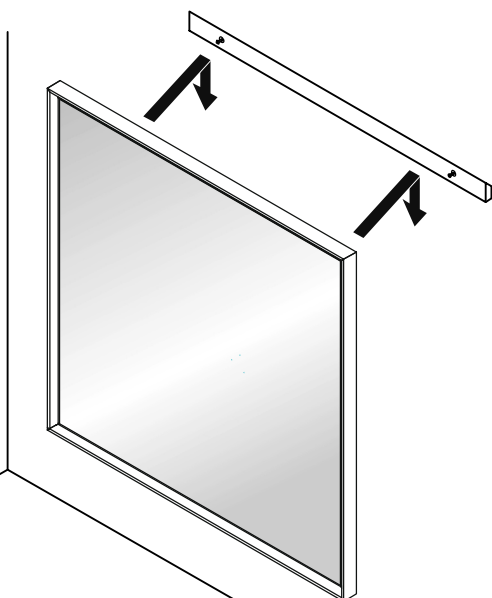


- 2** Press the anchors into the holes.



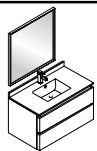
IMPORTANT: Consult an expert for the proper screws/bolts to use when attaching to various constructions. Screws provided do not attach to all wall construction types. Anchors are not required if brackets are installed in stud.

- 3** Hang mirror on the screws.



FVN3136ACA | FORMOSA | INSTALLATION GUIDE

PAGE 2

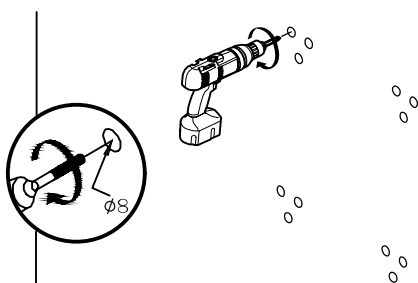


CABINET AND SINK INSTALLATION

1

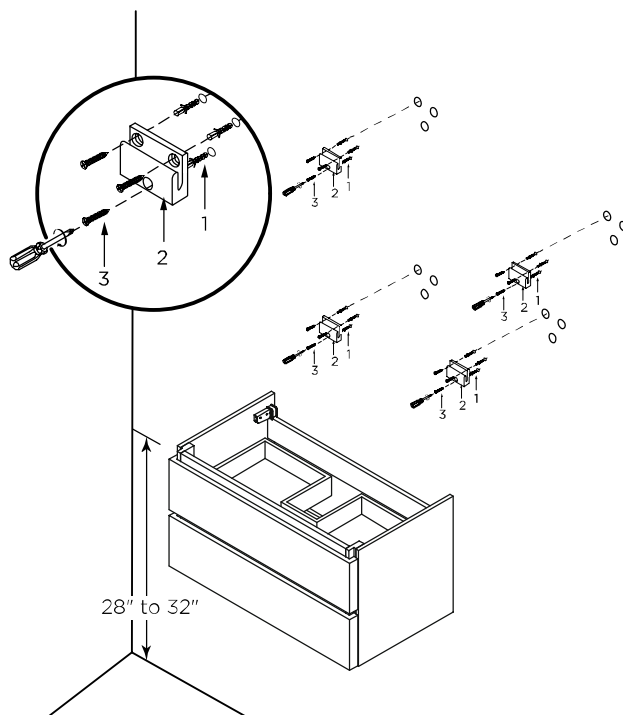
Mark anchor mounting hole locations on wall as shown. Drill holes in the finished wall as required.

IMPORTANT: Consult an expert for the proper screws/bolts to use when attaching to various constructions. Screws provided do not attach to all wall construction types. Anchors are not required if brackets are installed in stud.



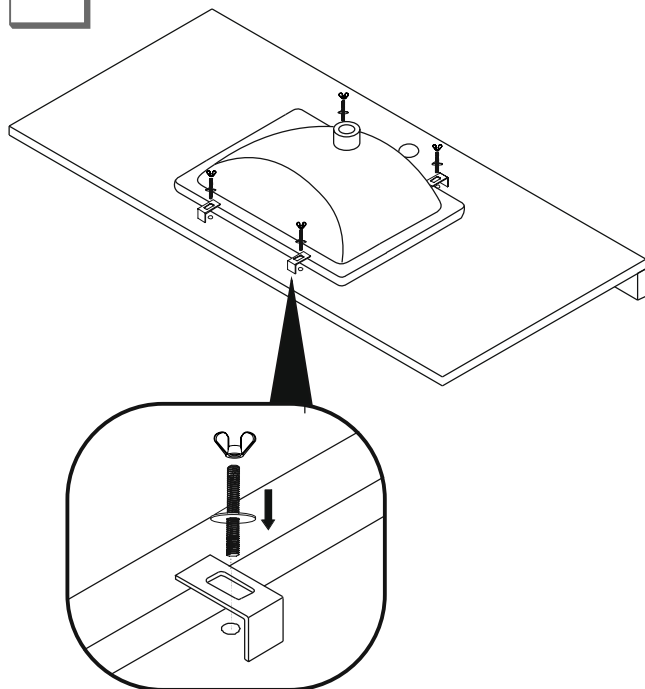
2

Attach cabinet to the wall with the screws. Insert the anchor(1) into the holes and secure the wall bracket(2) with the screws(3).



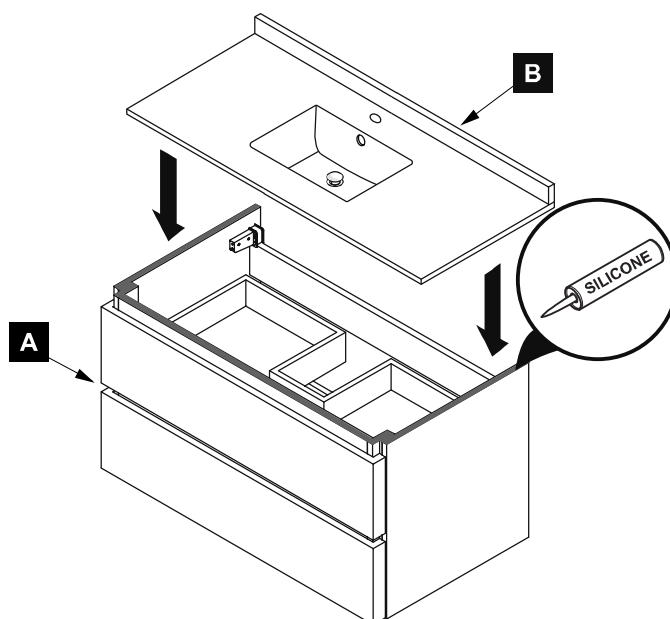
3

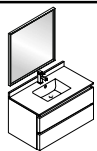
Install sink.



4

Apply a bead of silicone on the top of the cabinet (F) and place sink (E) on the cabinet.





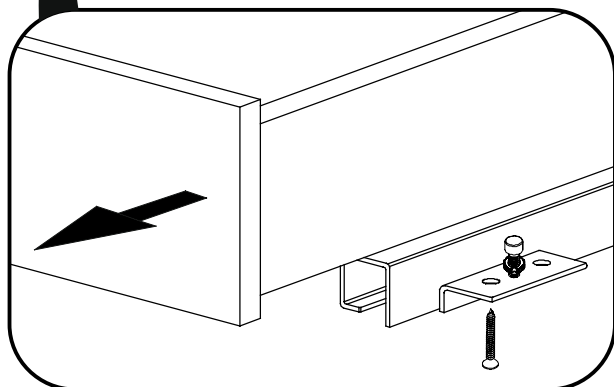
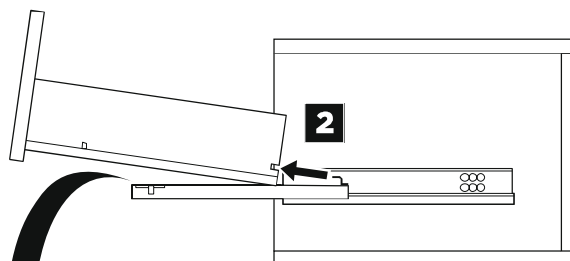
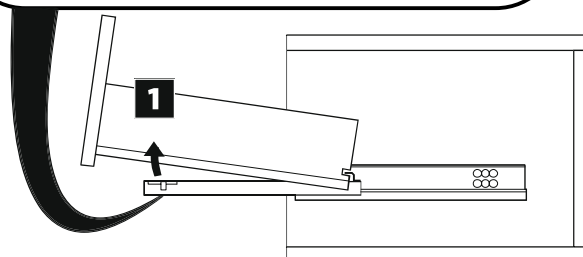
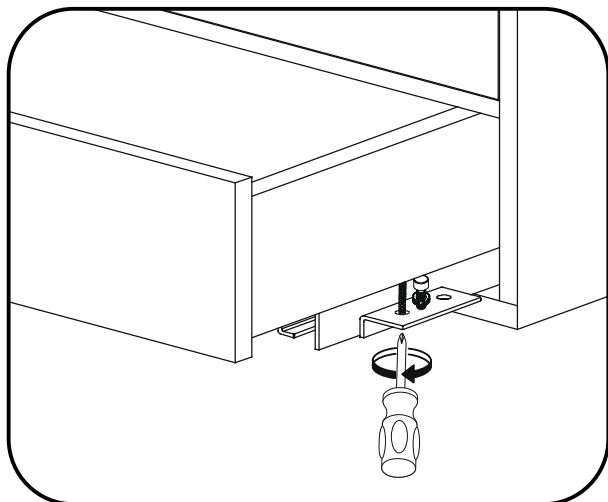
FVN3136ACA FORMOSA INSTALLATION GUIDE

|||kitchensource.com
1.800.667.8721

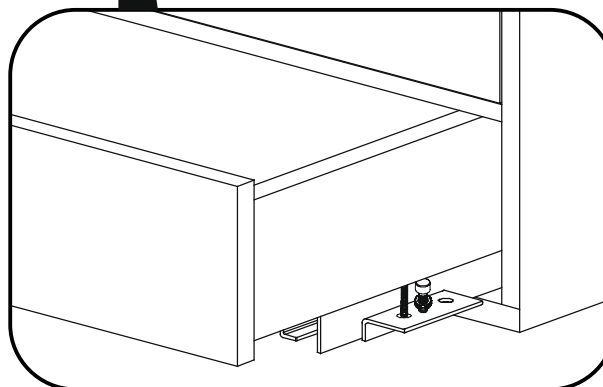
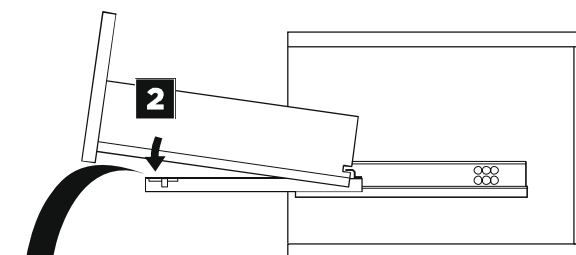
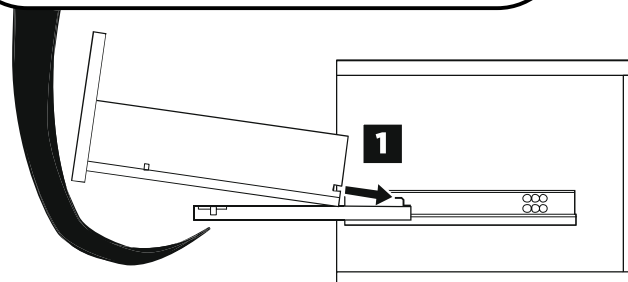
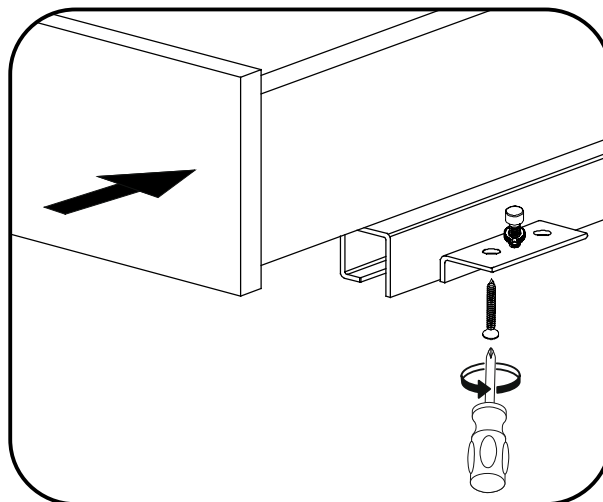


DRAWER REMOVAL & INSTALLATION

REMOVAL

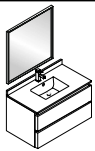


INSTALLATION



FVN3136ACA | FORMOSA | INSTALLATION GUIDE

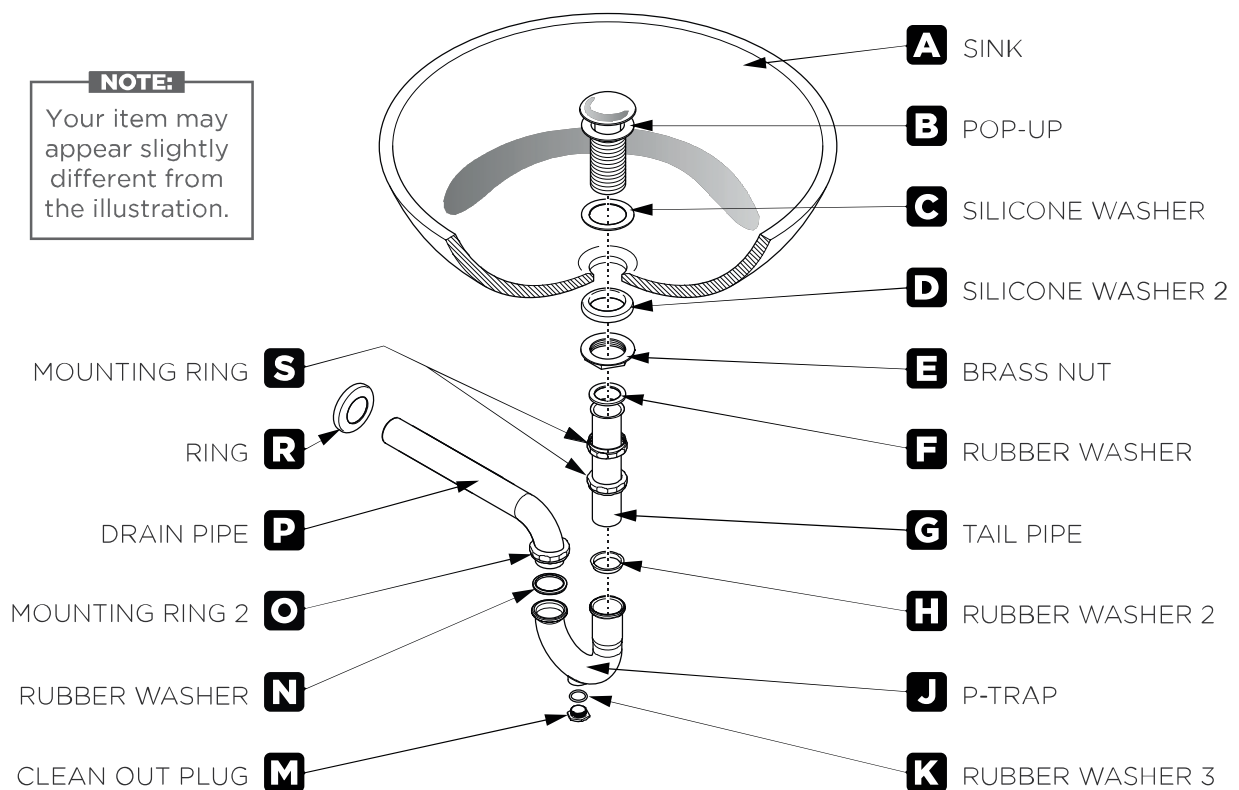
PAGE 4



P-TRAP AND POP-UP INSTALLATION INSTRUCTIONS

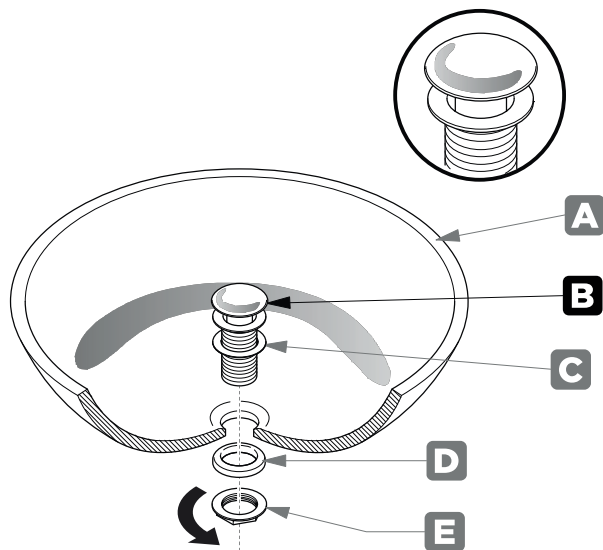
NOTE:

Your item may appear slightly different from the illustration.



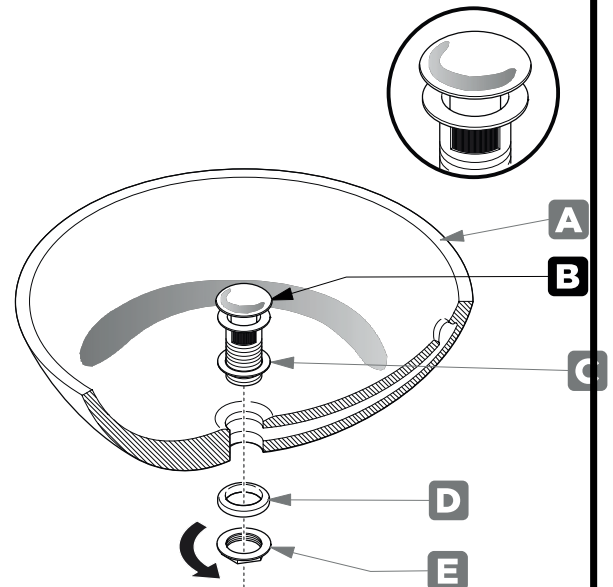
POP-UP INSTALLATION INSTRUCTIONS

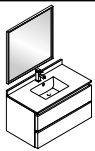
FOR SINKS WITHOUT OVERFLOW



OR

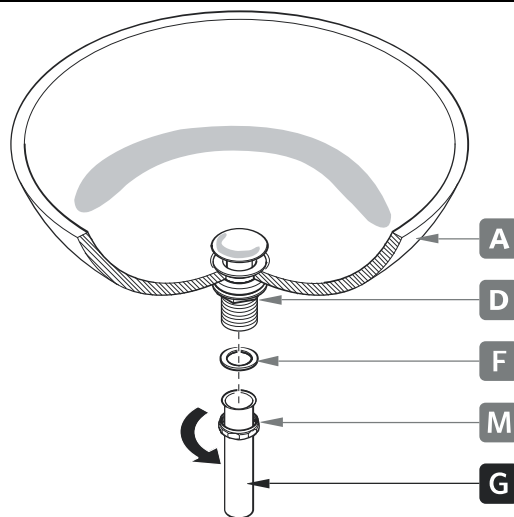
FOR SINKS WITH OVERFLOW





P-TRAP INSTALLATION

- 1** Install tail pipe (G)



- 2** Install p-trap (J)

