



**Stella**  
COLLECTION

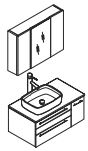
# LUCERA

## FVN6136-VSL-L

### INSTALLATION GUIDE

### CONTENTS:

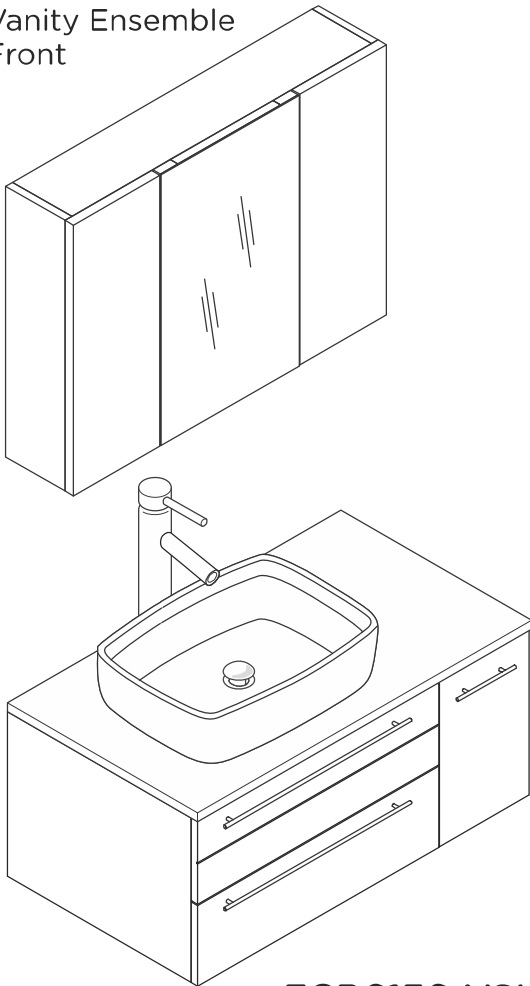
Medicine Cabinet.....	FMC6183.....	PAGE 2
Cabinet .....	FCB6136-VSL-L .....	PAGE 3
Sink .....	FVS6119WH .....	PAGE 4
Counter Top.....	FCT6136WH-VSL-L .....	PAGE 4



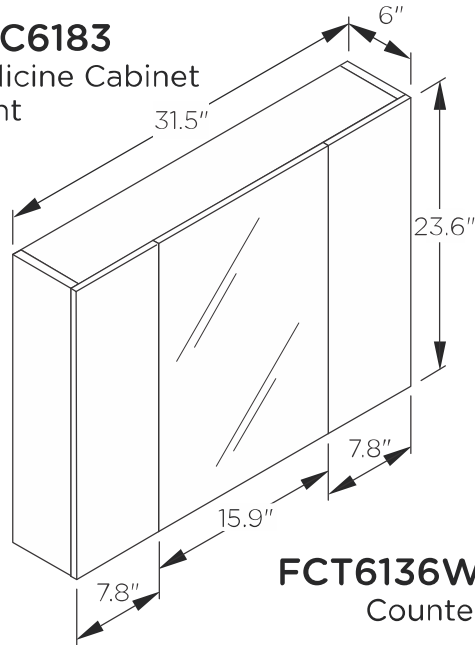
# FVN6136-VSL-L LUCERA INSTALLATION GUIDE



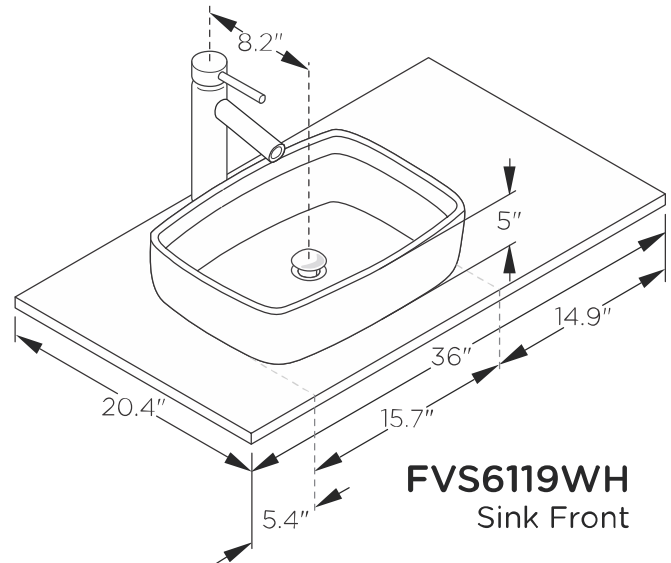
**FVN6136-VSL-L**  
Vanity Ensemble  
Front



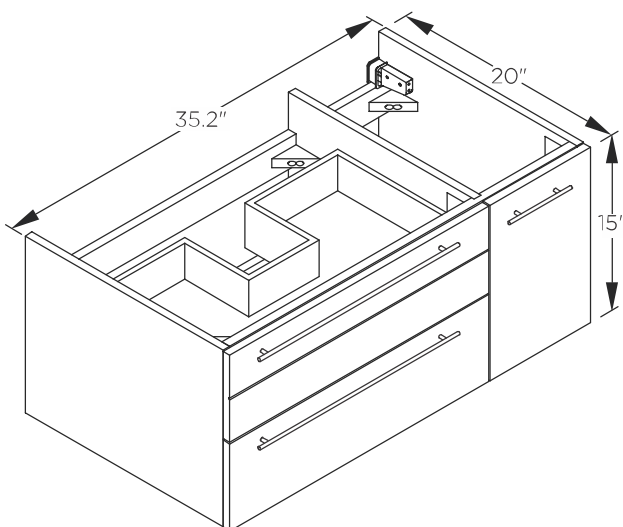
**FMC6183**  
Medicine Cabinet  
Front



**FCT6136WH-VSL-L**  
Counter Top Front

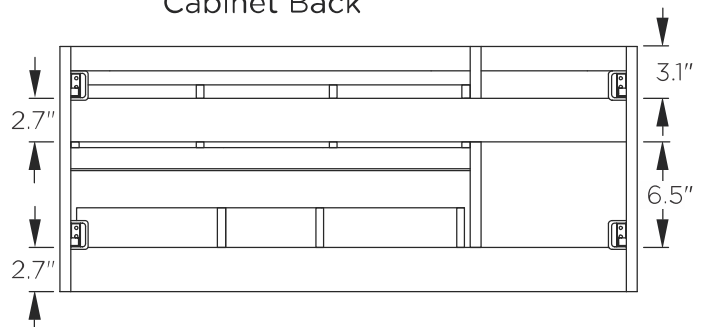


**FCB6136-VSL-L**  
Cabinet Front



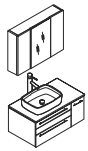
**FVS6119WH**  
Sink Front

**FCB6136-VSL-L**  
Cabinet Back



>All dimensions & specifications are approximate and subject to change without notice.

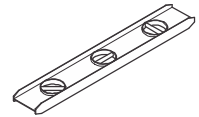
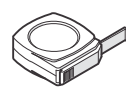
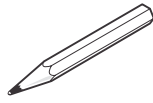
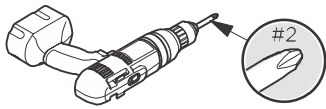




# FVN6136-VSL-L LUCERA INSTALLATION GUIDE



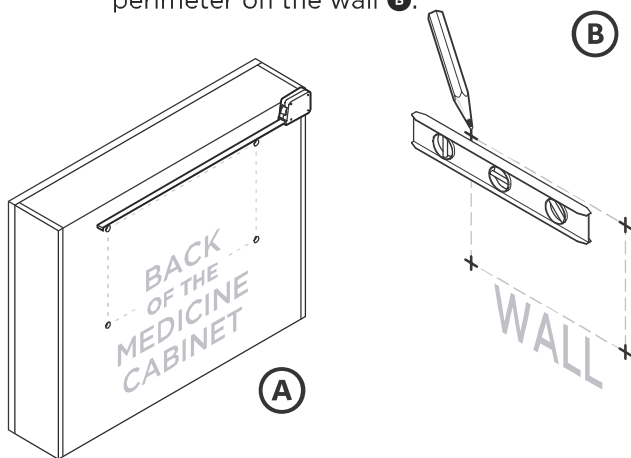
## TOOLS FOR ASSEMBLY



## MEDICINE CABINET INSTALLATION

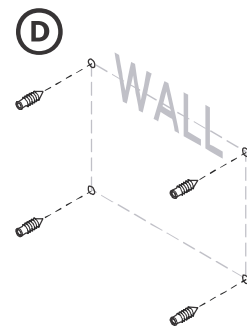
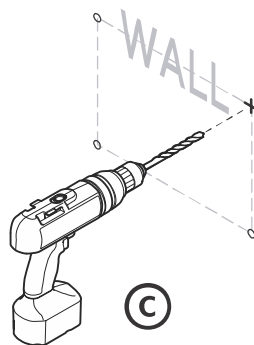
1

Measure distance between the mounting holes on the back of medicine cabinet **A** and mark the perimeter on the wall **B**.



2

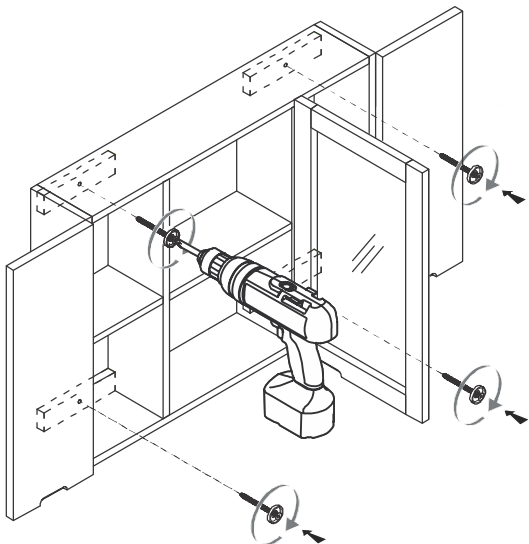
Once marked, drill the holes in the wall **C**.  
\*Insert the anchors in the holes **D**.



**\*IMPORTANT:** Consult an expert for the proper screws/bolts to use when attaching to various constructions. Screws provided do not attach to all wall construction types. Anchors are not required if brackets are installed in stud.

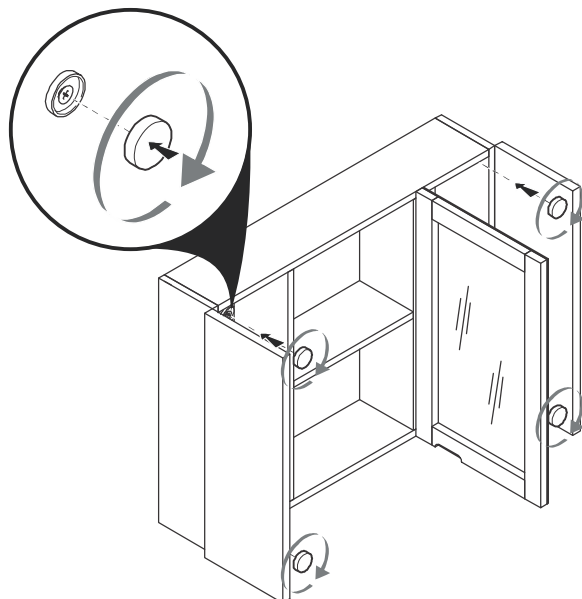
3

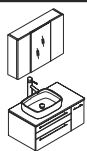
Connect medicine cabinet to the wall using a drill.



4

Cover the screws with the screw caps.





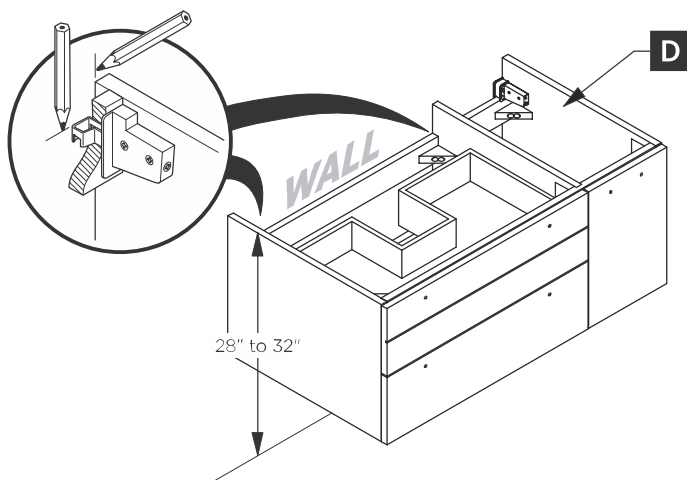
# FVN6136-VSL-L LUCERA INSTALLATION GUIDE



## CABINET INSTALLATION

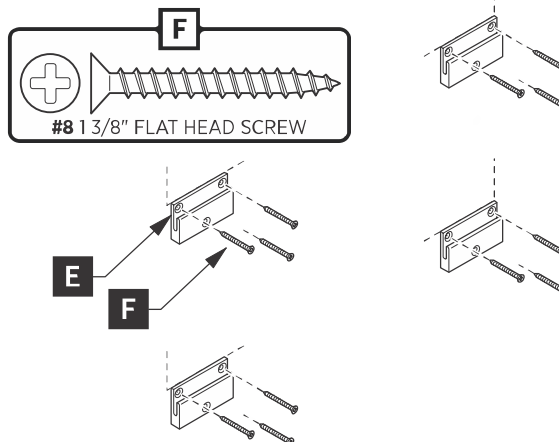
1

Place cabinet (D) in designated location and mark the bracket position on the wall.



2

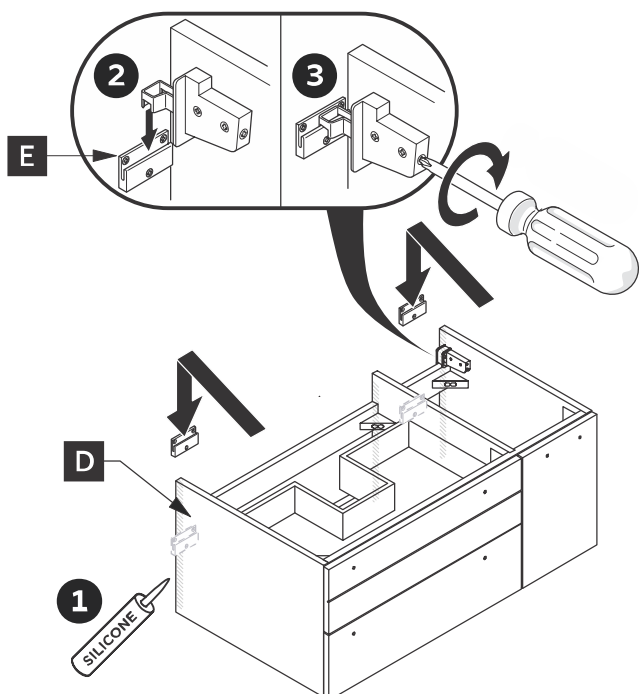
Attach wall brackets (E) to the wall with the screws (F).



**IMPORTANT:** Consult an expert for the proper screws/bolts to use when attaching to various constructions. Screws provided do not attach to all wall construction types. Anchors are not required if brackets are installed in stud.

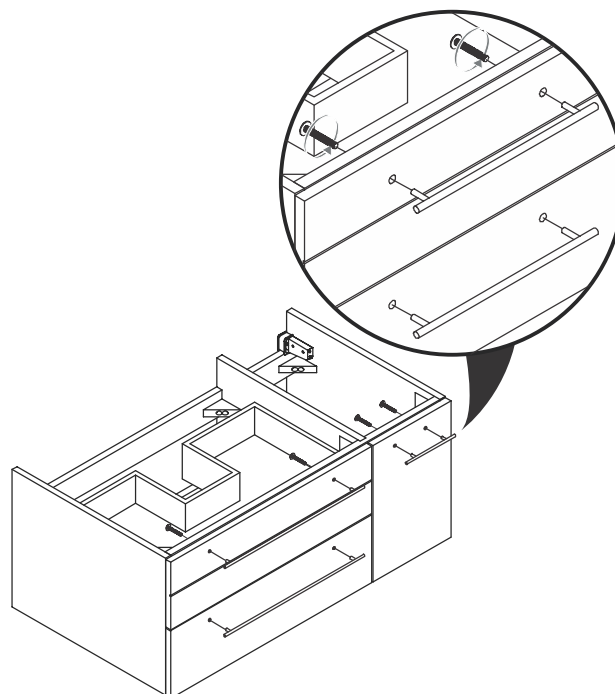
3

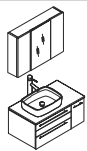
Apply a bead of the silicone and hang a cabinet (D) on the brackets (E).



4

Attach the handles to cabinet.





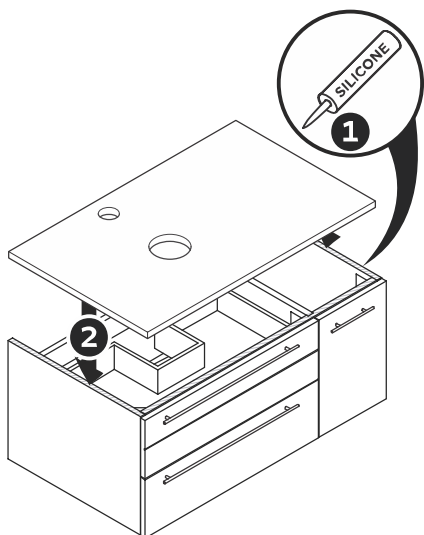
# FVN6136-VSL-L LUCERA INSTALLATION GUIDE



## CABINET INSTALLATION

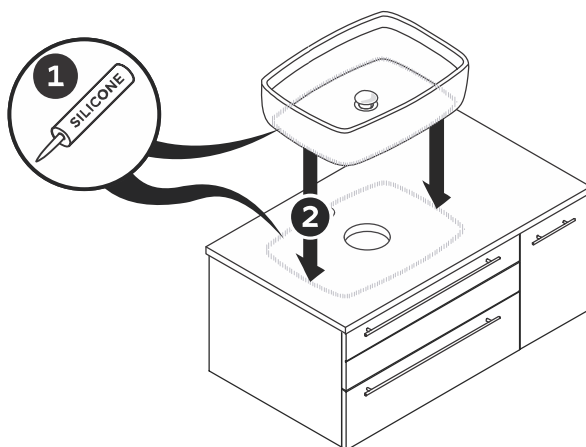
5

Apply a bead of silicone on top of the cabinet. Place counter top on the cabinet.



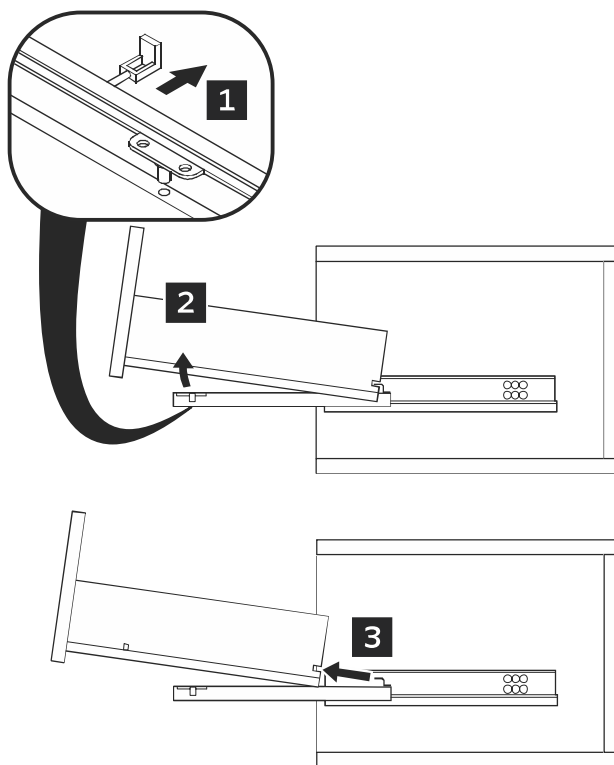
6

Apply a bead of silicone on top of the counter top and bottom of the sink. Connect sink to the counter top.

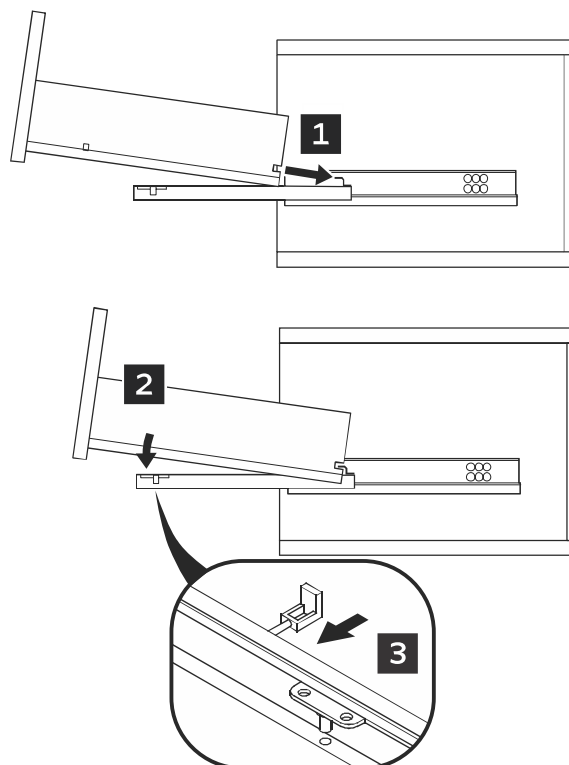


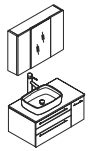
## DRAWER REMOVAL & INSTALLATION

### DRAWER REMOVAL



### DRAWER INSTALLATION





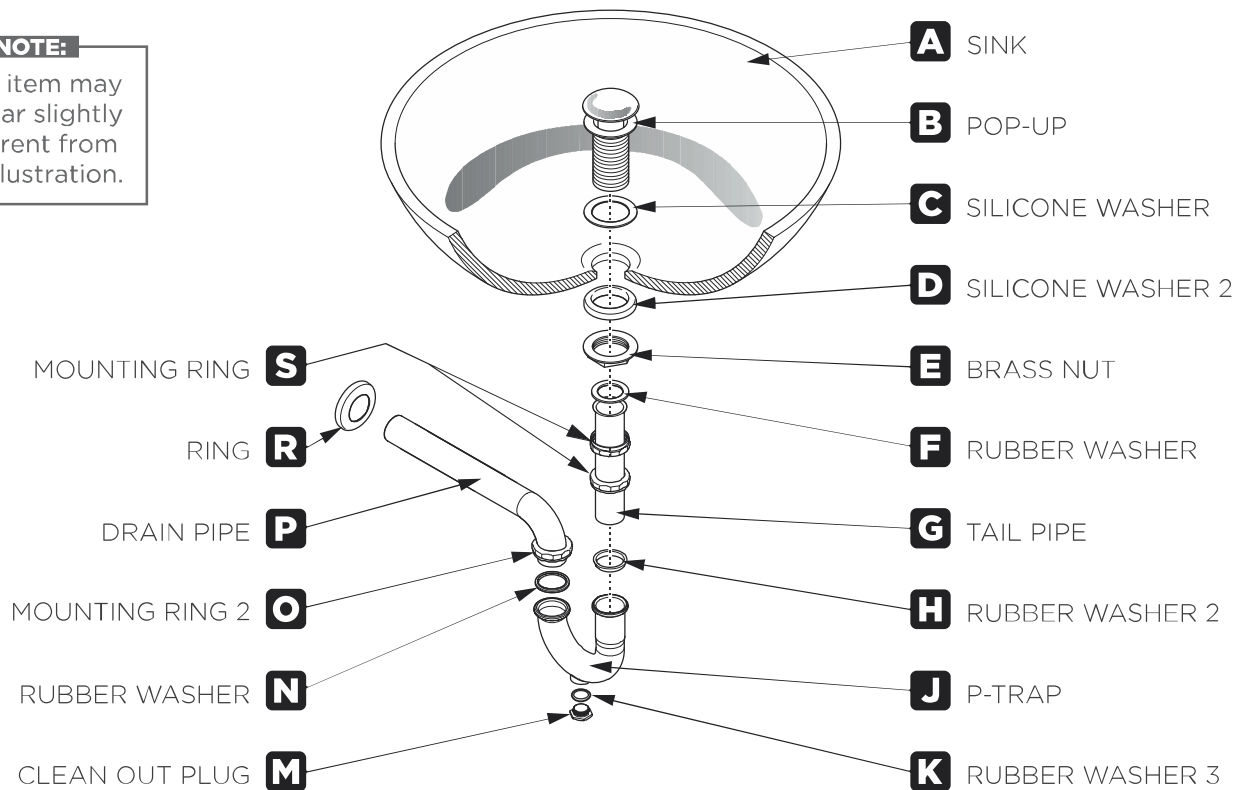
# FVN6136-VSL-L LUCERA INSTALLATION GUIDE



## P-TRAP AND POP-UP INSTALLATION INSTRUCTIONS

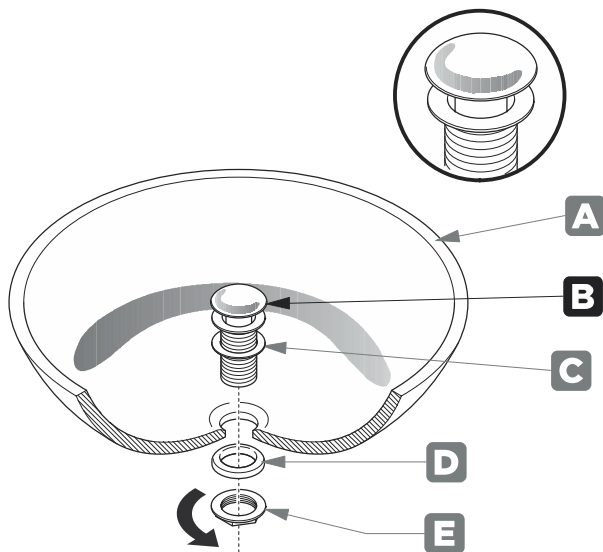
### NOTE:

Your item may appear slightly different from the illustration.



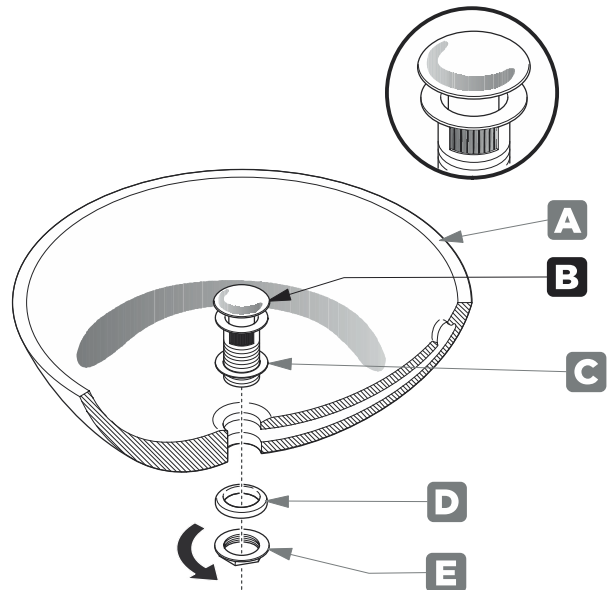
## POP-UP INSTALLATION INSTRUCTIONS

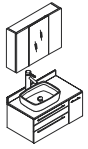
### FOR SINKS WITHOUT OVERFLOW



OR

### FOR SINKS WITH OVERFLOW





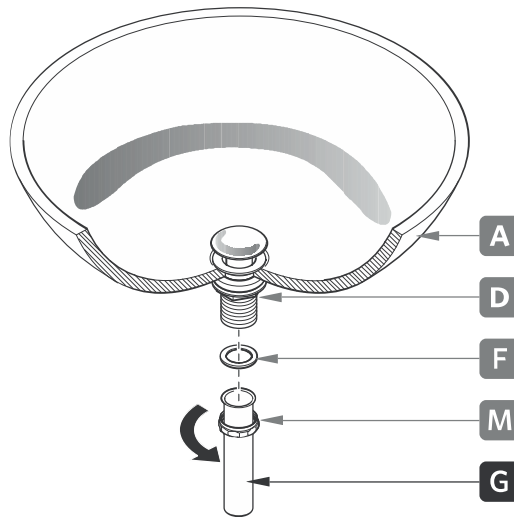
# FVN6136-VSL-L LUCERA INSTALLATION GUIDE



## P-TRAP INSTALLATION

1

Install a tail pipe (G).



2

Connect a P-trap (J).

