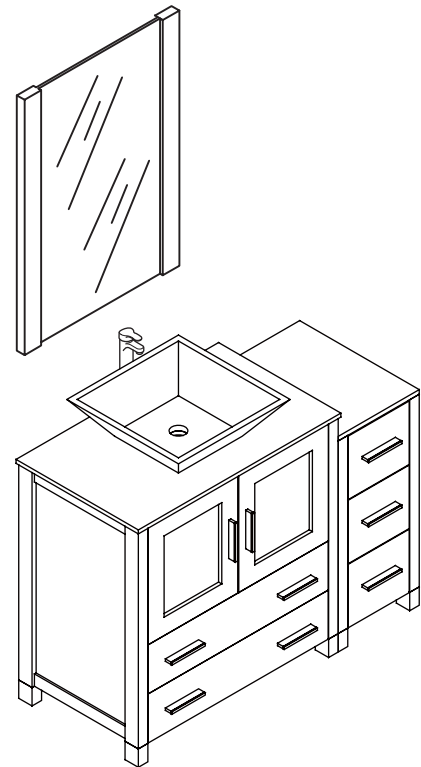
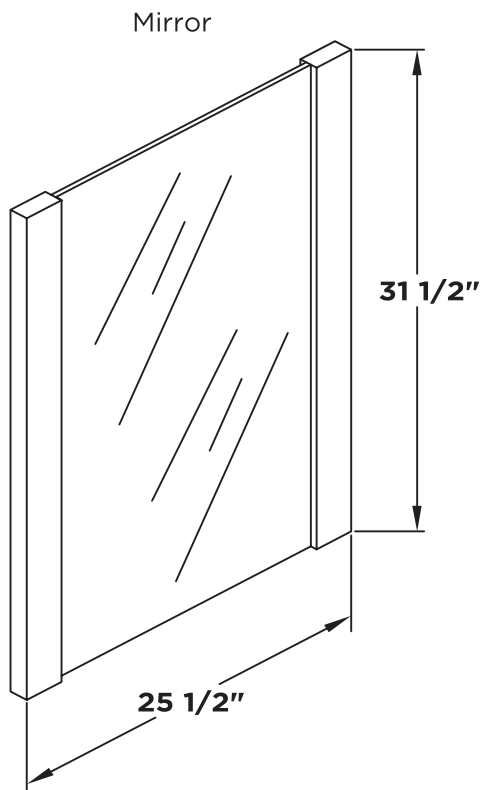


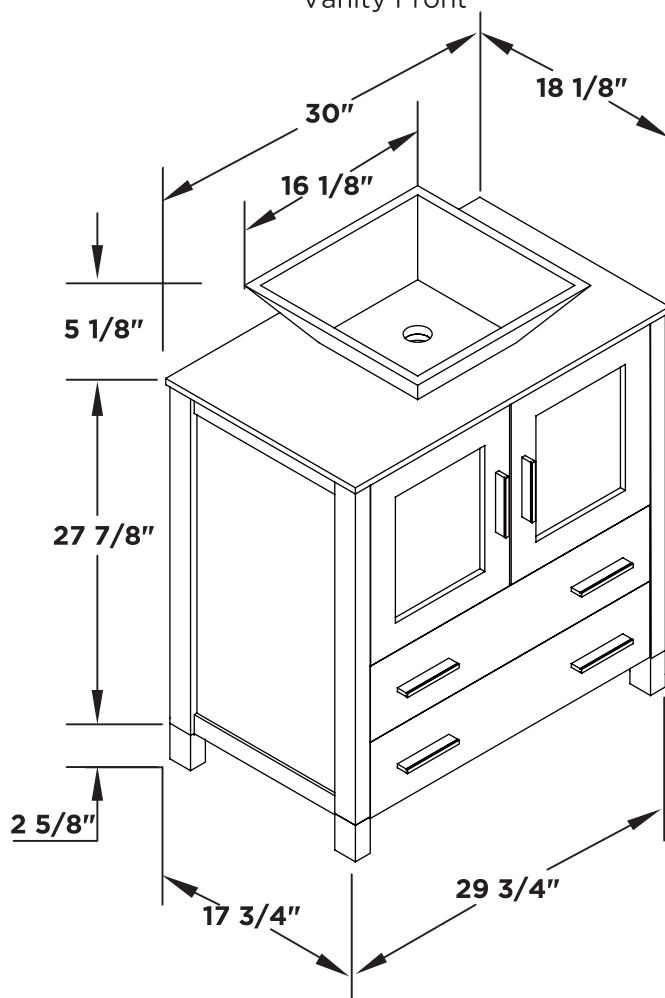
FVN62-3012-VSL
TORINO
INSTALLATION GUIDE

kitchensource.com
1.800.667.8721

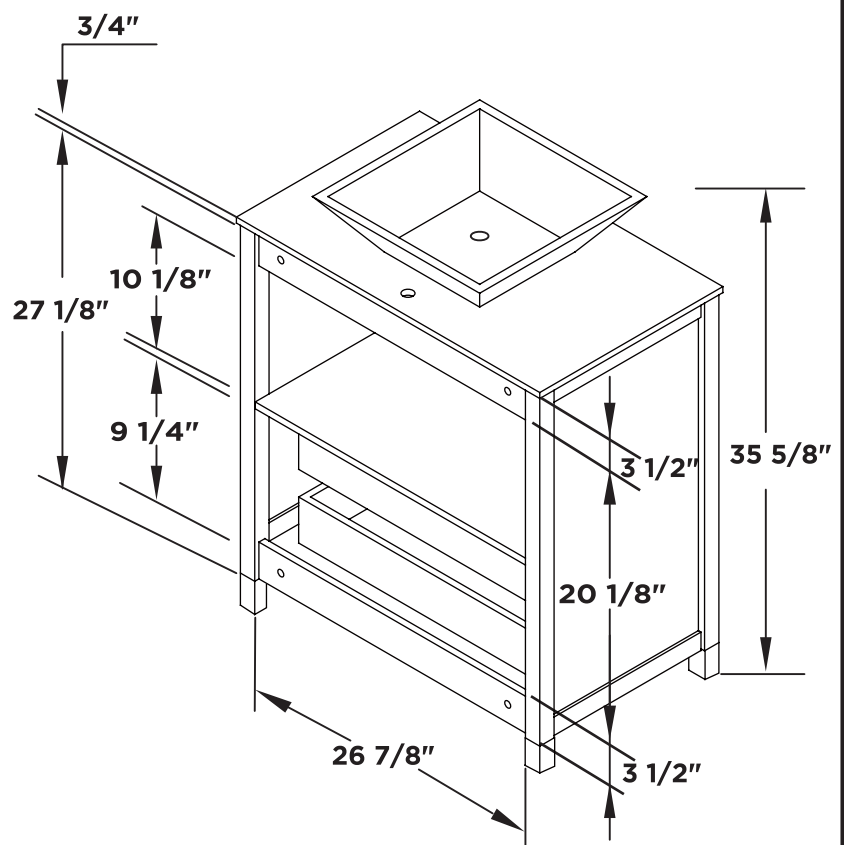
FRESCA®



Vanity Front



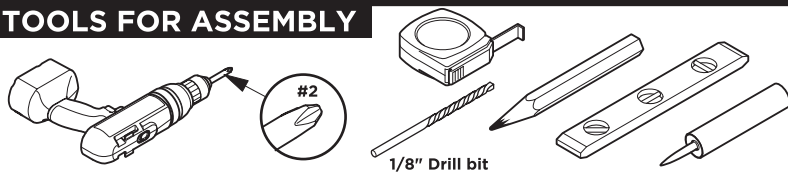
Vanity Back



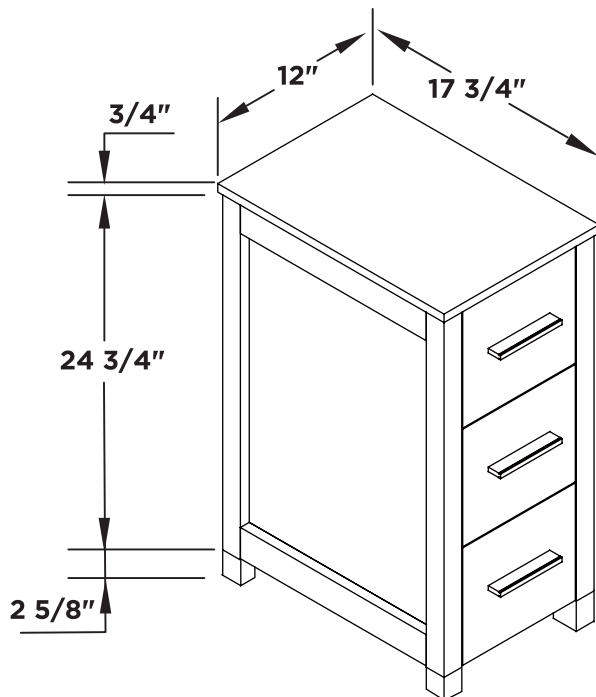
TORINO INSTALLATION GUIDE

PAGE 1

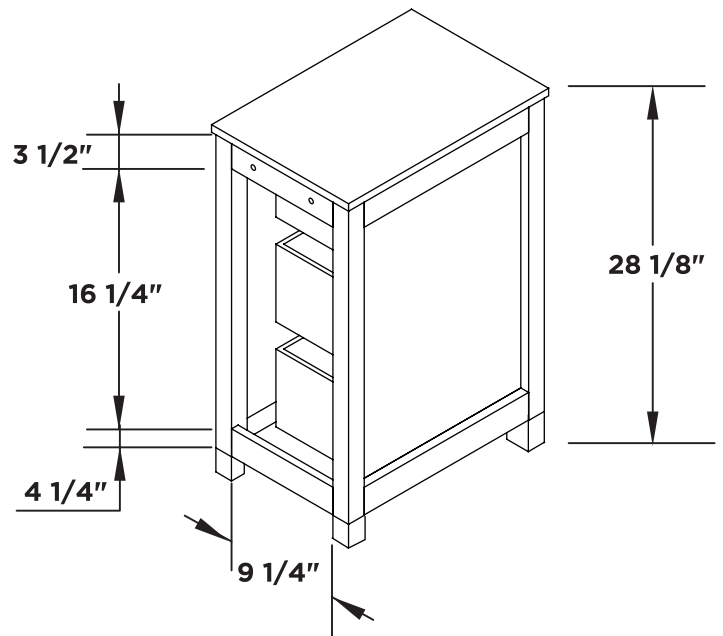
TOOLS FOR ASSEMBLY



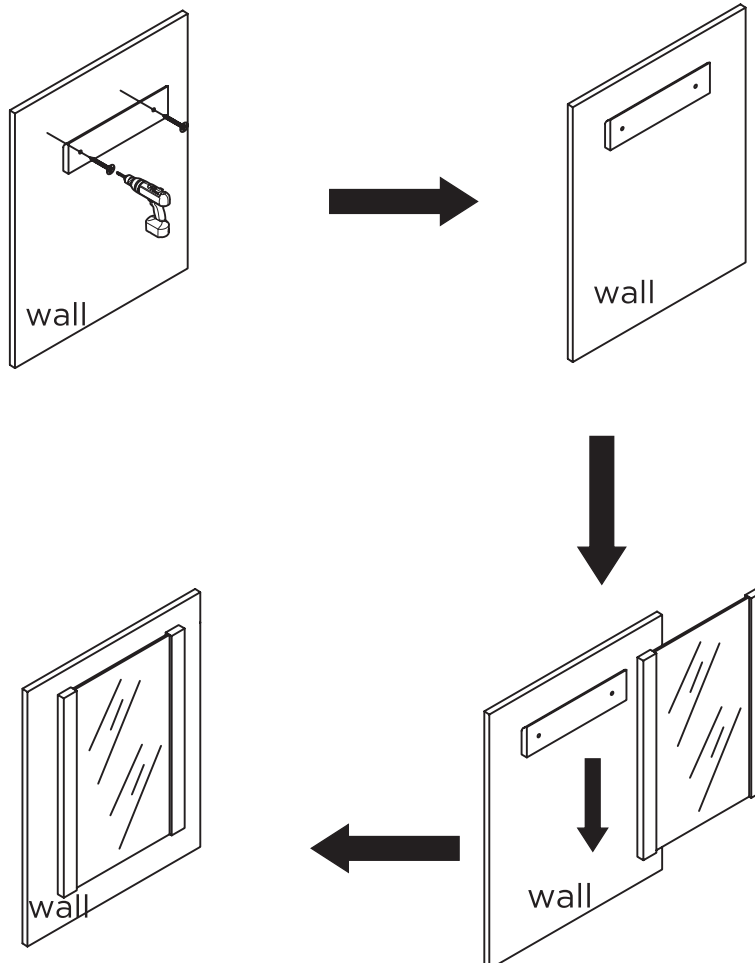
Side Cabinet Front



Side Cabinet Back

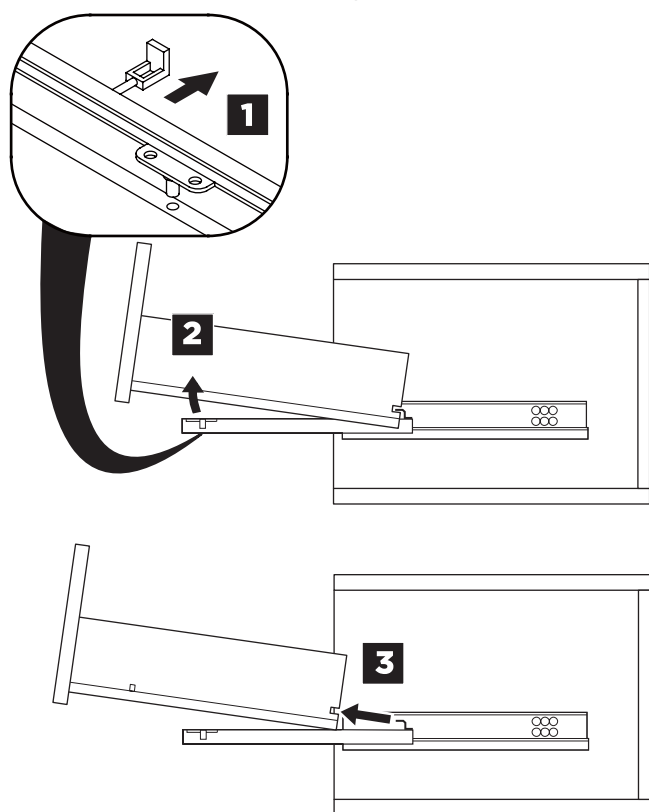


MIRROR INSTALLATION

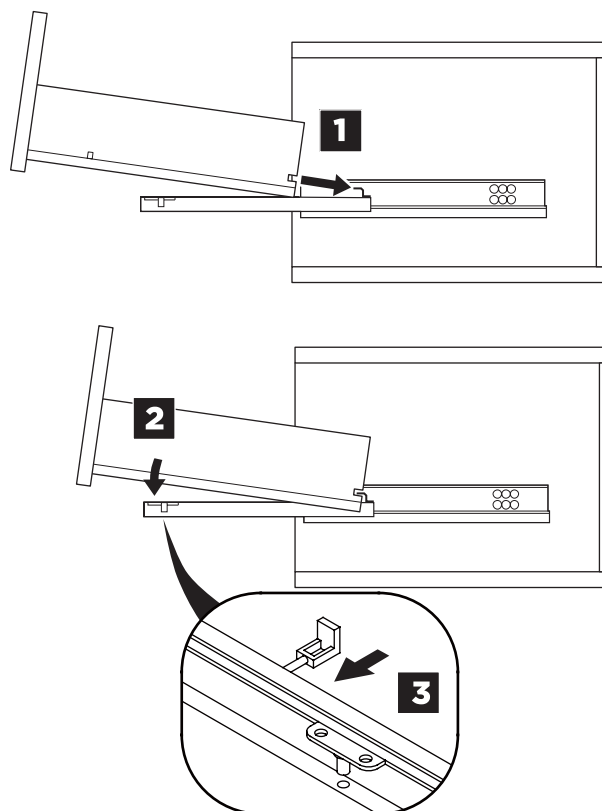


DRAWER REMOVAL & INSTALLATION

REMOVAL

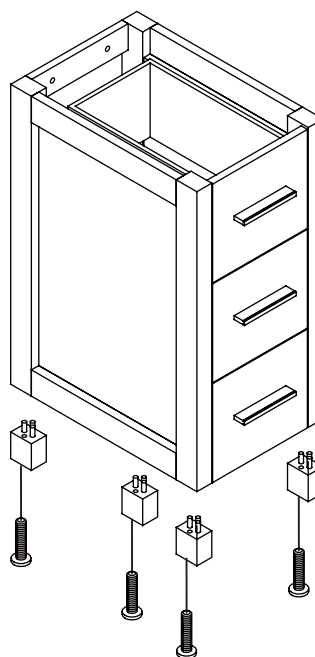
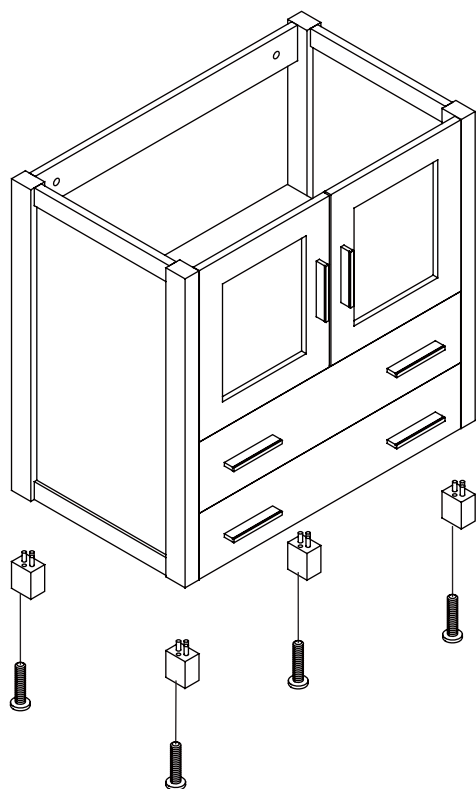


INSTALLATION



1

Install leg



TORINO INSTALLATION GUIDE

PAGE 3

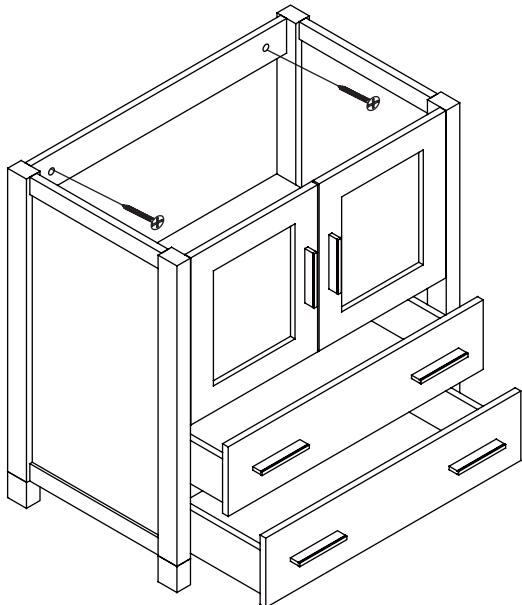
2

Remove drawer

3

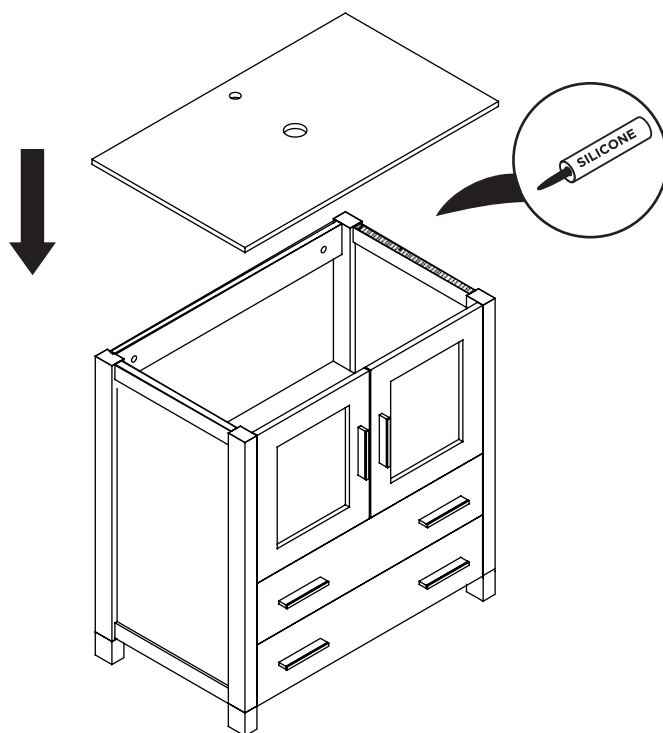
Install cabinet

IMPORTANT: Consult an expert for the proper screws/bolts to use when attaching to various wall constructions. Screws provided do not attach to all wall construction types.



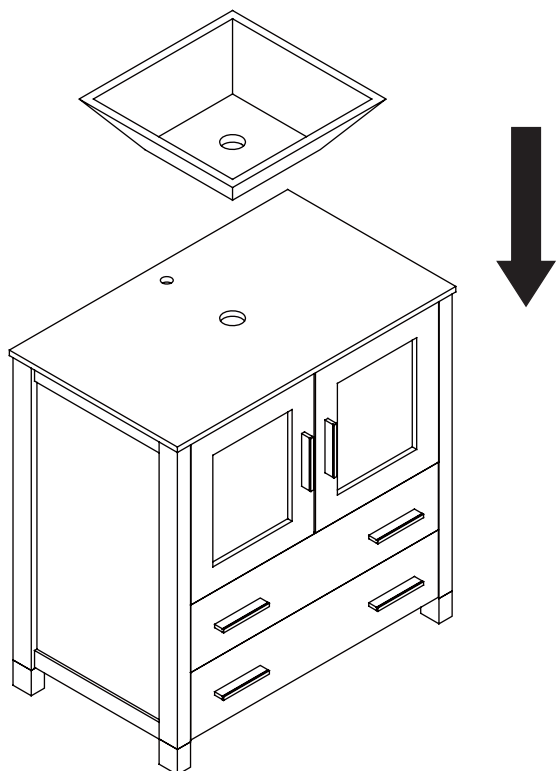
4

Install top panel



5

Install sink

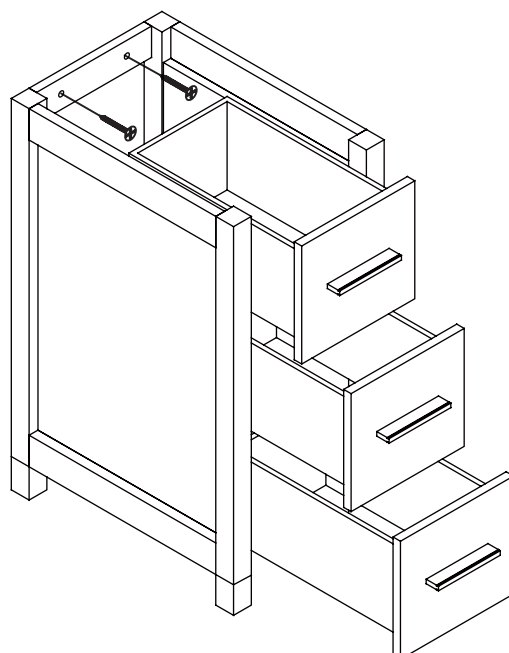


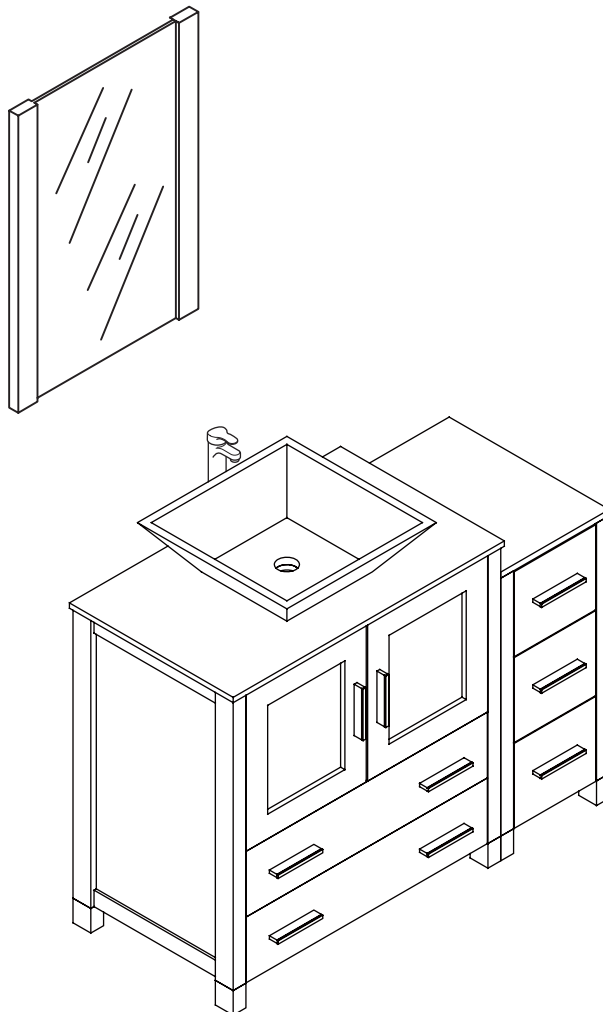
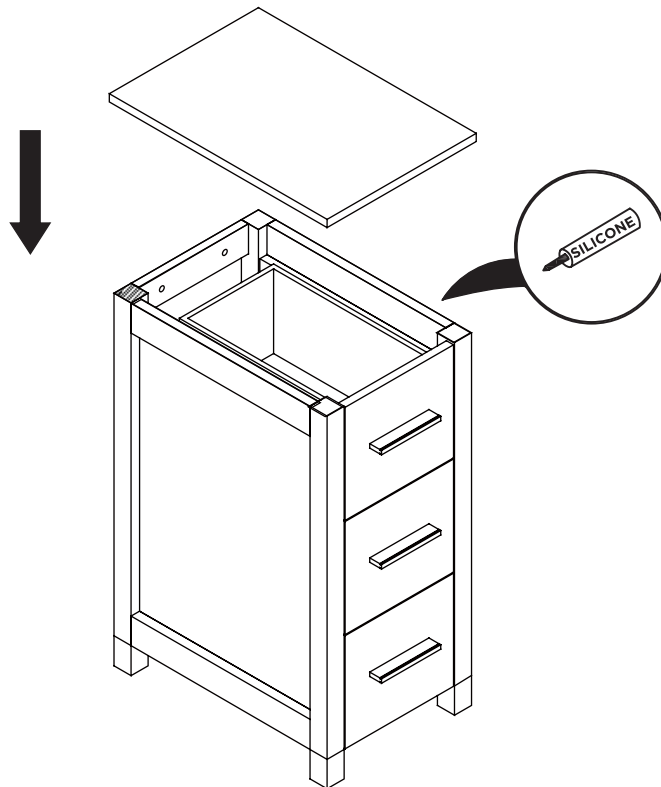
6

Remove side cabinet drawer

7

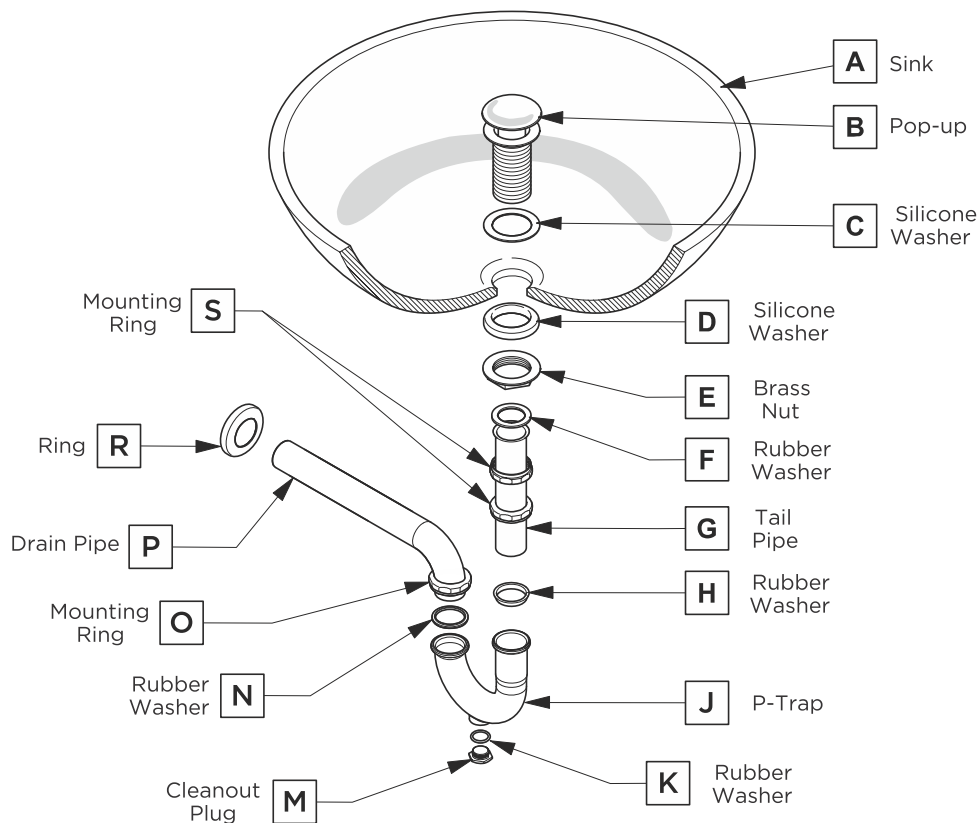
Install side cabinet





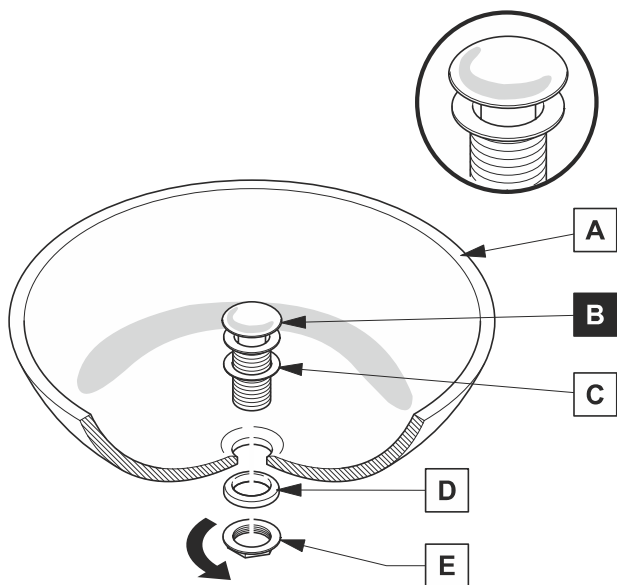
P-TRAP AND POP-UP INSTALLATION INSTRUCTIONS

Your item may appear slightly different from the illustration



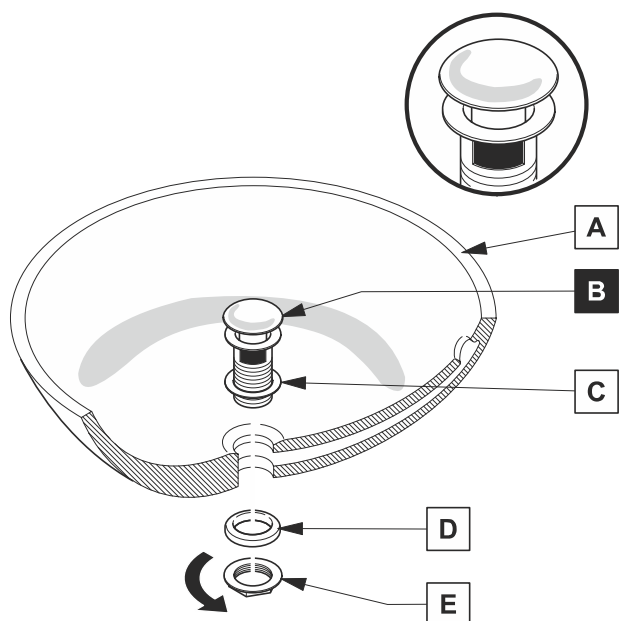
POP-UP INSTALLATION

FOR SINKS WITHOUT OVERFLOW



OR

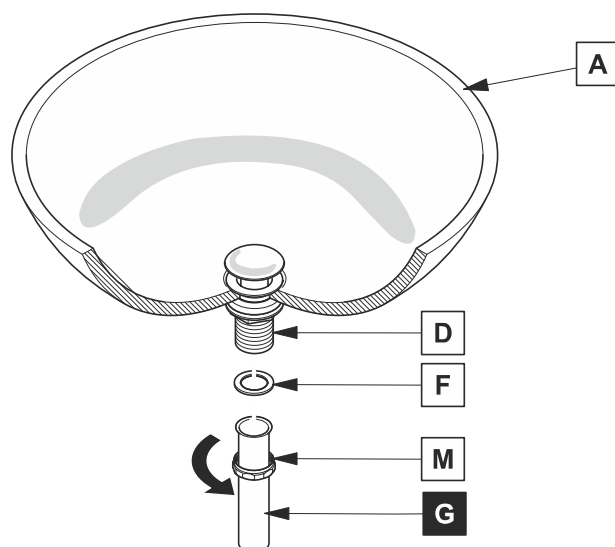
FOR SINKS WITH OVERFLOW



P-TRAP INSTALLATION

1

Install tail pipe (G)



2

Install p-trap (J)

