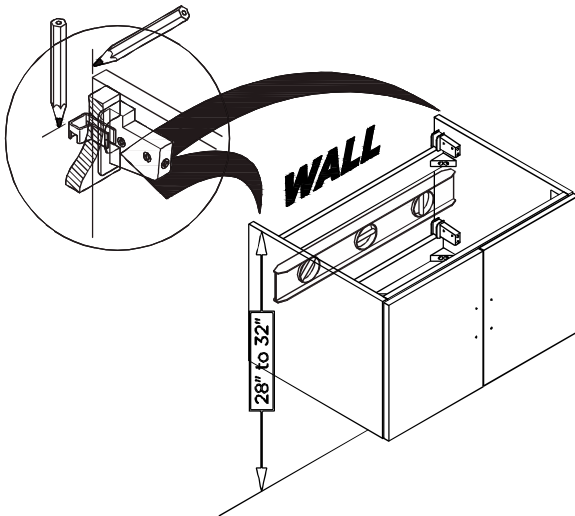


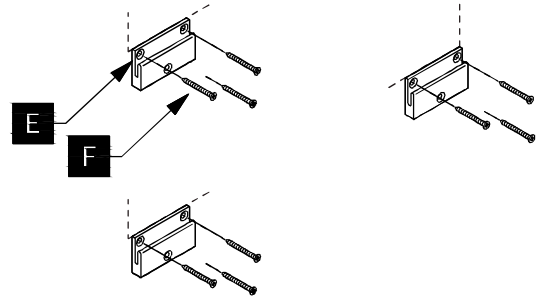
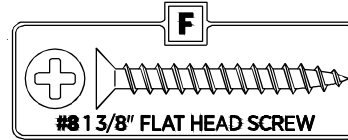


LEXORA®
HOME OFFICE & HOME FURNISHINGS

- 1** Place cabinet (D) in the designated location and mark bracket position on the wall.

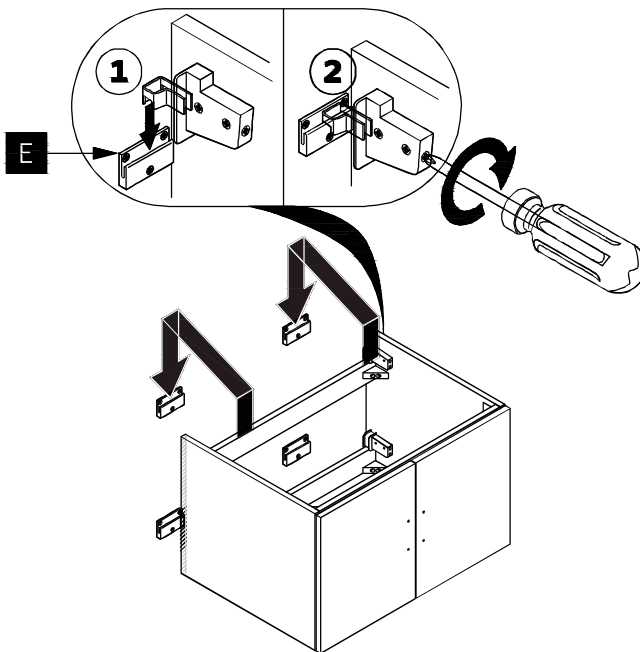


- 2** Attach the wall brackets (E) to the wall with the screws (F).

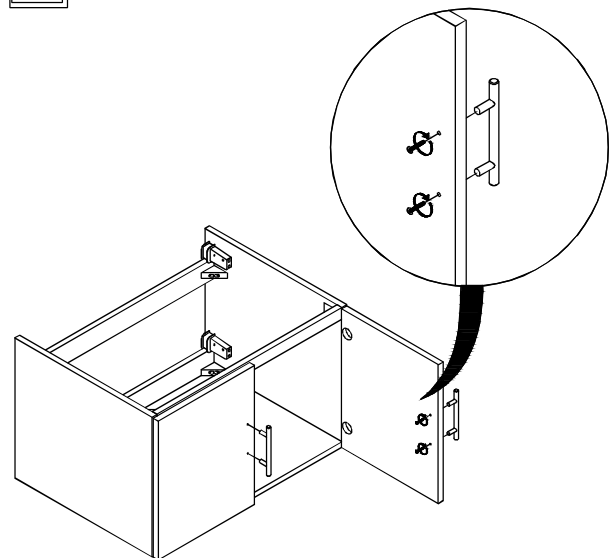


IMPORTANT: Consult an expert for the proper screws/bolts to use when attaching to various constructions. Screws provided do not attach to all wall construction types. Anchors are not required if brackets are installed in stud.

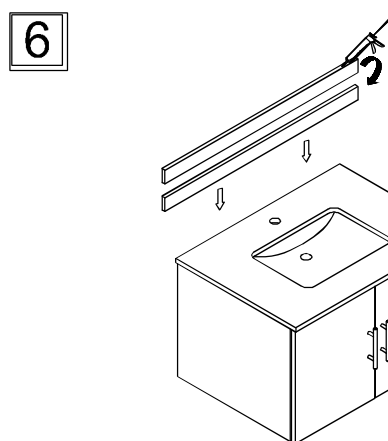
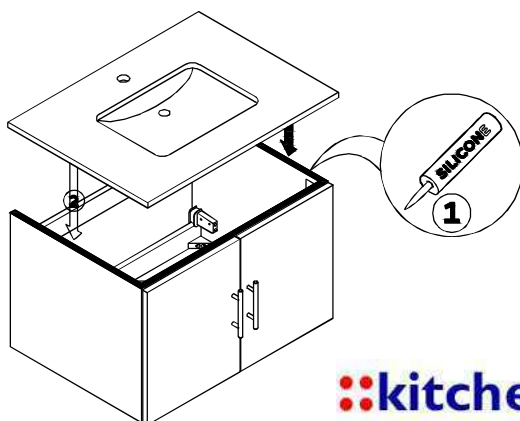
- 3** Apply a bead of silicone and hang the cabinet (D) on the brackets.



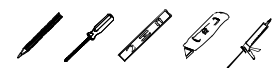
- 4** Attach the handles to the cabinet.



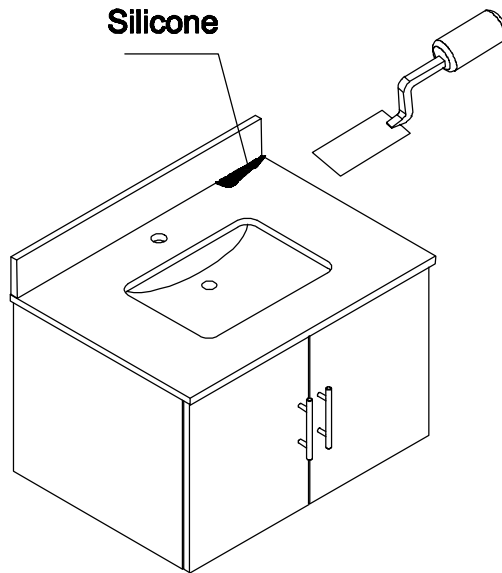
- 5** Put a bead of silicone on the top of the cabinet (G) then place sink (H) on the top of it.



TOOLS REQUIRED (not supplied)

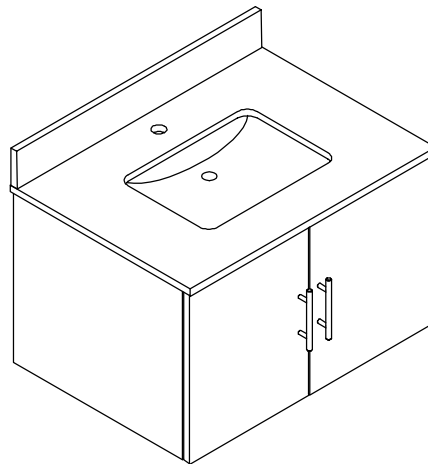


7



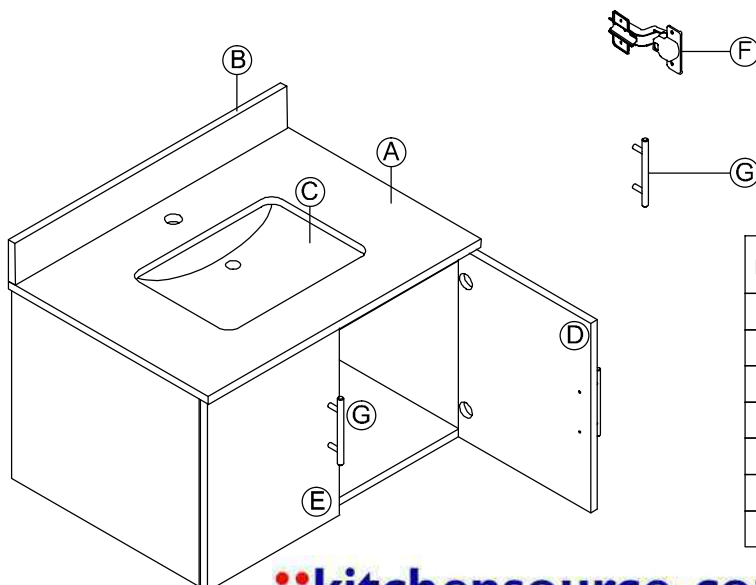
INSTALLATION

8



INSTALLATION

9



| PART# | DESCRIPTION | QUANTITY |
|-------|--------------|----------|
| A | Countertop | 1 |
| B | Backsplash | 1 |
| C | Basin | 1 |
| D | Door (right) | 1 |
| E | Door (left) | 1 |
| F | Hinge (door) | 4 |
| G | handle | 2 |