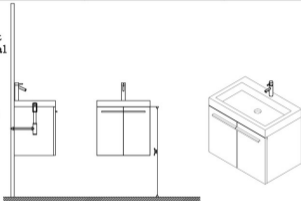


**INSTALLATION INSTRUCTIONS****Confidential : A****SKU : JS-50124-CAB****SIZE:590W\*456D\*540H****PROHIBIT COPY**

.Prior to installation please check received items against the Packing List Please report any missing items to your local dealer immediatelo.

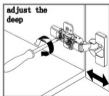
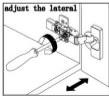
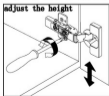
.Protect all surfaces from sharp objects,high heat sources,direct prolonged sunlight and chemical hazards.

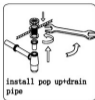
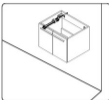
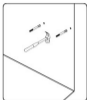
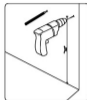
.Professional installation recommended.

**PACKING LIST****1. Main cabinet****2. resin basin****3. Pop up+Drain pipe****4. Faucet****5. Expansion screw**

**REQUIRED TOOLS**

**DRAWER SLIDER ATTACHMENT AND DETACHMENT**

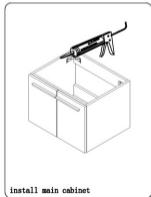
**INSTALLATION AND ADJUSTMENT OF HINGE**




install pop up drain pipe



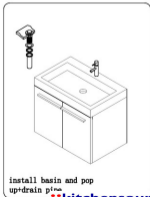
install faucet



install main cabinet



install top and faucet



install basin and pop up drain pipe