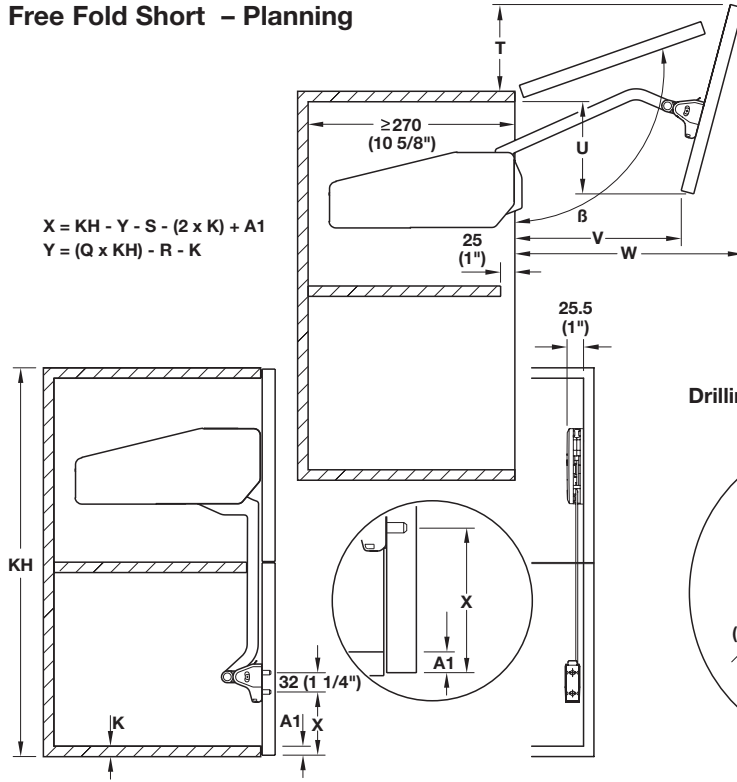
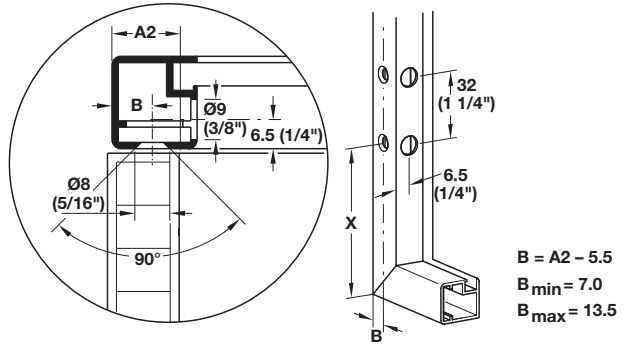


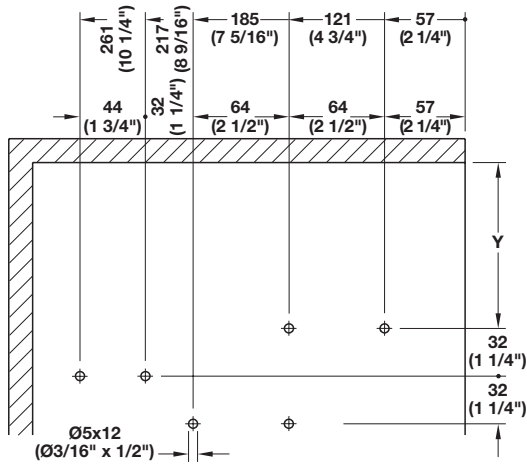
Free Fold Short – Planning



Drilling pattern for adapter for doors with 20 mm aluminum frame.



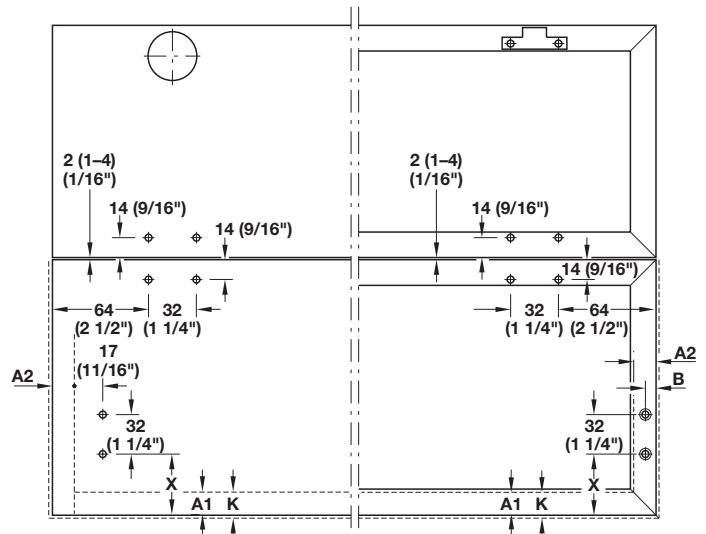
Drilling pattern for cabinet



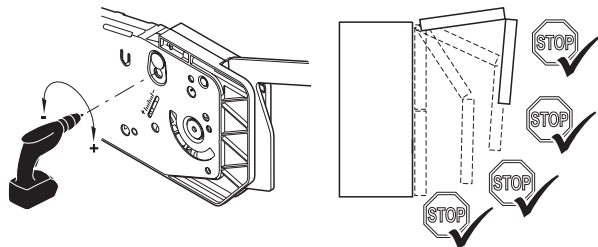
Cabinet Height KH	$\beta^\circ$	Q	R	S	T	U	V	W
580-650	≈108-95	1.2	589	377	119-40	126-197	227-207	375-430
650-730	≈107-94	1.2	664	409	124-38	147-224	238-215	411-470
710-790	≈108-95	1.2	736	439	136-46	161-233	250-219	439-500
770-840	≈108-95	1.0	644	467	146-43	179-223	267-200	466-527
840-910	≈108-98	1.2	882	501	154-70	195-248	272-231	502-559
910-970	≈107-98	1.1	865	533	160-78	214-246	282-225	536-588
960-1010	≈107-100	1.1	915	557	170-99	228-251	295-240	560-605
1000-1067	≈107-102	1.1	954	576	177-120	239-256	306-256	578-616

9

Front processing



Power adjustment of fitting



Dimensions in mm  
Inches are approximate

Dimensional data not binding. We reserve the right to alter specifications without notice.