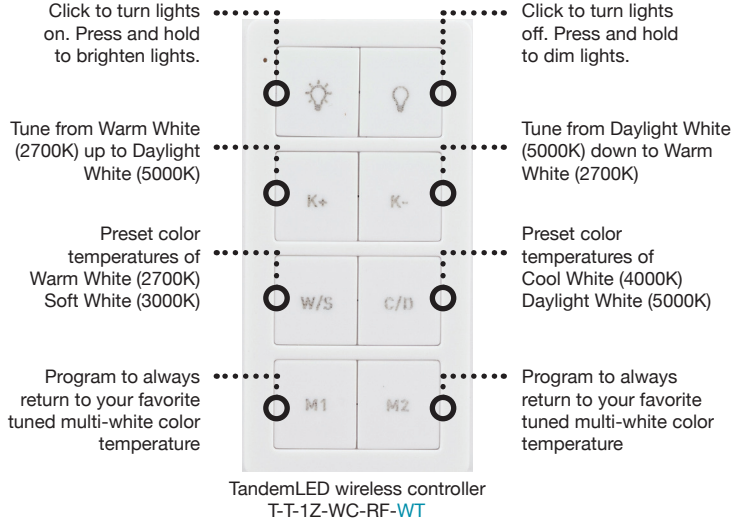


# TandemLED™ Wireless Controller

## Installation Instructions Overview

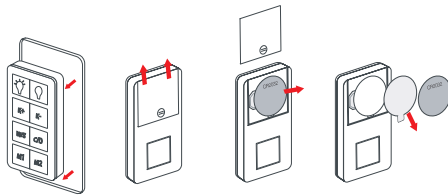


**Part Number**  
T-T-1Z-WC-RF-Color

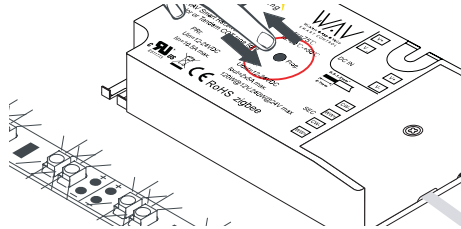
**Description**  
TandemLED™ wireless controller. Control 1 zone of lights, tune the white color temperature of the lights, dim lights and turn off / on. Use with WAV Smart Receiver (T-TWAV-WR-120) or WAV Smart Receiver / Power Supply (T-TWAV-60W-PSR). Available in Almond (AL), Black (BK), Brown (BR), Grey (GR), or White (WT).

## Pairing WAV Smart Receiver (T-TWAV-WR-120) to Wireless Controller

Pairing Instructions – if pairing to a Smart Home Hub, visit [www.Vimeo.com/Channels/WAVSmartControl](http://www.Vimeo.com/Channels/WAVSmartControl)

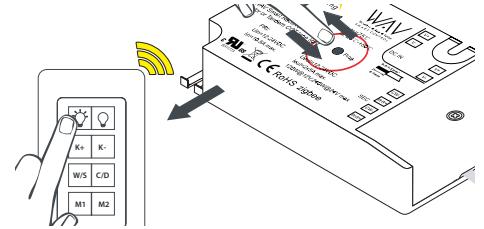


1. Remove Controller from back plate, slide battery compartment open, remove battery, and discard clear plastic tab. Reinsert battery, replace cover.



2. If setting WAV Smart Receiver for the first time, clear the memory by pressing and holding the “Prog” button until the lights blink twice.

When pairing the WAV Smart Receiver, you DO NOT need to clear the memory each time. Follow Step 3 to pair.

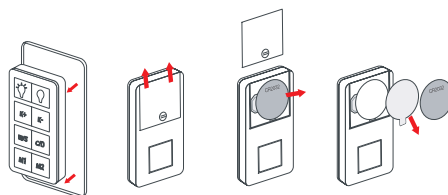


3. Very quickly, click and release the “Prog” button and, within 5 seconds, quickly click and release the “On Light Bulb” button on the Controller. When lights blink once, Controller and Receiver are paired.

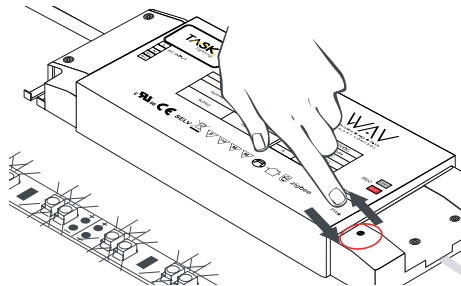
**NOTE:** when pairing additional controllers to the same receiver, DO NOT clear the memory.

## Pairing WAV Smart Receiver / Power Supply (T-TWAV-60W-PSR) to Wireless Controller

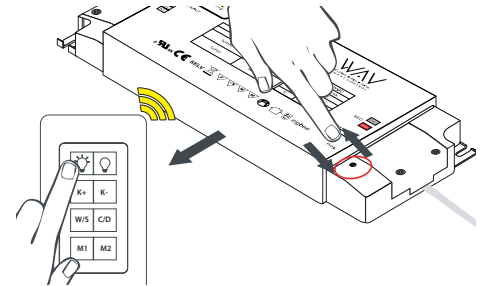
Pairing Instructions – if pairing to a Smart Home Hub, visit [www.Vimeo.com/Channels/WAVSmartControl](http://www.Vimeo.com/Channels/WAVSmartControl)



1. Remove Controller from back plate, slide battery compartment open, remove battery, and discard clear plastic tab. Reinsert battery, replace cover.



2. If setting WAV Smart Receiver / Power Supply for the first time, clear the memory by pressing and holding the “Prog” button until the lights blink twice.



3. Very quickly, click and release the “Prog” button and, within 5 seconds, quickly click and release the “On Light Bulb” button on the Controller. When lights blink once, Controller and Receiver are paired.

**NOTE:** when pairing additional controllers to the same receiver, DO NOT clear the memory.