

iMove



KESSEBÖHMER

i	A Frameless cabinet	inch mm
----------	----------------------------	------------

Drilling positions for the positioning tabs

Technical drawing showing drilling positions for the positioning tabs. Dimensions are provided in inches and millimeters:

- 7.48" (190)
- 5.59" (142)
- 13/64" (Ø5)
- ≥ 1/4" (≥ 6)
- 6.61" (168)
- 8.11" (206)
- 1.65" (42)
- 0.28" (7)

A.1					inch mm
------------	--	--	--	--	------------

Diagram A.1 illustrates the installation of a cabinet handle. The top part shows the handle being attached to the cabinet door with a screwdriver. The bottom part shows the handle being adjusted to the desired position.

A.2			inch mm
------------	--	--	------------

Diagram A.2 illustrates the drilling of a hole in the cabinet door. A power drill is used to drill a hole. A technical drawing shows the hole dimensions: 13/64" (Ø5) and ≥ 1/4" (≥ 6).

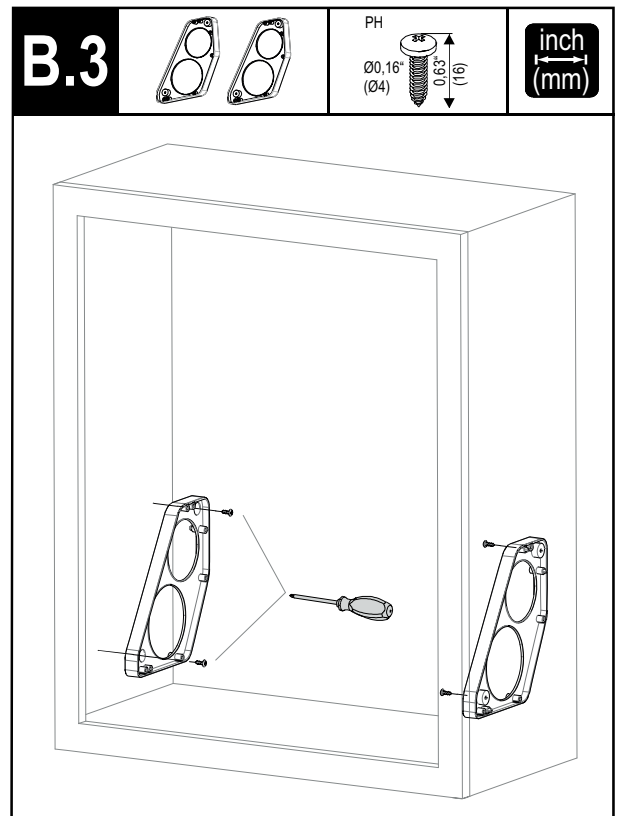
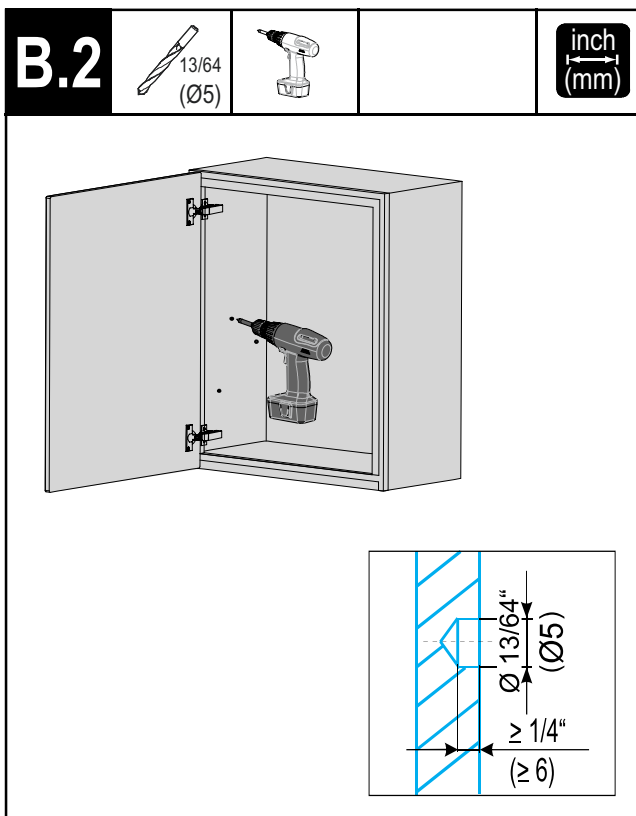
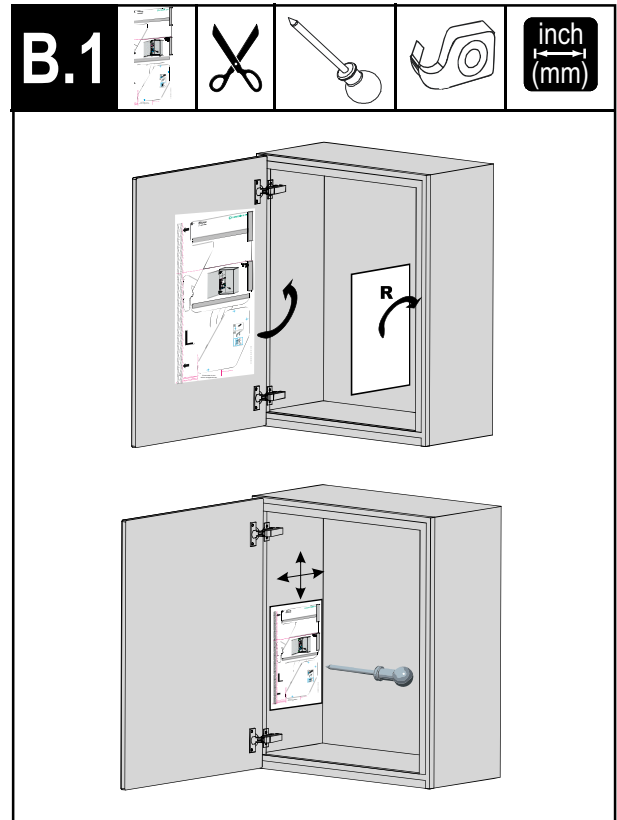
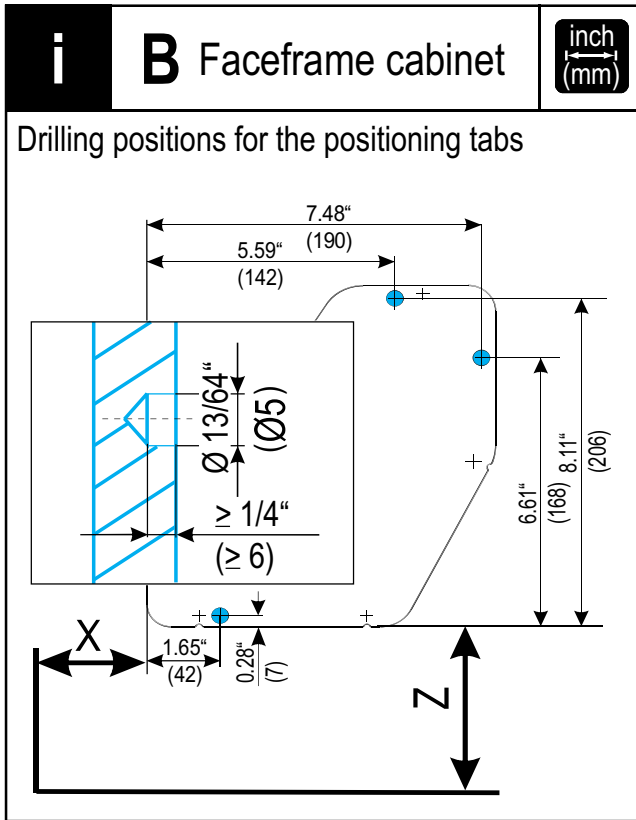
A.3	Frameless cabinet A Ø0,18" (Ø4,5) 8x 1,97" (50)	inch mm
------------	---	------------

Diagram A.3 illustrates the installation of a frameless cabinet. The cabinet is shown being inserted into the cabinet door. A technical drawing shows the cabinet dimensions: Ø0,18" (Ø4,5) 8x and 1,97" (50).

iMove



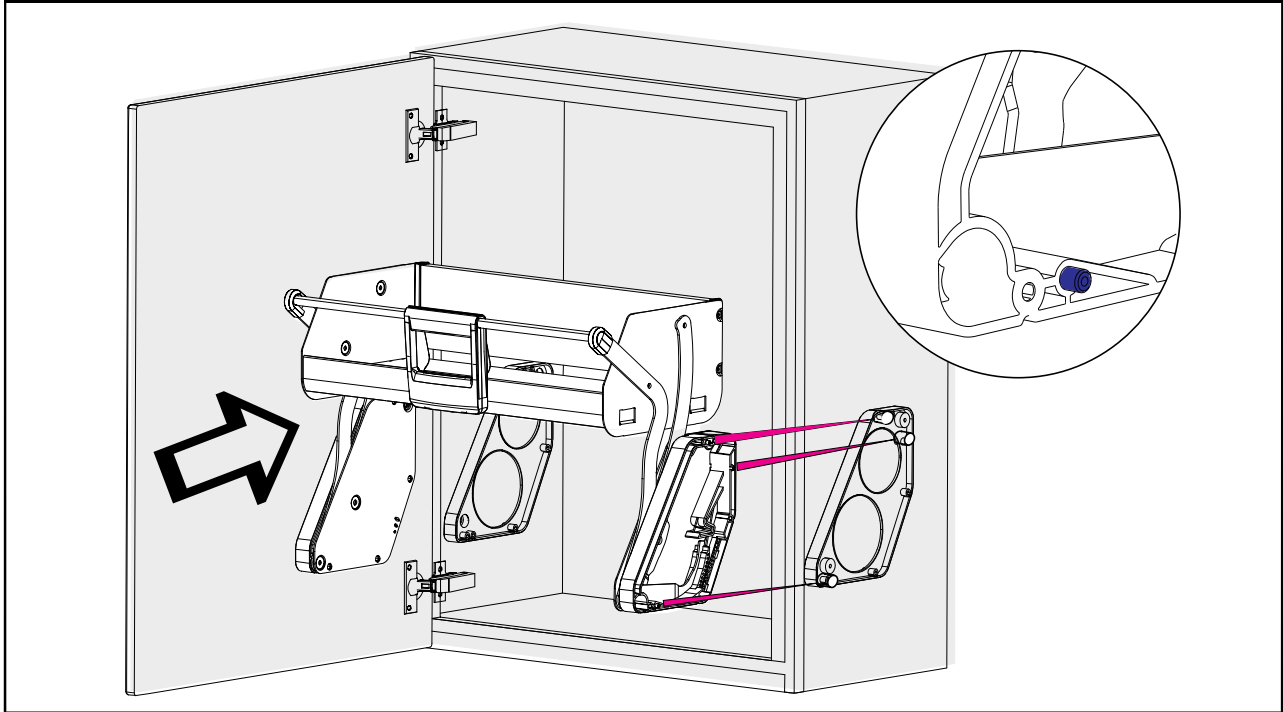
KESSEBÖHMER





B.4

inch
mm



B.5



Ø0,18"
(Ø4,5) 8x
2,76"
(70)

inch
mm

