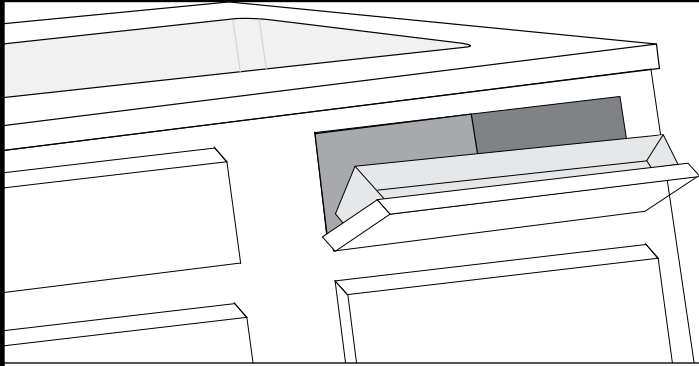


# TIPOUT TRAY INSTALLATION INSTRUCTIONS

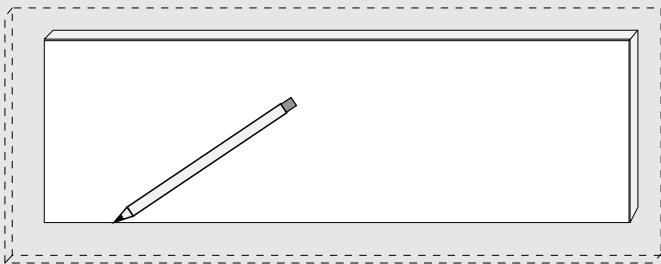


This literature contains all the information you need to install your Tipout Tray.

**\*IMPORTANT:** Before you begin, familiarize yourself with the kit contents, identify all parts, read through this instruction information, and have the necessary tools on hand to get started.

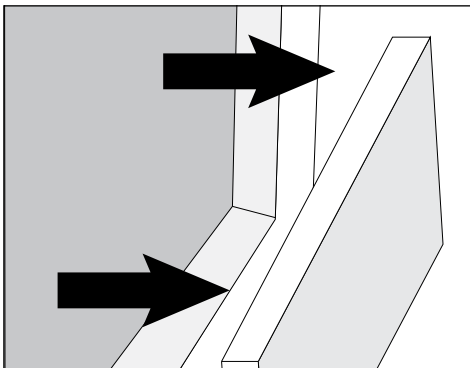
**TOOLS REQUIRED:**

- 3/32" Drill Bit
- Electric Hand Drill
- #2 Phillips Head Screwdriver



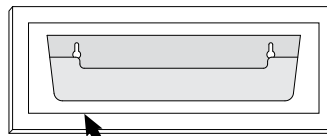
**STEP 1**

Using a sharp soft lead pencil (so you can erase later), trace the frame perimeter on the false front panel inside. Mark a small "T" for top panel reference.

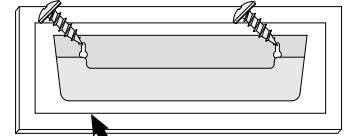


**STEP 2**

Now examine the manner in which your false front panel is attached to the surrounding cabinet construction. After determining the best way, carefully remove the false front panel.



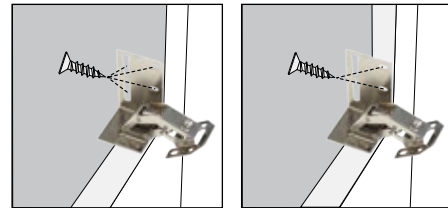
Overlay marked in Step 1



Overlay marked in Step 1

**STEP 3**

Grab your Tip-Out Tray. Center the Tip-Out Tray in the middle of the overlay that you marked in STEP 1. Mark the slot centers (see illustrations). Remove the tray and drill the pilot holes. Screw in Pan head screws, but not quite all the way so that you can slide the tray on at the end of STEP 6. By leaving the screws slightly loose, removal and cleaning of the tray is much easier.



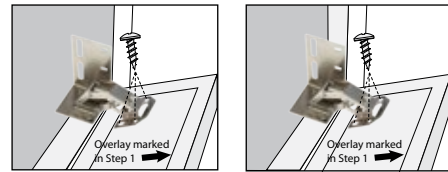
**STEP 4**

Using a 3/32" drill bit, prepare to drill pilot holes at locations described below.

**\*IMPORTANT:** Avoid drilling too deep by wrapping masking tape 5/16" from end of bit. This is equal to 5 threads of the Pan Head Screw. Drill no deeper than front edge of tape.

Now match the hinge to the left side of the frame opening and mark the hole centers. If opening has a frame edge, mark only front two hole centers (see illustration samples). Repeat for the right side of opening and then drill pilot holes at the marked locations.

Using the Pan head screws, attach the hinge to the panel through the holes.



**STEP 5**

Match the hinge plate to the lower left corner of the panel overlay outline marked in STEP 1 and mark the slot centers. Slot outlines must be one on top of the other. Repeat on lower right corner and drill pilot holes at the 4 locations you just marked (2 lower left & 2 lower right).

Using the flat head screws, install left and then right hinges at pilot hole locations. Screw hinge at top pilot hole first. Then screw in hinge bottom with a second flat head screw.

**STEP 6**

Now erase the overlay outline marked in STEP 1. Replace the tray on the two remaining Pan head screws. Congratulations, your Tip-Out Tray is now installed.