

### STEP 4

Adjust front wheel position for right hand opening. (Fig E)

Attach feet (C) using screw (3) (Fig F)

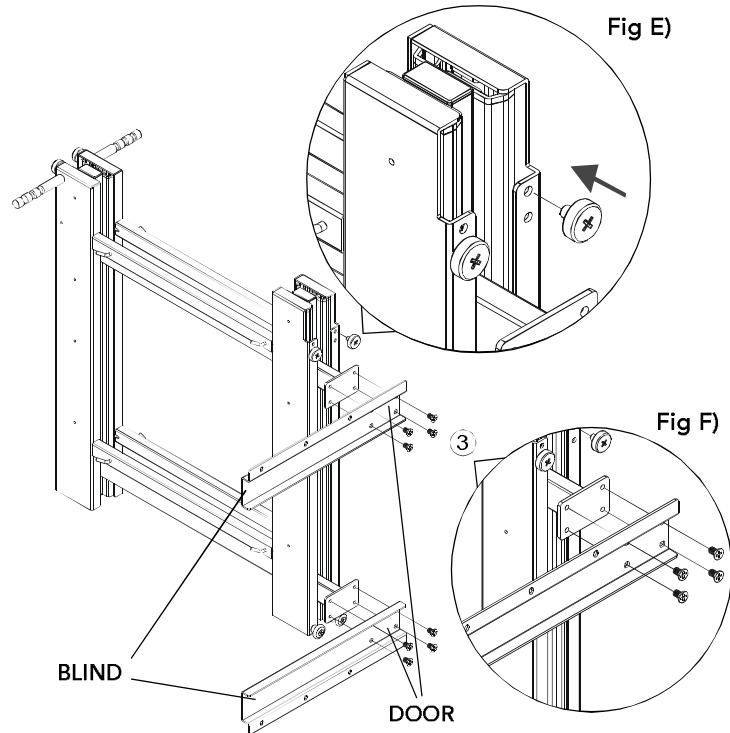


Fig G)

### STEP 5

Secure the feet (C) to the base (A) using screw (4) (Fig G)

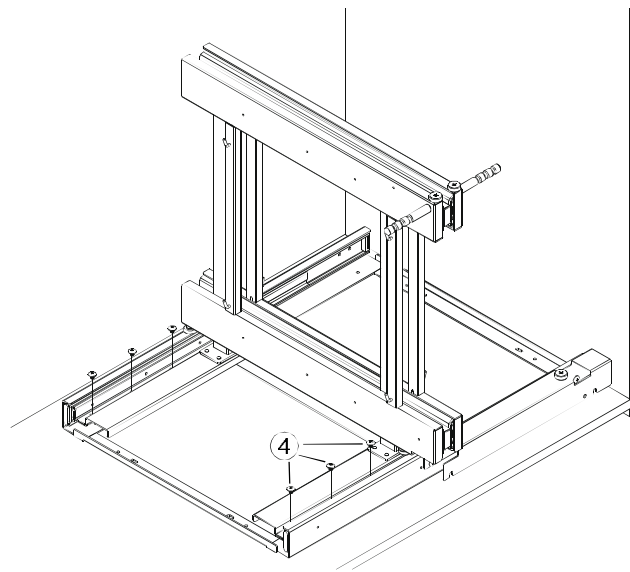


Fig H1)

Attach Hooks (Orion Gray):

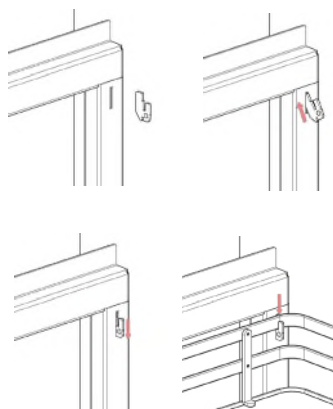
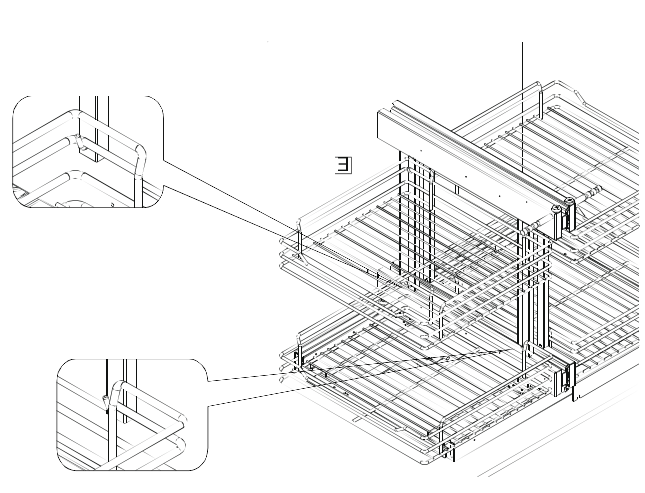
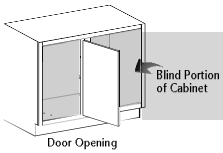


Fig H2)

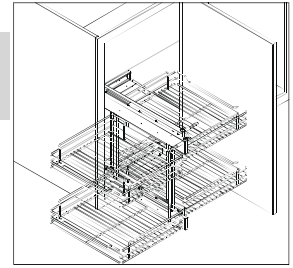


Attach hooks (Orion Gray version only) (Fig H1) and hang the baskets as shown. (Fig H2)

**NOTE:** Baskets show in forward position. They can be moved to the rearward position for additional clearance. Bottom basket must hang from the 2nd wire from the top.



# 5PSP-18 (LEFT HANDED DOOR/18" OPENING)

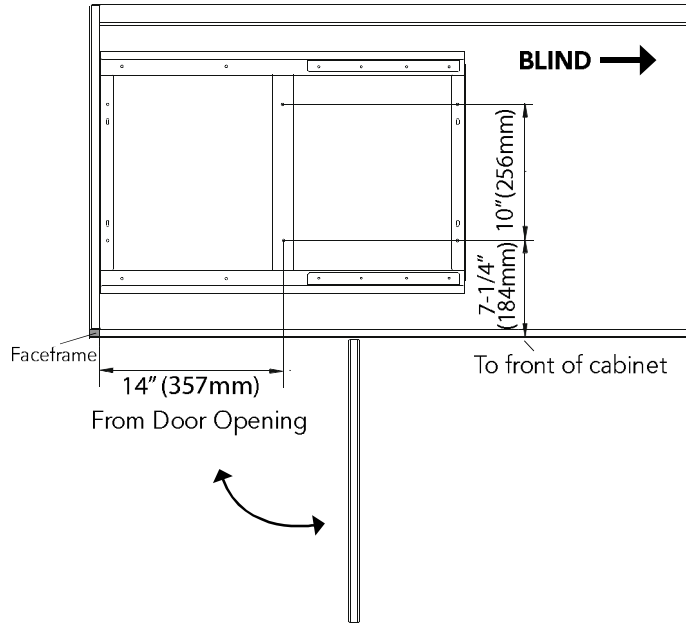


## STEP 1

### Mount Base (Fig A)

Note: If installing into a face frame cabinet, Slide Base A must be flush with the face frame opening.

Fig A)

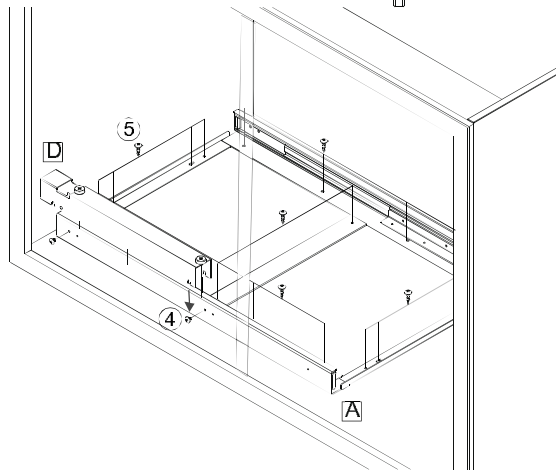


## STEP 2

Attach the base (A) with slide channel (d) to floor of cabinet. (Fig B)

**NOTE:** Pre-starting the mounting screws (4) is recommended

Fig B)



## STEP 3

Attach Handles.

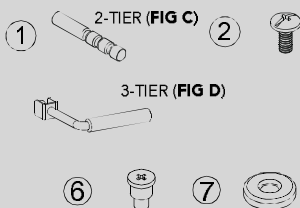


Fig C)

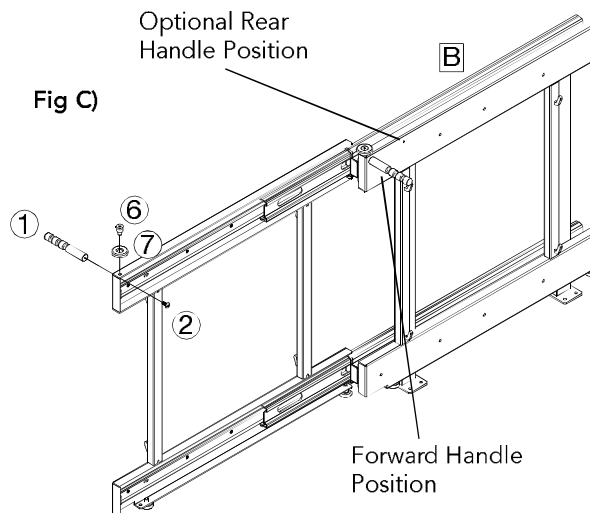
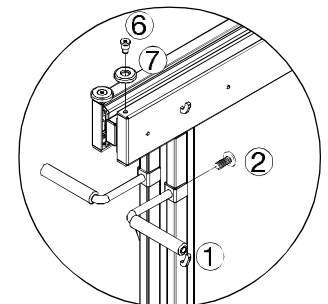


Fig D)



3-Tier Handle Position

#### STEP 4

Adjust front wheel position for left hand opening. (Fig E)

Attach feet (C) using screw (3) (Fig F)



Fig E)

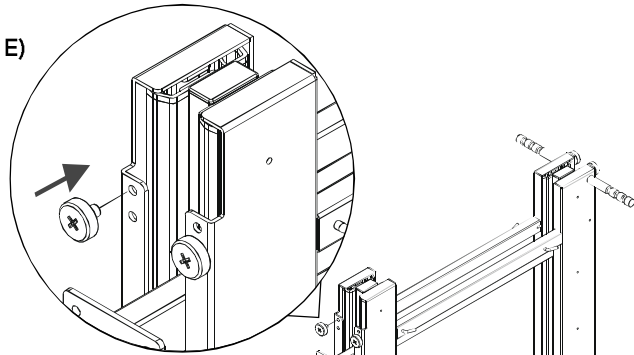
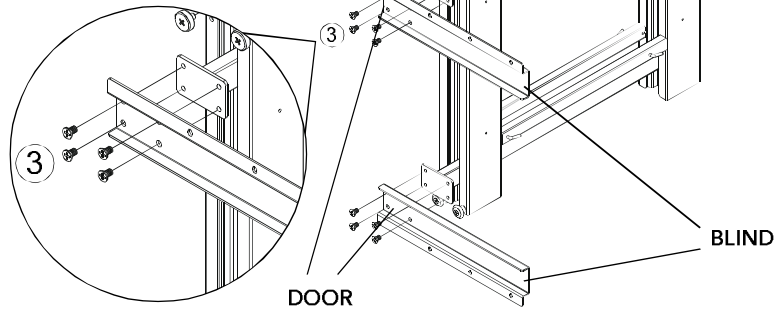


Fig F)



#### STEP 5

Secure the feet (C) to the base (A) using screw (4) (Fig G)



Fig G)

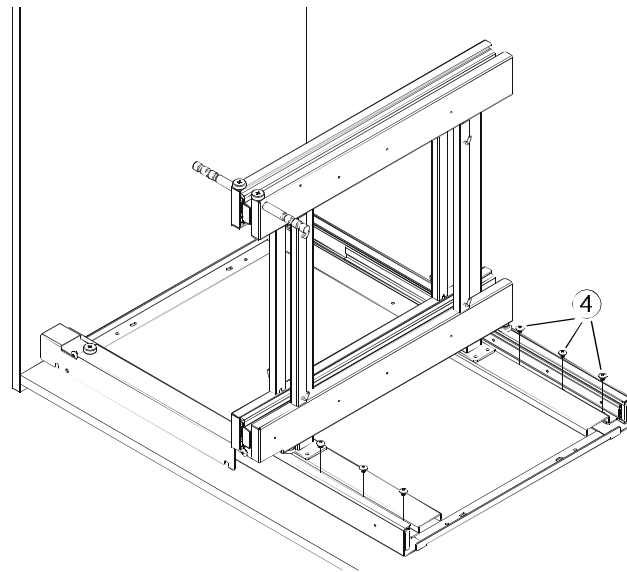


Fig H1)

Attach Hooks (Orion Gray):

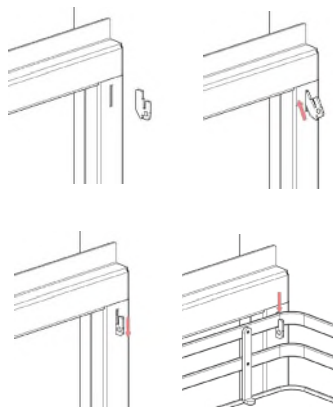
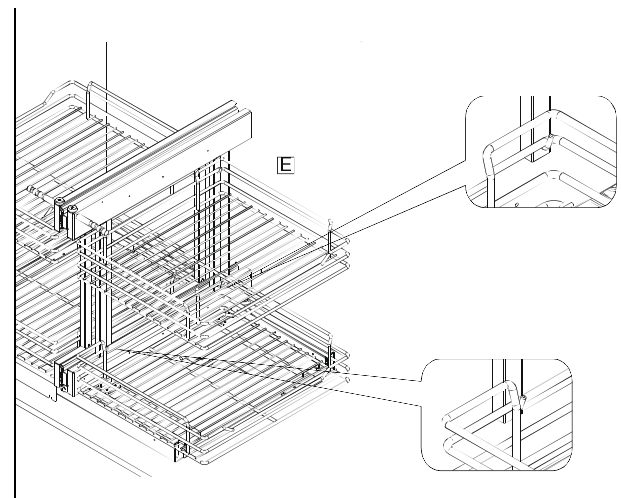
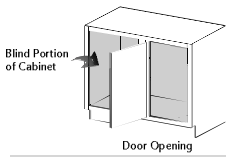


Fig H2)

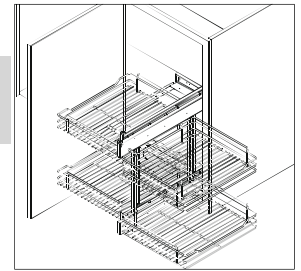


Attach hooks (Orion Gray version only) (Fig H1) and hang the baskets as shown. (Fig H2)

**NOTE:** Baskets show in forward position. They can be moved to the rearward position for additional clearance. Bottom basket must hang from the 2nd wire from the top.



# 5PSP-18 (RIGHT HANDED DOOR/18" OPENING)

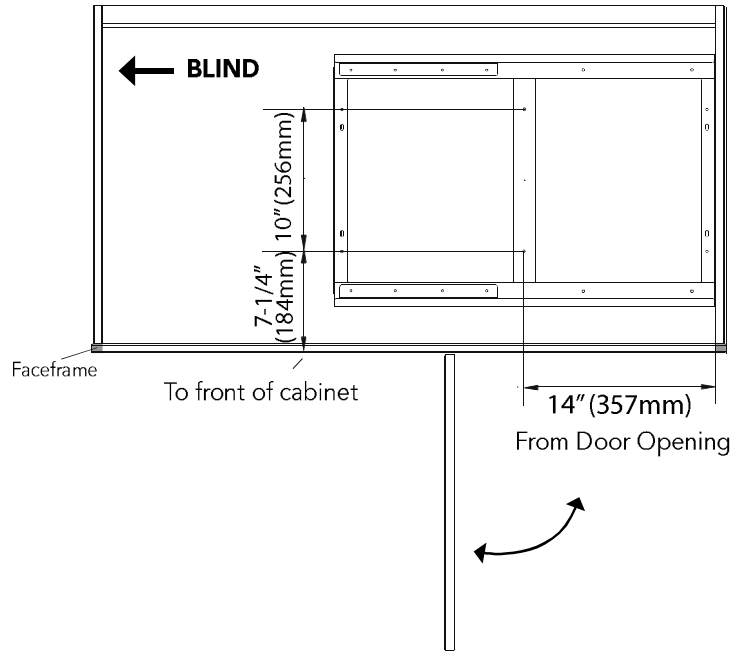


## STEP 1

### Mount Base (Fig A)

Note: If installing into a face frame cabinet, Slide Base A must be flush with the face frame opening.

Fig A)



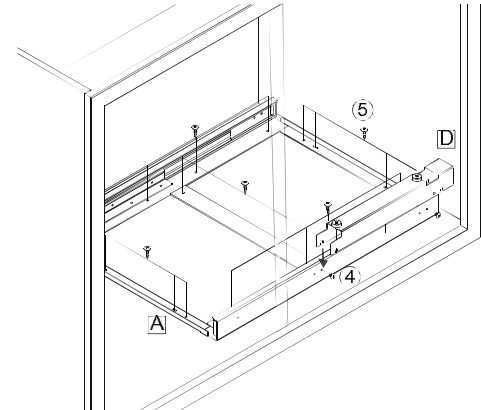
## STEP 2

Attach the base (A) with slide channel (d) to floor of cabinet (Fig B)

**NOTE:** Pre-starting the mounting screws (4) is recommended



Fig B)



## STEP 3

Attach Handles.

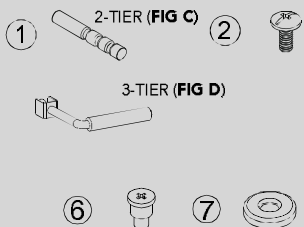


Fig C)

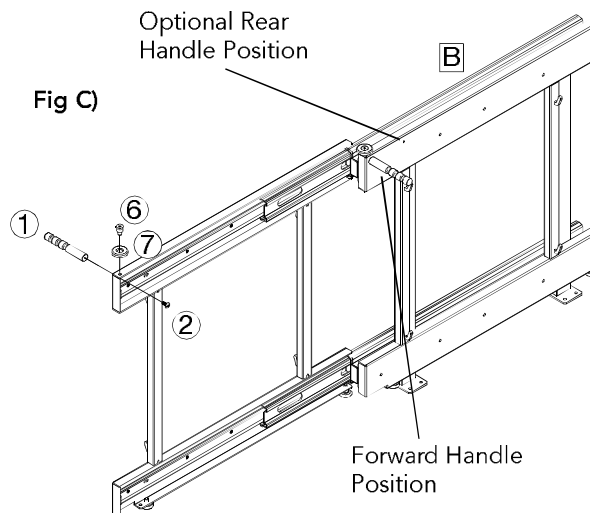
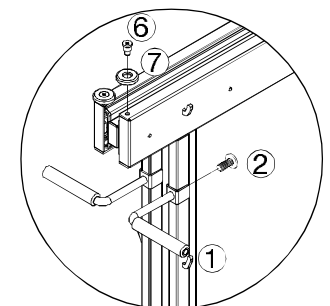


Fig D)



3-Tier Handle Position

#### STEP 4

Adjust front wheel position for right hand opening. (Fig E)

Attach feet (C) using screw (3) (Fig F)

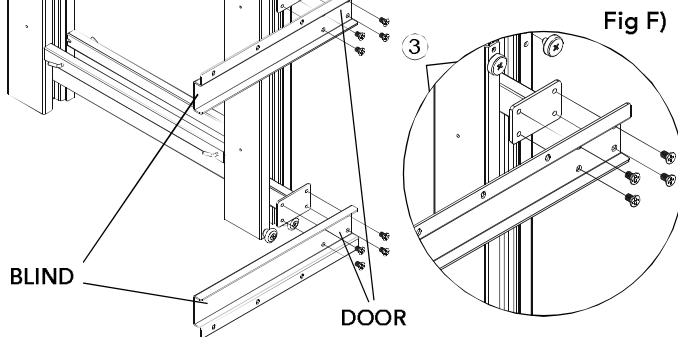
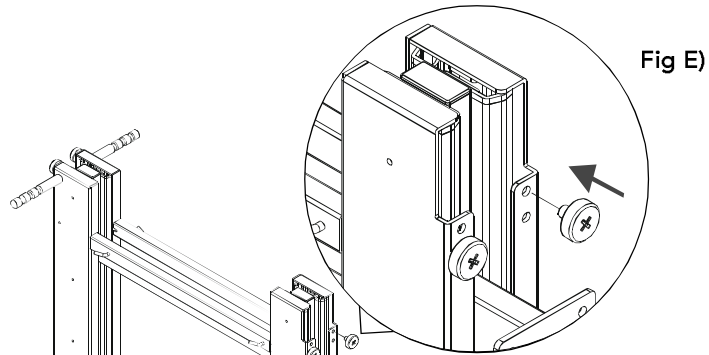
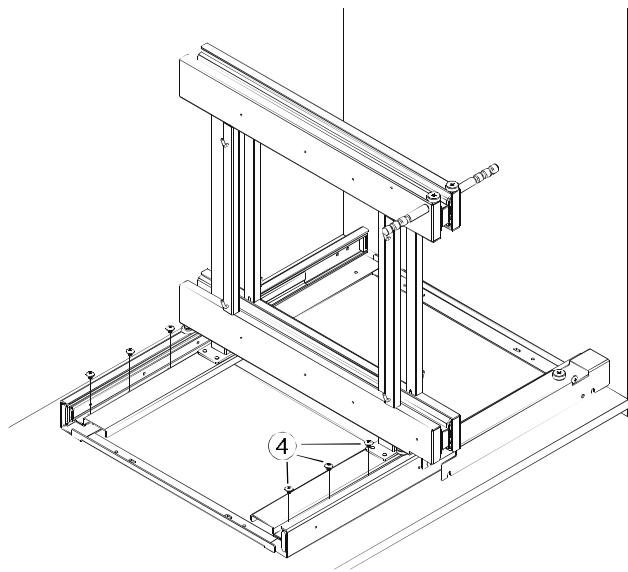


Fig G)



#### STEP 5

Secure the feet (C) to the base (A) using screw (4) (Fig G)



Fig H1)

Attach Hooks (Orion Gray):

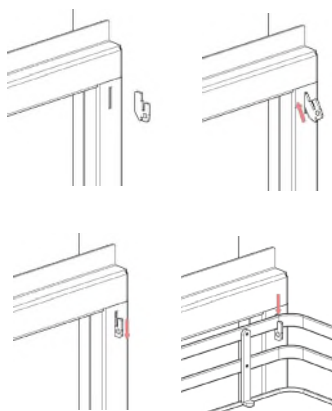
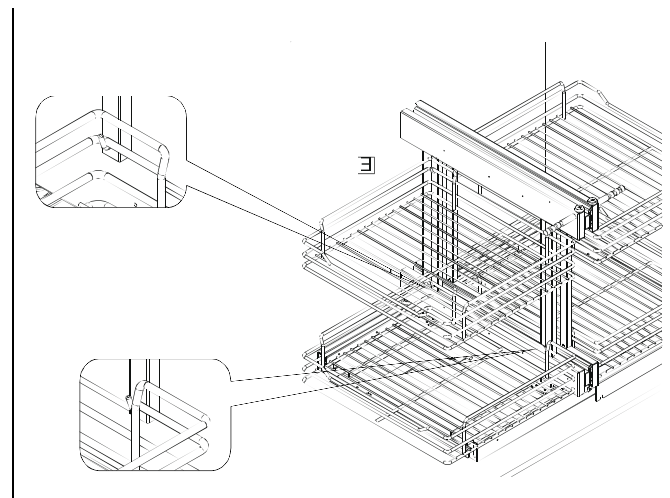


Fig H2)



#### STEP 6

Attach hooks (Orion Gray version only) (Fig H1) and hang the baskets as shown. (Fig H2)

**NOTE:** Baskets show in forward position. They can be moved to the rearward position for additional clearance. Bottom basket must hang from the 2nd wire from the top.