

Pull-out Table Systems

Rapid Pull-Out Table, cantilever

600 mm (23 5/8") wide cabinets

Load capacity: **100 kg (220 lbs.)**

(for evenly distributed loads)

Consisting of:

- housing with table top
- 4 telescopic guides
- front panel

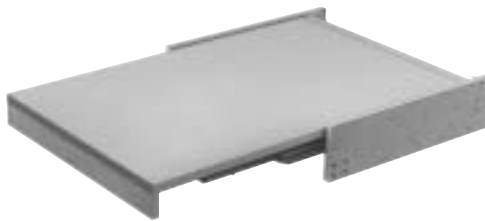
Finish: Wood

Table top: with Melamine plastic coating,
white/gray dotted with pale colored
spots or maple

Telescopic guides: beech

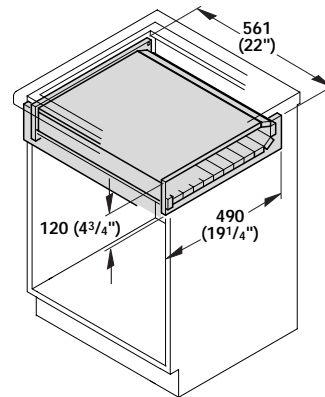
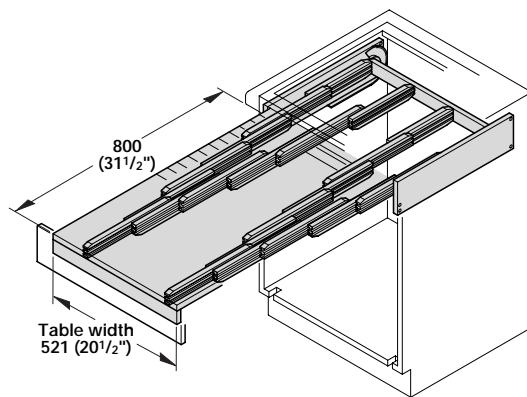
Finish: table top	Cat. No.
white/gray dotted	505.58.703
maple	505.58.103

Packing: 1 pc.



Advantages

- Self-supporting table
- A drawer front panel can be screw-mounted directly onto the table front panel.
- The system can be subsequently installed in place of a drawer or between two cabinets.
- Once installed the fitting is not visible.



Top Flex Pull-Out Table System

- Adds up to 810 mm (32") of additional worktop space.
- Extension fitting can support any width surface up to 900 mm (35 1/2").
- Maximum load 15kg. (33 lbs.)
- Table top and front panel are customer supplied.

Dimensions:

Extended length: 810 mm (32")

Cabinet width: 450 – 900 mm (17 3/4" – 35 1/2")

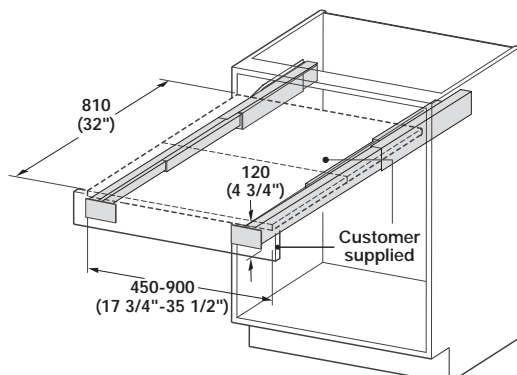
Interior cabinet opening height: 120 mm (4 3/4")

Minimum cabinet depth: 510 mm (20")

Finish: steel, plated

Cat. No.	505.70.200
----------	------------

Packing: 1 set



Organizational Products for Kitchen, Bath, Closet and Home Entertainment



- As the pull-out table is extended, the front panel drops down automatically until the top is flush with the table.