



BOXMILANO



PRE-ASSEMBLED BOX WITH ALUROLL AND PRE-CHARGED WEIGHT COMPENSATOR

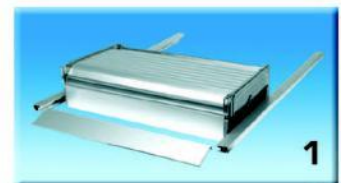
∴kitchensource.com

☎ 1.800.667.8721

BOXMILANO

ALUROLL
2025

PRE-ASSEMBLED BOX WITH ALUROLL AND PRE-CHARGED WEIGHT COMPENSATOR

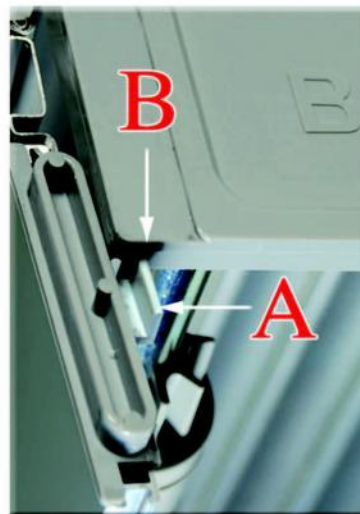


BOXMILANO

ASSEMBLY INSTRUCTIONS



1-INSERT BOXMILANO HALF-WAY INTO THE CABINET



2-PULL OUT MM. 80 OF THE ROLL
REST THE STOP "A" AGAINST THE
COILING GUIDE "B"



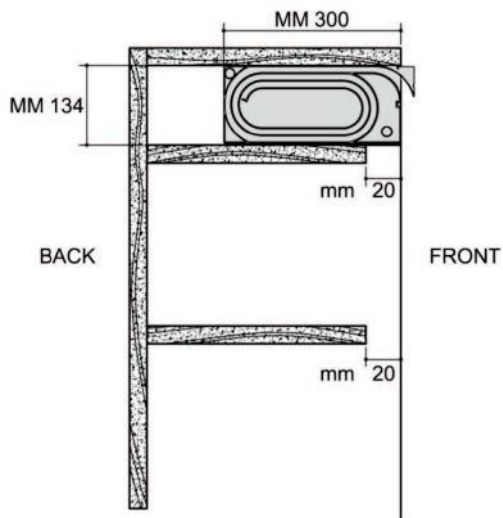
3-INSERT SIDE GUIDES INTO
BOXMILANO (SEE PICTURE 3A
ON THE OTHER SIDE)



4-CLIP ON TOP PROFILE



5-INSERT BOXMILANO IN TO THE CABINET
SCREW SIDE GUIDES ON + INSERT END-CAPS



DIMENSIONS BOXMILANO MM. 300 X 133

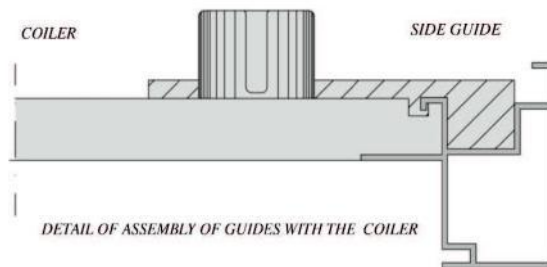
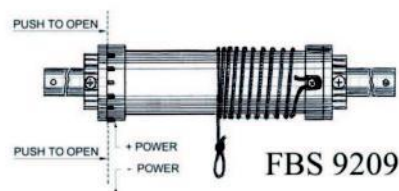
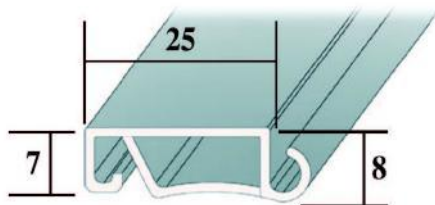


FIG.
3 A

ADJUSTING - 1/8th TURN -WEIGHT COMPENSATOR FOR BOXMILANO



FBS 9209



standard colours

U5
WIND
PERFORATED



A
WIND
PERFORATED



B
WIND
PERFORATED



SN
WIND
PERFORATED



M3
WIND
PERFORATED



L2
WIND
PERFORATED



M4
WIND
PERFORATED



U5
ALUMATT



A
SPAZZOLATO
BRUSHED



B
MILL - FINISH



SN
SAT. NAT.



M3
BIANCO
WHITE



L2
NERO OPACO
MATT BLACK



M4
BIANCO OPACO
MATT WHITE

