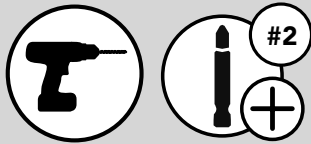


REV-A-SHELF®

INSTALLATION INSTRUCTIONS

SINGLE PULL-OUT BASKET

TOOLS REQUIRED:

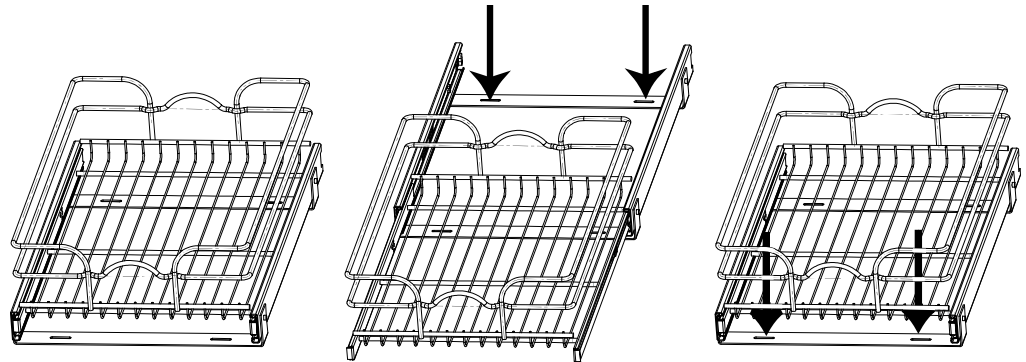


ESTIMATED ASSEMBLY TIME:

5 MIN

CARE AND MAINTENANCE:

Clean with a damp cloth and wipe parts dry.



Step 1. Place entire unit into cabinet at desired location. Make sure adequate space is available for door closing, etc.

Step 2. Slide drawer out half way to allow for installation of rear screws into cabinet floor

Step 3. Install front slides to cabinet floor with provided screws

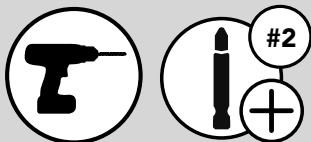
I-5WB1-0417

REV-A-SHELF®

INSTALLATION INSTRUCTIONS

SINGLE PULL-OUT BASKET

TOOLS REQUIRED:

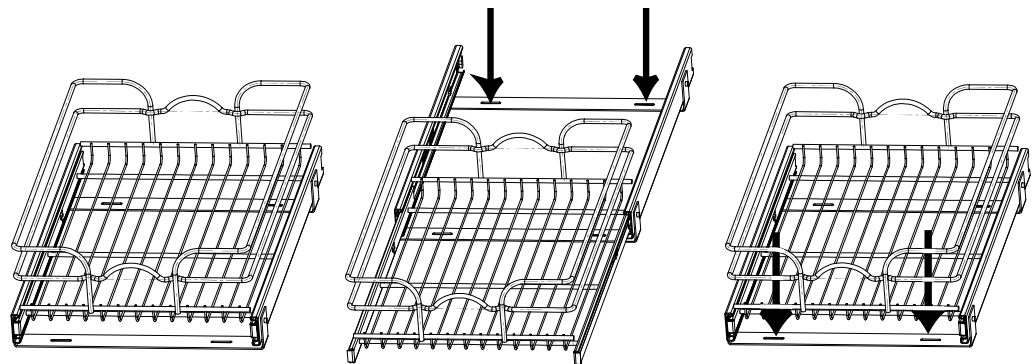


ESTIMATED ASSEMBLY TIME:

5 MIN

CARE AND MAINTENANCE:

Clean with a damp cloth and wipe parts dry.



Step 1. Place entire unit into cabinet at desired location. Make sure adequate space is available for door closing, etc.

Step 2. Slide drawer out half way to allow for installation of rear screws into cabinet floor

Step 3. Install front slides to cabinet floor with provided screws

I-5WB1-0417