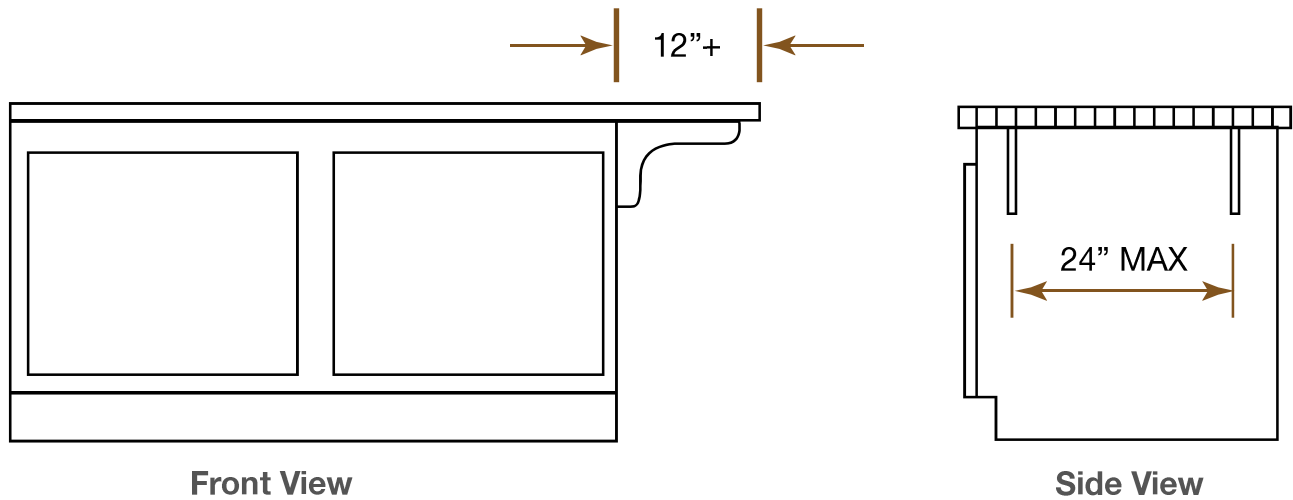




KITCHEN COUNTER TOP OVERHANG INSTRUCTIONS

Overhang On Ends

In the case that a block is placed on a base that results in an overhang of **12"** or more inches on the **ENDS**, the overhang portion must be stabilized by brackets. (See illustration below.)



Overhang On Sides

In the case that a block is placed on a base that results in an overhang of **8"** or more inches on the **SIDES**, the overhang portion must be stabilized by brackets. (See illustration below.)

