

# 303FUSFT Series

Heavy Duty Slides

## Installation Instructions

### 1. Cabinet Member Instructions:

Press release clip to disconnect drawer member from cabinet member.

Align cabinet member (using level if necessary) and place edge flush with the edge of the cabinet. Attach to cabinet using 3 #8 x 7/16" screws. 5 screws can be used for supporting heavy loads.

### 2. Drawer Member Installation:

Place front edge of each member against the rear face of the drawer front. Screw member with 3 #8 x 7/16" screws.

### 3. Drawer Installation:

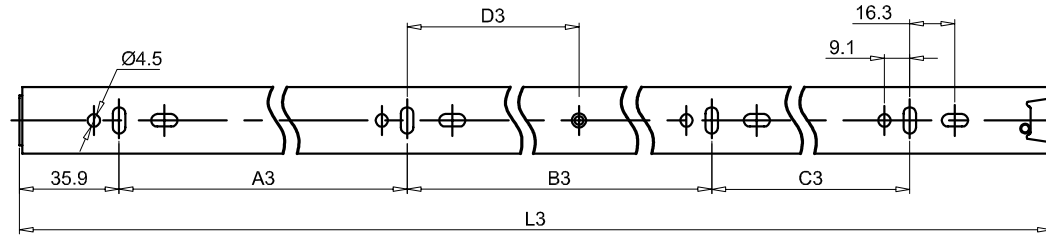
Align drawer members with cabinet members and slide into cabinet. When fully closed, the drawer slide release clip will lock into place.

#### • Note:

Face Frame Bracket is optional and can be used if drawer guide is not supported in the bottom of the corner of the cabinet opening.

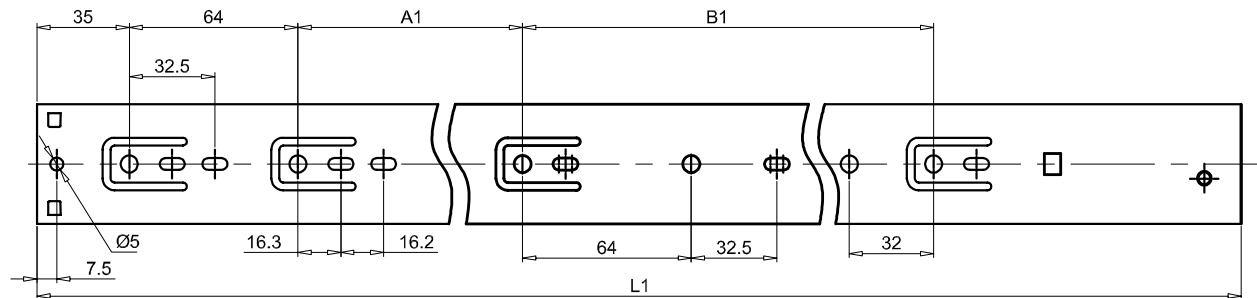
## Hole Pattern and Length Specifications

DRAWER MEMBER



Specifications	L3	A3	B3	C3	D3
303FUSFT12 - 12"	298	96	128	-	88
303FUSFT14 - 14"	348	128	128	-	75
303FUSFT16 - 16"	398	128	192	-	106
303FUSFT18 - 18"	448	160	192	-	94
303FUSFT20 - 20"	498	192	224	-	87
303FUSFT22 - 22"	548	224	224	-	85
303FUSFT24 - 24"	598	192	320	-	142
303FUSFT26 - 26"	648	192	224	160	167
303FUSFT28 - 28"	698	192	256	160	227

CABINET MEMBER



Specifications	L1	A1	B1
303FUSFT12 - 12"	300	94	-
303FUSFT14 - 14"	350	128	-
303FUSFT16 - 16"	400	160	-
303FUSFT18 - 18"	450	224	-
303FUSFT20 - 20"	500	256	-
303FUSFT22 - 22"	550	288	-
303FUSFT24 - 24"	600	352	-
303FUSFT26 - 26"	650	206	224
303FUSFT28 - 28"	700	256	224

**hardware resources**<sup>®</sup>

Bossier City, LA

www.HardwareResources.com

800.463.0660

**kitchen**source.com

1.800.667.8721