

Light-Duty

65 lb. Load Class

1/2" Side Clearance

Max. Drawer Width: 24"



4430 Full Extension Push-to-Open Low Profile Drawer Slide

The 4430 Full Extension Push-to-Open Low Profile Drawer Slide is designed to accommodate lighter and shallower low height drawers for home and commercial applications that are absent of knobs and pulls. Xpander™ adjustment allows fine tuning of Push-to-Open feature in wider drawers.

Applications

- Wood residential and commercial furniture
- Drawers absent of knobs, pulls or handles
- Lighter weight applications
- Short drawer height applications

Specifications

Model: 4430 Full Extension Push-to-Open Low Profile Drawer Slide

Module: Push-to-Open

Mounting: Side

Disconnect: Lever

Hole Pattern: 32mm and Traditional

Face Frame Mounting: Yes

Type: Ball Bearing

Travel: Full Extension

Finish: Zinc Plated

Length: 10", 12", 14", 16", 18", 20", 22", 24"

Clearance: .50" + .03" - 0" on each side

Height: 1.42" [36mm]

Packaging: Bulk Pack (4430B): all sizes - 10 pair per carton

Action: Telescopic

Slide Configuration: Unhanded

Rating

Load: 65 lb.

Max. Drawer Width: 24"

As with all Knap & Vogt drawer slides, the 4430 is designed to meet or exceed ANSI performance standards as established by BIFMA, BHMA and KCMA.

Accessories

4101B: Rear Mounting Bracket

4104B: Front Face Frame Bracket

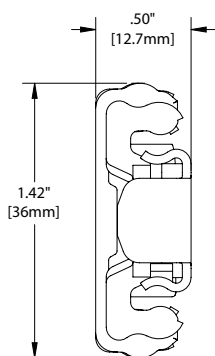
Hardware

#7 x 1/2" Phillips Pan Head

Warranty

Limited Lifetime Warranty

Profile



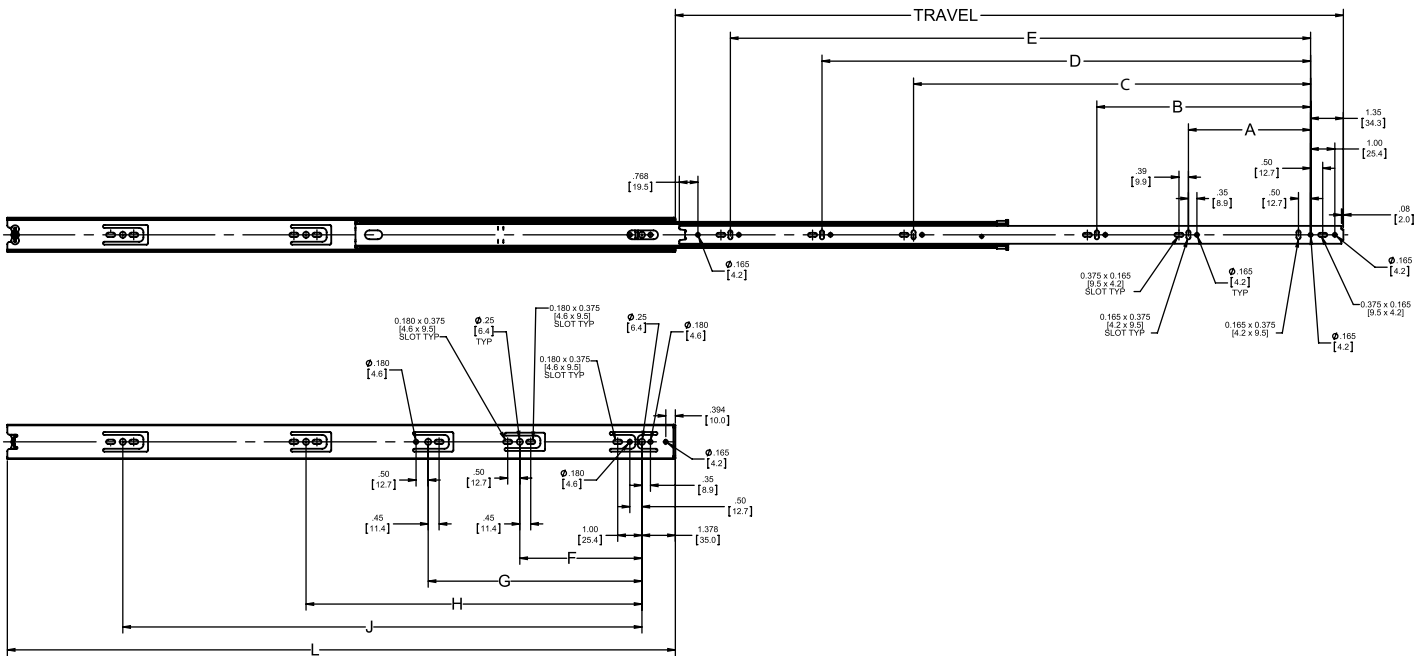
Clearance

1/2" + 1/32" - 0"

.50" + .03" - 0"

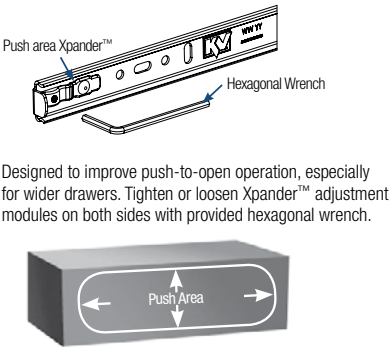
12.7mm + .8mm - 0mm

Charted Information

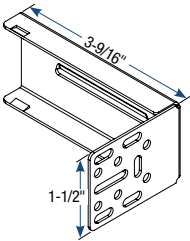
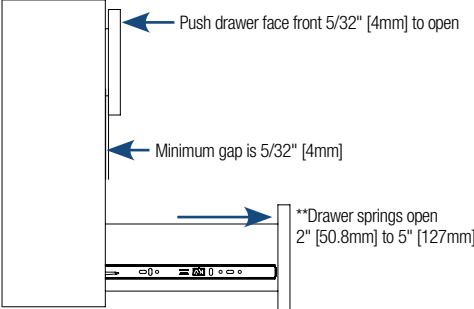


SKU Number	Slide Size inch/mm	Length inch/mm	Travel inch/mm	A inch/mm	B inch/mm	C inch/mm	D inch/mm	E inch/mm	F inch/mm	G Inch/mm	H Inch/mm	J Inch/mm
4430B 10	10" [250mm]	9.84" [250mm]	9.84" [250mm]	—	—	—	—	6.30" [160]	5.04" [128mm]	8.82" [224mm]	—	—
4430B 12	12" [300mm]	11.81" [300mm]	11.81" [300mm]	—	—	—	—	8.82" [224mm]	5.04" [128mm]	8.82" [224mm]	—	—
4430B 14	14" [350mm]	13.78" [350mm]	13.78" [350mm]	5.04" [128mm]	—	—	—	10.08" [256mm]	5.04" [128mm]	8.82" [224mm]	—	—
4430B 16	16" [400mm]	15.75" [400mm]	15.75" [400mm]	5.04" [128mm]	—	—	—	11.34" [288mm]	5.04" [128mm]	8.82" [224mm]	12.60" [320mm]	—
4430B 18	18" [450mm]	17.72" [450mm]	17.72" [450mm]	5.04" [128mm]	—	—	—	12.60" [320mm]	5.04" [128mm]	8.82" [224mm]	13.86" [352mm]	—
4430B 20	20" [500mm]	19.69" [500mm]	19.69" [500mm]	5.04" [128mm]	12.60" [320mm]	—	—	16.38" [416mm]	5.04" [128mm]	8.82" [224mm]	16.38" [416mm]	—
4430B 22	22" [550mm]	21.65" [550mm]	21.65" [550mm]	5.04" [128mm]	12.60" [320mm]	—	—	16.38" [416mm]	5.04" [128mm]	8.82" [224mm]	13.86" [352mm]	17.64" [448mm]
4430B 24	24" [600mm]	23.62" [600mm]	23.62" [600mm]	5.04" [128mm]	8.82" [224mm]	16.38" [416mm]	—	20.16" [512mm]	5.04" [128mm]	8.82" [224mm]	13.86" [352mm]	18.90" [480mm]

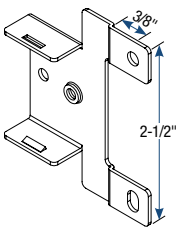
Xpander™ Adjustment



Min. Drawer Front Gap



4101B Rear Mounting Bracket



4104B Front Face Frame Bracket



The 4430 Drawer slide is designed for applications in the 65 pound class with maximum drawer width of 24". Slides are tested to meet or ANSI performance standards as established by BIFMA, KCMA and BHMA.

Knappe & Vogt reserves the right to change product specifications at any time without notice and without incurring responsibility for existing units.

©2015