

Heavy-Duty

200 lb. Class

.89" Side Clearance with QD Rail

Max. Drawer Width: 42"



8805 Heavy-Duty Over Travel Drawer Slide

The 8805 Heavy-Duty Over Travel Drawer Slide is designed to accommodate wider and heavier drawers for today's challenging applications in the commercial, residential and educational markets.

Applications

- Wood residential, commercial and office furniture
- Architectural, laboratory and school casework
- Store fixtures, medical carts
- Residential kitchen cabinetry

Specifications

Model: 8805 Heavy-Duty Over Travel Drawer Slide

Mounting: Side

Disconnect: Quick Disconnect Rail

Hole Pattern: Traditional

Face Frame Mounting: No

Type: Ball-Bearing

Travel: Over Travel

Finish: Zinc Plated

Length: 12", 14", 16", 18", 20", 22", 24", 26", 28"

Clearance: .89" +.03" - 0" (with QD Rail) on each side

Height: 2.78" [71mm] (with QD Rail)

Packaging: Bulk Pack (8805B): all sizes - 4 pair per carton

Action: Telescopic

Slide Configuration: Handed

Quick Disconnect Rail: Unhanded

Rating

Load: 200 lb.

Max. Drawer Width: 42"

As with all Knap & Vogt drawer slides, the 8805 is designed to meet or exceed ANSI performance standards as established by BIFMA, BHMA and KCMA.

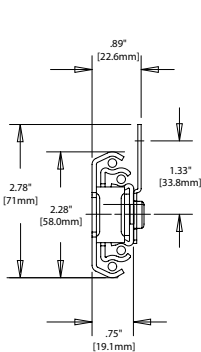
Hardware

#8 Phillips Pan Head

Warranty

Limited Lifetime Warranty

Profile



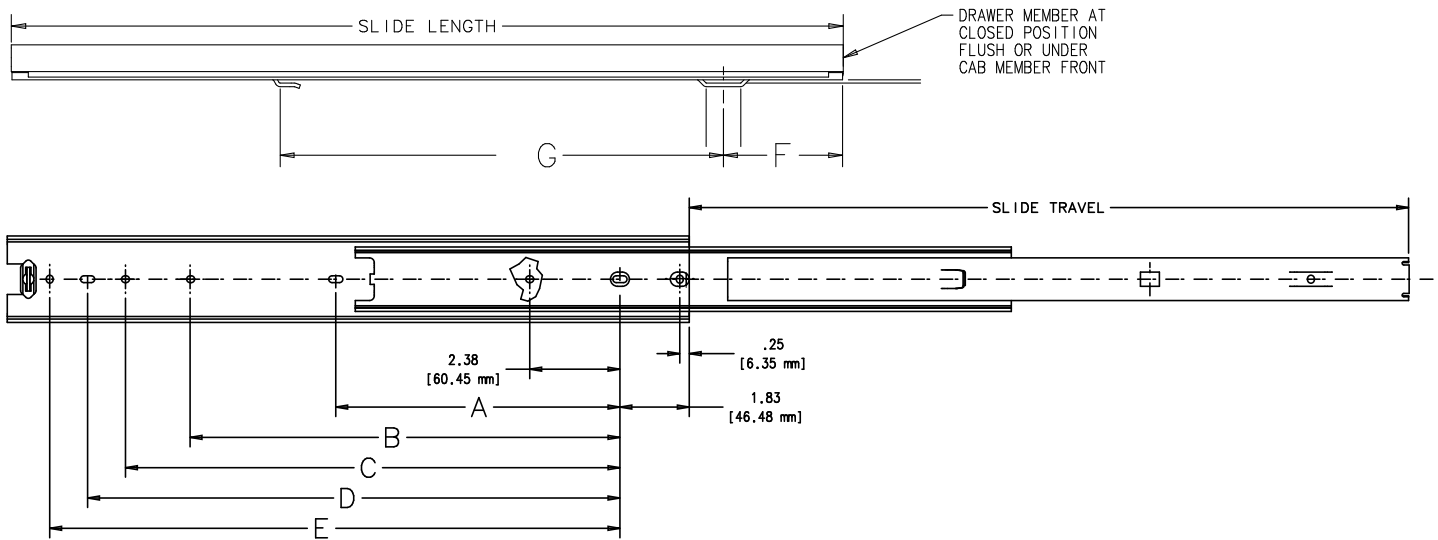
Clearance

57/64" + 1/32" - 0"

.89" +.03" - 0"

22.6mm + .8mm - 0mm

Charted Information



SKU Number	Slide Size inch/mm	Length inch/mm	Travel inch/mm	A inch/mm	B inch/mm	C inch/mm	D inch/mm	E inch/mm	F inch/mm	G Inch/mm
8805B 12	12" [300mm]	12" [300mm]	13.00" [330mm]	-	5.33" [135.4mm]	7.05" [179.1mm]	8.05" [204.5mm]	9.05" [229.9mm]	2.11" [53.5mm]	7.81" [198.4mm]
8805B 14	14" [350mm]	14" [350mm]	15.00" [381mm]	-	7.33" [186.2mm]	9.05" [229.9mm]	10.05" [255.3mm]	11.05" [280.7mm]	2.11" [53.5mm]	7.81" [198.4mm]
8805B 16	16" [400mm]	16" [400mm]	17.00" [432mm]	-	9.33" [237.0mm]	11.05" [280.7mm]	12.05" [306.1mm]	13.05" [331.5mm]	2.11" [53.5mm]	7.81" [198.4mm]
8805B 18	18" [450mm]	18" [450mm]	19.00" [483mm]	7.50" [190.5mm]	11.33" [287.8mm]	13.05" [331.5mm]	14.05" [356.9mm]	15.05" [382.3mm]	2.61" [66.2mm]	9.81" [249.2mm]
8805B 20	20" [500mm]	20" [500mm]	21.00" [533mm]	8.50" [215.9mm]	13.33" [338.6mm]	15.05" [382.3mm]	16.05" [407.7mm]	17.05" [433.1mm]	2.61" [66.2mm]	9.81" [249.2mm]
8805B 22	22" [550mm]	22" [550mm]	23.00" [584mm]	9.50" [241.3mm]	15.33" [389.4mm]	17.05" [433.1mm]	18.05" [458.5mm]	19.05" [483.9mm]	3.11" [78.9mm]	11.81" [300.0mm]
8805B 24	24" [600mm]	24" [600mm]	25.00" [635mm]	10.50" [266.7mm]	17.33" [440.2mm]	19.05" [483.9mm]	20.05" [509.3mm]	21.05" [534.1mm]	3.11" [78.9mm]	11.81" [300.0mm]
8805B 26	26" [650mm]	26" [650mm]	27.00" [686mm]	11.50" [292.1mm]	19.33" [491.0mm]	21.05" [534.1mm]	22.05" [560.1mm]	23.05" [585.5mm]	3.61" [91.6mm]	14.81" [376.2mm]
8805B 28	28" [700mm]	28" [700mm]	29.00" [737mm]	12.50" [317.5mm]	21.33" [541.8mm]	23.05" [585.5mm]	24.05" [610.9mm]	25.05" [636.3mm]	3.61" [91.6mm]	14.81" [376.2mm]



KNAPE & VOGT