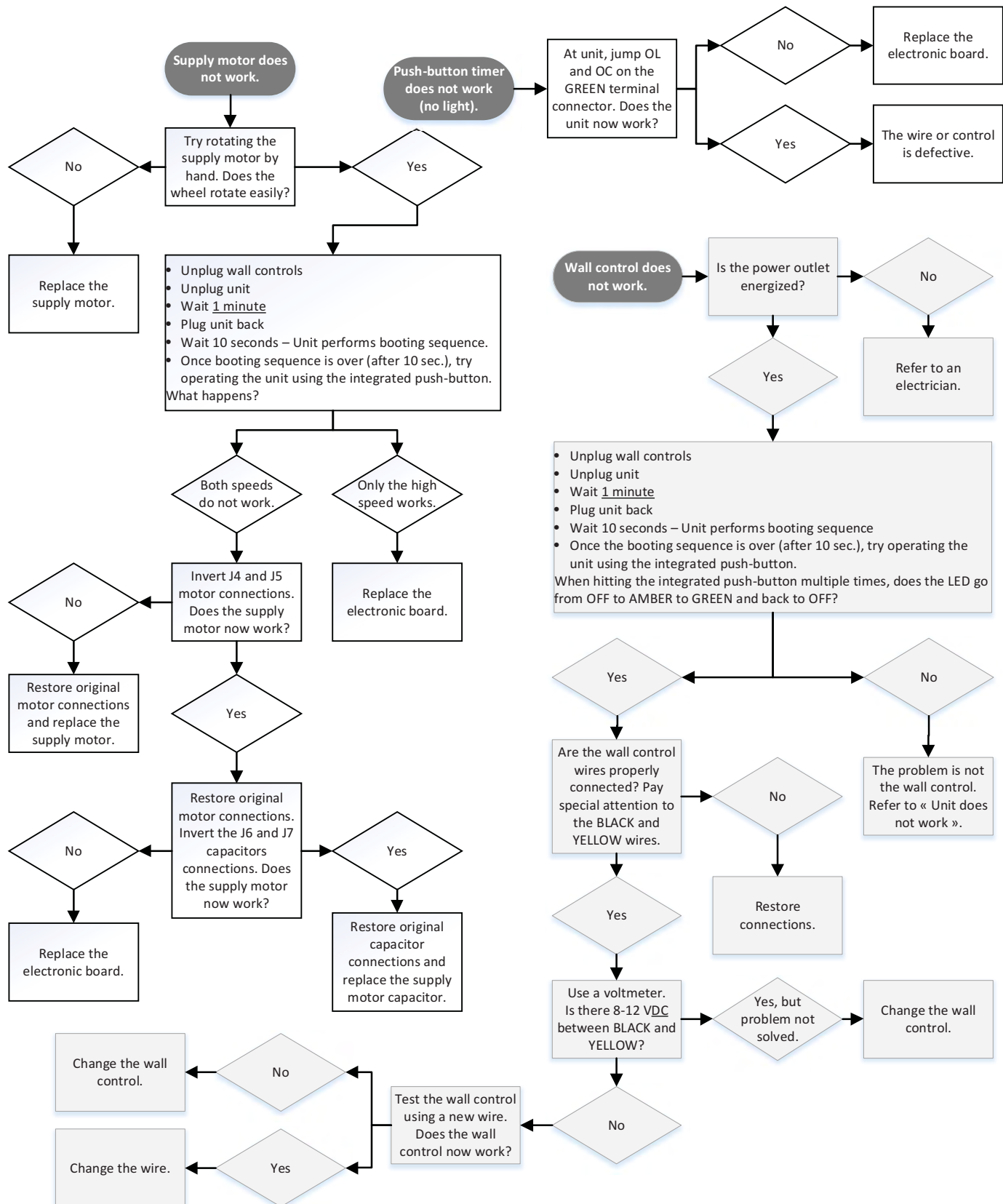
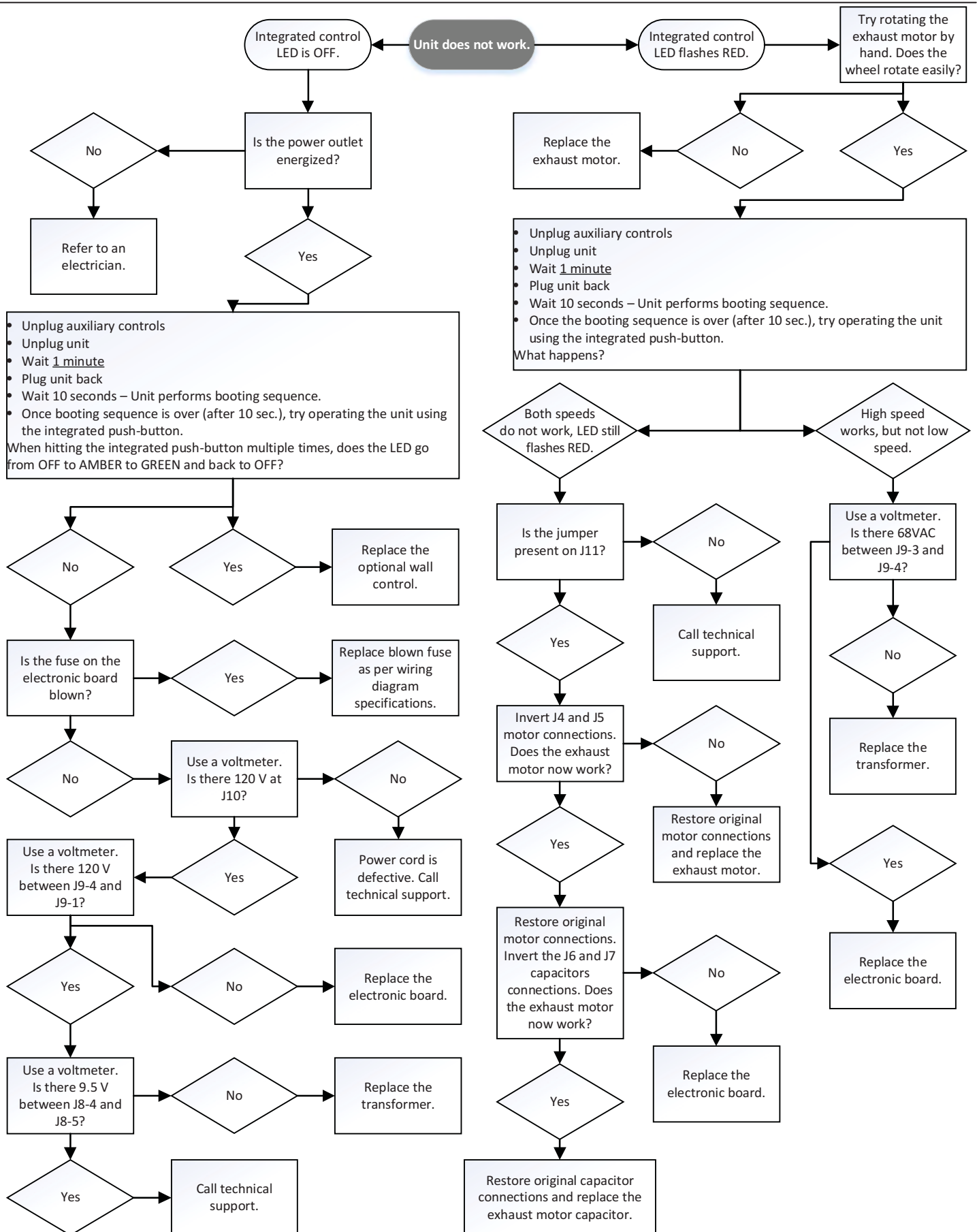


**⚠ WARNING**  
A few diagnosis procedures may require the unit to be in operation while proceeding. Be careful with moving and/or live parts.

LED Signal	Error Type	Action
LED flashes GREEN (double blink).	Thermistor error (unit still works).	Replace the thermistor kit.



## 7. INSTALLER'S TROUBLESHOOTING (CONT'D)



## 8. USING THIS UNIT

### 8.1 YOUR VENTILATION SYSTEM

This unit is designed to provide fresh air to your home while exhausting stale, humid air. By eliminating accumulated pollutants and humidity, it maintains an optimum air quality and an ideal relative humidity. It is equipped with a recovery core that is designed specifically to control excess humidity and reduce ventilation costs by recovering the energy from the exhausted air, and using that same energy to warm the fresh air being supplied. This recovery process is accomplished in such a way that the stale air is never mixed with the fresh air. When the outdoor temperature is below 23°F (-5°C), recovery creates frost in the module. To maintain proper operation, the unit is programmed to defrost the recovery module. The defrost duration and frequency vary according to the outdoor temperature. After defrosting, the unit returns to the operating mode selected by the user.

### 8.2 INTEGRATED CONTROL

All units are equipped with an integrated control, located in front of the electrical compartment. Use the push button (2) to control the unit. The LED (1) will show which mode the unit is in. For more convenience, these units can be controlled using an optional wall control.

#### NOTES:

1. The integrated control **must be turned OFF** to use an optional main control.
2. If an optional auxiliary control is used, when activated, it overrides the optional main control.

Refer to this table to operate the unit using the integrated control.

PRESS ON PUSH BUTTON	LED COLOR	RESULTS
ONCE	AMBER	UNIT IS ON LOW SPEED
TWICE	GREEN	UNIT IS ON HIGH SPEED
THREE TIMES	NO LIGHT	UNIT IS OFF

If a problem occurs during the operation of the unit, the integrated control LED (1) will blink. The color of the LED light indicates the type of error detected. Contact your installer.

For wall control problems, refer to the Troubleshooting section in the *Main and auxiliary wall controls user guide*, available at [www.broan.com](http://www.broan.com)

If the problem is still not solved, contact your installer.

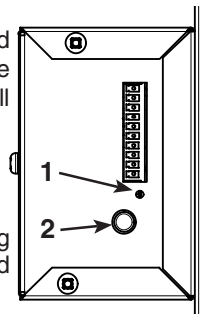
#### 8.2.1 BOOT SEQUENCE

The boot sequence of this unit is similar to the boot sequence of a personal computer. Each time the unit is plugged after being unplugged, or after a power failure, it will perform a booting sequence before starting to operate. During the booting sequence, the integrated control LED (1) will light up and remain GREEN or AMBER for 3 seconds, and will then shut off; the booting sequence is done.

NOTE: No command will be taken until the unit is fully booted.

#### 8.2.2 SETTING EXTENDED DEFROST

The unit is factory set to normal defrost. In cold regions, it may be necessary to setup extended defrost. To do so, during the first 5 seconds of the booting sequence, while the integrated control LED is GREEN, press the push button (2) and hold it until the LED turns AMBER (about 3 seconds).



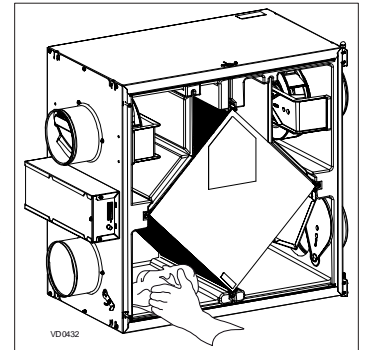
## 9. MAINTENANCE

### ⚠ WARNING

**Dangerous voltage. During maintenance and repairs, the unit must always be turned off, then unplugged. We take great care to minimize sharp edges; however, please proceed with caution when handling all components. When cleaning the unit, it is recommended to wear safety glasses and gloves.**

#### 9.1 QUARTERLY

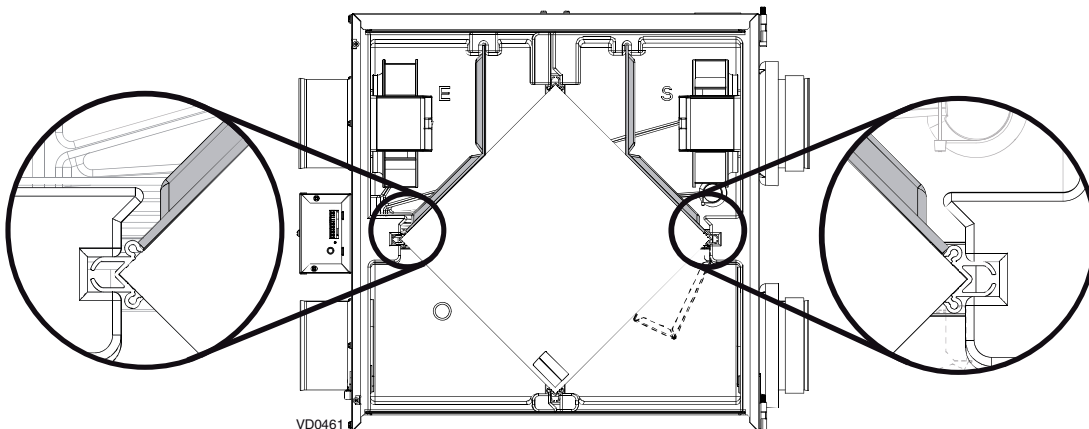
1. Disconnect power cord.
2. The door of this unit is hinged and maintained closed by 2 screws. Remove them and set aside.
3. Clean the inside of the door with a damp cloth.
4. Clean filters:
  - Remove filters.
  - Vacuum to remove most of the dust.
  - Wash with a mixture of warm water and mild soap. You may add bleach if you wish to disinfect (one tablespoon per gallon). Rinse thoroughly. Shake filters to remove excess water and let dry.
5. Clean the condensing tray and plate (if applicable) with a damp cloth.
6. Check the exterior air intake hood:
  - Make sure there are no leaves, twigs, ice or snow that could be drawn into the vent.
  - Clean if necessary.



### CAUTION

**A blocked air vent, even partially, can cause the unit to malfunction.**

7. Reassemble the components. Pay special attention to the filters by making sure that they are engaged in their slots. If a motor wheel touches a filter, the filter is not correctly placed.
8. Rotate the blower wheels by hand. If one of the wheels does not rotate easily, contact your installer.
9. Close the unit door and reconnect power supply.



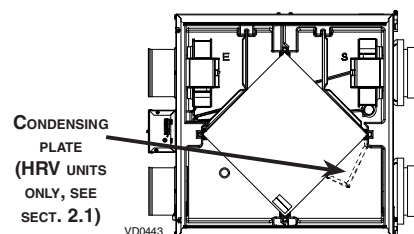
## 9. MAINTENANCE (CONT'D)

### 9.2 ANNUAL (AT FALL)

1. Repeat steps 1 to 6 from the previous section and continue with the following steps:

#### CAUTION

- Handle the recovery core with care.
- Do not disassemble the condensing plate from the heat recovery core.



2. Clean the recovery core:

HRV130FL	ERV130FL
<ul style="list-style-type: none"><li>• Remove the core.</li><li>• Let it soak in a mixture of cold or lukewarm water and mild soap (dishwashing liquid).</li><li>• Rinse thoroughly.</li><li>• Shake the core to remove excess water and let it dry.</li></ul>	<p>Remove the dust on the core using a vacuum cleaner and a soft brush attachment.</p> <p><b>CAUTION: DO NOT SOAK THE ENERGY RECOVERY CORE IN WATER</b></p>

3. Clean the blower assembly.
4. Remove the dust using a vacuum cleaner with a soft brush attachment.
5. Reassemble the components.
6. Reconnect power supply.

## 10. USER'S TROUBLESHOOTING

Contact customer service at 1-877-862-7626 for any unresolved issue.

PROBLEM	TRY THIS
1. Nothing works.	<ul style="list-style-type: none"><li>• See if the unit is plugged in.</li><li>• See if the unit is receiving power from the house circuit breaker or fuse.</li></ul>
2. Noisy unit.	<ul style="list-style-type: none"><li>• Clean the unit (see Section 9). If the problem is not solved, contact your installer.</li></ul>
3. Condensation on windows (air too humid).	<ul style="list-style-type: none"><li>• Operate the unit at maximum speed (MAX.) during activities generating excess humidity (family gatherings, extra cooking, etc.).</li><li>• Leave curtains half-open to allow air circulation.</li><li>• Store all firewood in a closed room with a dehumidifier or in a well ventilated room, or store the wood outdoors.</li><li>• Keep the temperature in your house above 64°F (18°C).</li></ul>
4. Air too dry.	<ul style="list-style-type: none"><li>• Operate the unit at low speed (MIN.).</li><li>• Temporarily switch to the intermittent mode (if available).</li><li>• Temporarily use a humidifier.</li></ul>
5. Air too cold at the air supply grille.	<ul style="list-style-type: none"><li>• Make sure the outdoor hoods are not blocked.</li><li>• Operate the unit at low speed (MIN.).</li><li>• Have the system's balancing checked (contact your installer).</li><li>• Have the unit's defrost system checked (contact your installer).</li><li>• Install a duct heater (contact your installer).</li></ul>

## 11. WARRANTY

---

This ventilation unit is a high quality product, built and packaged with care. The manufacturer warrants to the original purchaser of its product, that such products will be free from defects for the period stated below, from date of original purchase. For all units, the warranty covers parts only against any operational defect. This 5-year warranty is subject to performance of the core maintenance according to recommendations in this manual. The heat recovery core (HRV) has a limited lifetime warranty, and the energy recovery core (ERV) has a 5-year warranty. If any defect should occur, we urge you to read the user guide carefully. If the problem persists, observe the following rules:

### RULES TO FOLLOW

If the unit is defective, contact your ventilation contractor (see address on your manual's cover page). The contractor will determine with you the reason for the defect, and if needed, do the replacement or repair. If ever it is impossible to reach your ventilation contractor, call 1-877-862-7626 (in North America); the personnel will be pleased to give you the phone number of a distributor or a service center near you.

### REPLACEMENT PARTS AND REPAIR

In order to ensure your ventilation unit remains in good working condition, you must use the Broan genuine replacement parts only. The Broan genuine replacement parts are specially designed for each unit and are manufactured to comply with all the applicable certification standards and maintain a high standard of safety. Any third party replacement part used may cause serious damage and drastically reduce the performance level of your unit, which will result in premature failing. Broan also recommends that you contact a service depot certified by the manufacturer for all replacement parts and repair.

### BILL OF PURCHASE

No replacement or repair covered by the warranty will be carried out unless the unit is accompanied by a copy of the original bill of purchase. Please retain your original.

### MISCELLANEOUS COSTS

In each case, the labor costs for the removal of a defective part and/or installation of a compliant part will not be covered by the manufacturer.

### CONDITIONS AND LIMITATIONS

These units are created for **residential use** only and must be used in a building as defined below:

- Building:** All structures zoned and/or erected for the act, process or art of human or animal habitation and/or the storage or warehousing of goods.
- Residential use:** Dwelling, lodging, suite: Building, or part of a building, intended to act as either the domicile to one or several people which can include general sanitary, food consumption and rest facilities. Buildings of only one room or a group of rooms including those occupied by a tenant or owner; comprise the lodgings, the individual rooms of the motels, hotels, rooming/lodging houses, boarding/half-way/foster homes, dormitories, and suites, as well as the stores and the business establishments constituted by only one room in a dwelling.
- Commercial use:** Agricultural establishment, commercial establishment for assembly, care, or detention: Building or part of a building that does not contain a dwelling, situated on land dedicated to agriculture or farming and used primarily to shelter animals, or for the production, the storage or the treatment of agricultural or horticultural products or animal food. Building or part of a building, used for the display or retail of goods, professional or personal services, or commodities. Building, or part of a building used by persons gathering for civic activities, religious or political assembly, tourism, educational/vocational training, recreation or the consumption of food or drink. Building, or part of a building used to shelter persons of impaired physical or psychological states, persons requiring palliative care or medical treatments, or persons for reasons out of their control, cannot escape harm or threat of danger autonomously.
- Industrial use:** Building, or part of a building, used for the assembly, the manufacture, the creation, the treatment, the repair or the storage of products and combustible materials and that contain fuels that when ignited or exploded in sufficient quantity may constitute a risk of fire.

The above warranty applies to all cases where the damage is not a result of poor installation, improper use, mistreatment or negligence, acts of God, or any other circumstances beyond the control of the manufacturer. Furthermore, the manufacturer will not be held responsible for any bodily injury or damage to personal property or real estate, whether caused directly or indirectly by the unit. This warranty supersedes all prior warranties.