

Components for Adjustable Table System - Conversion



Single Adjustable Column

- For small top applications such as speaking pedestals
 - Use in conjunction with mounting brackets on the next page
 - With a simple Up/Down switch
- Height: 658 – 1138 mm (25 7/8" – 44 7/8"), does not include thickness of top
 Stroke 480 mm (18 7/8")
 Travel speed: 38 mm (1 1/2") per second
 Weight capacity: 113 kg (250 lbs.) including work surface

Material: Steel, epoxy-coated

Color	Item No.
silver RAL 9006	637.45.240
black RAL 9011	637.45.340

Supplied With

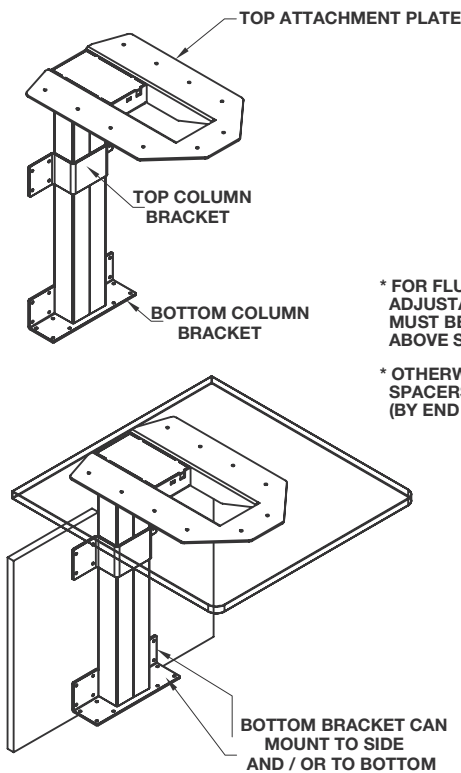
Adjustable column
 Control box - 1 port with wiring
 Up/Down switch

Note

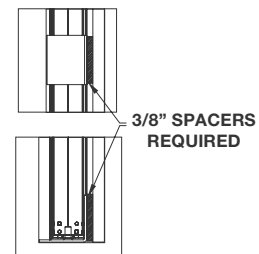
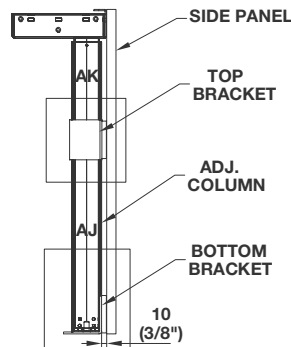
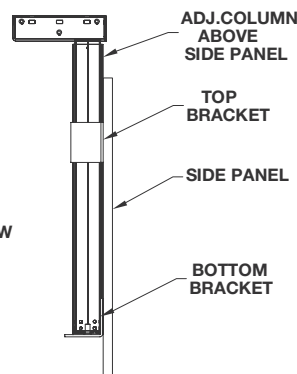
Single columns cannot be paired together or synchronized with other columns.



Dimensional data not binding. We reserve the right to alter specifications without notice.

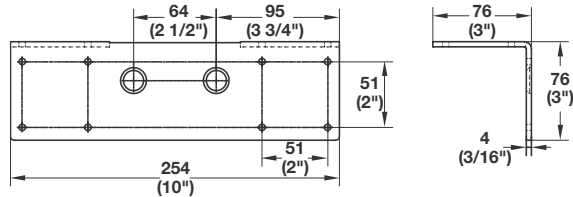
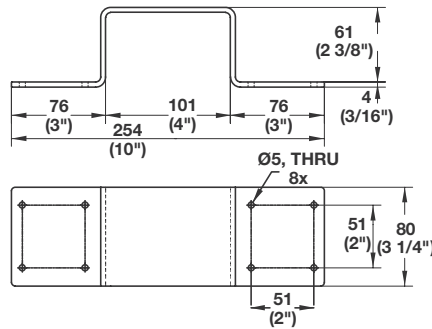
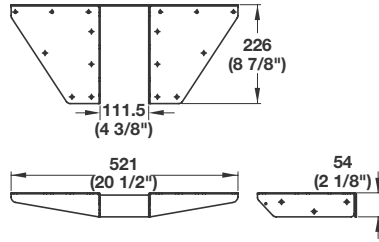
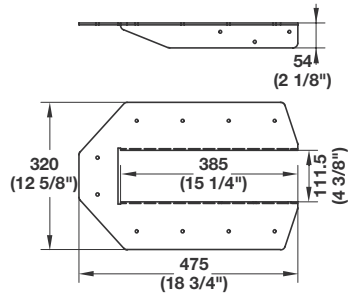


* FOR FLUSH MOUNTING ADJUSTABLE COLUMN MUST BE MOUNTED ABOVE SIDE PANEL
 * OTHERWISE 3/8" THICK SPACERS ARE REQUIRED (BY END USER), SEE BELOW



Dimensions in mm
 Inches are approximate

Conversion Accessories



6

Adjustable Column Mounting Brackets

Top Attachment Plate

Material: Steel, epoxy-coated

Color	Item No.
black RAL 9011	630.05.320

Supplied With

6 pcs. M6 x 12 mm bolts for attachment to adjustable column

Top Attachment Plate

Material: Steel, epoxy-coated

Color	Item No.
black RAL 9011	630.05.323

Supplied With

6 pcs. M6 x 12 mm bolts for attachment to adjustable column

Top Column Bracket

Material: Steel, epoxy-coated

Color	Item No.
silver RAL 9006	630.05.221
black RAL 9011	630.05.321

Bottom Column Bracket

Material: Steel, epoxy-coated

Color	Item No.
silver RAL 9006	630.05.222
black RAL 9011	630.05.322

Supplied With

2 pcs. M10 x 25 mm bolts for attachment to adjustable