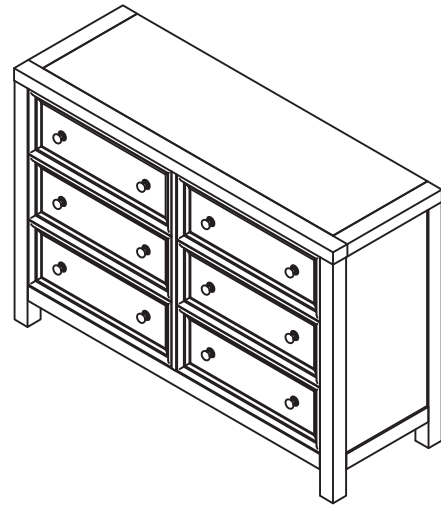


homestyles[®]

20 05420 0431

Dresser



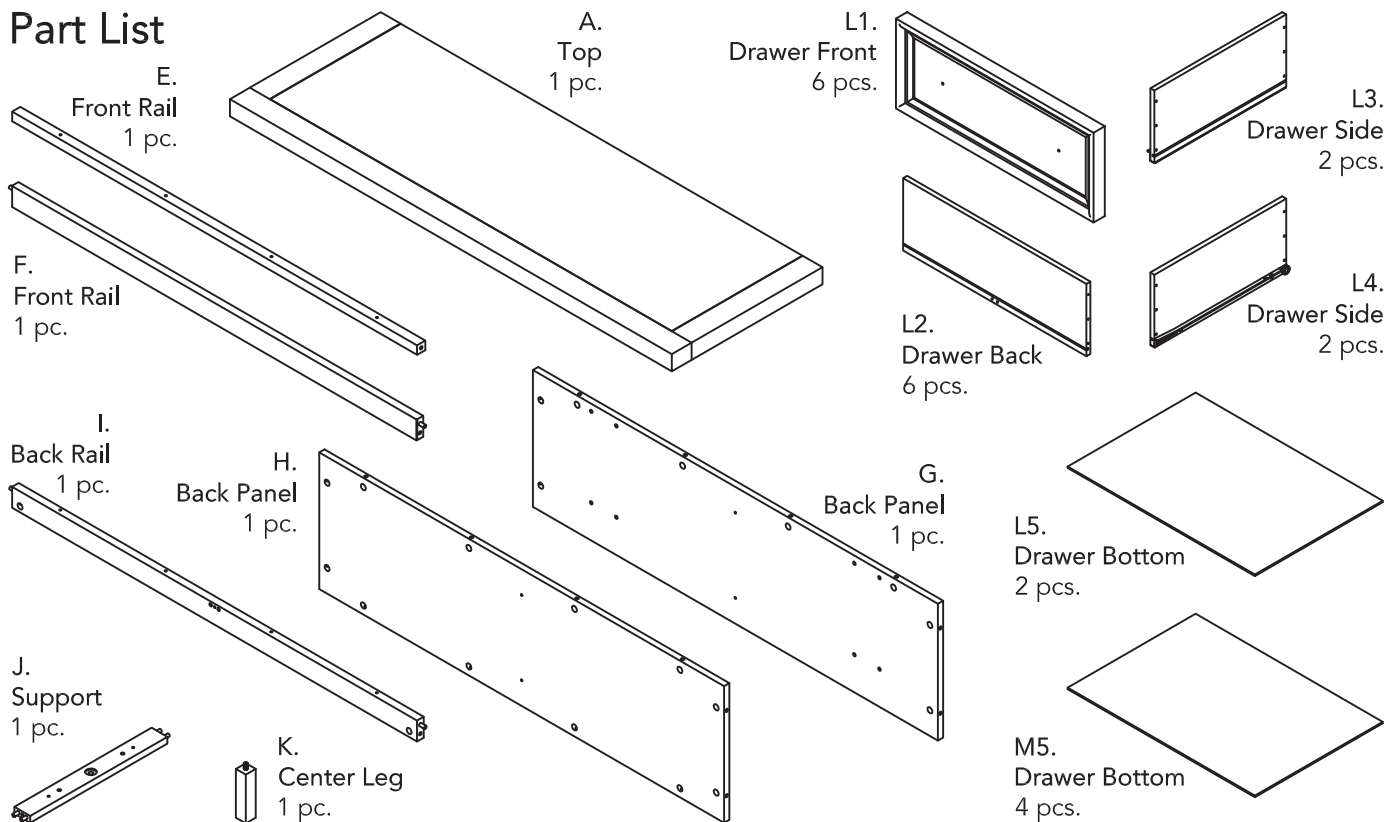
IMPORTANT

Carefully remove all the parts from the carton and place them individually on a soft cloth to prevent scratches or other damage.

Carefully and strictly follow these assembly instructions to ensure a completed product as designed.

Do not use power tools above 8 volts to assemble.

Part List



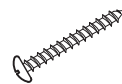
Hardware List



Cam Lock Screw
40 pcs. (+4 extra)



Cam Lock
40 pcs. (+4 extra)



1 1/4" Round Head
Screw (M4x32)
6 pcs. (+1 extra)



1 1/4" Flat Head
Screw (M3x32)
90 pcs. (+1 extra)



3/4" Flat Head
Screw (M3x19)
36 pcs. (+1 extra)



Handle
12 pcs.



Machine Screw
(M4"x1")
12 pcs.



Wooden Dowel
2 pcs. (+1 extra)

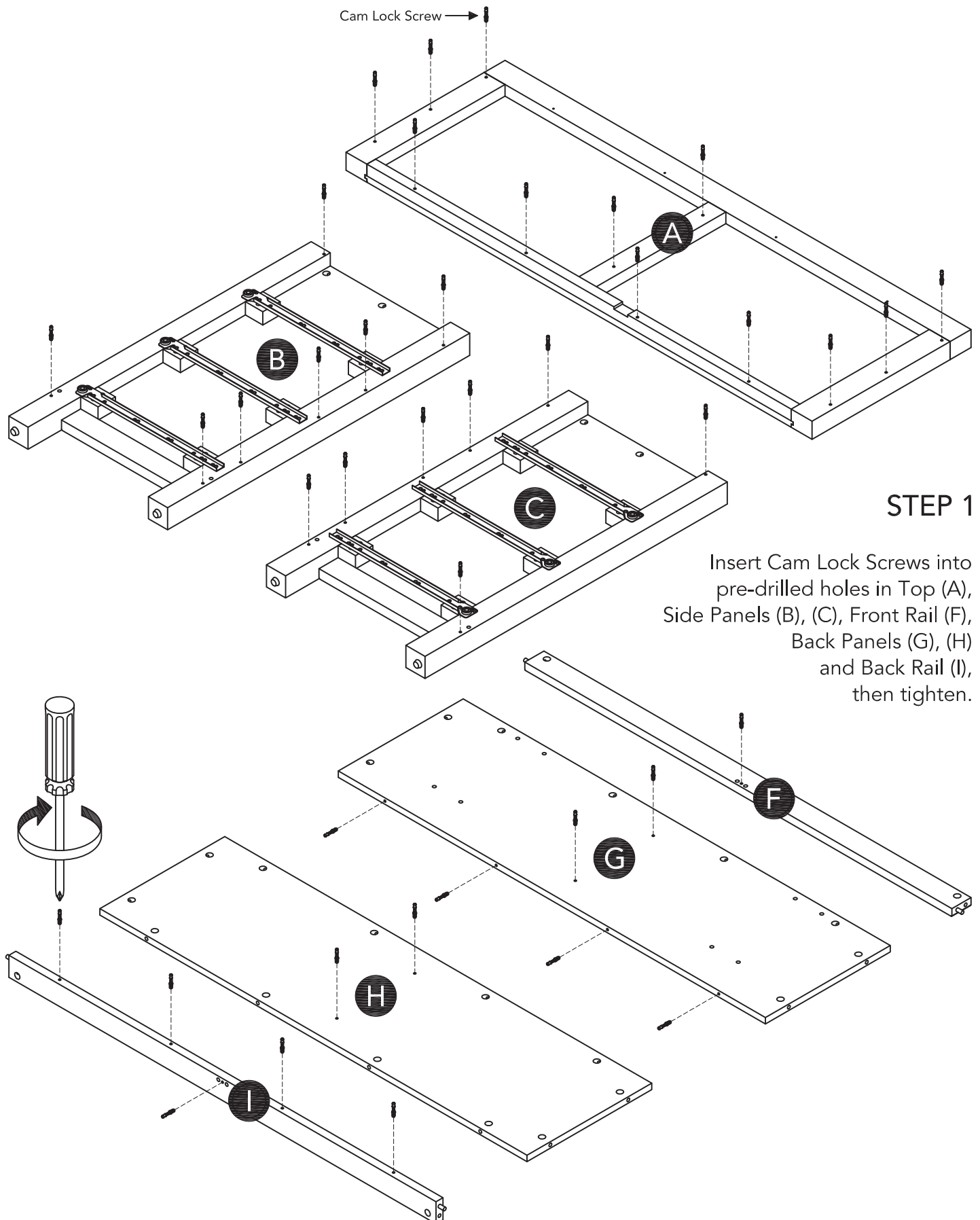
Carton 20 05420 0432 is also needed for assembly.

Home Styles Customer Service: www.homestyles-furniture.com,
servicedesk@homestyles-furniture.com, 888-680-7460, 877-831-0319

Assembly Instructions 2/10

IMPORTANT

- Use a soft cloth between these parts and the floor.
- Do not use power tools above 8 volts to assemble.
- Do not tighten all the screws until each part is properly assembled.
- The unit must be level to work properly. Use the included adjustable levelers to level.



STEP 2

Attach Back Panel (G) and Back Rail (I) to Back Panel (H) with Cam Locks. (See Figure 1)

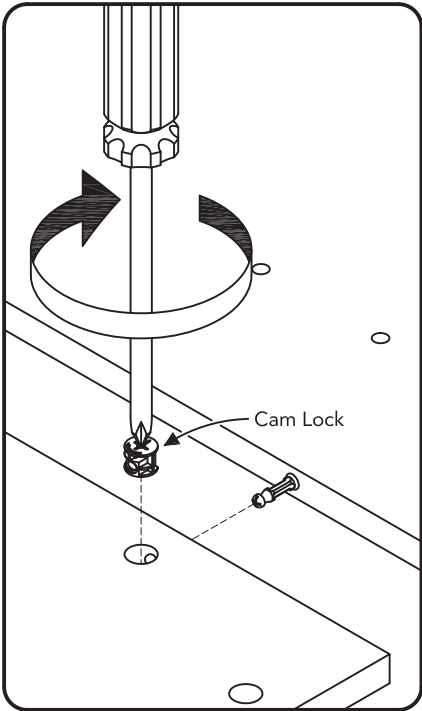
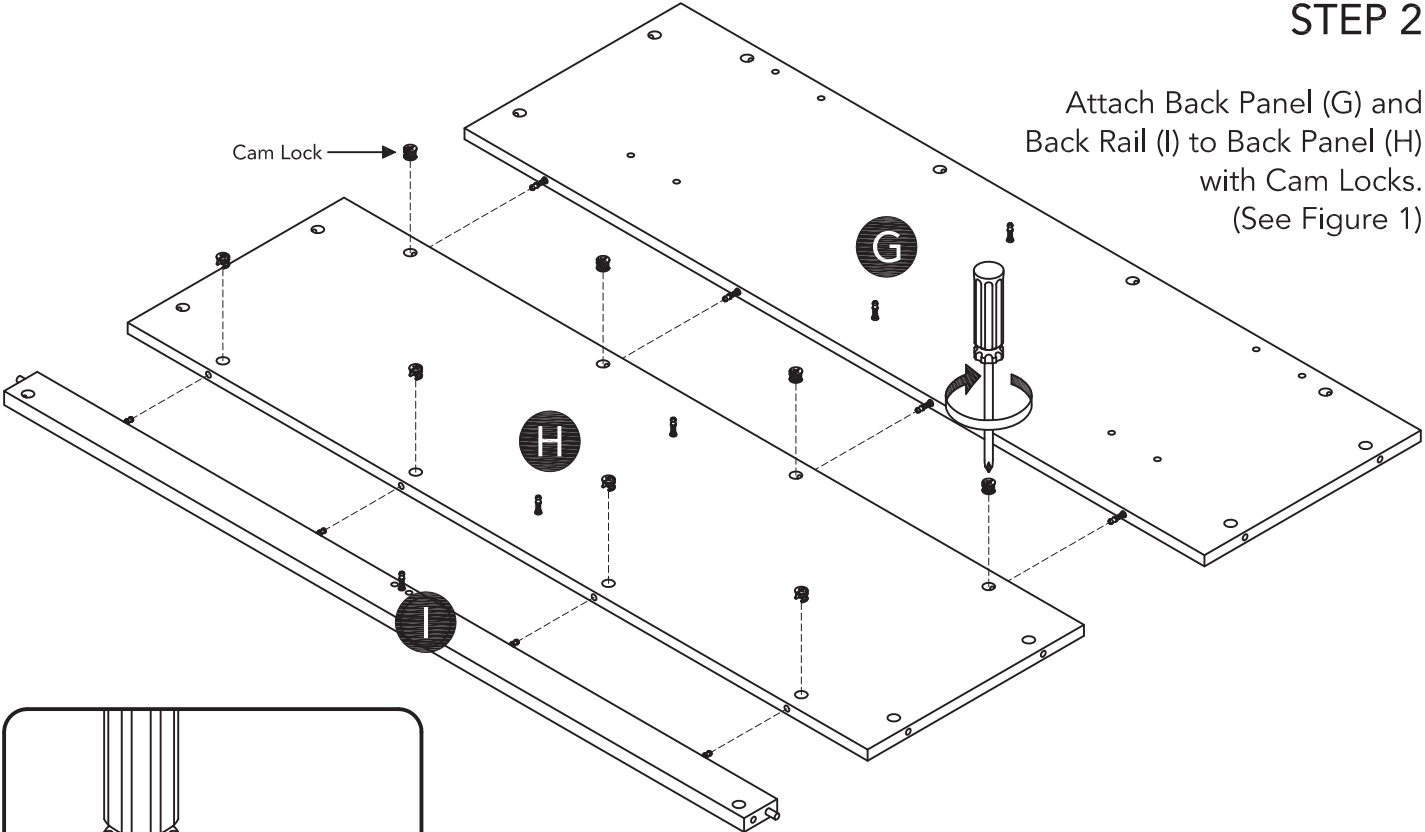
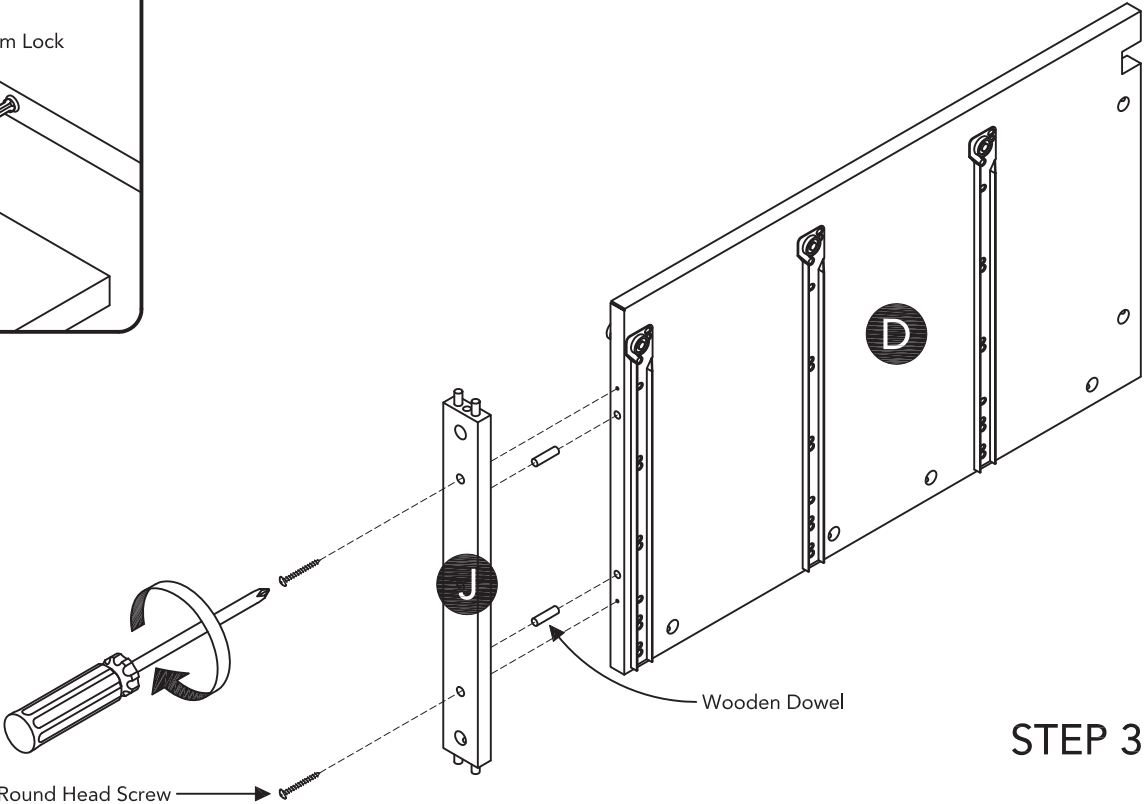


Figure 1



STEP 3

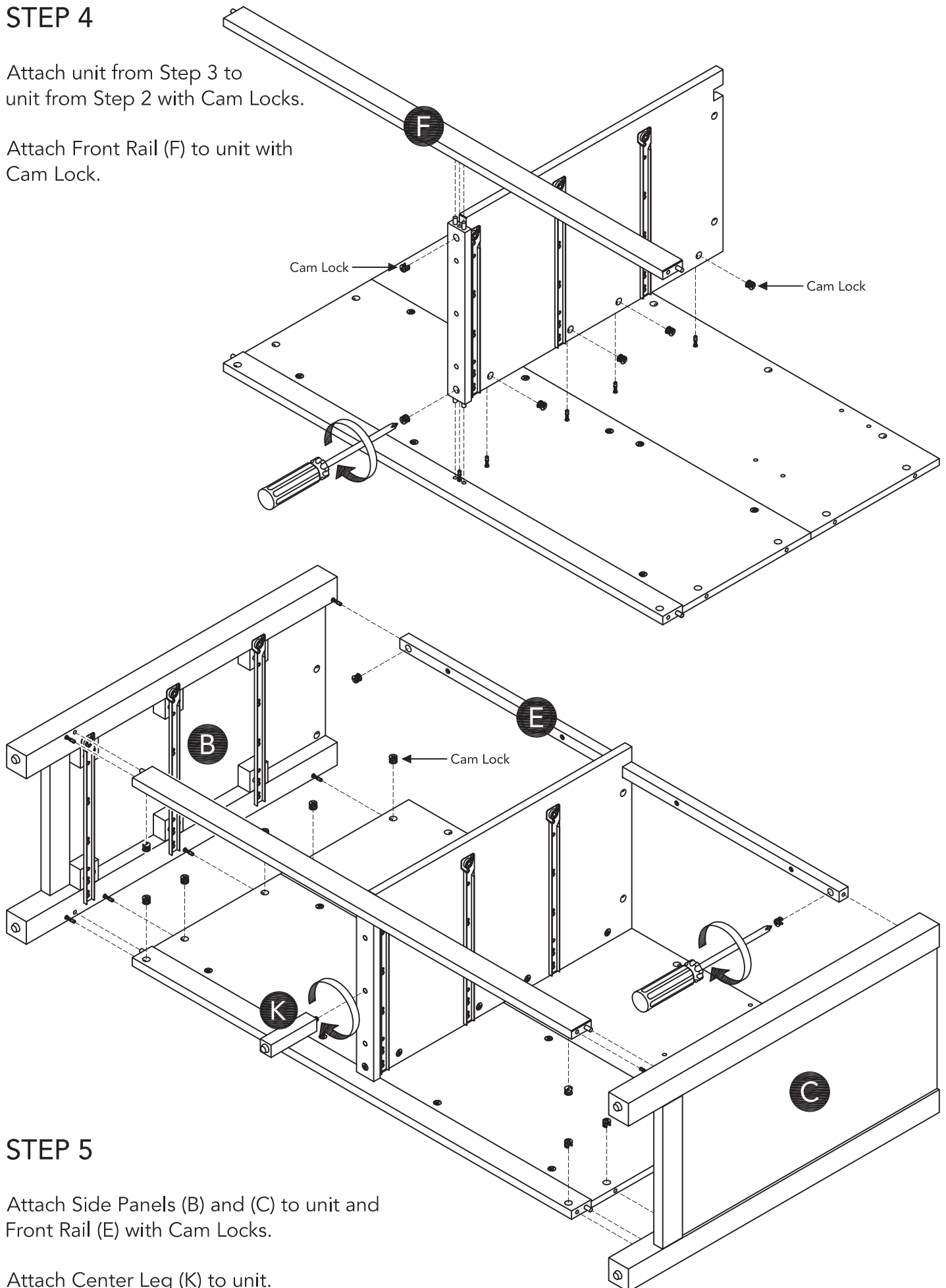
Attach Support (J) to Middle Panel (D) with 1 1/4" Round Head Screws and Wooden Dowels.

Assembly Instructions 4/10

STEP 4

Attach unit from Step 3 to unit from Step 2 with Cam Locks.

Attach Front Rail (F) to unit with Cam Lock.



STEP 5

Attach Side Panels (B) and (C) to unit and Front Rail (E) with Cam Locks.

Attach Center Leg (K) to unit.

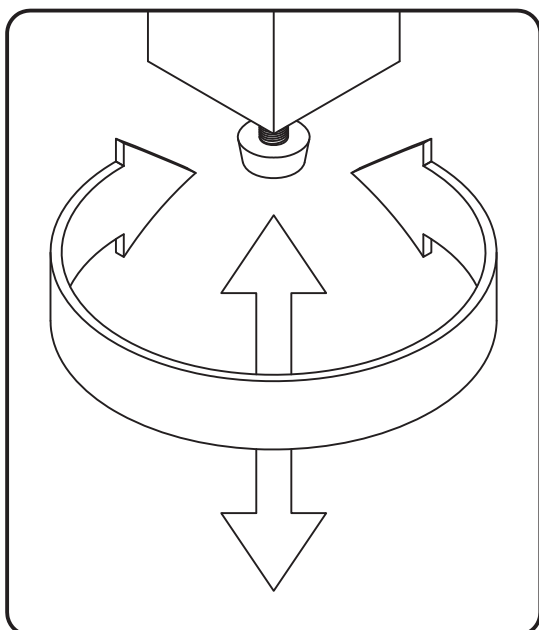
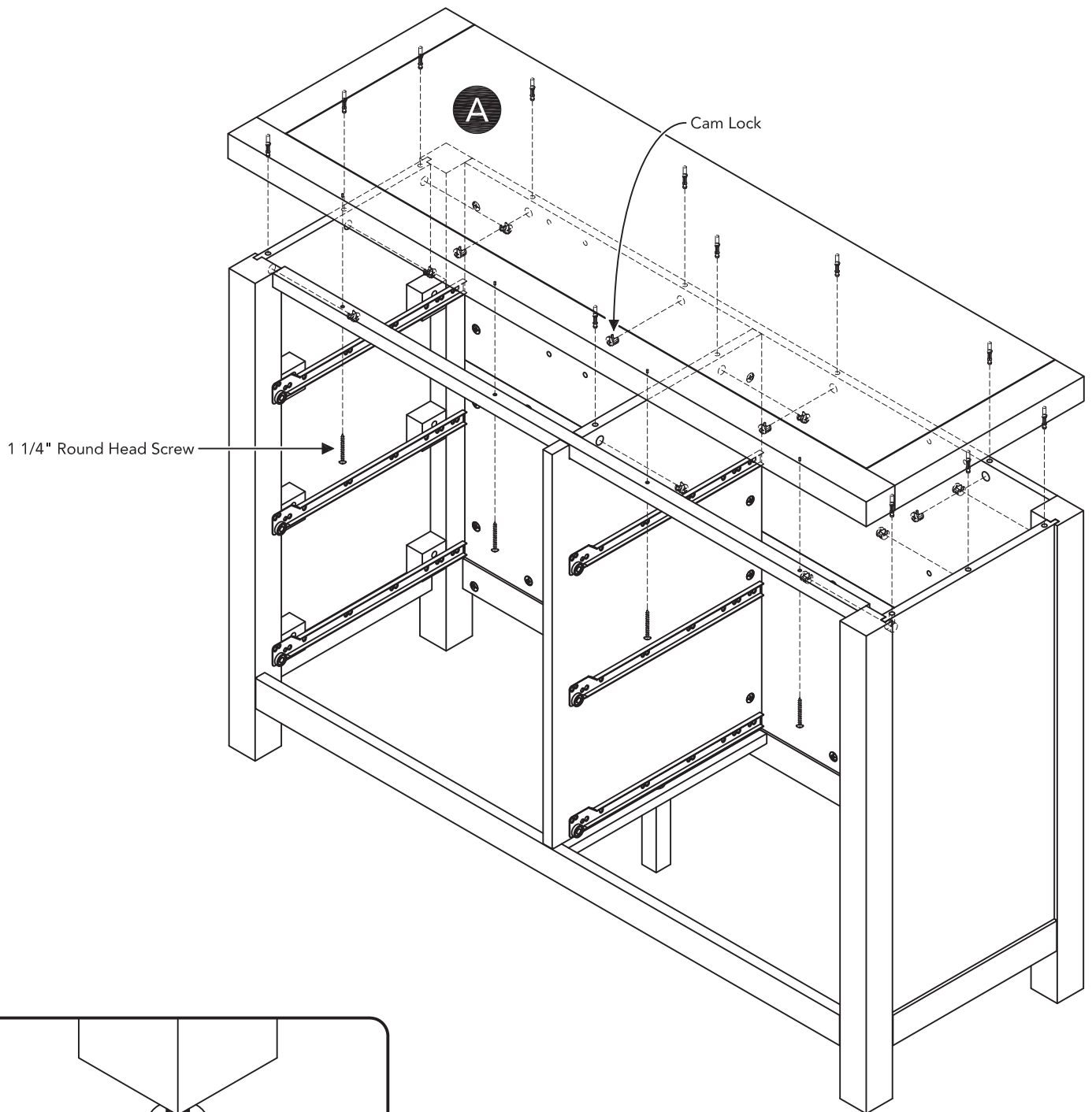


Figure 2

STEP 6

Attach Top (A) to unit with Cam Locks and 1 1/4" Round Head Screws.

Level unit by adjusting the adjustable levelers on bottom of unit. (See Figure 2)

Note: Unit must be level to work properly.