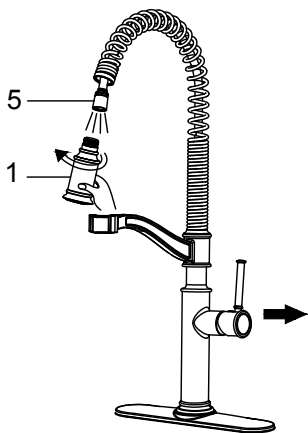


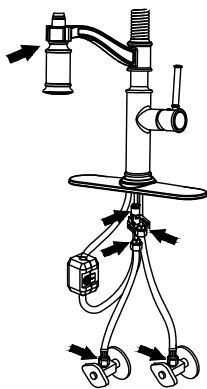
Step 6. Flush spray hose



Remove spray head (1) from spray hose (5). Hold tip of spray hose (5). Turn faucet on and let the water run for 60 seconds to flush any debris.

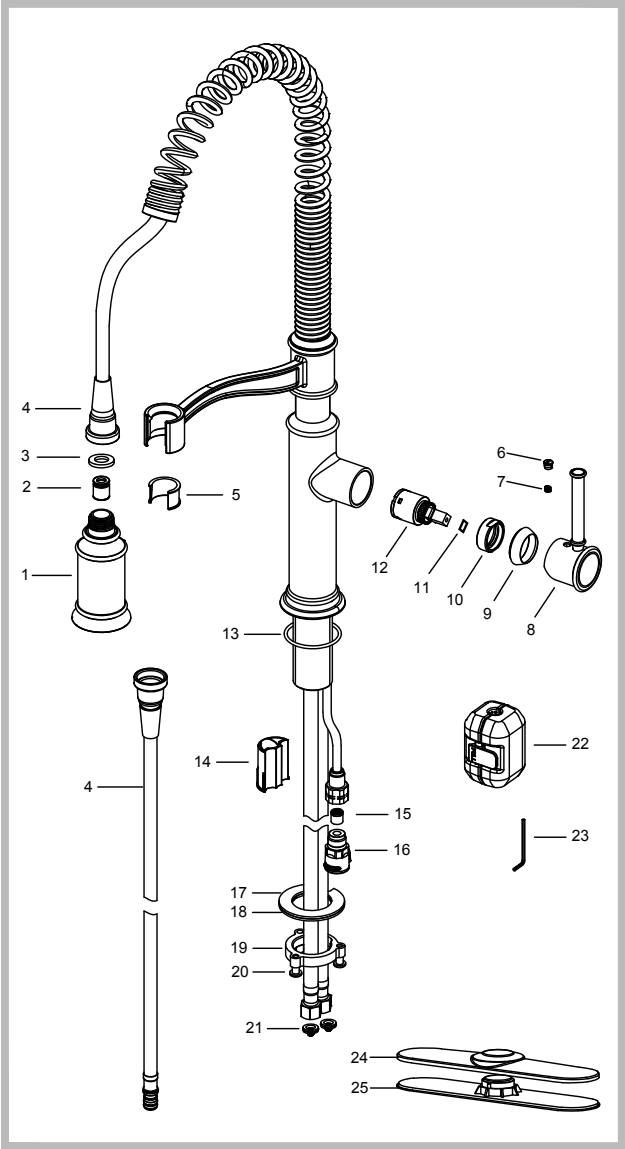
NOTE: Please make sure washer is installed attaching spray head to hose.

Step 7. Check for leaks



Check for leaks at the connections. Retighten if necessary.

Replacement Parts



| Replacement Parts List | Finish/Color | Part # |
|------------------------|--------------|---------|
| 1. Spray Head | CH,SFS,ORB* | KP06092 |
| 2. Check Valve | | KP06105 |
| 3. Washer | | KP06074 |
| 4. Spray Hose | CH,SFS,ORB* | KP06186 |
| 5. Inverter | | KP06187 |
| 6. Handle Button | CH,SFS,ORB* | KP06030 |
| 7. Set Screw | | KP06055 |
| 8. Metal Handle | CH,SFS,ORB* | KP06043 |
| 9. Cartridge Cover | CH,SFS,ORB* | KP06021 |
| 10. Locking Nut | | KP06018 |
| 11. Washer | | KP06069 |
| 12. Cartridge | | KP06100 |
| 13. Base O-Ring | | KP06062 |
| 14. Protective Sleeve | | KP06161 |
| 15. Check Valve | | KP06104 |
| 16. Quick Connector | | KP06108 |
| 17. Rubber Washer | | KP06041 |
| 18. Metal Washer | | KP06028 |
| 19. Mounting Nut | | KP06067 |
| 20. Mounting Screws | | KP06068 |
| 21. Filter Washers | | KP06185 |
| 22. EZ-Weight | | KP06015 |
| 23. 2.5mm Hex Wrench | | KP06050 |
| 24. Deck Plate | CH,SFS,ORB* | KP06010 |
| 25. Base Plate | GR, BL* | KP06013 |

*Denotes faucet component color options:
CH - Chrome
SFS - Spot Free Stainless Steel
ORB - Oil Rubbed Bronze
BL - Black
GR - Grey

Trouble-Shooting

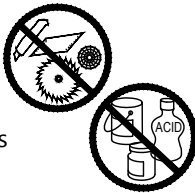
If you have followed the instructions carefully and your faucet still does not work properly, take the following corrective steps:

| PROBLEM | CAUSE | ACTION |
|---|---|---|
| Leakage under faucet handle | Locking nut has come loose or cartridge needs to be reseated. | Remove button located at top of handle. Loosen set screw with hex wrench. Remove handle and unscrew cartridge cover by hand. Tighten locking nut with an adjustable wrench. |
| Water does not shut off completely | Cartridge may need to be adjusted or replaced. | Remove button located at top of handle. Loosen set screw with hex wrench. Remove handle and unscrew cartridge cover by hand. Unscrew locking nut with an adjustable wrench. Remove ceramic disc cartridge. Check for cracks, and if O-ring is seated correctly. Reseat cartridge. |
| Leaking between spray head and the hose | Spray head may be loose or washer is not seated correctly in the hose connection. | Tighten spray head by hand until snug. Make sure washer is seated correctly. |
| Hose does not retract | Weight may be installed incorrectly. | Readjust weight on hose. |
| Low flow | Aerator may be clogged The screen filter in the hose connectors is dirty. | Unscrew aerator with aerator key. Hold tip of spray head and turn on water to flush debris. Turn off the water supply at water valve and unscrew the hose connectors from water supply lines. Clean the screen in the water lines with hot water, removing any debris or calcium build up. |

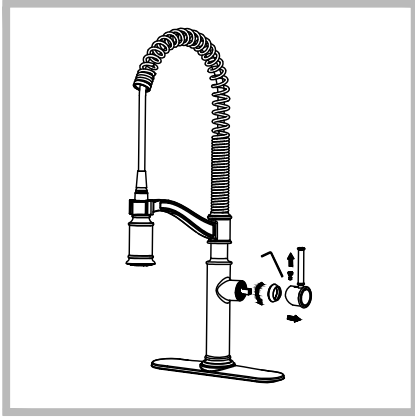
Care & Maintenance

To keep the product clean & shining, follow the steps below:

1. Rinse with clean water & dry with a soft cloth
2. Do not clean with soaps, acid, polish, abrasives or harsh cleaners
3. Do not use cloth with a coarse surface
4. Unscrew the aerator and clean when necessary



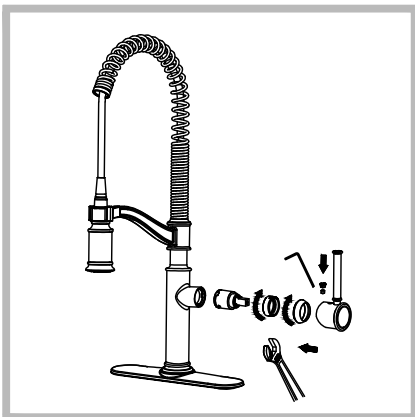
Maintenance - Cartridge Replacement



Step 1: Remove button located at the top of the handle. Loosen the set screw with a hex wrench. Remove the handle and unscrew cartridge cover by hand.



Step 2: Unscrew the locking nut with an adjustable wrench. Remove ceramic disc cartridge.



Step 3: Place the new cartridge in the handle seat. Secure the cartridge with the locking nut and assemble the handle.