



Urbix™ Industrial Bridge Kitchen Faucet

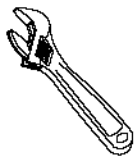
KPF-3125

Prior to Installation:

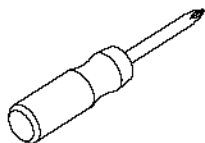
- Make sure you have all necessary parts by checking the diagram and parts list.
- Turn off the hot and cold water supply at the angle stops and turn on the old faucet to release any built up pressure. Remove existing faucet. Clean sink or countertop to remove any debris, plumber's putty, or silicone.
- Flush angle stops to release any debris prior to installation.
- Pre-drilled hole size requirement: 1 1/4" (min) - 1 1/2" (max)
- Max countertop thickness: 2 1/2"
-
- 3 or 4 hole installation

For technical assistance or replacement parts, please contact Kraus Customer Service and one of our representatives will be happy to help:

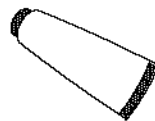
Tools Required



Adjustable Wrench



Phillips Screwdriver

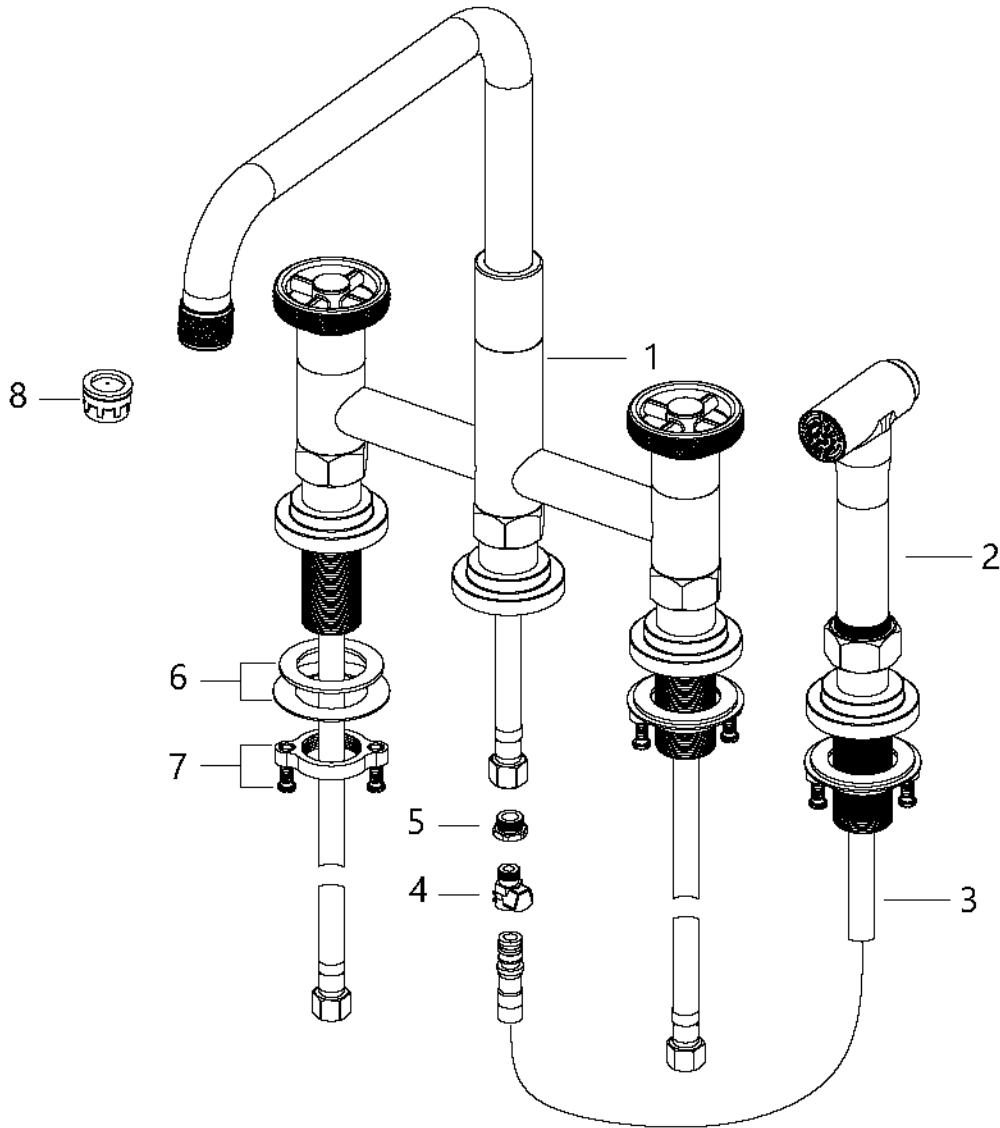


Silicone Sealant



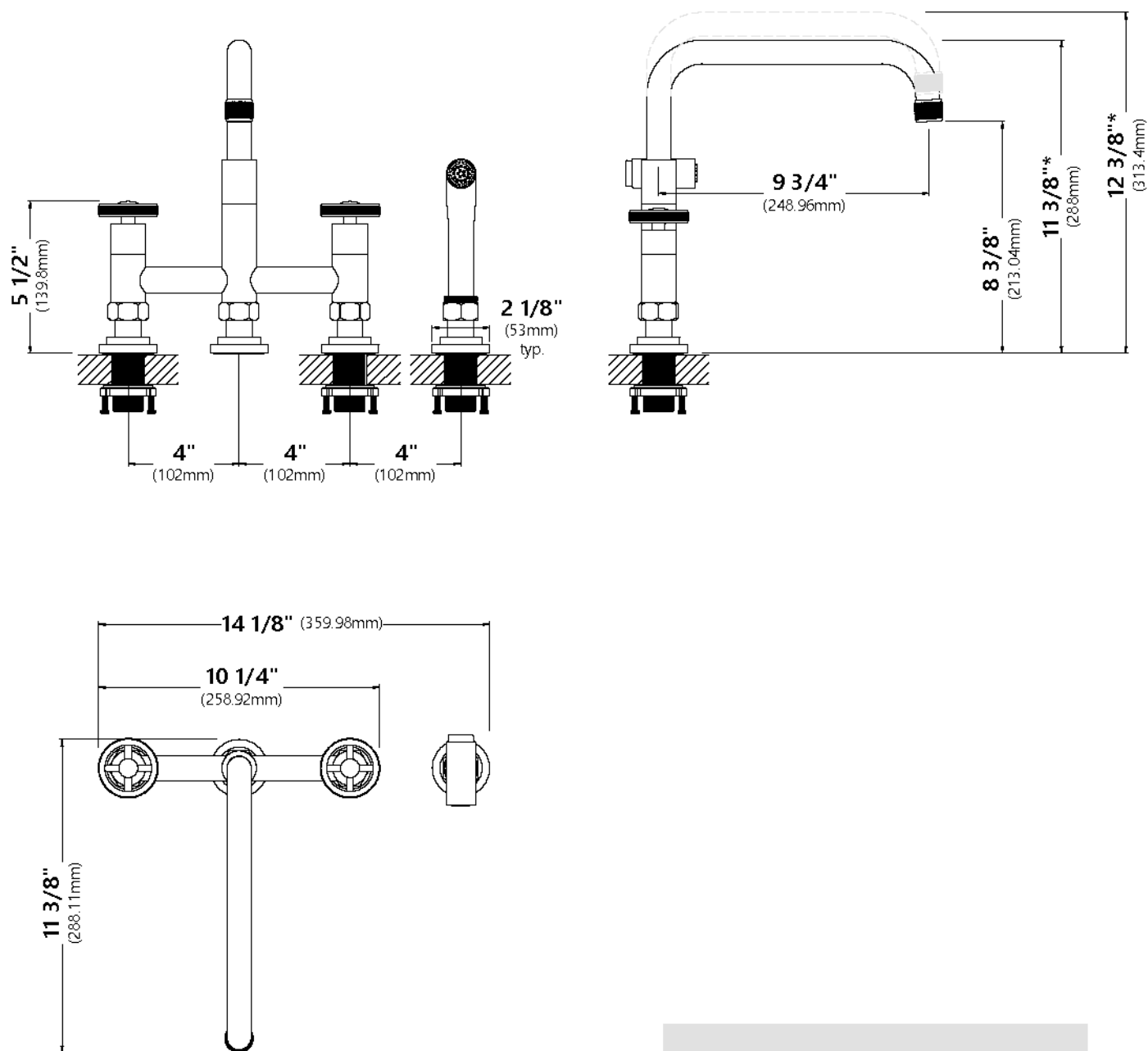
Safety Goggles

Diagram and Parts List



- | | |
|--|--------------------|
| 1. Faucet Body | 8. 2.2 gpm Aerator |
| 2. Side Sprayer | |
| 3. Sprayer Hose | |
| 4. Quick Connector | |
| 5. Plug (for NO side sprayer installation) | |
| 6. Rubber & Metal Washer | |
| 7. Mounting Nut & Screws | |

Faucet Installation Procedure



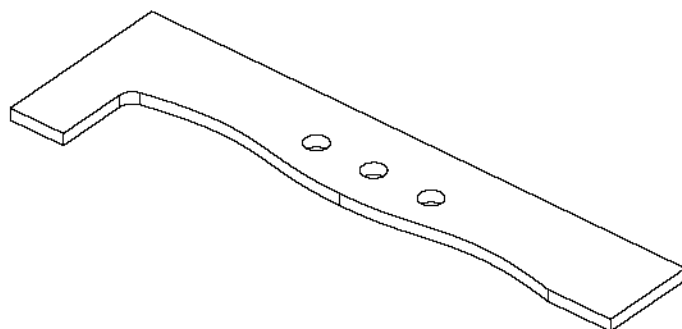
* - Adjustable height range.

Installer Tip:

Shut off main water supply before installing new faucet.

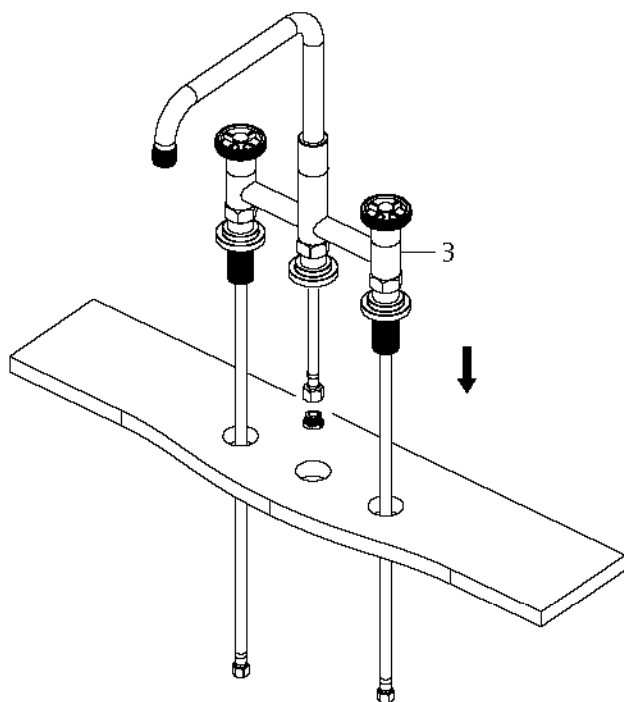
NO Side Sprayer Option

Step 1. Drill countertop



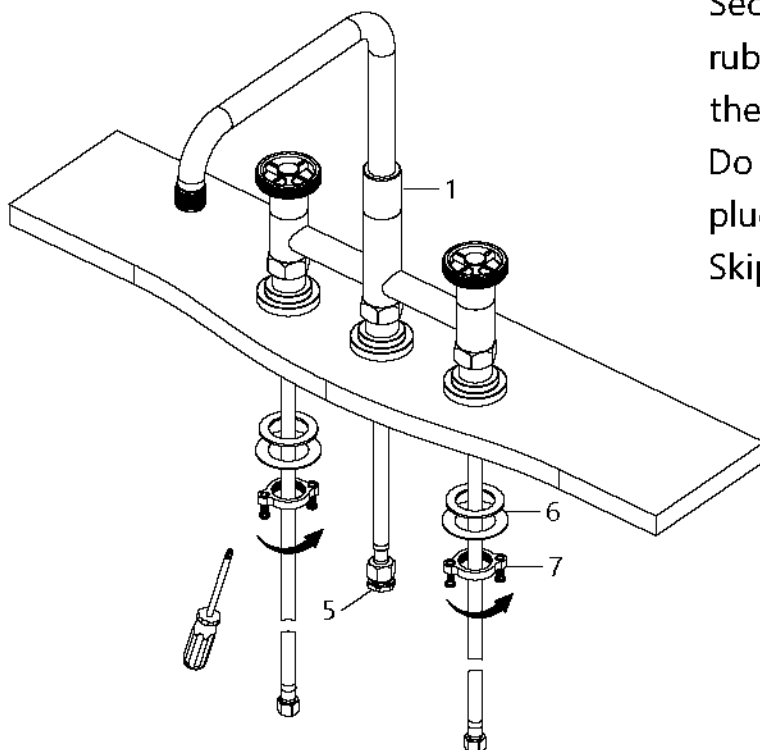
Drill 3 holes into the countertop for the faucet body (1).

Step 2. Install faucet assembly



Install the faucet assembly through the holes in the countertop.

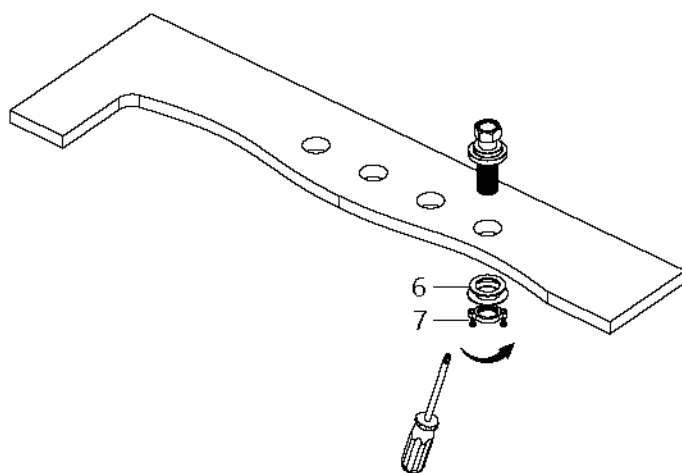
Step 3. Secure faucet assembly



Secure the faucet body (1) with the rubber and metal washers (6) and the mounting nuts and screws (7). Do not overtighten. Make sure the plug (5) is installed tightly. Skip to Step 7.

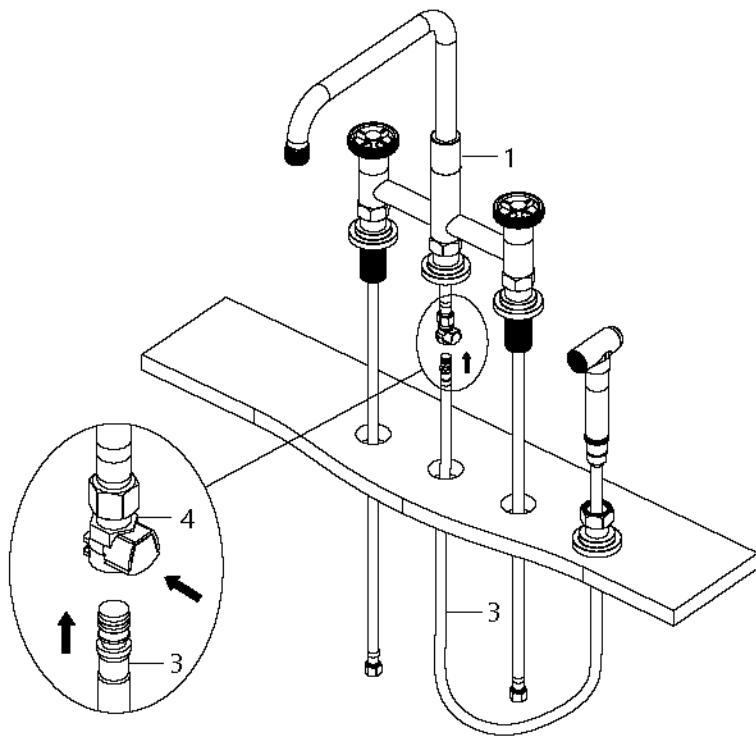
Side Sprayer Option

Step 4. Drill countertop and install side sprayer support



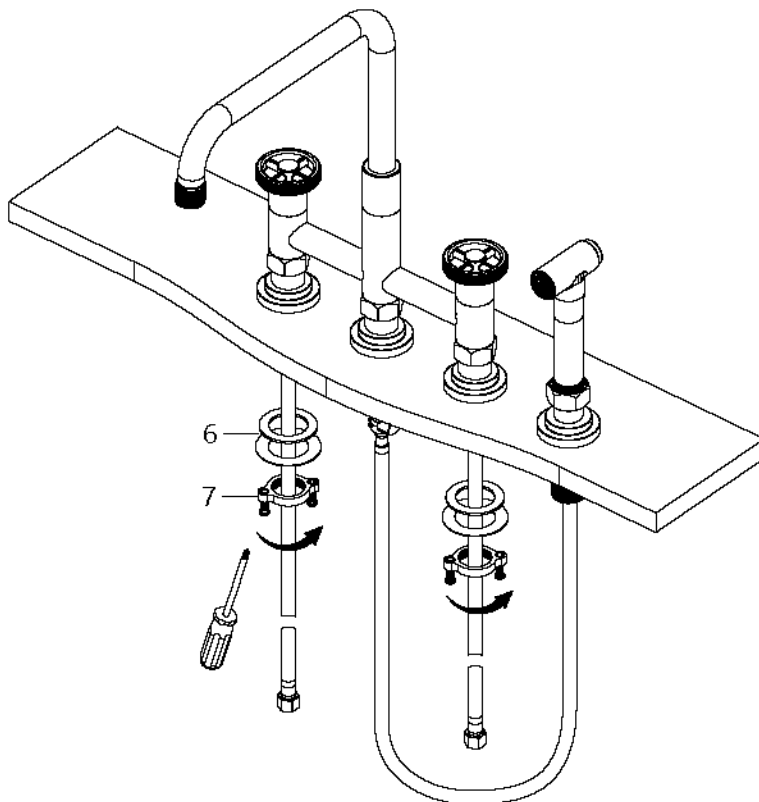
Drill 4 holes into the countertop for the faucet body (1) and side sprayer (2). Install the side sprayer support.

Step 5. Install faucet assembly



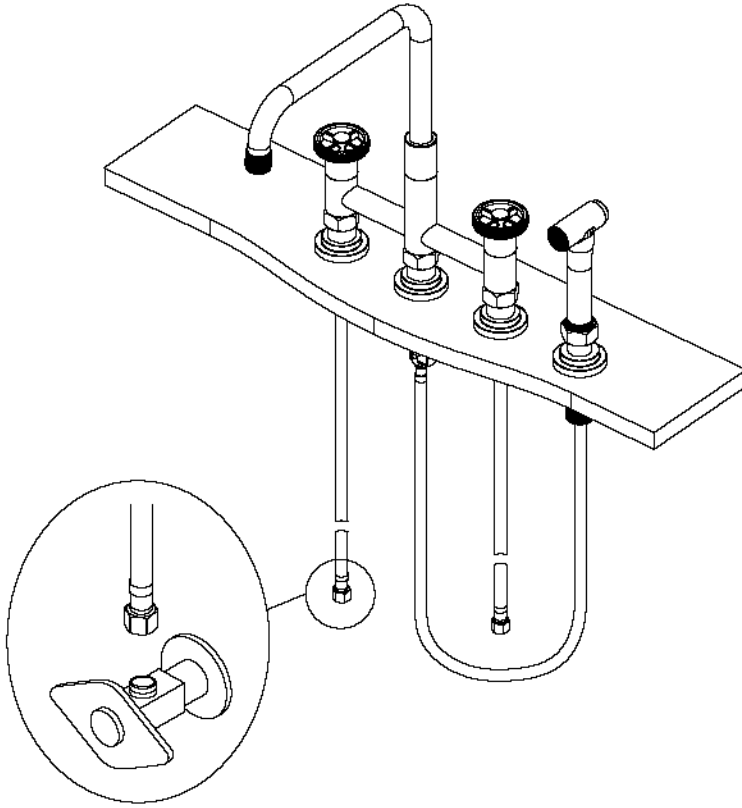
Install the faucet assembly through the holes in the countertop. Remove plug (5) and install quick connector (4). Connect the sprayer hose (3).

Step 6. Secure faucet assembly



Secure the faucet body (1) with the rubber and metal washers (6) and the mounting nuts and screws (7). Do not overtighten.

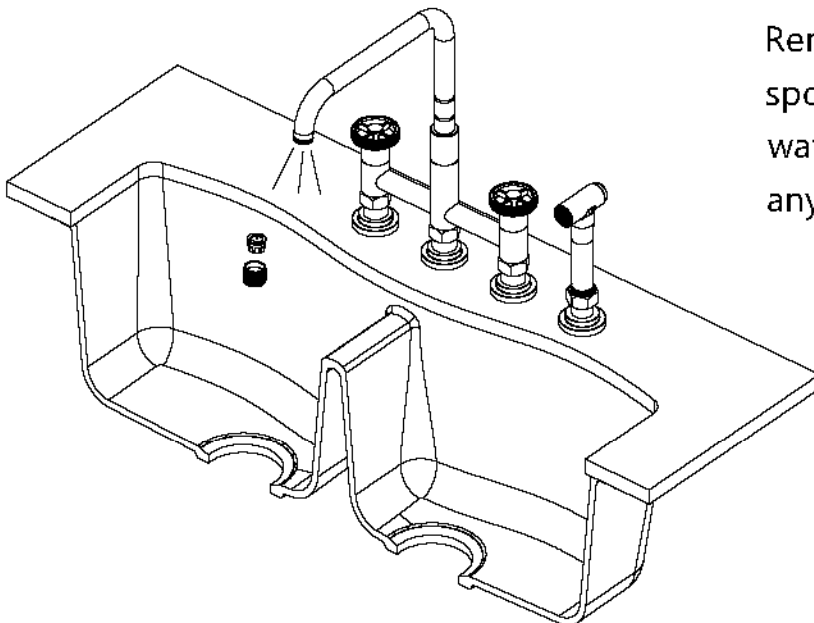
Step 7. Connect waterlines



Connect waterlines to angle stops. Tighten with a wrench until snug. Turn on hot and cold angle stops and check for leaks.

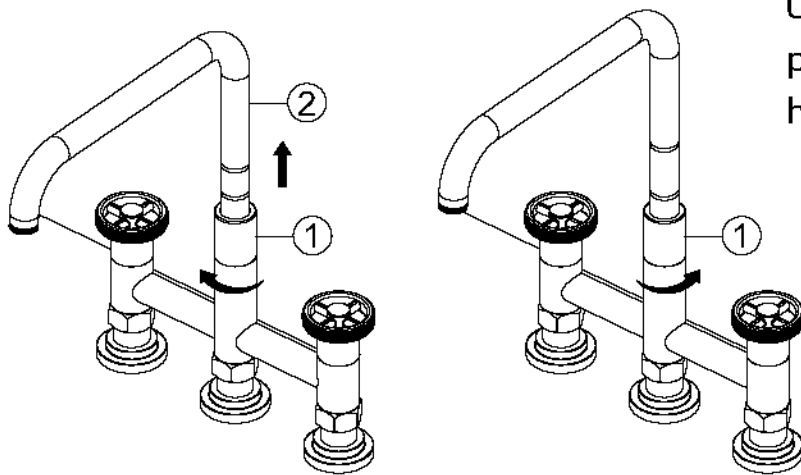
NOTE: Make sure filter washers are installed.

Step 8. Flush waterway



Remove the aerator from the spout. Turn faucet on and let the water run for 60 seconds to flush any debris.

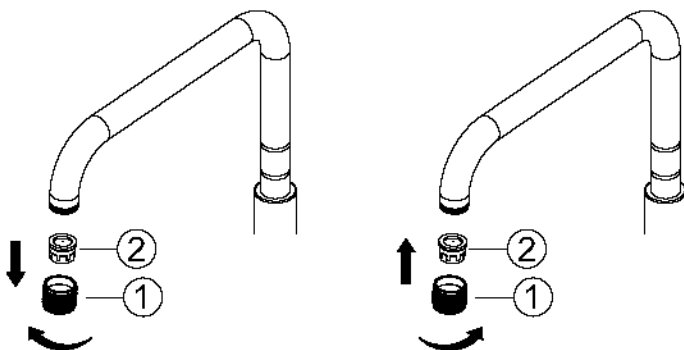
Step 9. Adjusting spout height



Unthread the holding nut (1) and pull the spout (2) up. Thread the holding nut (1).

NOTE: The adjustment can be up to 1". Lock to the desired location. It is recommended to set and forget, so the grease does not get worn. It is recommended to wipe the spout after setting the height.

Step 10. Aerator replacement



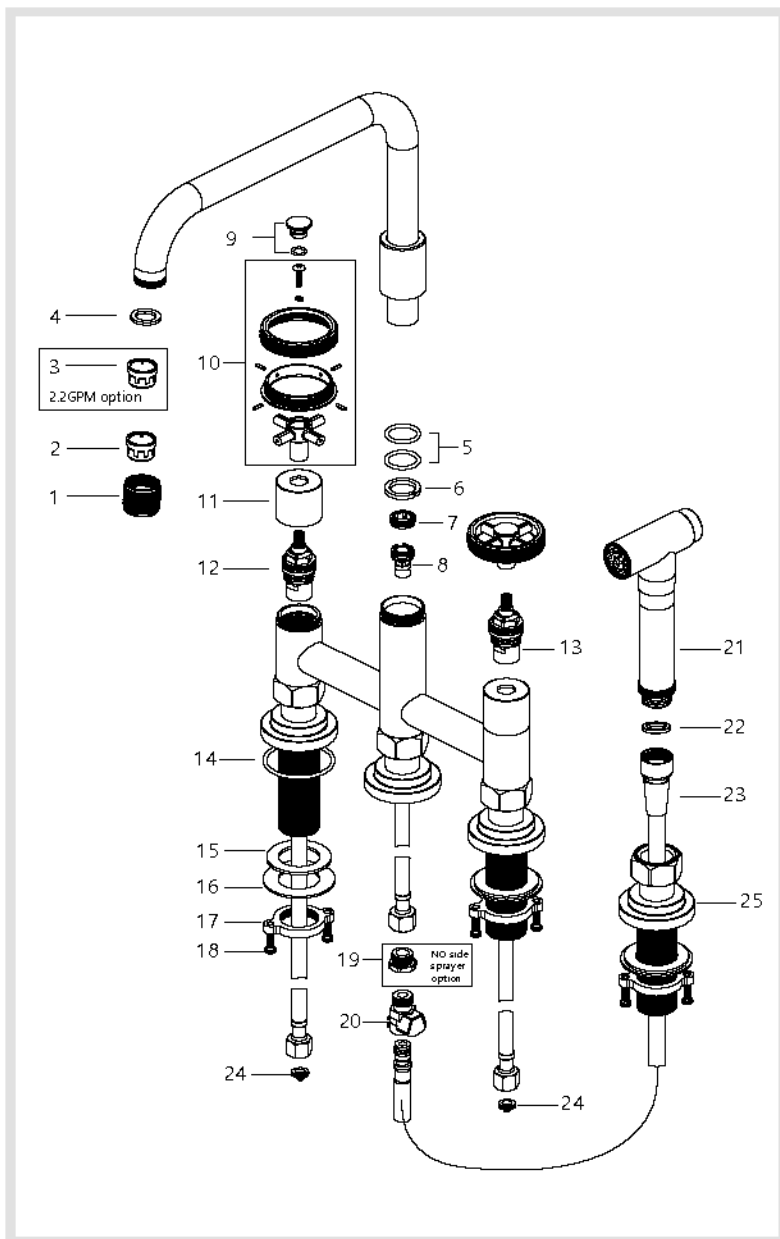
This faucet ships with a 1.8 GPM red aerator installed. An optional 2.2 GPM yellow aerator is also included in the box.

To switch the flow rate of the faucet:

1. Disassemble the aerator assembly by separating the aerator housing (1) and the aerator (2).
2. Replace 1.8 GPM red aerator (2) with the 2.2 GPM yellow aerator (2).
3. Reinstall the aerator assembly.

NOTE: In compliance with CEC standards, this faucet is designed with a 1.8 gpm flow rate. At your discretion, you may modify the product with the included 2.2 gpm restrictor. Please note that doing so will remove the capability of this product to meet specific low-flow standards. Kraus is not liable for any alterations made to the product post-sale, and highly advises that you consult with your local or statewide plumbing enforcement agency prior to any modification.

Replacement Parts



Replacement Parts List	Finish/Color	Part #
1. Aerator Housing	SFS, MB, BG*	KP44031
2. Aerator 1.8 GPM	RD*	KP44029
3. Aerator 2.2 GPM	YW*	KP44030
4. Aerator Washer		KP44028
5. Spout O-Ring		KP44036
6. Spout Sleeve		KP44037
7. Diverter Cap		KP44038
8. Diverter		KP44039
9. Handle Button	SFS,MB,BG,RD*	KP44032
10. Metal Handle	SFS,MB,BG,RD*	KP44033
11. Cartridge Cover	SFS, MB, BG*	KP44034
12. Cartridge Hot		KP44004-H
13. Cartridge Cold		KP44004-C
14. Base O-Ring		KP44035
15. Rubber Washer		KP44006
16. Metal Washer		KP44007
17. Mounting Nut		KP44008
18. Mounting Screws		KP44009
19. Supply Hose Plug		KP44041
20. Quick Connector		KP44020
21. Side Sprayer	SFS, MB, BG*	KP44042
22. Washer		KP44043
23. Side Sprayer Hose	SFS, MB, BG*	KP44044
24. Filter Washers		KP44022
25. Sprayer Base	SFS, MB, BG*	KP44045

*Denotes faucet component color options:

SFS - Spot Free Stainless Steel

MB - Matte Black

BG - Brushed Gold

RD - Red

YW - Yellow

Trouble-Shooting

If you have followed the instructions carefully and your faucet still does not work properly, take the following corrective steps:

PROBLEM	CAUSE	ACTION
Leakage under faucet handle	Locking nut has come loose or cartridge needs to be reseated.	Remove button located at top of handle. Loosen set screw with a phillips screw driver. Remove handle and unscrew cartridge cover by hand. Tighten locking nut with an adjustable wrench.
Water does not shut off completely	Cartridge may need to be adjusted or replaced.	Remove button located at top of handle. Loosen set screw with a phillips screw driver. Remove handle and unscrew cartridge cover by hand. Unscrew locking nut with an adjustable wrench. Remove ceramic disc cartridge. Check for cracks, and if O-ring is seated correctly. Reseat cartridge.
Leaking between spray head and the hose	Spray head may be loose or washer is not seated correctly in the hose connection.	Tighten spray head by hand until snug. Make sure washer is seated correctly.
Low flow	Aerator may be clogged	Unscrew aerator with aerator key. Hold tip of spray head and turn on water to flush debris.
	The screen filter in the hose connectors is dirty.	Turn off the water supply at water valve and unscrew the hose connectors from water supply lines. Clean the screen in the water lines with hot water, removing any debris or calcium build up.
	The diverter may be clogged.	Unscrew the spout nut, remove the spout. Unscrew the diverter cap 7 with 12mm hex key. Remove the diverter 8 with needle pliers, clean it with hot water removing any debris or calcium build up. Reassemble spout.
Water doesn't divert properly from faucet spout to faucet sprayer	The diverter may be clogged.	Unscrew the spout nut, remove the spout. Unscrew the diverter cap 7 with 12mm hex key. Remove the diverter 8 with needle pliers, clean it with hot water removing any debris or calcium build up. Reassemble spout.

Care & Maintenance

* To keep the product clean & shining, follow the steps below:

1. Rinse with clean water & dry with a soft cloth
2. Do not clean with soaps, acid, polish, abrasives or harsh cleaners
3. Do not use cloth with a coarse surface
4. Unscrew the aerator and clean when necessary



* This installation manual is subject to change without further notice.

Urbix™ Industrial Stand Alone Filtration Faucet

FF-101

Prior to Installation:

- Make sure you have all necessary parts by checking the diagram and parts list. If any part is missing or damaged, please contact Kraus Customer Service at 800-775-0703 for a replacement.
- Turn off the hot and cold water supply at the angle stops and turn on the old faucet to release any built up pressure. Remove existing faucet. Clean sink or countertop to remove any debris, plumber's putty, or silicone.
- Flush angle stops to release any debris prior to installation.
- Pre-drilled hole size requirement: 1 1/4" (min)
- Max countertop thickness: 3 1/16

Tools Required

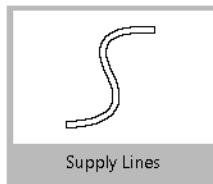
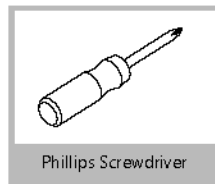
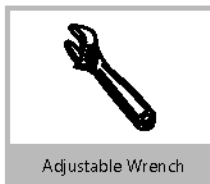
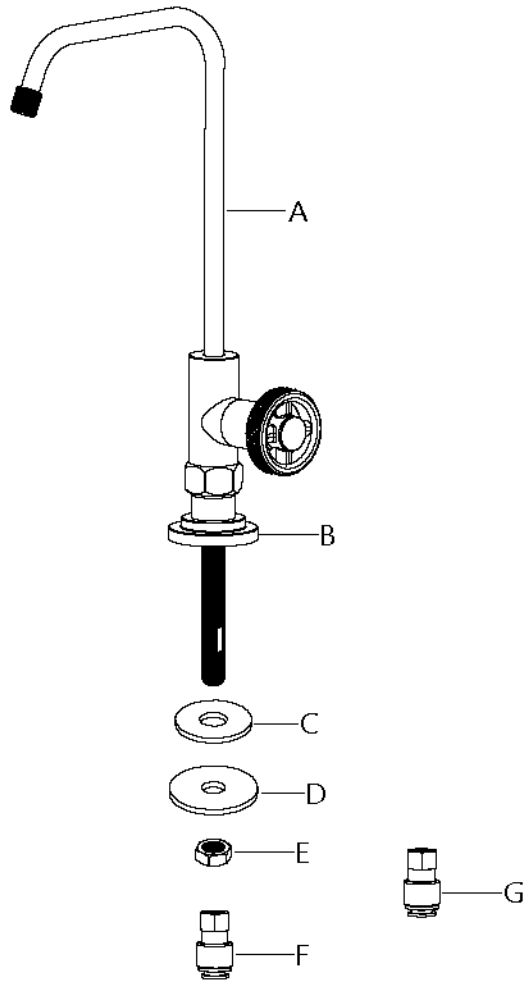
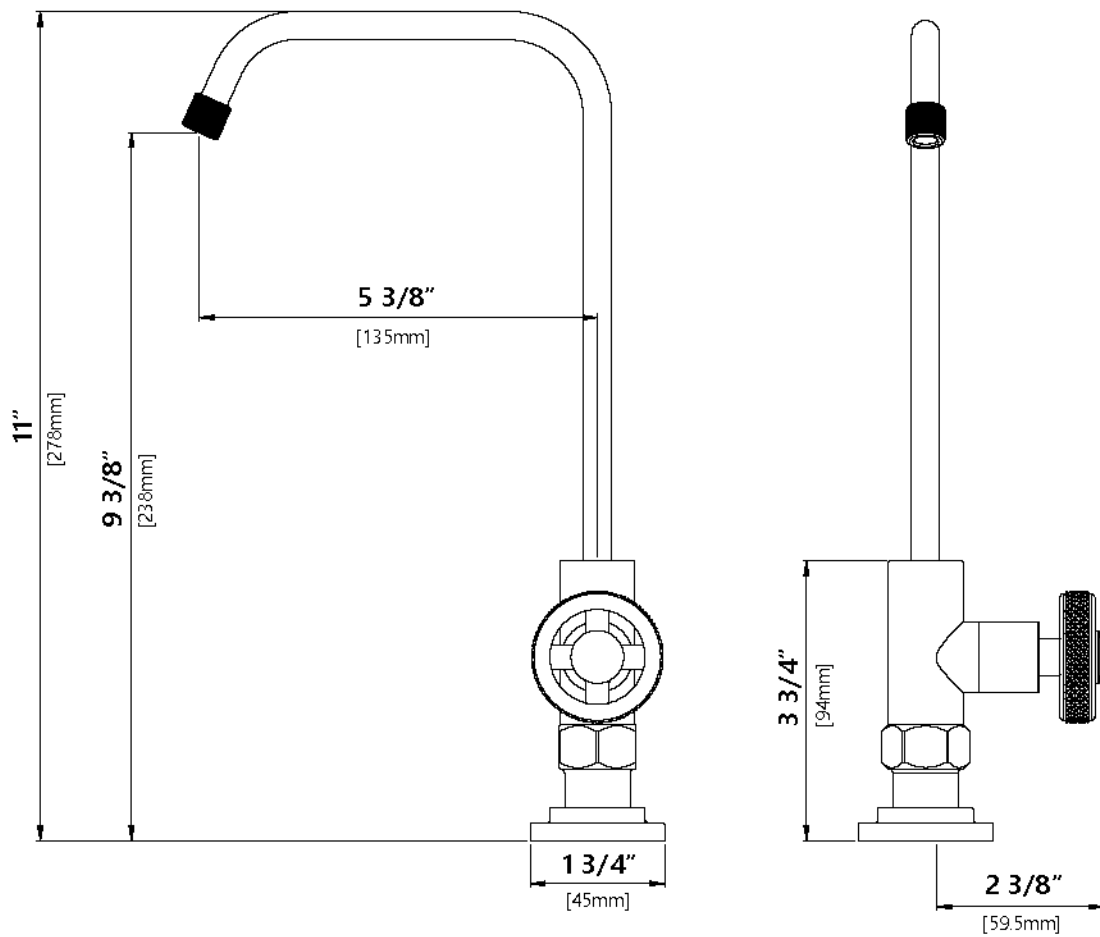


Diagram and Parts List



- A. Faucet Assembly
- B. Flange
- C. Rubber Washer
- D. Metal Washer
- E. Mounting Nut
- F. Connector 3/8"
- G. Connector 1/4"

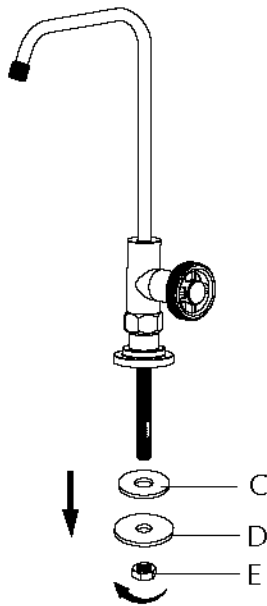
Faucet Dimensions



Installer Tip:

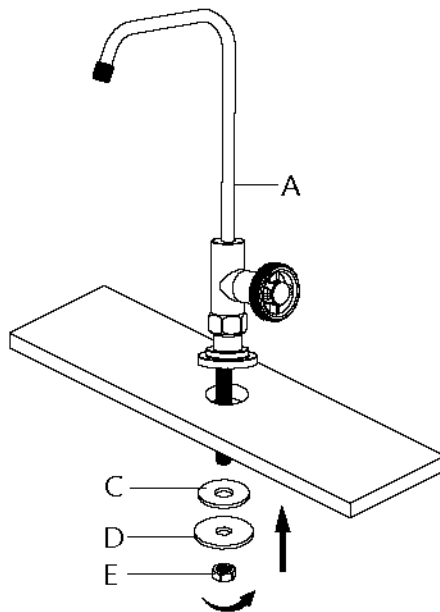
Shut off main water supply before installing new faucet.

Step 1: Preparing for installation



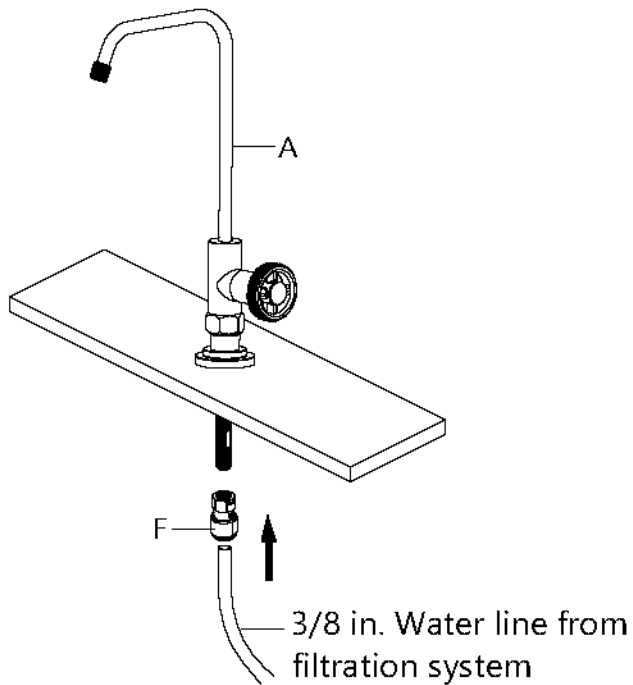
Remove the rubber washer (C), metal washer (D), and mounting nut (E) from the end of the stud.

Step 2: Installing the faucet assembly



Place the faucet assembly (A) through the selected hole in the sink or countertop. On the underside of the sink or countertop, slide the rubber washer (C) and metal washer (D) onto the stud. Thread the mounting nut (E) onto the stud, and tighten securely using your wrench.

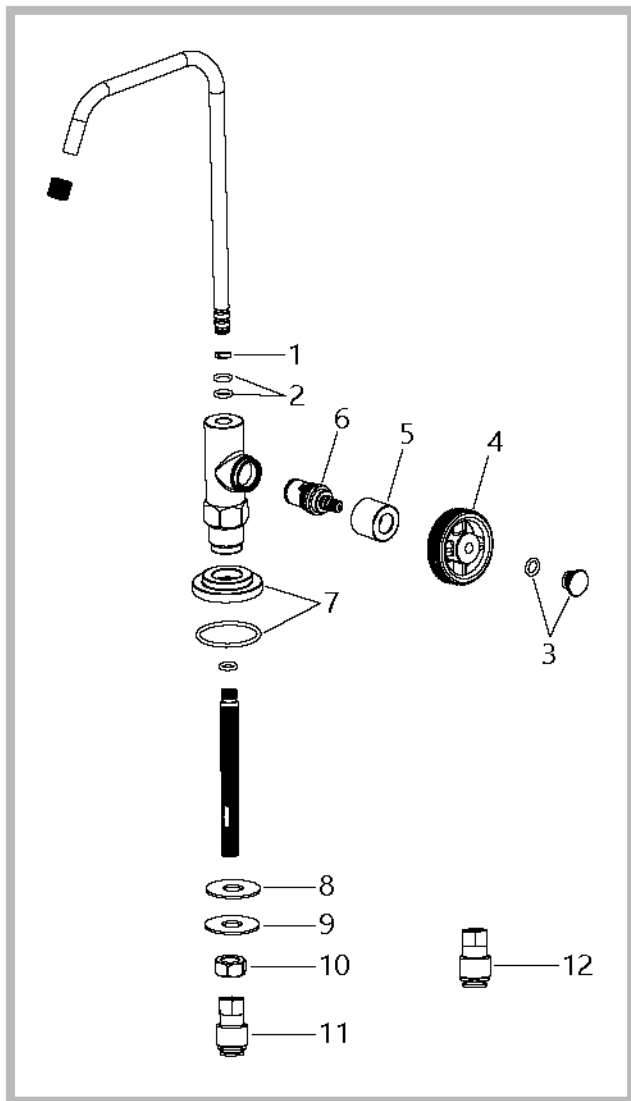
Step 3. Connecting the quick connect adaptor and water line



Thread the quick connect adaptor (F) onto the end of the faucet assembly (A) stud, and tighten securely using a wrench. Connect the 3/8 in. water line from the filtration system by pushing the line into the connector (F). Pull down on the 3/8 in. line slightly to ensure the quick connect fitting has engaged.

Note: A 1/4" connector (G) is included for 1/4" water lines.

Replacement Parts



Replacement Parts List	Finish/Color	Part #
1. Locking Ring		KP44046
2. O-Ring		KP44047
3. Cover Button	SFS, MB, BG*	KP44056
4. Handle	SFS, MB, BG*	KP44049
5. Cartridge Cover	SFS, MB, BG*	KP44051
6. Cartridge		KP44048
7. Flange	SFS, MB, BG*	KP44050
8. Rubber Washer		KP44052
9. Metal Washer		KP44053
10. Mounting Nut		KP44054
11. Connector 1/4"		KP44057
12. Connector 3/8"		KP44055

*Denotes faucet component color options:

SFS - Spot Free Stainless Steel

MB - Matte Black

BG - Brushed Gold

Trouble-Shooting

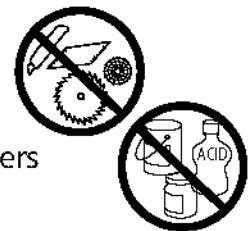
If you have followed the instructions carefully and your faucet still does not work properly, take the following corrective steps:

PROBLEM	CAUSE	ACTION
Leakage under faucet handle	Cartridge has come loose	Remove index and loosen set screw with hex wrench. Remove the handle. Tighten cartridge with an adjustable wrench.
Water does not shut off completely	Cartridge may need to be adjusted or replaced.	Remove index and loosen set screw with hex wrench. Remove the handle. Tighten cartridge with an adjustable wrench. Remove the cartridge. Check for cracks.

Care & Maintenance

* To keep the product clean & shining, follow the steps below:

1. Rinse with clean water & dry with a soft cloth
2. Do not clean with soaps, acid, polish, abrasives or harsh cleaners
3. Do not use cloth with a coarse surface
4. Unscrew the aerator and clean when necessary



* This installation manual is subject to change without further notice.