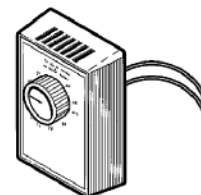




MODEL DH100W LINE/LOW VOLTAGE DEHUMIDISTAT



WARNING

TO REDUCE THE RISK OF FIRE, ELECTRIC SHOCK, OR INJURY TO PERSONS, OBSERVE THE FOLLOWING:

1. Before servicing or cleaning unit, switch power off at service panel and lock service panel to prevent power from being switched on accidentally.
2. Installation work and electrical wiring must be done by qualified person(s) in accordance with all applicable codes and standards, including fire-rated construction codes and standards.
3. When cutting or drilling into wall or ceiling, do not damage electrical wiring and other hidden utilities.

INSTALLATION

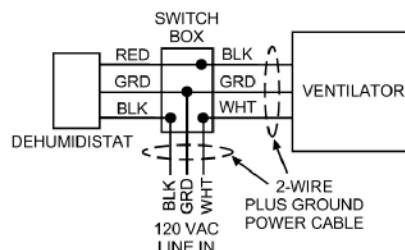
Unit can be used as a 120 volt (line voltage) control or for low-voltage control applications.

1. Disconnect electrical power.
2. Locate control on inside wall near an existing wall thermostat for easy installation and wiring where normal air circulation can surround the control. Position control about 4 or 5 feet above the floor away from direct light or heat from lamps, sun, fireplaces, radiators, warm air registers, etc. Avoid locations close to outside doors or windows.
3. **24V installation** - Remove cover from back plate. Remove red and black wires from dehumidistat and replace them with the two low voltage terminals provided. Run low voltage wires through back plate and connect to these terminals. Mount back plate to wall with screws provided. Snap cover over back plate.
120V installation - Install appropriate electrical box in wall. Remove cover from back plate but do not pull back plate off of dehumidistat wires. Make electrical connections following one of the wiring diagrams. Mount back plate to electrical box with screws provided. Snap cover over back plate.

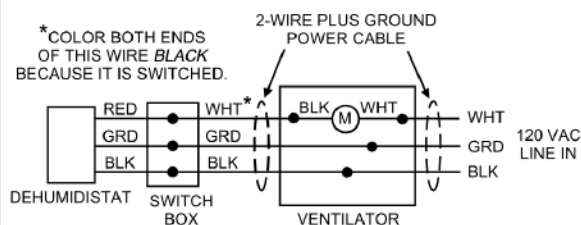
OPERATIONAL TEST

Turn dehumidistat down to its lowest setting and then to the highest setting. Cycle at least 3 times to assure proper function. Return control knob pointer to desired setting.

120 VAC WIRING DIAGRAMS



POWER SUPPLIED TO SWITCH BOX



POWER SUPPLIED TO VENTILATOR

BROAN-NUTONE ONE YEAR LIMITED WARRANTY

Broan-NuTone warrants to the original consumer purchaser of its products that such products will be free from defects in materials or workmanship for a period of one year from the date of original purchase. THERE ARE NO OTHER WARRANTIES, EXPRESS OR IMPLIED, INCLUDING, BUT NOT LIMITED TO, IMPLIED WARRANTIES OF MERCHANTABILITY OR FITNESS FOR A PARTICULAR PURPOSE.

During this one-year period, Broan-NuTone will, at its option, repair or replace, without charge, any product or part which is found to be defective under normal use and service.

THIS WARRANTY DOES NOT EXTEND TO FLUORESCENT LAMP STARTERS AND TUBES. This warranty does not cover (a) normal maintenance and service or (b) any products or parts which have been subject to misuse, negligence, accident, improper maintenance or repair (other than by Broan-NuTone), faulty installation or installation contrary to recommended installation instructions.

The duration of any implied warranty is limited to the one-year period as specified for the express warranty. Some states do not allow limitation on how long an implied warranty lasts, so the above limitation may not apply to you.

BROAN-NUTONE'S OBLIGATION TO REPAIR OR REPLACE, AT BROAN-NUTONE'S OPTION, SHALL BE THE PURCHASER'S SOLE AND EXCLUSIVE REMEDY UNDER THIS WARRANTY. BROAN-NUTONE SHALL NOT BE LIABLE FOR INCIDENTAL, CONSEQUENTIAL OR SPECIAL DAMAGES ARISING OUT OF OR IN CONNECTION WITH PRODUCT USE OR PERFORMANCE. Some states do not allow the exclusion or limitation of incidental or consequential damages, so the above limitation or exclusion may not apply to you.

This warranty gives you specific legal rights, and you may also have other rights, which vary from state to state. This warranty supersedes all prior warranties.

To qualify for warranty service, you must (a) notify Broan-NuTone, (b) give the model number and part identification and (c) describe the nature of any defect in the product or part. At the time of requesting warranty service, you must present evidence of the original purchase date.