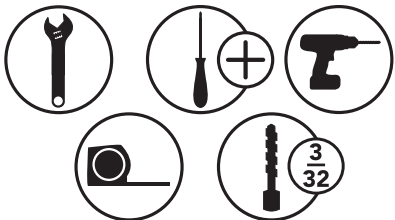




# Soft-Close Pullout with *blum* Tandem slides with BluMotion

For 11" Wide Pullout

TOOLS REQUIRED:



CARE AND MAINTENANCE:

CLEAN WITH A DAMP CLOTH  
AND WIPE PARTS DRY

ESTIMATED ASSEMBLY  
TIME:

30 MIN

**PART LIST**  
A- SLIDES  
B- SLIDE STRAPS  
C- RELEASE LEVERS  
D- PULLOUT CHASSIS  
E- REAR SLIDE CATCH  
F- PLASTIC SPACER  
G- (4) #6 X 1/2" EURO SCREWS  
H- (4) #3 X 1/2" COUNTERSUNK HEAD SCREWS  
I- SCREW PACK 308

Recommended  
Screw and Pilot  
Hole Location (8)  
Places

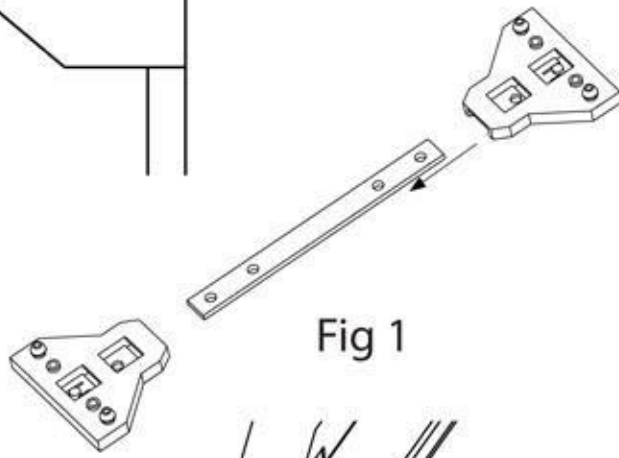


Fig 1b

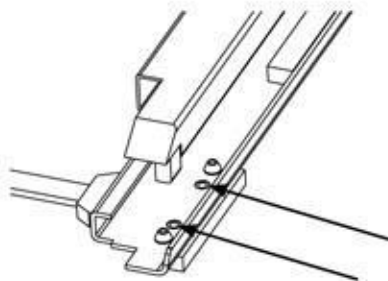


Fig 2

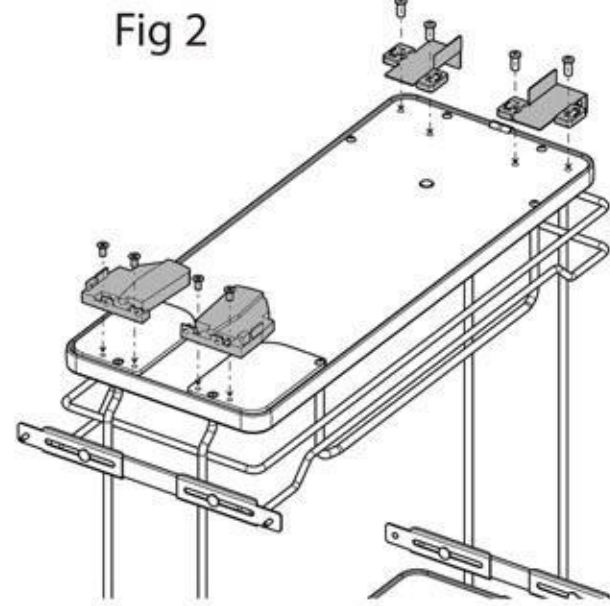


Fig 3

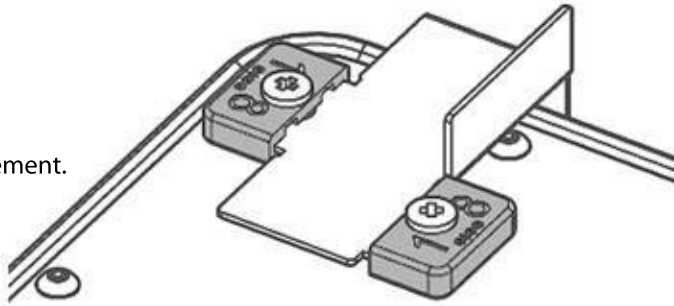


Fig 3a

Lock Nut

Fig 4

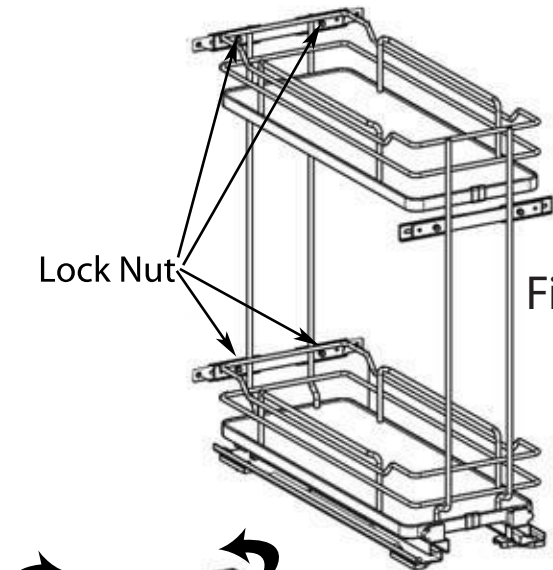


Fig 5

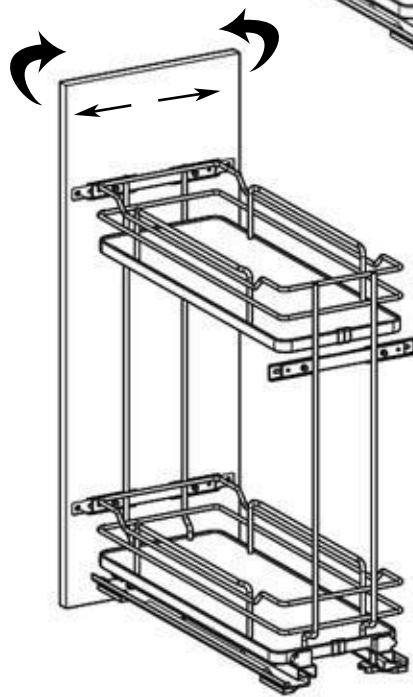


Fig 6A

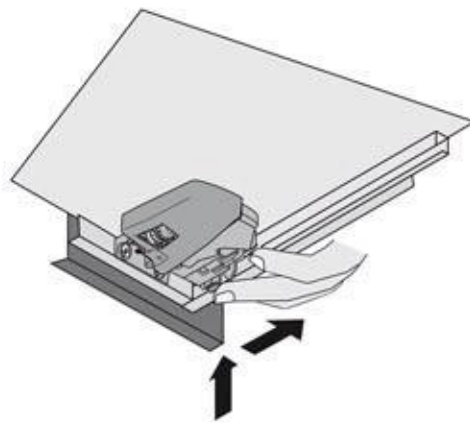
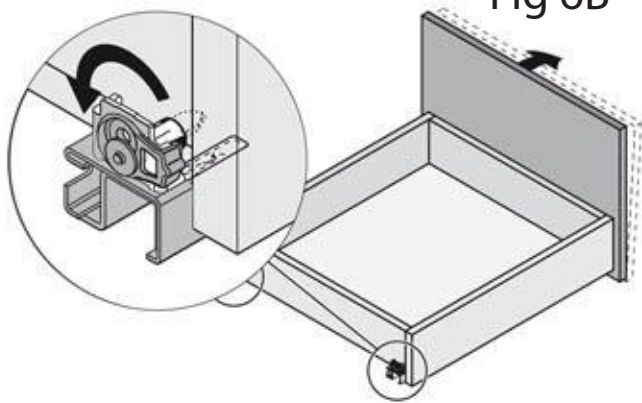


Fig 6B



- 1) Assemble the mounting straps (Fig 1) and attach them to the Blum Tandem slides by snapping the plastic feet into the appropriate holes. (See Fig 1b)
- 2) Using the mounting template locations, pre drill 8 holes using a 5/32" drill bit.
- 3) Assemble the slide assembly to the floor of cabinet using the (8) #6 x 1" Phillips Flat Head Screw (Screw Pack 308 - F1606-22-1). Note that the screws use the inner set of holes on the plastic feet. (See Fig 2)
- 4) Assemble the release levers and the rear slide catch (See Fig 3). (Note: Be sure that the rear slide catch is assembly in the right position, when it is installed you have to see the plastic part with number 18(See Fig 3a))
- 5) With the slides in the fully closed position the pullout chassis can now be slid into place fully inserted into the cabinet. When the unit is pushed to the fully closed location the front release levers will engage the slides and the unit can be fully cycled. Note: Approximately 2" from the fully closed position, there will be a slight bump. It is best to tilt the unit forward just a bit to aid in engagement.
- 6) Loosen the (2) lock nuts at the back of the unit to allow the rear stop to float freely (See Fig 4). Move the rear stop until it catches the rear of the face frame (if frameless application, a block may need to be added to allow the stop work properly). Once the stop is at the right position, the lock nuts can be tightened and bumpers can be added to the front of the stops.

Attaching the cabinet door

- 1) Loosen the (4) lock nuts inside the front wall of the unit. (See Fig 4)
- 2) Pull the Adjustable Door Mounting Brackets to ensure that you are mounting to the "thick" portion of the cabinet door. (Front of pull out should line up with front of face frame).
- 3) Use the (4) #6 x 1/2" flat head screws provided to attach the door to the pullout unit.
- 4) If the door needs to be adjusted sideways, loosen the (4) lock nuts and adjust the door. (See Fig 6)
- 5) See Fig. 7A and 7B for tilt and hight adjustment

Install rub bushings using enclosed kit and instructions (Note: Chassis may need to be removed for proper installation)

Front edge of paper  
to front of cabinet  
(or front of face frame)  
Note: if inset application,  
move the template back  
the thickness of the door

Fold Template  
along this edge to  
fit cabinet opening

Fold Template  
along this edge to  
fit cabinet opening