

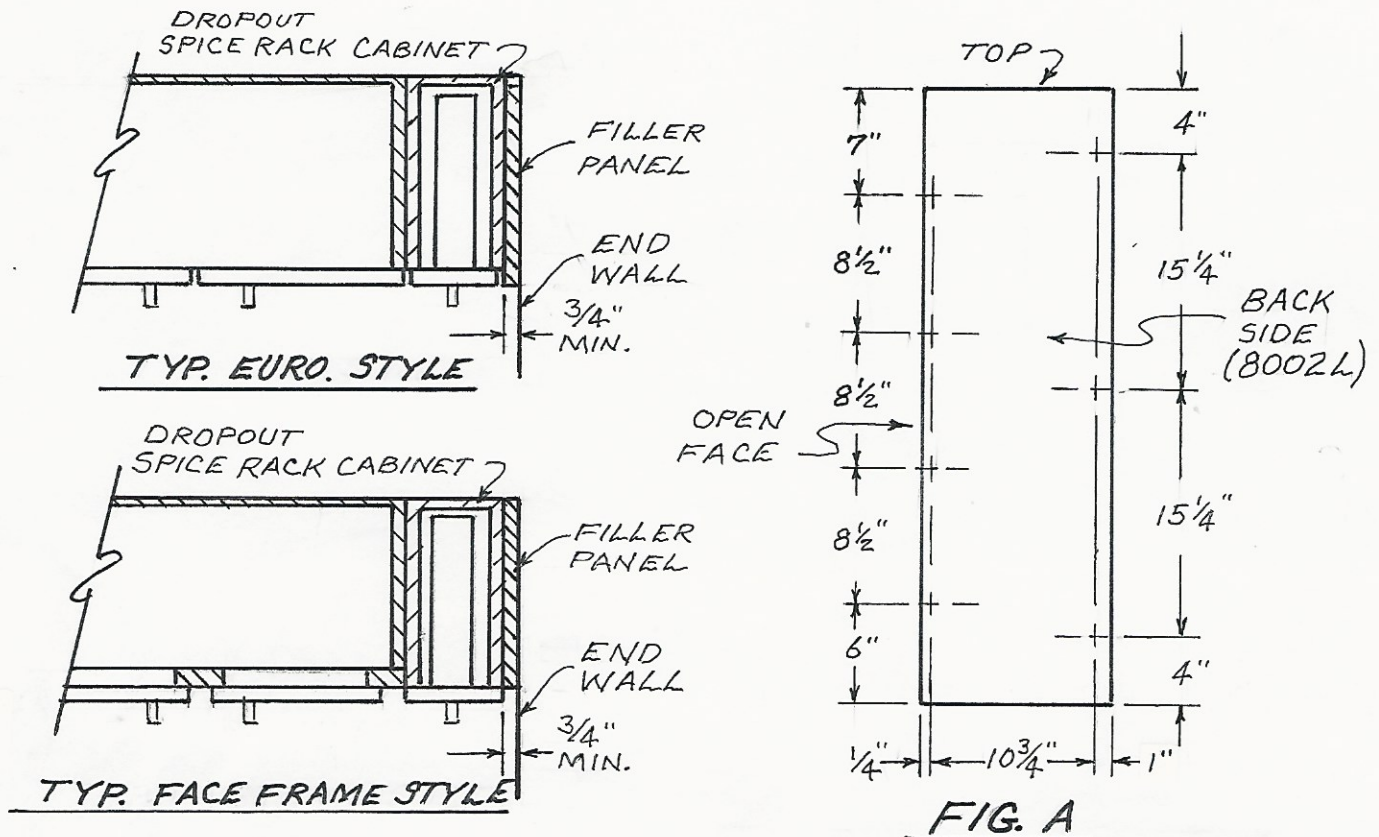
INSTALLING ITEM 8002 ON A WALL WITHOUT BACKSIDE ACCESS

When placing the EZ Install Spice Rack Storage System on a surface that does not have access on the backside.

First fasten a filler panel securely to the wall or structure in the location chosen for placement of the spice rack cabinet (see examples below). This filler panel **must** be of adequate strength to support the spice rack cabinet and must be installed level, plumb and square (shim as needed) with the cabinets that will be adjacent to it.

Pre-drill the backside of the spice rack cabinet as shown in Fig A. Locate the spice rack cabinet with backside against the previously installed filler panel and fasten the front edge with appropriate screws being sure that the screw heads do not stick up above the inside surface of the spice rack cabinet to maintain the proper clearance for the Dropout Spice Rack guides.

Carefully fully open the spice rack, move thumb screw from lower location in upper guide bar on backside and insert into upper location on upper guide bar to lock the spice rack in the completely opened position. Install appropriate screws in inside screw holes. This will require use of a right angle adapter (such as DeWalt DWARA50). Once securely fastened to filler panel, proceed with normal installation.



WALL END PLACEMENT EXAMPLES
 (8002L SHOWN REVERSE FOR 8002R)

RECOMMENDED PRE-DRILL
 SCREW HOLE LOCATIONS